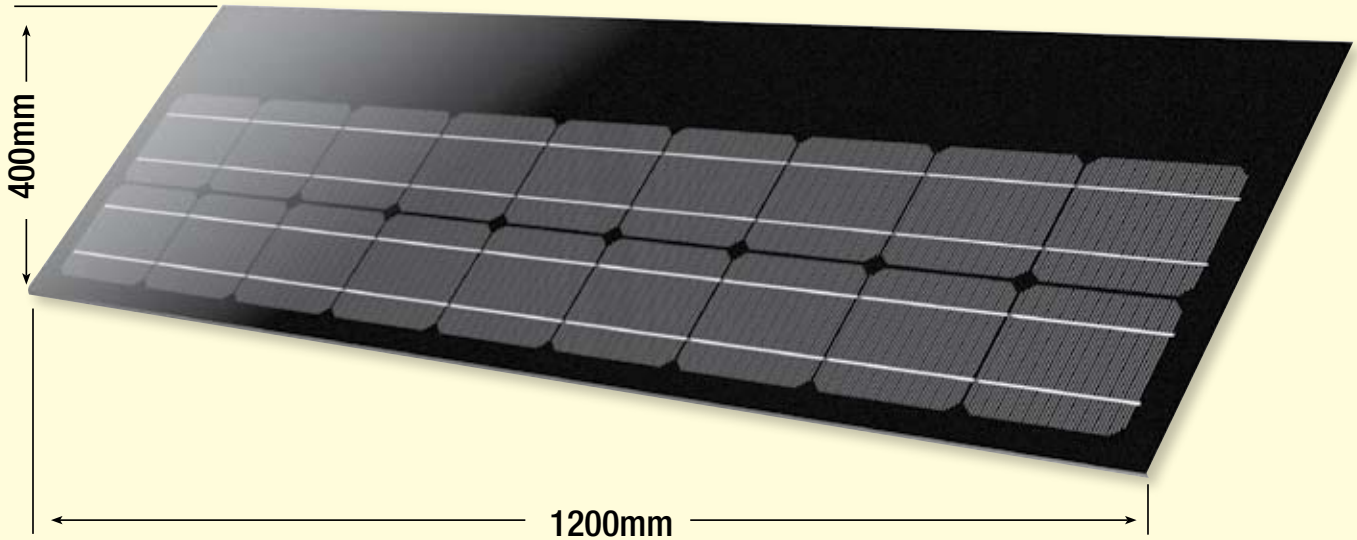




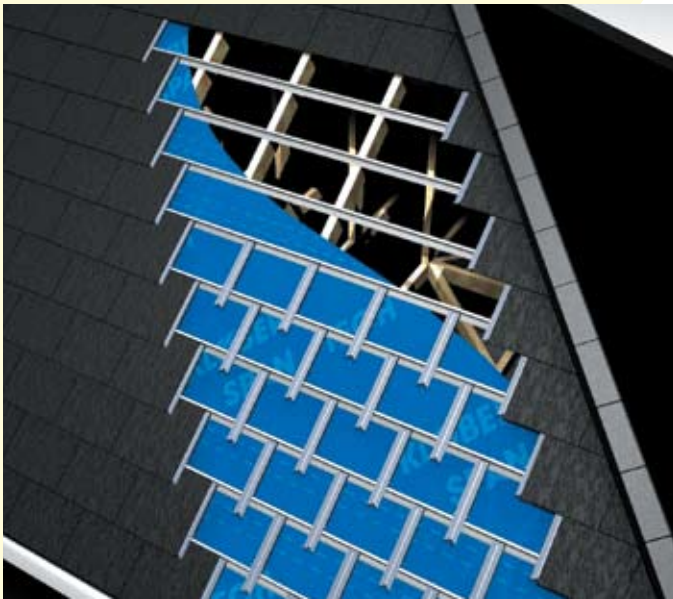
**nu-lok<sup>TM</sup>**

The world's smartest  
roofing system

# ...introduces the nu-lok seamless solar insert



nu-lok system



Model – SLS-445 – mono crystalline 45Watt, Peak power voltage 8.84Volts DC

Laminate model 3.6Kg (if this was framed it would weigh 6Kg)

Size – 1200mm x 400mm including 100mm overlap

Cell Efficiency 15%

Warranty 2 years product and materials 25 years limited warranty of 80% power output

Connections via 1m MC3 leads (2)

# nu-lok seamless solar inserts fit any roof type from colourbond steel to terracotta

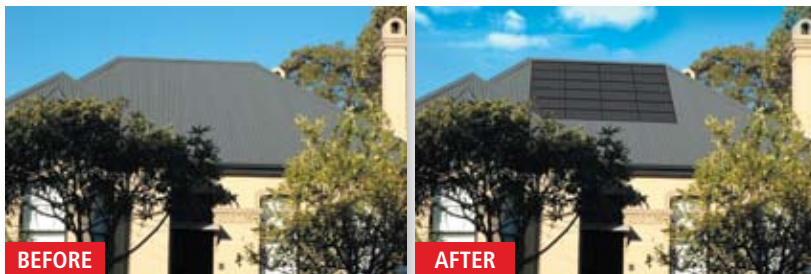
## seamless solar inserts for a clean roofline

nu-lok solar inserts are designed to integrate into the roof rather than fix on top of it. This means that the roofline remains clean and clear of any unsightly structures that can be the case with many other roof solar panels. The unique nu-lok fixing system, developed to install ceramic and slate tiles, is the key that allows the inserts to be fitted without using nails or screws, either of which would shatter the solar panels. This unique innovation means that now every Australian roof could potentially become an energy source for the nation without sacrificing the beauty of the home that supports it.

## transform your roof into a power source



**3kw** solar roof approx.



**1kw** solar roof approx.

## ceramic tiles



**3kw** solar roof approx.

## colourbond steel



**1kw** solar roof approx.

## terracotta



**2kw** solar roof approx.

## slate

In Europe slate roofs have been used for centuries. The Saxon Chapel at Stratford-on-Avon, Wiltshire, England has had 1100 years of climatic changes, and is still in good condition, although covered with moss.

Slate, being a natural product, will vary in thickness, colour and strength. Slate has very low porosity (approx. 0.4%). Clay tile has a porosity of 2–10% and concrete 3–20%. Low porosity is a feature that equates with a long lifespan. In very cold climates the freeze / thaw cycle will damage the roofing tiles even more rapidly.

## ceramic

To overcome the limitations of natural slate, nu-lok produces a high temperature vitrified ceramic slate in Italy. The long life characteristic of slate are retained, but being man-made, we have the advantage of controlling the size, thickness, strength and quality. Our Italian shingles have very low porosity – water adsorption of approx. 0.5%. All this means an exceptional long life and strong product (you can walk on it!) and a product that is impervious to moss and algae growth. Not surprisingly, we offer a 50 year warranty.

## description

Each nu-lok shingle is fired at 1200°C to ensure that it is perfectly vitrified.

Produced under the exacting standards of ISO 9001 & ISO 14001, each ceramic shingle is produced to world class measures and is engineered to withstand extreme environmental conditions.

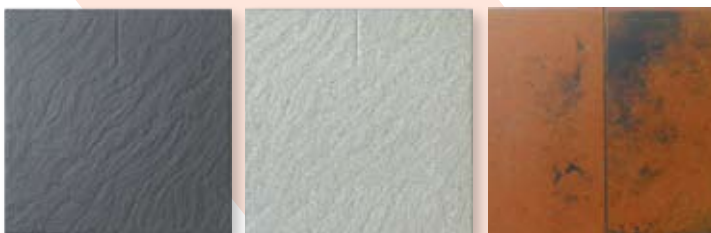
## physical properties

Water Absorption: <0.5%  
Shingle Size: 400 x 400 mm  
Number/m<sup>2</sup>: 8.33  
Thickness: 10 mm

## general details

Roof Weight: 28Kgs/m<sup>2</sup>  
Min. Roof Pitch: 22.5°  
Rafters Spacing: up to 900 mm

## tile selection



Black Ceramic

Grey Ceramic

Burnt Terracotta



NEW HOME

50  
YEAR  
GUARANTEE



EXISTING HOME



EXISTING CHURCH



EXISTING HOME



EXISTING HOME



NEW HOME



EXISTING HOME



for more information visit  
[www.nulok.com.au](http://www.nulok.com.au)

- NSW + ACT 02 9452 3344 • QLD + NT 07 5499 4111
- SA 02 9452 3344 • VIC + TAS 03 9553 2148
- WA 08 9285 0388

