



ROUND TANKS

SIZE	DESCRIPTION	BODY	STYLE	DIMENSIONS (mm)	VIC	SA	NSW	ACT	QLD	FNQ	PRICE \$
675 L	Rainwater Tank	Rnd. Tall	Smooth	760 x 1700 (Dia. x H)	✓						
900 L	Rainwater Tank	Round	Smooth	1070 x 1420 (Dia. x H)	✓						
1000 L	Rainwater Tank	Round	Corrugated	900 x 1850 (Dia. x H)					✓	✓	
1200 L	Rainwater Tank	Round	Corrugated	1200 x 1330 (Dia. x H)					✓	✓	
1500 L	Rainwater Tank	Round	Banded	1086 x 1820 (Dia. x H)	✓	✓	✓	✓	✓	✓	
2250 L	Rainwater Tank	Round	Smooth	1500 x 1720 (Dia. x H)	✓	✓					
2250 L	Rainwater Tank	Squat	Smooth	1750 x 1200 (Dia. x H)	✓	✓					
2500 L	Rainwater Tank	Round	Corrugated	1516 x 1715 (Dia. x H)					✓	✓	
2500 L	Rainwater Tank	Round	Corrugated	1320 x 2060 (Dia. x H)	✓	✓	✓	✓	✓	✓	
3000 L	Rainwater Tank	Round	Corrugated	1410 x 2300 (Dia. x H)					✓	✓	
3000 L	Rainwater Tank	Round	Banded	1400 x 2270 (Dia. x H)	✓	✓	✓	✓	✓	✓	
3200 L	Rainwater Tank	Round	Smooth	1750 x 1790 (Dia. x H)	✓	✓					
4500 L	Rainwater Tank	Round	Corrugated	1820 x 1980 (Dia. x H)	✓	✓					
5000 L	Rainwater Tank	Round	Corrugated	2015 x 1850 (Dia. x H)					✓	✓	
5000 L	Rainwater Tank	Round	Banded	2010 x 1970 (Dia. x H)	✓	✓	✓	✓	✓	✓	
5000 L	Rainwater Tank	Round	Smooth	1860 x 2100 (Dia. x H)	✓	✓					
7000 L	Rainwater Tank	Round	Corrugated	2615 x 1625 (Dia. x H)	✓	✓	✓	✓			
7000 L	Rainwater Tank	Round	Corrugated	2570 x 1770 (Dia. x H)					✓	✓	
9000 L	Rainwater Tank	Round	Corrugated	2540 x 2300 (Dia. x H)	✓	✓					
10000 L	Rainwater Tank	Round	Banded	2560 x 2260 (Dia. x H)	✓	✓	✓	✓	✓	✓	
10000 L	Rainwater Tank	Round	Smooth	2470 x 2480 (Dia. x H)	✓	✓					
11500 L	Rainwater Tank	Round	Corrugated	2570 x 2520 (Dia. x H)					✓	✓	
13500 L	Rainwater Tank	Round	Corrugated	3050 x 2400 (Dia. x H)	✓	✓					
22500 L	Rainwater Tank	Round	Corrugated	3650 x 2500 (Dia. x H)			✓	✓	✓	✓	
22700 L	Rainwater Tank	Round	Corrugated	3650 x 2950 (Dia. x H)	✓	✓					
22700 L	Rainwater Tank	Round	Smooth	3650 x 2680 (Dia. x H)	✓	✓					
27000 L	Rainwater Tank	Round	Corrugated	3700 x 2900 (Dia. x H)					✓	✓	
27250 L	Rainwater Tank	Round	Smooth	3650 x 3120 (Dia. x H)	✓	✓					
47300 L	Rainwater Tank	Round	Smooth	4580 x 3250 (Dia. x H)					✓	✓	



SLIMLINE TANKS

SIZE	DESCRIPTION	BODY	STYLE	DIMENSIONS (mm)	VIC	SA	NSW	ACT	QLD	FNQ	PRICE \$
550 L	Rainwater Tank	Slimline	Corrugated	1080 x 1080 x 590 (LWH)					✓	✓	
2100 L	Rainwater Tank	Slimline	Smooth	2420 x 1650 x 750 (LWH)	✓	✓					
2500 L	Rainwater Tank	Slimline	Smooth	2510 x 1910 x 780 (LWH)	✓	✓	✓	✓	✓	✓	
3000 L	Rainwater Tank	Slimline	Smooth	2690 x 2120 x 820 (LWH)	✓	✓	✓	✓	✓	✓	
3500 L	Rainwater Tank	Slimline	Smooth	3020 x 1915 x 780 (LWH)	✓	✓	✓	✓	✓	✓	
5000 L	Rainwater Tank	Slimline	Smooth	3035 x 1960 x 1160 (LWH)	✓	✓	✓	✓	✓	✓	

The Slimline wheels are a mode of transport only, when installing your tank an extra 130mm in height needs to be taken into account.



UNDERHOUSE TANKS

SIZE	DESCRIPTION	BODY	STYLE	DIMENSIONS (mm)	VIC	SA	NSW	ACT	QLD	FNQ	PRICE \$
2000 L	Under Deck	Rigid	Smooth	2360 x 550 x 1785 (LWH)	✓	✓	✓	✓	✓	✓	
1800 L	Bladder Tank	Flexible	Fabric	4500 x 800 x 1400 (LWH)	✓	✓	✓	✓	✓	✓	

*Due to the roto moulding process dimensions could vary +/- 30mm



TANK INCLUSIONS

Factory Fitted:	Supplied:
1 x 300mm Leaf Strainer, 1 x 90 degree x 90mm flanged outlet (overflow unit)	1 x 25mm brass ball valve (hose tap), 1 x 1" Poly nipple, 1 x 90mm Mozzie Screen
	1 x Decal 'Rain Water Do Not Drink', 1 x Corflute Sign 'Tank Water in Use'
	1 x Water Tank Installation Guide Booklet

Tank inclusions may vary from state to state dependant on the size and application



ACCESSORIES

ITEM	DESCRIPTION	VIC	SA	NSW	ACT	QLD	FNQ	PRICE \$
Pump Cover	Smooth Finish / 470mm x 550mm x 370mm	✓	✓	✓	✓	✓	✓	
Water Pumps	Rain Reviva Pump / 40lpm at 160kPa	✓	✓	✓	✓	✓	✓	
	Davey RainBank Submersible / S/S Home KRBS1	✓	✓	✓	✓	✓	✓	
	Davey RainBank Single Storey Home / KRB2	✓	✓	✓	✓	✓	✓	
	Davey RainBank Double Storey Home / KRB3	✓	✓	✓	✓	✓	✓	
	Grundfos Pump / CH2-30 PC15	✓	✓	✓	✓	✓	✓	
	Grundfos Pump / CH2-40 PC15	✓	✓	✓	✓	✓	✓	
First Flush	90mm	✓	✓	✓	✓	✓	✓	
Leaf Eater	90mm	✓	✓	✓	✓	✓	✓	
Rain Alert Tank Gauge	Wireless	✓	✓	✓	✓	✓	✓	

formit colour range -
10 contemporary
tank colours to
choose from...



1 Co-Wyn Cl Fountaindale NSW 2258
Tel: 02 4389 1555
Fax: 02 4389 1300
Email: information@formit.com.au
www.formit.com.au



Urban Water Storage Solutions



Distributed by

© blueonapacific

www.formit.com.au

URBAN RANGE 2009

SEE OVER PAGE FOR TANK ACCESSORIES

www.formit.com.au

Colours are a guide only and not for colour accuracy. We recommend checking your chosen colour against the actual sample of the product before purchasing.

FORMIT

why formit?

Because we make rainwater tanks easy.

We have the largest range on the East Coast of Australia, all built to Australian Standards. Harvesting rain water is something all of us should do. You can get a tank or accessory for just about any application. And, of course, you get a 10 year guarantee!

All you need to do is choose a tank that looks good and fits the space. And even that's easy. Our tanks are all designed to complement the aesthetic of your home. More to the point, they're designed to just fit in – in some cases, even disappear!

Tanks are our business. And it's a business we've been doing for 25 years. If we've learned one thing in that time, it's that making things easy for you, ultimately makes things easy for us. By adhering to the highest quality standards, we give you a tough tank that does its job properly. And by using only reputable resellers, we ensure you get the service you want and the advice you need.

And one other thing: we're Australian-owned. That's something we think is very important. It also means we know how tough Australian conditions are, and that our entire range of rainwater tanks can withstand those conditions. Our tanks are made using UV stabilised, food grade polyethylene and we put more resin in our tanks so the walls don't buckle. The slimlines are fitted with steel frames, for greater stability and strength (2500L, 3500L and 5000L only).

Check out our range on the following pages. We think you'll like it.



slimline tanks

Conserve water, and look good doing it, even when you have minimal space! Formit's extensive range of slimline tanks was designed with three things in mind to: "make it a sound design that's built to last", "make it fit and make it look inconspicuous." You'll have all the water you need to keep your gardens looking great, and you won't even notice where it's coming from. Our unique and innovative temporary wheel system eliminates heavy lifting and makes installation a breeze.

- 2100, 2500, 3000, 3500 and 5,000 litre capacity
- Best selling Slimline tank on the market
- Unique steel frame gives extra strength & stability (2500L, 3500L and 5000L only)
- Full range of colours available
- 10 Year Guarantee
- Unique temporary wheel system for easy manoeuvrability during installation (2500L, 3500L and 5000L only)
- Link multiple tanks together for additional capacity



2500L Slimline Smooth (Mist Green)



round tanks

If you have a big yard, expansive gardens or a pool (or your kids just love the sprinkler!), a Round Urban tank might be the most appropriate solution. They look great, they're surprisingly compact, and they're available in a wide range of sizes and colours. So you're sure to find one that blends in perfectly.

- 675 – 10,000 litre capacity
- Australia's largest range of tanks
- UV stabilised and food grade material
- Compliant with Australian Standards (AS4766)
- Full range of colours available
- 10 Year Guarantee
- Government Rebates available
- Can be connected to toilet and washing machine
- Available in Smooth, Banded and Corrugated styles



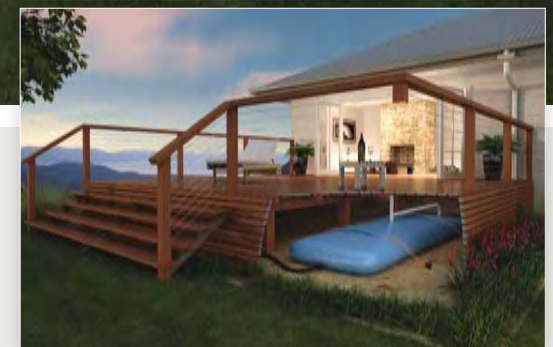
2500L Round Corrugated (Beige)

under house

If you have a bearers-and-joist house, or any sort of deck, chances are, you have a ready-made home for a water tank.

Under Deck (Under House) rainwater tanks are the ideal solution if you have no room to spare around the outside of your house, or you want to hide your tank altogether.

- 2,000 litre capacity rigid tank
- 1,800 litre capacity bladder tank (Blue only) see inset
- Strong and durable
- Sealed one-piece unit to protect against mozzies and other vermin
- Link multiple tanks for additional capacity
- 10 Year Guarantee
- Can be connected to toilet and washing machine



1800L Bladder Tank (Blue Only)



2000L Under Deck Rigid (Slate Grey)



round rural

Our Round Rural water tanks are for the farmers, breeders, market-gardeners, nurseries and acreage-owners. They're made to see you through the dry spells, even in the face of serious water consumption or irrigation requirements.

- 11,500 – 47,000 litre capacity
- Rigid single-piece construction using more resin for a thicker wall
- UV stabilised and food grade materials
- Compliant with Australian Standards
- Corrugated or smooth
- Full range of colours available
- 10 Year Guarantee
- Predicted 25 year lifespan (using Finite Element Analysis (FEA))



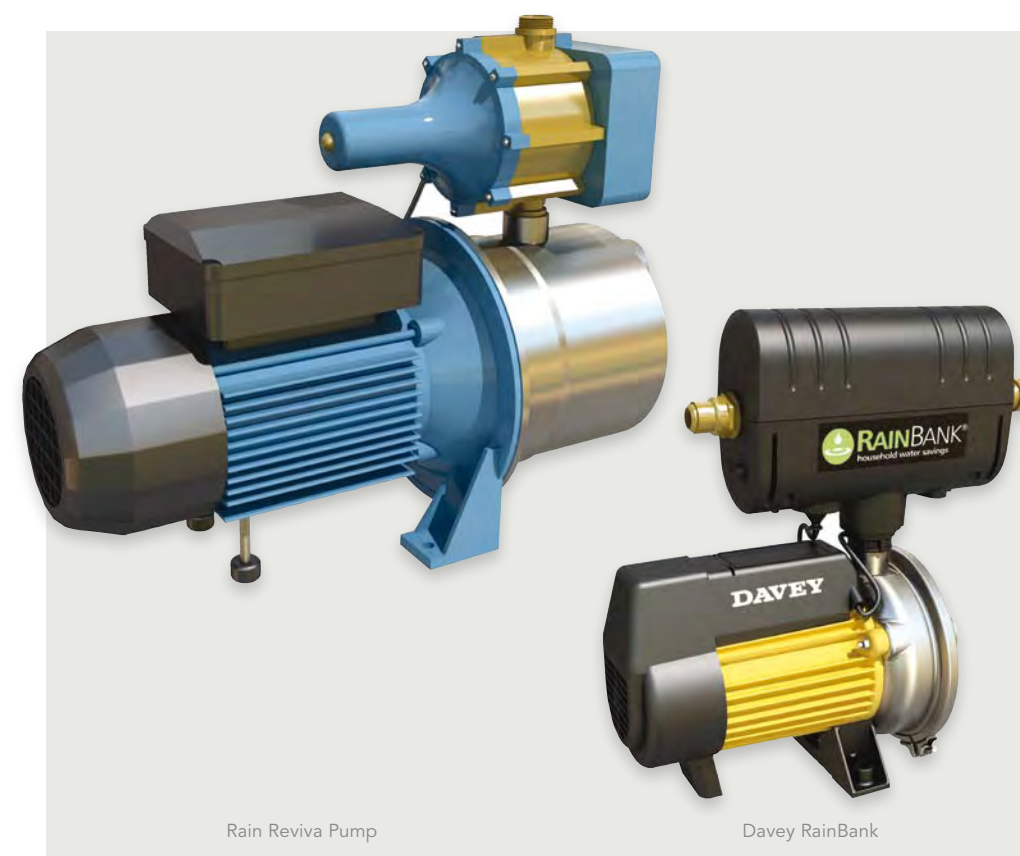
22500L Round Corrugated (Rivergum)



accessories

Formit tanks aren't just tough and great looking. They also come with a host of clever accessories. Accessories to increase catchment without increasing catchment area.

Accessories to keep contaminants out by diverting the initial flow of water when it first rains. Accessories to keep leaves, debris and mosquitoes out. Even accessories to remotely monitor a tank's water level.



Rain Reviva Pump

Davey RainBank

A rain reviva pump

With the Rain Reviva Pump, running water is as easy as turning on the tap. The Reviva automatically turns itself on when the tap is turned on, and off when the tap is turned off. It also turns itself off when the tank runs out of water. It pumps 40lpm at 160kPa, so it's ideal for the average home's laundry, toilet and garden hose. It's made from non-corrosive materials, so no rust-tasting water or rust marks in toilets attached to tank supply. And, of course, you can plug it into any standard power point.

davey rainbank

When there's water in the tank, it makes sense to use it for the household (toilets, washing machines, etc.). But Australia's rainfall is so up and down that it's good to have a backup.

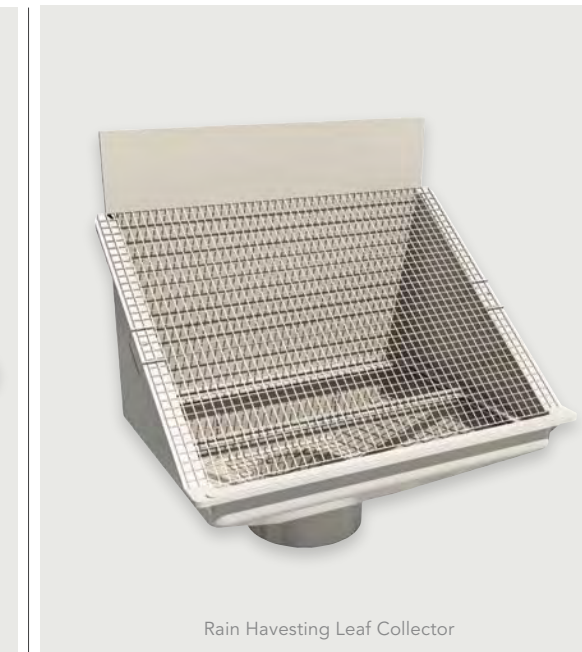
The Davey RainBank gives you that backup. When there's water in the tank, that's what it uses. If there's not, it switches back to mains water.



Pump Cover (Mountain Blue)

D pump cover

Formit's wide range of attractive, easy-to-install pump covers are suitable for most types of pumps. They're sturdy, unobtrusive and available in 10 different colours: Mist Green, Merino, Heritage Green, Heritage Red, Birch Grey, Rivergum, Beige, Slate Grey, Smooth Cream and Mountain Blue.



Rain Harvesting Leaf Collector

B leaf collector

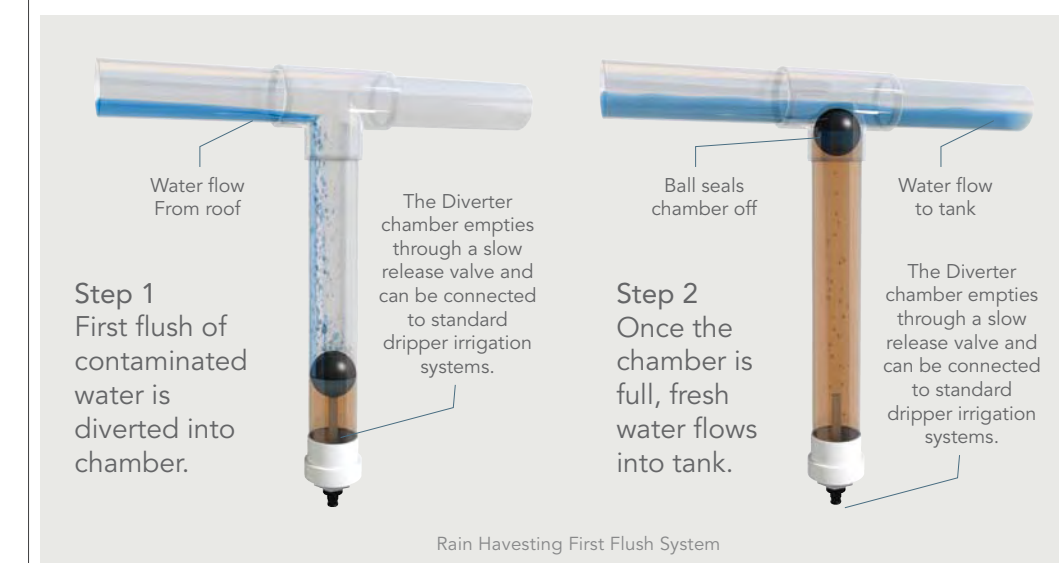
Stop leaves and other debris from clogging the downpipes, with a Rain Harvesting dedicated Leaf Collector. Comprised of two stainless steel mesh screens filtering inflow, the Rain Harvesting Leaf Collector is one of the most effective means available for keeping out leaves, mosquitoes and vermin.



Rain Harvesting Wireless Level Indicator

C wireless level indicator

With the Rain Harvesting Wireless Level Indicator, you will be able to monitor water levels without even leaving home. It continuously displays the tanks' level on a small LCD panel, up to 200m from the tank itself.



Rain Harvesting First Flush System

E first flush

When it starts raining, the first rush of water coming off the roof contains contaminants that you don't want in the tank. Rain Harvestings innovative First Flush device diverts that initial flow, so the only thing that goes in the tank is fresh, clean water.

FORMIT

WATER PRODUCTS

Water Storage Solutions



FORMIT

WATER PRODUCTS

1 Co-Wyn Cl Fountaindale NSW 2258
Tel: 02 4389 1555
Fax: 02 4389 1300
Email: information@formit.com.au
www.formit.com.au

Distributed by

© bluetonecreative

Colours are a guide only and not for colour accuracy. We recommend checking your chosen colour against the actual sample of the product before purchasing.

COMPANY PROFILE 2009



I think we all agree that water conservation is a critical issue. Only 3% of the world's water is fresh, and 99% of that is frozen. Many experts fear we will run out of water before we run out of oil. (You'll find more eye-opening water consumption statistics on page 16 of this brochure.)

So the question isn't whether to invest in a tank, it's which tank to invest in.

Not surprisingly, aesthetics plays a big part in that decision. It's not enough for your tank to just collect water; it also has to look good doing it. We know this, so we focus a lot of resources on ensuring our tanks are attractive and unobtrusive. Some even hide away altogether.

Of course, rainwater tanks also have to be tough and practical. Our range has you covered there too. Take our slimlines, for example. They're available in most Colorbond colours, and with their sturdy construction and temporary installation wheels, they're recognised as the best in the industry.

Have a browse through the following pages. We've tried to show our products in situ, to demonstrate just how they can blend with your home.

This brochure contains quite a few specs and other technical data, but if you have any questions, or you need advice on selecting or installing a tank, please don't hesitate to give us a call. Our friendly and helpful Customer Service Team will be only too happy to assist.

Thanks again for considering Formit Rainwater Tanks. We hope to hear from you soon.

Yours truly,

Mal Walker
Managing Director

TABLE OF CONTENTS



who is formit? 04

slimline tanks 08

round tanks 10

under house 12

accessories 14

benefits of rainwater harvesting 16

product specifications and colour range 18

who is formit?



We manufacture and supply rainwater tanks. Thousands of them. More, in fact, than just about anyone else in Australia. We certainly have the largest range on the East Coast!

We've been in the water tank business since 1983, we're wholly Australian-owned, and we have manufacturing and distribution plants in five locations across NSW, QLD and VIC.

why formit?

Why Formit? Because we make rainwater tanks easy. All you need to do is choose a tank fits your requirements. And we have so many great looking tanks that you're bound to find one that's just right. Or, more to the point, one that fits in perfectly – maybe even disappears!

We deliver on time, and we even give you a 10 year guarantee!

our difference

Tanks have been our business since 1983. And if we've learned one thing since then, it's that making things easy for you, ultimately makes things easy for us. We plan and quality control things properly, we get the job done faster, with fewer hassles and a much shorter lead-time. We treat you professionally, and deliver the results you're after.

We also think that being Australian-owned is very important. It means we know what Australians need – and we care about delivering it.

We know how tough Australian conditions are, and that our entire range of rainwater tanks can withstand those conditions.

Last, but certainly not least, we believe there's no substitute for having a real person answer the phone.

formit's experience and diversity:

We didn't become Australia's leading manufacturer of rainwater tanks overnight. In fact, we've been working at it for many years and it's taken a vast amount of manufacturing experience to get there.

Our manufacturing plants continue to produce portable toilets, concrete infrastructure products and a huge range of water products.

Our diverse experience combined with a long, rich and varied history ensures that our products are of the highest quality.

our manufacturing process

At Formit, we use quality hexane copolymer resin (a linear, low density polyethylene) designed specifically for water tank rotational moulding, and state-of-the-art, computer-controlled biaxial and rock & roll rotational moulding machines. Our tank designs undergo Finite Element Analysis (FEA) to ensure optimum long term performance, and the finished product is assessed using inhouse facilities that include ultrasonic thickness measurements and impact testing.

“We didn't become Australia's leading manufacturer of rainwater tanks overnight. In fact, we've been working at it for many years and it's taken a vast amount of manufacturing experience to get there.”

And, of course, all our tanks meet Australian standards governing manufacturing materials, durability and storage capability.

It's also worth mentioning that our manufacturing facilities are the safest in the industry. We care about our workers too!

australian standards compliant

Only a handful of manufacturers in Australia have achieved the independently assessed and audited AS 4766 compliance. We're one of them.

AS 4766 governs the design and manufacture of "Polyethylene storage tanks for water and some chemicals." It sets out specific requirements for Melt Flow Index, Thermal Stability, UV resistance, dispersion of pigments and additives, light penetration, stress cracking resistance and chemical resistance for non-buried, vertically installed tanks containing water, liquids used in food and beverage manufacture and chemical solutions at atmospheric pressure. Importantly, a number of rainwater tank rebate programs will soon demand AS 4766 product compliance in order for rebates to be paid (e.g. VIC Government rebate as of January 1st, 2009).

In addition to our own AS 4766

compliance, the polymers used in our tanks are compliant with AS 2070 (Food Grade) and AS 4020 (Drinking Water).

our manufacturing operations

With manufacturing and distribution operations in Queensland (Innisfail, Brisbane), New South Wales (Fountaindale) and Victoria (Ballarat, Montrose), we've got you covered, wherever you are on the East Coast. Add that to the largest product range, and you have a pretty impressive distribution footprint.

We've found that one of the best ways to remain successful, year after year, is to invest in innovation and to be responsive to the 'on-the-ground' needs of our customers. When our customers told us slimlines were one of the more difficult tanks to install because they're always put in poky spots, we came up with an Australian-first.

We put detachable wheels on them. Once you have the tank installed, just remove the wheels, and send them back to us in the supplied prepaid mailbag. (We recycle them to ease the strain on the environment.)

Our focus is on making tanks that are easier for resellers to sell, easier for installers to install, and easier for homeowners to love.

it's the right thing for the environment

1 million litres! That's how much water the average Australian uses in a year.

Only Americans use more

Even though only 0.007% of the world's water is usable! And even though

Australia is the driest inhabited continent on earth. So residential rainwater tanks aren't just a regulation, they're the right thing for the environment.

Fortunately, we can make a difference.

If every household installed a properly designed, well-maintained rainwater tank we would be helping the environment.

we came up with an Australian-first. We put detachable wheels on them.”

innovative & responsive

our business

Infrastructure products

Water products

Portable toilets

0 10 years 20 years 30 years 40 years

Manufacturing telco pits for Telstra for 30 years.



Manufacturing water tanks for 25 years.



Manufacturing portable toilets for 20 years.



slimline tanks

Each of Formit's extensive range of slimline tanks was designed with four things in mind: 1) make it a sound design, built to last; 2) make it fit; 3) make it look inconspicuous; and 4) make it easy to install. So they're ideal for even the tightest of spaces, and the most style-conscious of customers.

FEATURES

- 2,100, 2,500, 3,000, 3,500 and 5,000 litre capacity
- Best selling Slimline tank on the market
- Unique steel frame gives extra strength & stability (2500L, 3500L and 5000L only)
- 10 Year Guarantee (must be installed on a concrete slab)
- Unique temporary wheel system for easy manoeuvrability during installation (2500L, 3500L and 5000L only)
- Link multiple tanks together for additional capacity
- Full range of colours available



2500L Slimline Smooth (Mist Green)





round tanks

For homes with a big yard, expansive gardens or a pool, a Round Urban tank may be the most appropriate solution. They look great, they're surprisingly compact, and they're available in a wide range of colours. So you're sure to find one that blends in perfectly.

FEATURES

- 675 – 47,300 litre capacity
- UV stabilised
- Compliant with Australian Standards (AS4766)
- Food-grade interior materials
- Full range of colours available
- 10 Year Guarantee
- Can be connected to toilet and washing machine



5000L Round Banded (Birch Grey)

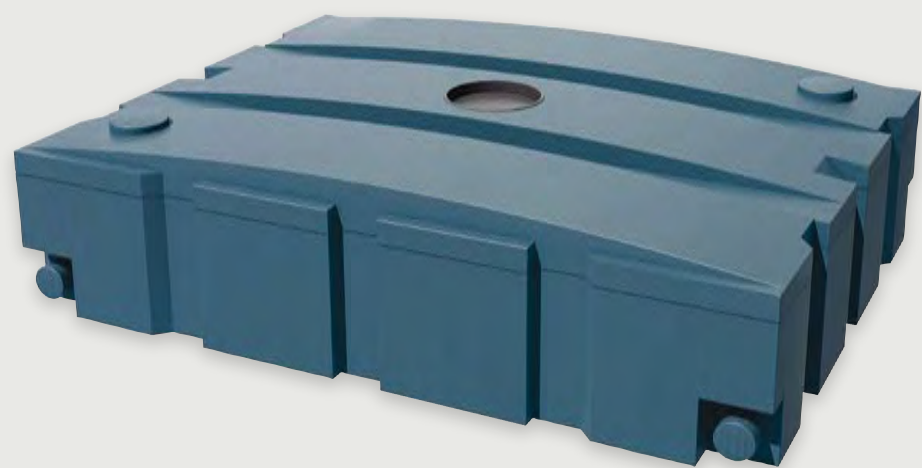
under house

Particularly useful for bearers-and-joist homes or those with a deck, Formit's Under House (Under Deck) rainwater tanks are an innovative way to save space without compromising on storage capacity.

Perfect if there's no room to spare around the outside of the house, or you need to hide the tank all together.

FEATURES

- 2,000 litre capacity rigid tank
- 1,800 litre capacity bladder tank (blue only) - see inset
- Link multiple tanks for additional capacity
- 10 Year Guarantee
- Can be connected to toilet and washing machine
- Food-grade interior materials
- Full range of colours available



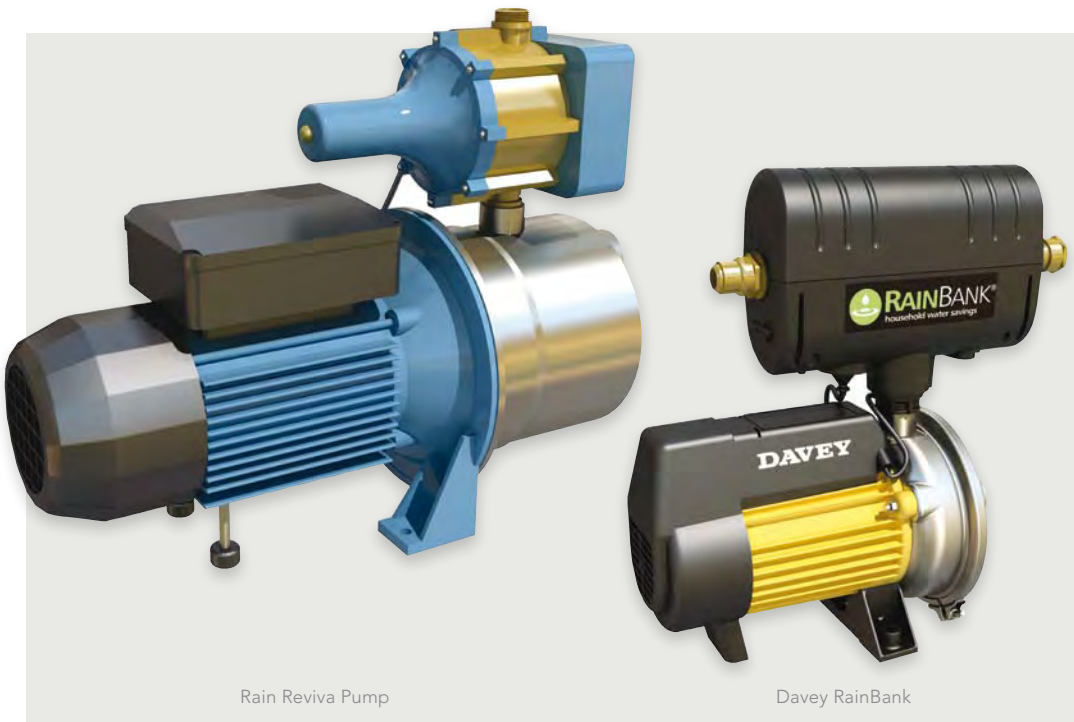
2000L Underdeck Smooth (Mountain Blue)



1800L Bladder Tank (Blue Only)

accessories

Formit tanks aren't just tough and great looking. They also come with a host of clever accessories. Accessories to increase catchment without increasing catchment area. Accessories to keep contaminants out by diverting the initial flow of water when it first rains. Accessories to keep leaves, debris and mosquitoes out. Even accessories to remotely monitor a tank's water level.



A rain reviva pump

With the Rain Reviva Pump, running water is as easy as turning on the tap. The Reviva automatically turns itself on when the tap is turned on, and off when the tap is turned off. It also turns itself off when the tank runs out of water. It pumps 40lpm at 160kPa, so it's ideal for the average home's laundry, toilet and garden hose. It's made from non-corrosive materials, so no rust-tasting water or rust marks in toilets attached to tank supply. And, of course, you can plug it into any standard power point.



Pump Cover (Mountain Blue)

davey rainbank

When there's water in the tank, it makes sense to use it for the household (toilets, washing machines, etc.). But Australia's rainfall is so up and down that it's good to have a backup. The Davey RainBank gives you that backup. When there's water in the tank, that's what it uses. If there's not, it switches back to mains water.

D pump cover

Formit's wide range of attractive, easy-to-install pump covers are suitable for most types of pumps. They're sturdy, unobtrusive and available in 10 different colours: Mist Green, Merino, Heritage Green, Heritage Red, Birch Grey, Rivergum, Beige, Slate Grey, Smooth Cream and Mountain Blue.



Rain Harvesting Leaf Collector

B leaf collector

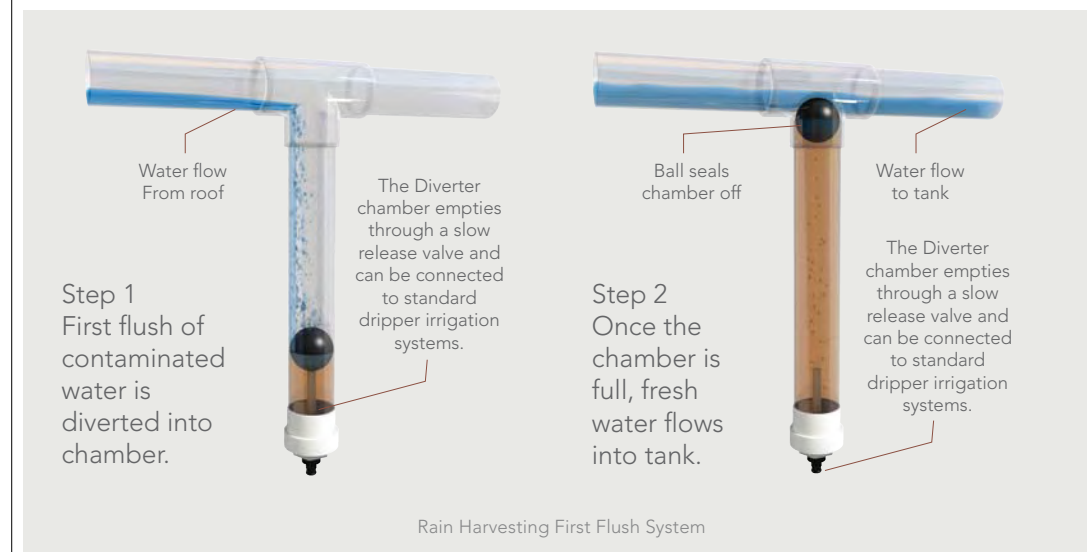
Stop leaves and other debris from clogging the downpipes, with a dedicated Rain Harvesting Leaf Collector. Comprised of two stainless steel mesh screens filtering inflow, the Rain Harvesting Leaf Collector is one of the most effective means available for keeping out leaves, mosquitoes and vermin.



Rain Harvesting Wireless Level Indicator

C wireless level indicator

With a Rain Harvesting Wireless Level Indicator, your customers will be able to monitor their water levels without even leaving home. It continuously displays the tanks' level on a small LCD panel, up to 200m from the tank itself.



Rain Harvesting First Flush System

E first flush

When it starts raining, the first rush of water coming off the roof contains contaminants that you don't want in the tank. Rain Harvestings innovative First Flush device diverts that initial flow, so the only thing that goes in the tank is fresh, clean water.

benefits of rainwater harvesting



When we harvest rainwater, everyone wins. Homeowners can use water liberally – even during droughts – and still save on water rates. Many even get a rebate. Farmers are more productive. Consumers enjoy lower prices.

Dam-water goes further. Our creeks, water habitats and organisms suffer less stormwater damage.

And, of course, rainwater is chemical-free, which is gentle on clothing and the vegetable garden. In other words, every tank takes us one step closer to long-term sustainability.

ideal use of rainwater

Ideally, we'd use rainwater for everything. There's no reason why most households shouldn't be using it for toilets, laundries and gardens.

That alone would reduce mains water consumption of a typical household by 70%. Throw in hot water systems, and consumption is reduced by up to 85%! Many government authorities certainly feel rainwater should be more widely used.

Some already require all new homes to have rainwater supplied toilets, laundries and gardens, and many offer rebates to homeowners who install rainwater systems into new or existing dwellings.

rainwater quality

Rainwater is the cleanest, softest water available. Unlike dam-water, it's fit for human use the moment it falls from the sky – no need for extensive treatment processes.

“Most of the world's water is un-usable. Only 3% is fresh, and 99% of that's frozen. That equates to just 1 teaspoon of usable water in every 100 litres! Yet still Australians use 1 million litres each, per year, a quarter of which goes down the toilet!”

And when it's stored in a properly designed, well maintained rainwater tank, nature takes care of contaminants, itself.

Naturally occurring biofilms line the inner surfaces of the tank, creating a continuous decontamination process.)

sustainability and environmental impact

Most of the world's water is un-usable. Only 3% is fresh, and 99% of that's frozen. That equates to just 1 teaspoon of usable water in every 100 litres! Yet still Australians use 1 million litres each, per year, a quarter of which goes down the toilet!

And our population is growing fast; it's predicted to increase by 45% in the next 30 years. If we don't start using it wisely, we may actually run out of water before we run out of fuel. In fact, UNESCO says water shortage will be a world-wide problem in just over 10 years! And water shortage means food shortage and – eventually – health crisis.

Fortunately, we can make a difference. If every household installed a properly designed, well maintained rainwater tank, we could reduce our reliance on reservoir water by up to 85%, freeing up rainwater supplies, so water is available where it's most needed.





ROUND TANKS

SIZE	DESCRIPTION	BODY	STYLE	DIMENSIONS (mm)	VIC	SA	NSW	ACT	QLD	FNQ	PRICE \$
675 L	Rainwater Tank	Rnd. Tall	Smooth	760 x 1700 (Dia. x H)	✓						
900 L	Rainwater Tank	Round	Smooth	1070 x 1420 (Dia. x H)	✓						
1000 L	Rainwater Tank	Round	Corrugated	900 x 1850 (Dia. x H)					✓	✓	
1200 L	Rainwater Tank	Round	Corrugated	1200 x 1330 (Dia. x H)					✓	✓	
1500 L	Rainwater Tank	Round	Banded	1086 x 1820 (Dia. x H)	✓	✓	✓	✓	✓		
2250 L	Rainwater Tank	Round	Smooth	1500 x 1720 (Dia. x H)	✓	✓					
2250 L	Rainwater Tank	Squat	Smooth	1750 x 1200 (Dia. x H)	✓	✓					
2500 L	Rainwater Tank	Round	Corrugated	1516 x 1715 (Dia. x H)					✓	✓	
2500 L	Rainwater Tank	Round	Corrugated	1320 x 2060 (Dia. x H)	✓	✓	✓	✓	✓	✓	
3000 L	Rainwater Tank	Round	Corrugated	1410 x 2300 (Dia. x H)					✓	✓	
3000 L	Rainwater Tank	Round	Banded	1400 x 2270 (Dia. x H)	✓	✓	✓	✓	✓		
3200 L	Rainwater Tank	Round	Smooth	1750 x 1790 (Dia. x H)	✓	✓					
4500 L	Rainwater Tank	Round	Corrugated	1820 x 1980 (Dia. x H)	✓	✓					
5000 L	Rainwater Tank	Round	Corrugated	2015 x 1850 (Dia. x H)					✓	✓	
5000 L	Rainwater Tank	Round	Banded	2010 x 1970 (Dia. x H)	✓	✓	✓	✓	✓	✓	
5000 L	Rainwater Tank	Round	Smooth	1860 x 2100 (Dia. x H)	✓	✓					
7000 L	Rainwater Tank	Round	Corrugated	2615 x 1625 (Dia. x H)	✓	✓	✓	✓			
7000 L	Rainwater Tank	Round	Corrugated	2570 x 1770 (Dia. x H)					✓	✓	
9000 L	Rainwater Tank	Round	Corrugated	2540 x 2300 (Dia. x H)	✓	✓					
10000 L	Rainwater Tank	Round	Banded	2560 x 2260 (Dia. x H)	✓	✓	✓	✓	✓		
10000 L	Rainwater Tank	Round	Smooth	2470 x 2480 (Dia. x H)	✓	✓					
11500 L	Rainwater Tank	Round	Corrugated	2570 x 2520 (Dia. x H)					✓	✓	
13500 L	Rainwater Tank	Round	Corrugated	3050 x 2400 (Dia. x H)	✓	✓					
22500 L	Rainwater Tank	Round	Corrugated	3650 x 2500 (Dia. x H)			✓	✓	✓	✓	
22700 L	Rainwater Tank	Round	Corrugated	3650 x 2950 (Dia. x H)	✓	✓					
22700 L	Rainwater Tank	Round	Smooth	3650 x 2680 (Dia. x H)	✓	✓					
27000 L	Rainwater Tank	Round	Corrugated	3700 x 2900 (Dia. x H)					✓	✓	
27250 L	Rainwater Tank	Round	Smooth	3650 x 3120 (Dia. x H)		✓					
47300 L	Rainwater Tank	Round	Smooth	4580 x 3250 (Dia. x H)	✓	✓			✓	✓	



SLIMLINE TANKS

SIZE	DESCRIPTION	BODY	STYLE	DIMENSIONS (mm)	VIC	SA	NSW	ACT	QLD	FNQ	PRICE \$
550 L	Rainwater Tank	Slimline	Corrugated	1080 x 1080 x 590 (LWH)					✓	✓	
2100 L	Rainwater Tank	Slimline	Smooth	2420 x 1650 x 750 (LWH)	✓	✓					
2500 L	Rainwater Tank	Slimline	Smooth	2510 x 1910 x 780 (LWH)	✓	✓	✓	✓	✓	✓	
3000 L	Rainwater Tank	Slimline	Smooth	2690 x 2120 x 820 (LWH)	✓	✓	✓	✓	✓	✓	
3500 L	Rainwater Tank	Slimline	Smooth	3020 x 1915 x 780 (LWH)	✓	✓	✓	✓	✓	✓	
5000 L	Rainwater Tank	Slimline	Smooth	3035 x 1960 x 1160 (LWH)	✓	✓	✓	✓	✓	✓	

The Slimline wheels are a mode of transport only, when installing your tank an extra 130mm in height needs to be taken into account.



UNDERHOUSE TANKS

SIZE	DESCRIPTION	BODY	STYLE	DIMENSIONS (mm)	VIC	SA	NSW	ACT	QLD	FNQ	PRICE \$
2000 L	Under Deck	Rigid	Smooth	2360 x 550 x 1785 (LWH)	✓	✓	✓	✓	✓	✓	
1800 L	Bladder Tank	Flexible	Fabric	4500 x 800 x 1400 (LWH)	✓	✓	✓	✓	✓	✓	

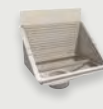
*Due to the roto moulding process dimensions could vary +/- 30mm



TANK INCLUSIONS

Factory Fitted:	1 x 300mm Leaf Strainer 1 x 90 degree x 90mm flanged outlet (overflow unit)
Supplied:	1 x 25mm brass ball valve (hose tap) 1 x 1" Poly nipple 1 x 90mm Mozzie Screen 1 x Decal 'Rain Water Do Not Drink' 1 x Corflute Sign 'Tank Water in Use' 1 x Water Tank Installation Guide Booklet

Tank inclusions may vary from state to state dependant on the size and application



ACCESSORIES

ITEM	DESCRIPTION	VIC	SA	NSW	ACT	QLD	FNQ	PRICE \$
Pump Cover	Smooth Finish / 470mm x 550mm x 370mm	✓	✓	✓	✓	✓	✓	
Water Pumps	Rain Reviva Pump / 40lpm at 160kPa	✓	✓	✓	✓	✓	✓	
	Davey RainBank Submersible / S/S Home KRBS1	✓	✓	✓	✓	✓	✓	
	Davey RainBank Single Storey Home / KRB2	✓	✓	✓	✓	✓	✓	
	Davey RainBank Double Storey Home / KRB3	✓	✓	✓	✓	✓	✓	
	Grundfos Pump / CH2-30 PC15					✓	✓	
	Grundfos Pump / CH2-40 PC15					✓	✓	
First Flush	90mm	✓	✓	✓	✓	✓	✓	
Leaf Eater	90mm	✓	✓	✓	✓	✓	✓	
Rain Alert Tank Gauge	Wireless	✓	✓	✓	✓	✓	✓	

formit colour range - 10 contemporary tank colours to choose from...



Smooth Cream



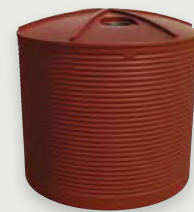
Merino



Beige



Birch Grey



Heritage Red



Mist Green



Rivergum



Heritage Green

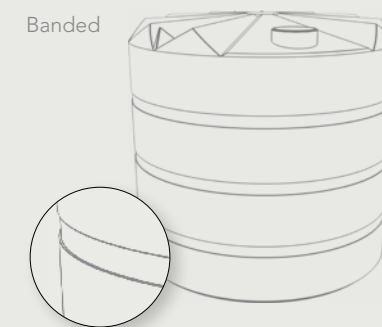


Mountain Blue

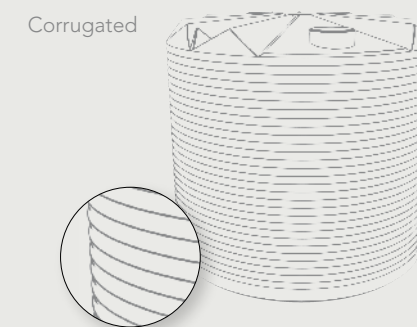


Slate Grey

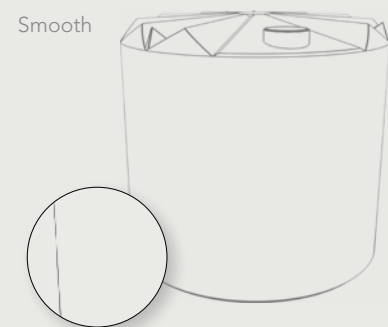
formit tank range - 3 tank styles to choose from...



Banded



Corrugated



Smooth