

NU-CORE<sup>®</sup> A2FR  
Non-combustible



# Geopolymer

## A new standard in Fire rated façade materials

Nu-core® A2FR fills the gap for Aluminium composite panel applications where traditional ACP products were limited. Strict Fire requirements are increasing in many regions and are phasing out the use of B1 Aluminium Composite Panels.

Nu-core® A2 Fireproof Geopolymer Composites has passed A2 s1 d0 - zero fire spread and or droplets when exposed to fire, proving that the safe performance of Nu-core® is the next generation in Prefinished Composite Panels for interiors and exteriors of all building types.

Designed and manufactured specifically for façade applications.



Advanced façade  
technology, with  
safety in mind.

#### **Nu-core® - Fire Performance**

Nu-core® A2FR is non-combustible, non-inflammable. The Geopolymer core was originally designed for the aviation industry, as it does not ignite, burn or release any toxic fumes under extreme heat. Fire safety in pre-finished façades is at a new level with Nu-core®.

#### **Superior Flatness**

The Nu-core® laminating process is produced on a continuous production line, which results in excellent flatness. Allowing for large pre-finished panels, pressed in large volumes with lower embodied energy and lower cost.

#### **Workability**

Nu-core® is easy to cut, bend, groove and shape. Fully compatible with the German awarded Smartfix® façade fixing system. No face caulking or mastic joints or complicated cassette fixing methods required.

#### **Minimal Impact On the Environment**

Both Nu-core® and façade system can be fully recycled at the end of the lifecycle of the building and re-used on new projects.



A2 Fire Rated



Smartfix® Compatible



Sustainable Core  
& System Technology

#### Features

- + A2 Fire rated Geopolymer inorganic core
- + Non-combustible
- + Sustainable natural core
- + High tensile skin
- + Infinite range of finishes and textures
- + Impressive range of metal finishes

#### Benefits

- + Large panel sizes
- + Simple machining
- + Extensive life span, low maintenance
- + Weatherproof, self cleaning
- + Recyclable, environmentally friendly
- + Excellent impact resistance and sound dampening properties
- + Compatible with Smartfix® fixing system

# Visualise the end result through Nu-core® iD



## Exterior & Interior Finishes

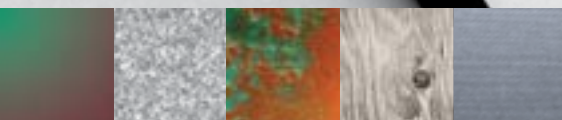
Beckers Application – Unlimited Range of colours, awarded the EU 'Eco-Flower' Symbol for environmental safety. Plus the endorsement of the Swedish Asthma and Allergy Association.

- + PVDF / PE
- + Spectra
- + Nano
- + Textured – Wood grain, Stone, Embossed
- + Brushed
- + Mirror
- + Ceramic

Exact colour matching made easy with Beckers Spectrophotometer.

## Specialised Metal Finishes

- + Stainless Steel 316 and 304 – Brushed Finish / Mirror Finish
- + Copper – Brass Finish / Antique Copper / Patina Copper
- + Zinc





Nu-core®  
Infinite Possibilities



#### **Nu-core® Solid**

Bright red to soft colours. A good choice to create a uniformed appearance without the special effects.

#### **Nu-core® Metallic**

Viewing from different angles and in various lighting conditions, will accentuate the metallic look and depth of these colours.

#### **Nu-core® Spectra**

Enchanting iridescent colours created through special colour pigments and various colour gradients. A unique effect and depth of colour from all angles of viewing.

#### **Nu-core® Wood**

Unlike real wood. Nu-core® wood surfaces are easy to clean and maintenance free and do not need re-staining like real wood. Available in a variety of timber grain finishes

#### **Nu-core® Anodized**

For optimum protection against corrosion of aluminium, anodizing is the ideal choice. A unique aesthetic appearance which brings the façade to life. The thickness of the anodising layer of Nu-core® is 20 µm.

#### **Nu-core® Real Metals**

Natural materials which last the test of time and age beautifully.

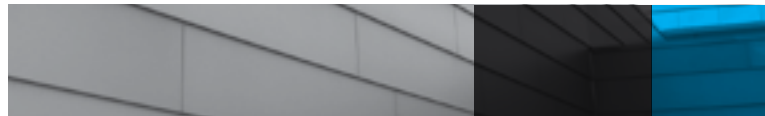
- + Stainless Steel – brushed or mirror
- + Copper – Patina Copper, Antique Copper
- + Zinc.

#### **Nu-core® Ceramic**

Resistant to extreme temperatures, pollution and graffiti. Ceramic materials are processed at high temperatures using in-organic materials. Ideal for interior applications.

#### **Nu-core® Art-Panel**

Manually and artistically designed, each Nu-core® panel is coated individually to create a truly unique finish.



# Nu-core<sup>®</sup>

## Product Specification

---

### ONE-SIDE STOVE-LACQUERED

---

Thickness	2mm, 3mm, 4mm, 5mm
Width	1250mm 1500mm
Length	up to 8000mm

---

\*Custom sizes on request

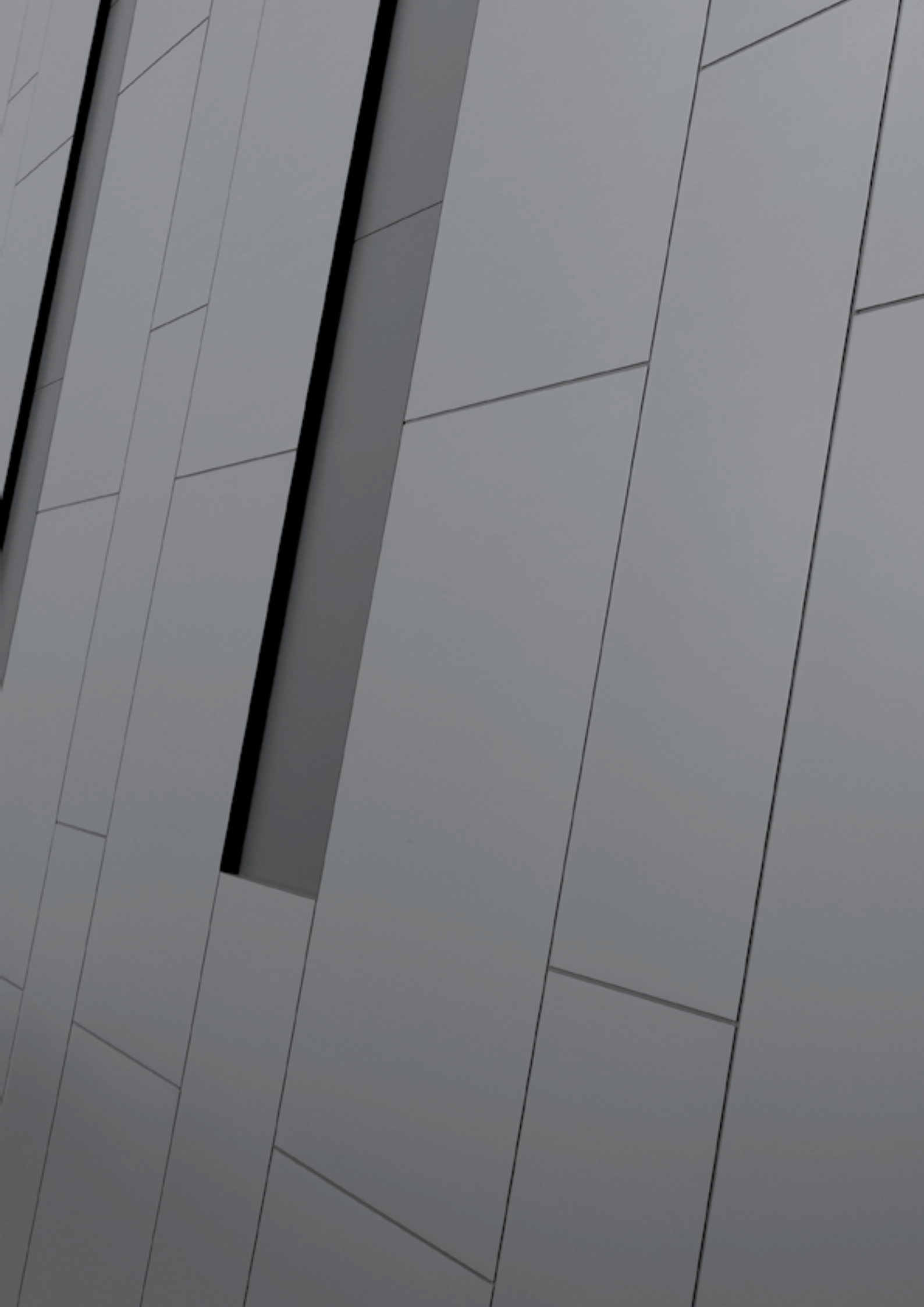
---

### DIMENSIONAL TOLERANCES

---

Thickness		±0.2mm
Width		.0/+4mm
Lengths	1000-4000mm	.0/+6mm
Lengths	4001-8000mm	.9/+10mm

---



For all enquiries and support regarding all Nu-core® products, please contact:



+61 2 93314065



support@nu-core.com.au

**nu-core®**

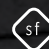
Suite 3  
50 Stanley Street  
East Sydney, NSW 2010  
Sydney Australia  
P: +61 2 9331 4065  
F: +61 2 9331 8295  
-

P.O. Box 152  
Darlinghurst, NSW 2010  
-

[www.nu-core.com.au](http://www.nu-core.com.au)



Intertek

 smartfix®



red dot design award



Printed on 100% recycled paper stock.