



**Keystone Acoustics**  
Architectural acoustic panelling solutions

**KA**

*For more than 40 years, Keystone Acoustics has been opening new possibilities in architectural design with its acoustic panelling solutions, engineered for optimum performance.*

*The Australian owned and operated company keeps redefining its processes and machinery to create patterned, perforated and slotted innovations that breathe new life into commercial projects.*

*Showcased in many of Australia's iconic buildings, Keystone Acoustics' solutions combine the widest range of quality substrates with the latest in innovative finishes to deliver acoustic performance, durability and design versatility. Panels are engineered to suit diverse applications – from contemporary office fitouts to exemplary facades.*



## Diverse materials

Keystone Acoustics can work with most materials with no minimum order quantity. These include, but are not limited to the following substrates:

- Fire retardant E0 MDF Group 1 certified
- MDF and veneered MDF
- Plywood and veneered plywood
- Plasterboard (including impact resistant)
- Fibre cement and compressed fibre cement
- Laminated and pre-finished panels
- Composite aluminium panels
- Acrylic and fabric panels

They can also supply pre-finished custom-sized plywood, compressed fibre cement, MDF, plasterboard panels and timber veneers with unique pigments, including metallic finishes to enhance your designs.

## Quality craftsmanship

With over 70 staff – including engineers, architectural designers, CAD draftsmen and national project managers – Keystone Acoustics is sure to bring your vision to life.

The company's environment and values foster continual improvement of its people, knowledge, resources and service. Quality is paramount, with no compromise in complying with all industry standards.

Proving its place as the industry leader in acoustic panel solutions, Keystone Acoustics' craftsmanship – and the design flair of leading architects and designers – is showcased in the following commercial projects:

- The University of Sydney, Camperdown Campus  
Jane Foff Russell Building
- University of Technology Sydney  
Design & Architecture Building 6, Level 7
- Cube at Campbelltown Catholic Club
- St. Vincent's Hospital, Darlinghurst  
Victor Chang Bio-Technology Research Centre
- Realm Hotel, Canberra ACT  
Hospitality/Accommodation Fit out (Award-winning project)
- The Kings School  
Educational Facility – Recreational Sports Hall

Project images can be viewed online at

**[www.keyportfolio.com.au](http://www.keyportfolio.com.au)**

*St. Vincent's Hospital featuring KEY-LENA.*

### Stunning detail

The desire to innovate – that's why the team at Keystone Acoustics is constantly researching new techniques and developing tools to create complex and intricate patterns for the widest range of materials, thicknesses and finishes.

Big plans? Keystone Acoustics relishes the challenge of making them reality.

### Accessible technical support

Keystone Acoustics understands that information and technical details are a vital part of your creative process.

You can access information online at:

**www.keystoneacoustics.com.au**

If you'd like product samples or want to speak to a project manager, phone **(02) 9604 8813**

#### Front cover

Main shot: KEY-ENDURA at St. Vincent de Paul Ozanam Learning Centre,  
Left inset: KEY-PLY in University of Wollongong lecture theatre,  
Right inset: St. Vincent's Hospital features KEY-LENA ceiling panels.

#### Back cover

KEY-BOARD on show at Rozelle's Rosebud Restaurant.

# CONTENTS

## Services

Slotting, perforating and patterning ..... p4-5

## Applications and substrates

KEY-PLY hoop pine plywood ..... p6

KEY-LENA MDF, medium density fibre..... p7

KEY-ECLIPSE fire rated 12mm MDF – Group 1 ..... p8

KEY-BOARD plasterboard ..... p9

KEY-ENDURA fibre cement ..... p10

KEY-KOMPRESS compressed fibre cement..... p11

KEY-SWISS composite aluminium..... p12

KEY-FABRICA fabric finish..... p12

KEY-FORMLINERS precast concrete ..... p13

KEY-DESIGNA custom engineered, any materials ..... p14

Fixing systems ..... p15

Partnering with architects and engineers ..... p15

Acoustic performance

Design versatility

Durability



## AT YOUR SERVICE

You can rely on Keystone Acoustics to provide quality ceiling, lining and wall panels engineered for superior acoustic performance using its expert slotting, patterning and perforating techniques. Plain panels are also available.

Solid experience and advanced manufacturing capabilities allow Keystone to offer acoustic panels custom designed for your requirements – cost effectively.

Production machines are linked to off-line programming, ensuring accuracy and product consistency.

Fixing apertures, slotting and radius corners can all be added in Keystone's production facility. This is particularly beneficial if the perforated panel is to be fitted as part of a larger fabrication or structure.

All Keystone Acoustic panels are finished to the highest standard, ready for installation.

### Perforations and slots

Different perforation and slot patterns produce different acoustic results. Keystone Acoustics can work in with your requirements to provide the best acoustic and aesthetic solution.

There are five basic perforation patterns to choose from:

- KP1 – KP5

Please note that custom patterns are also available.

There are 12 standard slot patterns.

- KS1 – K12

Please note that custom patterns are also available.

Examples of layouts and drawings are available online.

If you have a particular requirement Keystone Acoustics will work with you to develop a solution that performs to your requirements.

### Features and benefits

Perforated panels and slotted panels offer a number of features and benefits:

- increased noise reduction
- aesthetic enhancement
- decorative profiling
- partitioning
- flexible range of patterns available
- easy installation
- concealed fixing system
- light cutouts
- access panels

### Custom patterning

To meet the growing demand for unique-looking panels, Keystone Acoustics can provide:

- a variety of hole shapes and thicknesses
- custom hole patterns
- custom panel shapes
- custom material specification
- aesthetic designs
- functional fabrics
- decorative materials

With a range of production-ready patterns available to suit a variety of materials and substrates, virtually any shape and type of panel can be created. The maximum panel size available is influenced by the material thickness and specification, along with the pattern required.

You can choose hole shapes from Keystone's continually-growing tooling library or new designs can be created. Keystone Acoustics' expert consultants will discuss your requirements and advise on tooling solutions.

### Software solutions

Keystone Acoustics' unique software system allows your concepts to be brought to life more reliably and promptly.

The system accurately produces complex patterns and design features to meet your specifications, transferring them into reality.



## KEY-PLY hoop pine plywood

### Product description

Perforated KEY-PLY panels are engineered to create a natural and organic timber appearance. A variety of aesthetics can be created with pre-finishes including metallic, wood grain and pearl effects with a variety of perforation patterns and borders.

The inherent acoustic qualities of timber can be combined with compressed perforation techniques and backing materials to achieve optimum noise reduction, especially when used with KA100 backing.

### Applications

Interior and exterior walls and ceilings including:

- high traffic area walls
- building entrances and foyers
- high impact wall linings in shopping centres and hotels
- hallways
- auditoriums
- theatres
- studios

### Features and benefits

- natural feel and warmth of timber
- a myriad of finishes and styles
- low embodied energy
- thermal insulating properties
- cost effective
- versatile in design and shape
- impact resistant
- lightweight
- can be used with Rondo System®
- can be used with the Smartfix® Fixing System
- Australian-made

### Finishes

- veneers – vast selection from Keystone Acoustics' own range or your nominated veneer
- clear finish
- acid cat clear – matt, satin or full gloss finish
- acid cat stained – matt, satin or full gloss finish
- polyurethane – matt, satin or full gloss finish
- polyurethane stain – matt, satin or full gloss finish
- low VOC

*Note: Matt is non-gloss, Satin is 30%, Full gloss is 100%*



*Sydney University, Camperdown Campus:  
Jane Foff Russell building, lift lobbies (inset)  
KEY-PLY on show in the Realm Hotel, Canberra*

## KEY-LENA

**MDF (medium density fibreboard) E0, E1, moisture resistance and standard MDF**

### Product description

With an endless list of pre-finished options to choose from, KEY-LENA panels can be perforated, patterned, slotted or shaped to provide maximum noise reduction. For even better acoustic performance, KEY-LENA can be combined with KA100 backing.

### Applications

- internal acoustic walls
- decorative walls in hallways, hotels, clubs and offices, conservatories, libraries or auditoriums

### Features and benefits

- available in a range of finishes including timber grain, metallic and pearl
- cost-effective
- can provide the natural look of timber
- can be perforated, slotted or patterned
- good acoustic properties
- suitable for a variety of applications
- can be used with Rondo System®
- can be used with the Smartfix® Fixing System
- Australian-made

### Finishes

- laminates – including Laminex and Formica
- veneers – natural and reconstituted
- KEY-NIRVANA – vinyl concept veneer
- polyurethane – satin, full gloss, metallic, pearl, stained or low yellowing finish
- acid cat clear – matt, satin, pearl, metallic or full gloss finish
- acid cat stained – matt, satin or full gloss finish
- polyurethane – metallic, pearl, satin or full gloss finish
- polyurethane stain – matt, satin or full gloss finish
- low VOC

*Note: Matt is non-gloss, Satin is 30%, Full gloss is 100%*

*KEY-LENA slotted ceiling panels in Governor Phillip Towers, Sydney (top)  
Feature wall using KEY-LENA veneer finish at Laing O'Rourke, North Sydney (base)*



## KEY-ECLIPSE fire retardant MDF – Group 1 E0 Rating

### Product description

With fire retardant characteristics inherent in its MDF core, KEY-ECLIPSE is unrivalled as a strong, durable product for commercial applications. It can be perforated, slotted and enhanced with a range of decorative pre-finished options. KEY-ECLIPSE is one of the most eco-friendly fire rated boards available and offers greater sound reduction when combined with KA100 backing or a similar insulation .

### Applications

- internal acoustic walls
- decorative walls in hallways, hotels, clubs and offices, conservatories, libraries or auditoriums
- age care facilities
- hospitals
- educational facilities
- theatres
- auditoriums
- stairways
- lift lobbies

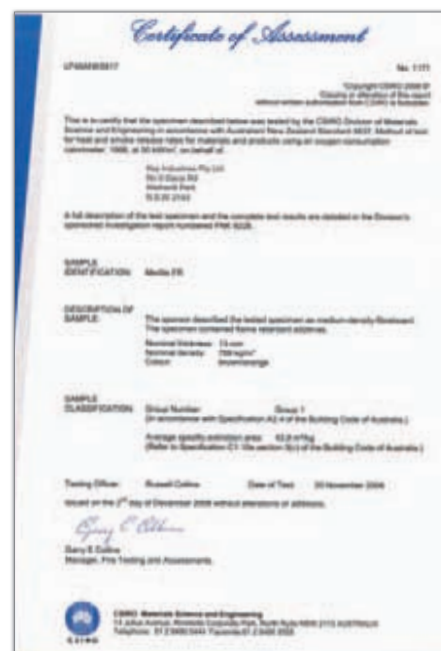
### Features and benefits

- inherently fire retardant
- can be perforated, slotted or patterned
- decorative feature
- high acoustic performance
- available in a range of finishes including timber grain, metallic and pearl
- cost effective
- can provide the natural look of timber
- suitable for a variety of applications
- can be used with the Smartfix® Fixing System

### Finishes

- painted
- laminates
- veneers
- reconstituted veneers
- clear satin finish
- KEY-NIRVANA – vinyl concept veneer
- polyurethane – satin, full gloss, metallic, pearl, stained or low yellowing finish
- low VOC – environmentally friendly

Note: Matt is non-gloss, Satin is 30%, Full gloss is 100%





## KEY-BOARD plasterboard

### Product description

Used for acoustic and decorative wall and ceiling lining, KEY-BOARD provides superior sound insulation, usually with 10-25% of the surface area open for maximum acoustic performance.

Excellent design flexibility is provided by the variety of panel sizes, perforations and patterns available, which can be customised.

KEY-BOARD can be used in recessed edge panels for seamless integration with other plaster features. Ask Keystone Acoustics about the diverse options available. KA100 backing can be added to enhance KEY-BOARD's acoustic properties and act as a structural deterrent to pests and insects.

### Applications

- interior acoustic wall and ceiling systems for lecture theatres, cinemas and auditoriums
- ceiling and wall feature panels
- partition walls

### Features and benefits

- high acoustic performance
- can be perforated, slotted or patterned
- can be fixed with Rondo System®
- suitable for a variety of applications
- available in a wide range of panel sizes
- lightweight and easy to install
- can be painted for longevity
- potential to be recycled
- has a low embodied energy
- offers broad design scope and can be easily used with other materials
- cost effective
- Australian-made

### Finishes and options

- undercoat option available (on-site painting by others after installation is recommended)
- plain or shaped panels
- tiles
- impact resistant board

*KEY-BOARD acoustic ceiling panels in The University of Sydney SciTech Library (top) and in the Rosebud Restaurant, Rozelle (base).*



# KEY-ENDURA fibre cement

### Product description

Produced from uniquely-perforated fibre cement, KEY-ENDURA's long lasting and durable qualities make it ideal for ceiling, wall and wet area applications. These strong, lightweight acoustic panels are available in various thicknesses and sizes and can be custom cut and shaped.

Choose from a range of finishes for artistic effect. Achieve additional soundproofing with KA100 sound absorptive backing.

### Applications

- internal acoustic walls
- eaves linings
- acoustic partitions
- fire and party walls
- office ceilings and walls
- clubs and hotels – smokers' terraces, outdoor gaming areas, alfresco dining areas
- foyers
- restaurants
- toilet partitions

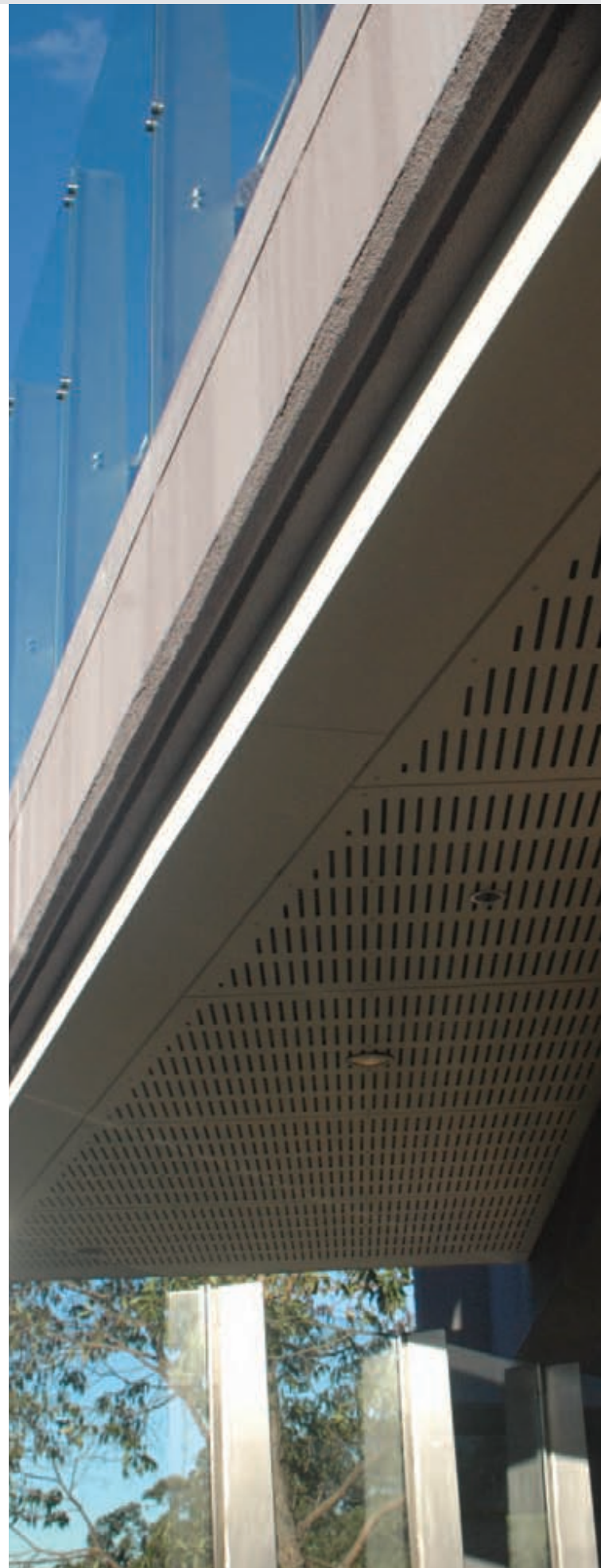
### Features and benefits

- cost effective
- durable
- fire resistant
- easy to install and maintain
- Australian-made

### Finishes and options

- undercoat option available (on-site painting by others after installation is recommended)
- plain or shaped panels
- cut-to-size panels
- tiles
- eaves lining

*KEY-ENDURA acoustic ceiling panels in the North Ryde RSL Outdoor lounge area*



## KEY-KOMPRESS compressed fibre cement

### Product description

Made from high density compressed fibre cement perforated to achieve excellent acoustic insulation, KEY-KOMPRESS is particularly effective in building facades and commercial cladding applications. It is strong and has a smooth surface which can be pre-sealed to minimize construction and painting time. KEY-KOMPRESS can be used with KA100 backing to maximise acoustic insulation.

### Applications

- internal walls
- exterior building facades
- eaves linings
- industrial buildings and warehouses
- schools and universities
- buildings in close proximity to salt water, swimming and leisure centres
- clubs – outdoor terraces, exterior partitions, smokers'/gaming areas

### Features and benefits

- impact resistant
- robust and long lasting
- weather resistant
- can withstand extreme temperature changes
- unaffected by rot, termites or salt water
- ideal for wet area applications
- excellent acoustic properties
- Australian-made

### Finishes and options

- undercoat option available (on-site painting by others after installation is recommended)
- plain or shaped panels
- cut-to-size panels
- tiles
- eaves lining



KEY-KOMPRESS wall panels feature in the outdoor seating area of Coronation Club (top) and Bass Hill RSL, Sydney

## KEY-SWISS

### composite aluminium

#### Product description

KEY-SWISS suits diverse environments due to its robust and resilient nature. It forms a perfect monolithic finish that will maintain its original condition for many years.

Generally available in 4mm or 6mm thicknesses, KEY-SWISS is available in a variety of panel sizes and colours.

#### Applications

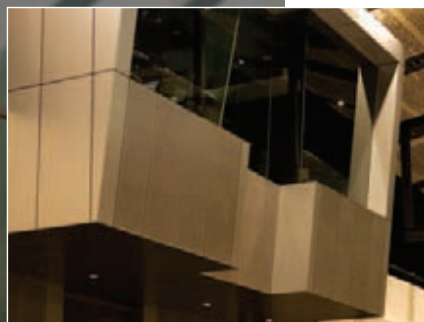
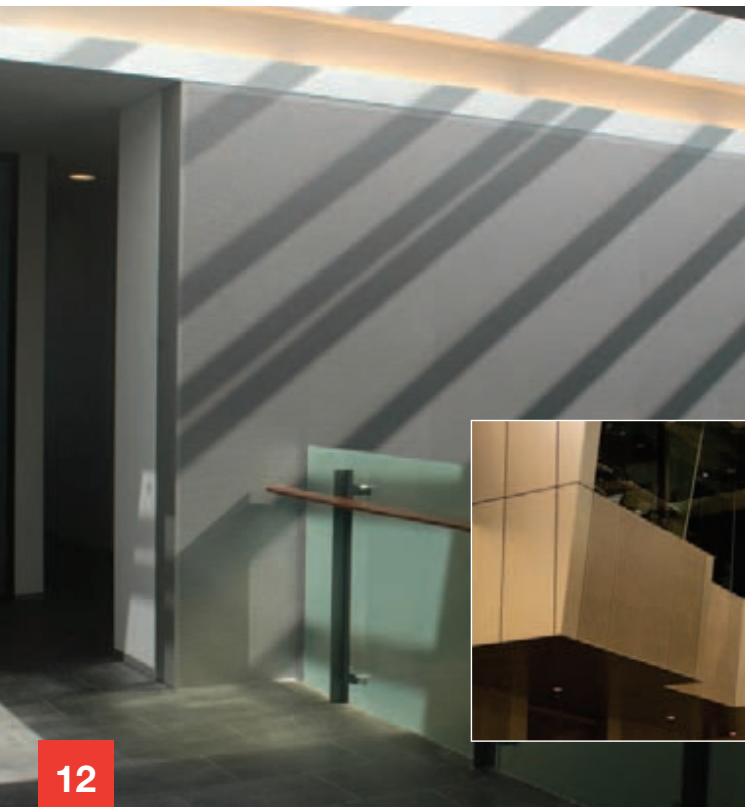
- exterior composite facades for a range of building styles
- internal walls and ceilings
- feature panels
- cutouts
- fire party walls

#### Features and benefits

- immune to sun damage
- impervious to water and moisture
- impact resistant
- low maintenance
- weather resistant

#### Options

- plain or shaped panels
- tiles
- custom shaped/patterned panels
- cutouts – signage, retail fit out



## KEY-FABRICA

### fabric

These designer acoustic panels made from MDF or ply substrate are covered with your choice of fabric or fabric from the Keystone Acoustics range, which offers high quality commercial grade acoustic and decorative fabrics.

KEY-FABRICA panels can create a dynamic look for a variety of applications. Fabric can be applied to the rear of panels allowing its texture or colour to show through perforations, slots or patterns.

#### Applications

- boardroom divisions
- restaurant feature walls and ceilings
- reception areas
- meeting rooms
- playrooms

#### Features and benefits

- acoustically sound
- any perforation pattern, hole, slot size
- variety of fabric options
- aesthetically appealing
- provides a point of attraction and difference
- lightweight
- cutout shapes and patterns



KEY-FABRICA in Nagle College Hall

KEY-SWISS in an entertainment and functions environment – Cube at Campbelltown Catholic Club

# KEY-FORMLINERS

## precast concrete

### Product description

Transform your concrete structures with Keystone Acoustics' KEY-FORMLINERS. Concrete has never looked so good. Whether for indoor or outdoor use, there are a variety of textures to choose from to give your project a unique look and feel. These textures cast light and shadow and their tactile surface transforms the ordinary into the extraordinary.

### Applications

- facades
- retaining walls
- feature walls
- partition and sound barrier walls
- landscaping

### Features and benefits

- the strength and durability of concrete with visually enticing surface texture and form
- can use a single texture or cleverly combine textures for contrast and artistic effect
- can be used to break up areas of smooth, uninteresting concrete

### Finishes

- brick textures
- wood textures
- flat textures – for a more subtle effect
- fractured textures – with more 'banded' forms
- ribbed textures
- fractured textures



# KEY-DESIGNA

## custom engineered

KEY-DESIGNA panels are one-of-a-kind solutions, custom engineered and specially manufactured for specific design criteria.

Keystone Acoustics will work with you to devise a precise solution tailored for your needs. This may include combining a range of materials, shaping and grooving techniques, perforated lettering for internal signage, decorative patterning and more.

### Applications

- feature walls
- any internal walls
- clubs and hotels
- schools
- office refurbishments

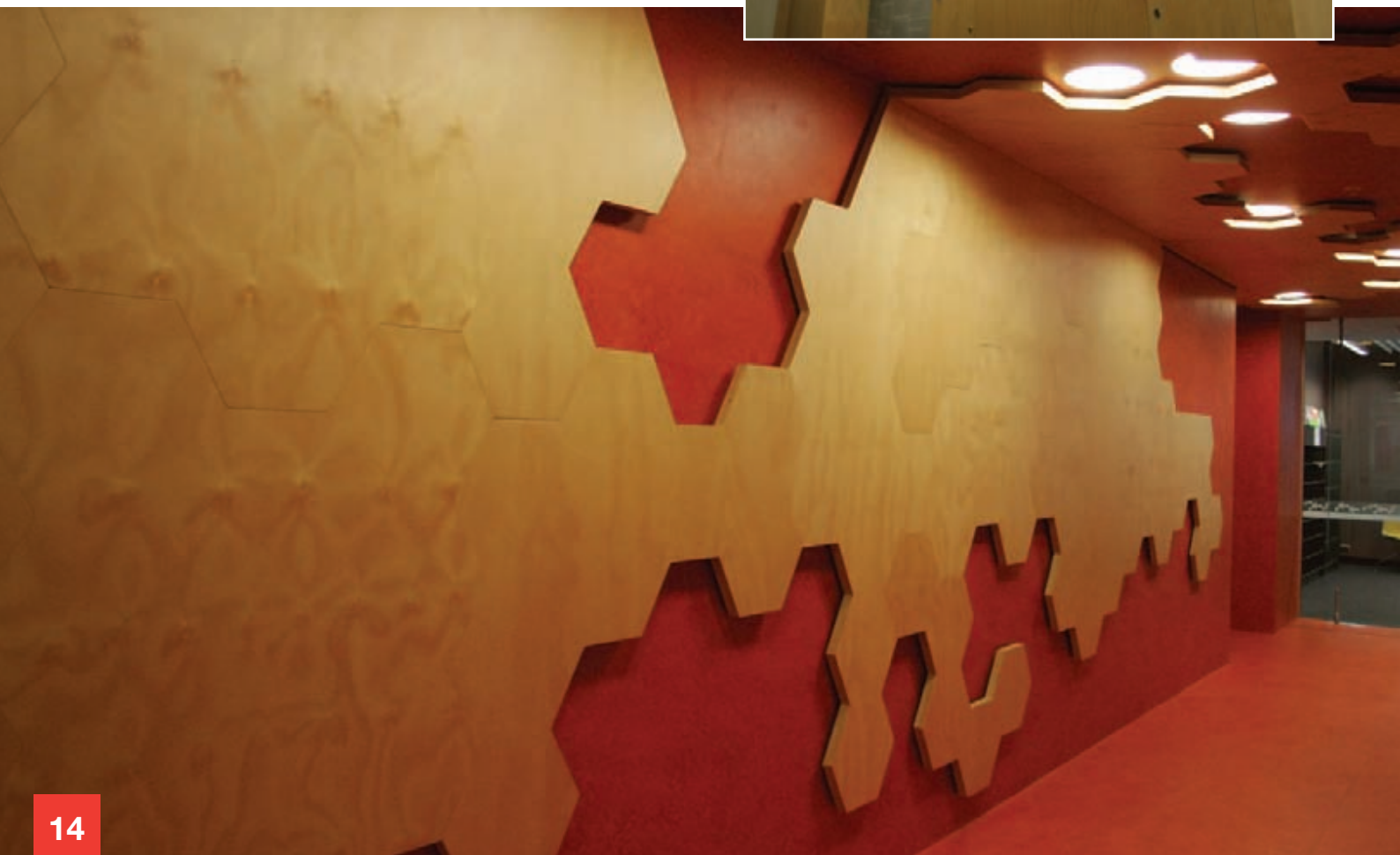
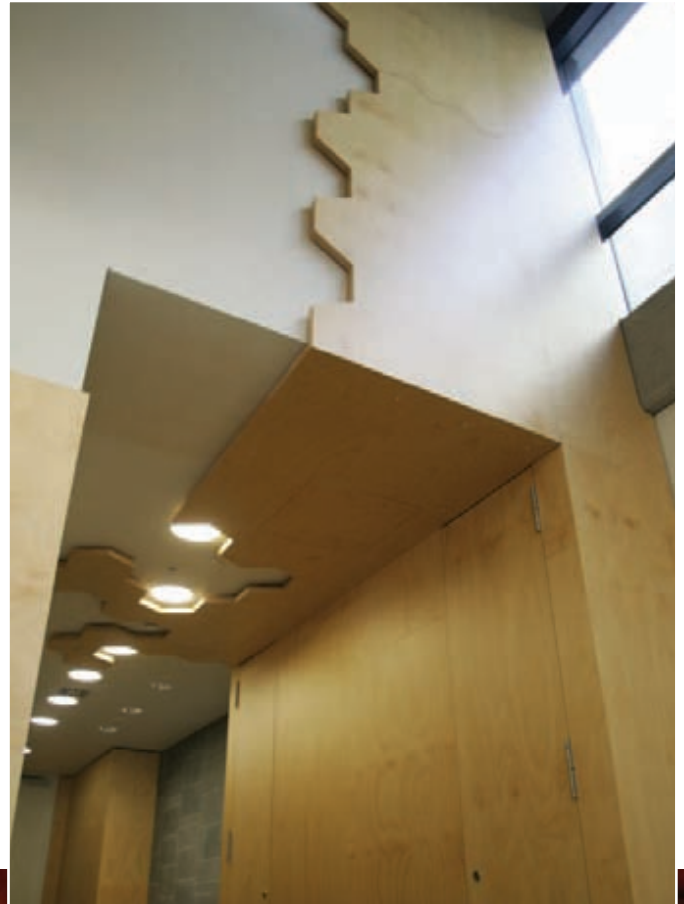
### Features and benefits

- endless design possibilities
- fully customised to your aesthetic and acoustic requirements

### Finishes and options

- 3D modular shapes

*The University of Sydney's Jane Foff Russell Building lift lobbies utilise KEY-DESIGNA acoustic wall and ceiling panels.*



Keystone Acoustics' panels can be installed on walls and ceilings using a variety of quality fixing systems, depending on the substrate selected.

If desired, panels can be provided with KA100, a sound-absorbing backing tested and developed with acoustic engineers to improve acoustic performance.

### Smartfix® Fixing System

This concealed facade system has been specifically designed to suit Australian conditions. Engineered for maximum design flexibility and enduring performance, Smartfix® is suitable for commercial and residential applications, whether internal or external.

The Smartfix® Fixing System satisfies architectural and aesthetic demands by providing a facade free of exposed fixings and sealants.

### Rondo Systems

These dry wall fixing systems for ceilings and walls can be used with most Keystone Acoustic panels, except KEY-ENDURA and KEY-KOMPRESS

Details of various fixing systems are available online at [www.keystoneacoustics.com.au](http://www.keystoneacoustics.com.au)

### Split Batten Systems

Keystone Acoustics' Split Batten Systems provide an excellent means of fixing both perforated and non-perforated panels. They lift the panel away from the wall and support the weight without any external holes.

### Partnering with architects and engineers

Keystone Acoustics' advanced systems, quality team and decades of experience allows it to work to your schedules, regardless of the complexity of the project and the quantity of panels and products required.

Once your requirements have been determined, they are issued to Keystone's production facility along with a priority list to ensure your order is on time and delivered in full.

Your order will be managed and facilitated by our experienced project managers and consultants who oversee production to ensure on-time site delivery, ready for installation.

Find out how Keystone Acoustics can enhance your next project. For more information on Keystone Acoustics' products or services, please phone (02) 96048813 or visit [www.keystoneacoustics.com.au](http://www.keystoneacoustics.com.au)





Level 1 , 7- 8 Davis Road,  
Wetherill Park, NSW 2164  
Tel: (02) 9604 8813  
Fax: (02) 9609 5348

[www.keystoneacoustics.com.au](http://www.keystoneacoustics.com.au)

**KA**