



Diamond series®







## Diamond series®

The Acculine Architectural DIAMOND series® provides superior impact resistant and durable screens, with a clean straight line to complement any modern architecture. Select from a range of configurations to suit individual applications.

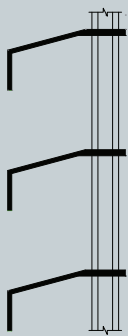
- Can be used for trafficable walkways.
- A diverse range of mounting methods.



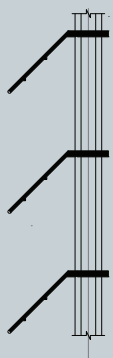


Sunscreen DSS Series

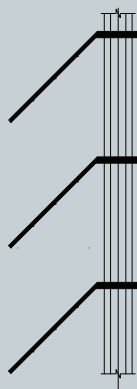
DSS 203/40-15



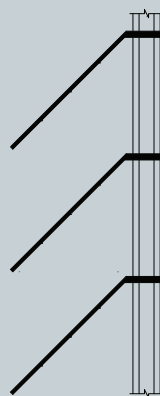
DSS 203/43



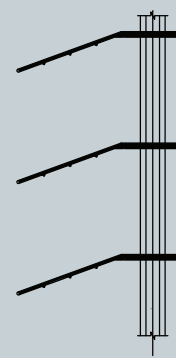
DSS 203/60



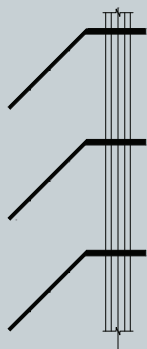
DSS 203/80



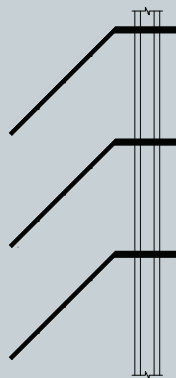
DSS 323/60-160



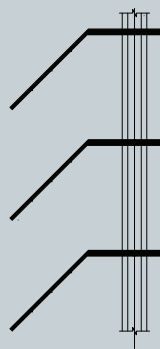
DSS323/60



DSS 323/80



DSS 403/60



DSS 323/60-100

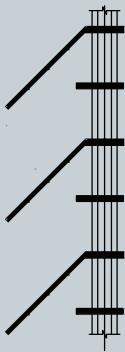




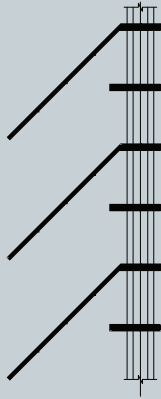


Trafficable DSC Series

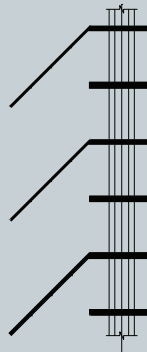
DSC 203/60



DSC 203/80



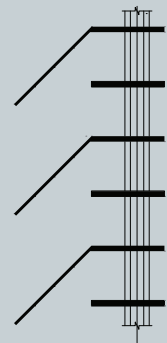
DSC 323/60



DSC 323/80



DSC 403/60



Grating DSG Series



Specification for working out model type for 40 x 3 flat bar screen in 80mm spacing anodised aluminium would read DSG40/3/30/A

MODEL	BAR SIZE	BAR THICKNESS	SPACING	FINISH
DSG	25mm	3mm 5mm	<b>30mm</b>	<b>Anodise = A</b> Powdercoat = PC
DSG	32mm	3mm		
<b>DSG</b>	<b>40mm</b>	<b>3mm</b> 5mm	40mm	
DSG	50mm	3mm 5mm	50mm	
DSG	55mm	3mm 5mm	60mm	
DSG	60mm	3mm 5mm	80mm	
DSG	65mm	3mm 5mm	90mm	
DSG	75mm	3mm 5mm	100mm	
DSG	80mm	3mm	120mm	
DSG	100mm	3mm	150mm	

## SUNSCREEN DETAILS

PROFILE	WEIGHT	REDUCTION FACTORS		SPAN-mm													
TYPE	Kg/m <sup>2</sup>	HORIZONTAL	VERTICAL	1200	1400	1600	1800	2000	2200	2400	2600	2800	3000	3200	3400	3600	3800
DSS 203/43	7.59	0.65	0.75	5.43	3.42	2.29	1.61	1.17	0.61	0.68	0.53						
DSS 203/60	8.93	0.65	0.75	10.46	6.59	4.41	3.10	2.26	1.70	1.31	1.03	0.82	0.67	0.55			
DSS 203/40-15	9.92	0.65	0.75	14.35	9.04	6.05	4.25	3.10	2.33	1.79	1.41	1.13	0.92	0.76	0.63	0.53	
DSS 203/80	10.40	0.65	0.75	19.29	12.15	8.14	5.72	4.17	3.13	2.41	1.90	1.52	1.23	1.02	0.85	0.71	0.61
DSS 323/60	10.58	0.65	0.75	17.96	11.31	7.58	5.32	3.88	2.91	2.24	1.77	1.41	1.15	0.95	0.79	0.67	0.57
DSS 323/80	12.05	0.65	0.75	30.31	19.09	12.79	8.98	6.55	4.92	3.79	2.98	2.39	1.94	1.60	1.33	1.12	0.95
DSS 403/60	11.59	0.65	0.75	24.28	15.29	10.24	7.19	5.24	3.94	3.03	2.39	1.91	1.55	1.28	1.07	0.90	0.76
DSC 203/60	10.34	0.85	0.85	10.87	6.85	4.59	3.22	2.35	1.76	1.36	1.07	0.86	0.70	0.57	0.48		
DSC 323/60	13.33	0.85	0.85	19.66	12.38	8.29	5.82	4.25	3.19	2.46	1.93	1.55	1.26	1.04	0.86	0.73	0.62
DSC 403/60	14.34	0.85	0.85	27.60	17.38	11.64	8.18	5.96	4.48	3.45	2.71	2.17	1.77	1.46	1.21	1.02	0.87

## GRATING DETAILS

PROFILE	WEIGHT	REDUCTION	SPAN - mm																
TYPE	Kg/m <sup>2</sup>	FACTOR	750	900	1050	1200	1350	1500	1800	2000	2200	2400	2600	2800	3000	3200	3400	3600	3800
DSG 253	5.20	0.60	6.64	3.84	2.42	1.62	1.14	0.83	0.48										
DSG 323	6.16	0.60	13.92	8.05	5.07	3.40	2.39	1.74	1.01	0.73	0.55								
DSG 403	7.26	0.60	27.19	15.73	9.91	6.64	4.66	3.40	1.97	1.43	1.08	0.83	0.65	0.52					
DSG 453	7.95	0.60	38.71	22.40	14.11	9.45	6.64	4.84	2.80	2.04	1.53	1.18	0.93	0.74	0.60	0.50			
DSG 503	8.64	0.60	53.10	30.73	19.35	12.96	9.10	6.64	3.84	2.80	2.10	1.62	1.27	1.02	0.83	0.68	0.57	0.48	
DSG 553	9.32	0.60	70.67	40.90	25.75	17.25	12.12	8.83	5.11	3.73	2.80	2.16	1.70	1.36	1.10	0.91	0.76	0.64	0.54
DSG 603	10.01	0.60	91.75	53.10	33.44	22.40	15.73	11.47	6.64	4.84	3.64	2.80	2.20	1.76	1.43	1.18	0.98	0.83	0.71
DSG 653	10.70	0.60	116.65	67.51	42.51	28.48	20.00	14.58	8.44	6.15	4.62	3.56	2.80	2.24	1.82	1.50	1.25	1.05	0.90
DSG 753	12.07	0.60	179.20	103.70	65.31	43.75	30.73	22.40	12.96	9.45	7.10	5.47	4.30	3.44	2.80	2.31	1.92	1.62	1.38

The information contained in this work has been provided with every effort having been made to ensure accuracy and completeness. However, many of the statements contained in this brochure are of a general nature and no guarantee is given, nor responsibility taken by Acculine for errors or omissions and Acculine does not accept responsibility in respect of any information or advice given in relation to or as a consequence of anything contained herein. Purchasers should seek their own independent advice as to the suitability of the products and materials contained in the brochure for their particular circumstances. As Acculine are committed to ongoing product development, all dimensions, designs, specifications, descriptions, and test results represented in this brochure are subject to change without prior written notice.



**Diamond series®**



58 Barrie Road, (P.O. Box 1415) Tullamarine VIC. 3043

Phone: (03) 9334 5911 Fax: (03) 9335 1078

E: [sales@acculine.com.au](mailto:sales@acculine.com.au)

Website: [www.acculine.com.au](http://www.acculine.com.au)

- SUNSCREENS • VENTILATORS
- LOUVRES • DOOR & WALL PROTECTION PRODUCTS

Distributed by:

