



SYSTEM



BENEFITS



CONSTRUCTION



DESIGN



DETAILS



PROJECTS

Phone: 1300 727 237

[www.afswall.com.au](http://www.afswall.com.au)



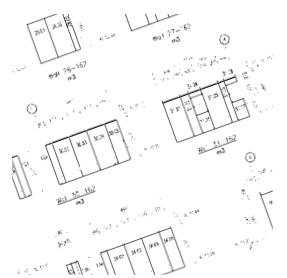
we put you in front

**LOGICWALL<sup>®</sup>**  
STRUCTURAL SOLUTION

"I have used the AFS Wall System and found it to be the most efficient walling system there is on the market today."

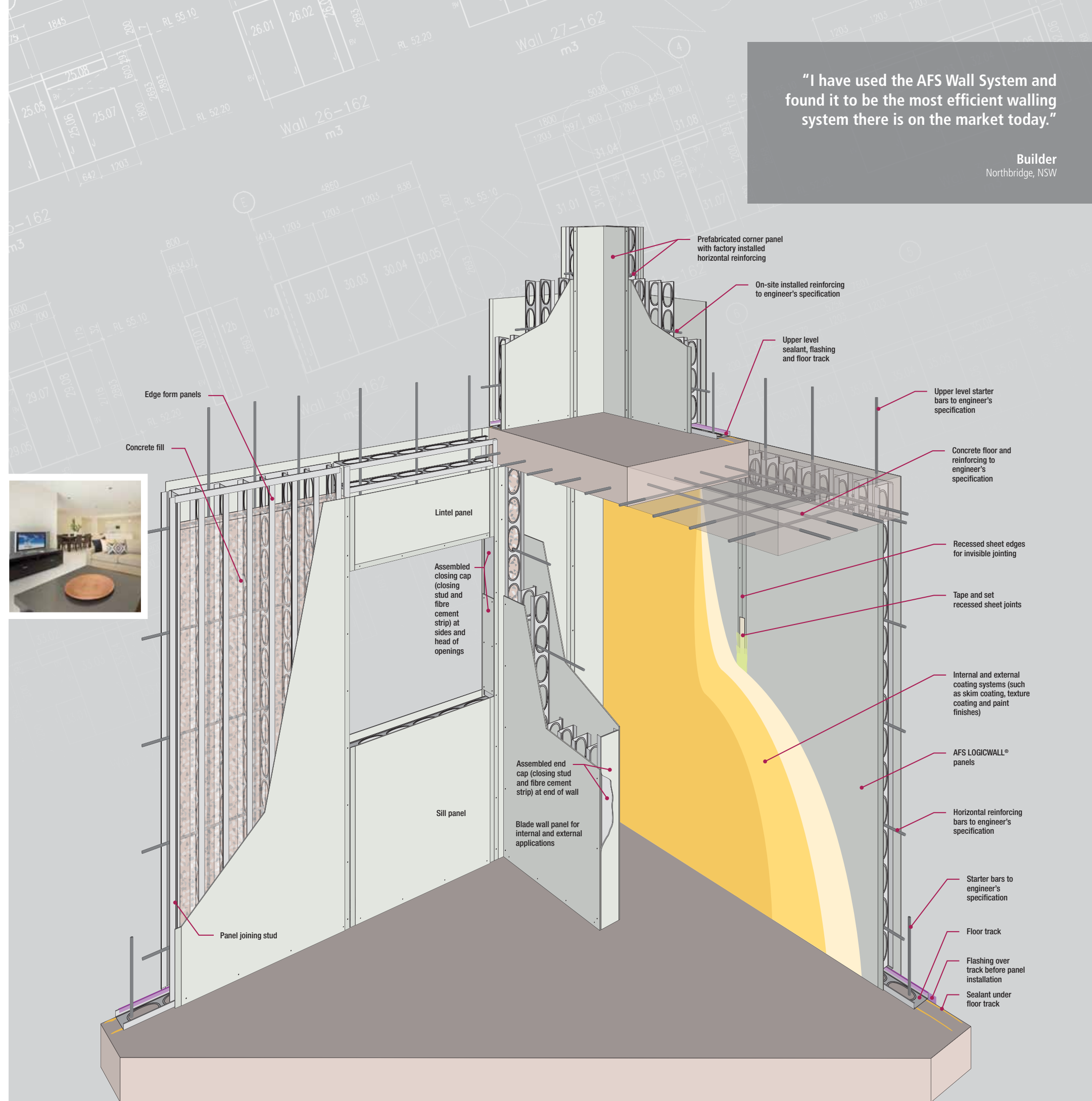
Builder  
Northbridge, NSW

SYSTEM



**AFS LOGICWALL®** is a permanent formwork system for concrete walling for external and internal walls. It consists of lightweight sandwich panels created by bonding hard-wearing fibre cement sheets to galvanised steel stud frames. The panels are quickly and simply hand erected on site and then core-filled with concrete to achieve loadbearing walls that are fire and sound rated. The fibre cement sheeting remains in place as sacrificial formwork, and provides an excellent substrate for applied finishes such as skim coating, acrylic render and paint. The panels can vary in size and thickness to suit a variety of architectural and engineering design requirements. The structural capability of the product when filled with concrete makes it an ideal solution for the construction of buildings such as:

- Multi-unit residential apartments
- Hotels and motels
- Commercial offices
- Shopping centres
- Hospitals
- Prisons





## BENEFITS



" We proved all the benefits which AFS LOGICWALL offers:

- Speed of construction
- Clean & safe worksite with no mess
- Excellent customer service from AFS
- Deliveries on time every time!"

Builder  
Queanbeyan, ACT

### ■ Speed of construction

Up to 100m<sup>2</sup> installed per day by 3 man team

### ■ Efficient handling, not crane dependent

Up to 80% reduction in crange compared to conventional systems

### ■ Shop drawn modular system

Up to 80% less waste than conventional systems

### ■ Structural & load bearing capacity

High structural capacity with reduction in wall foot print

### ■ Quality finish

AFS is backed by leading manufacturers of applied finishes

### ■ Performance compliant

Acoustic and fire rating exceeding BCA requirements

### ■ Delivery guarantee

AFS LOGISTICS – professional, timely deliveries

### ■ Environmentally preferred

The complete AFS LOGICWALL® range is certified by GECA.

### ■ Ease of design & specification

NATSPEC Specification, BIM Tools & Comprehensive Design Manual available from AFS

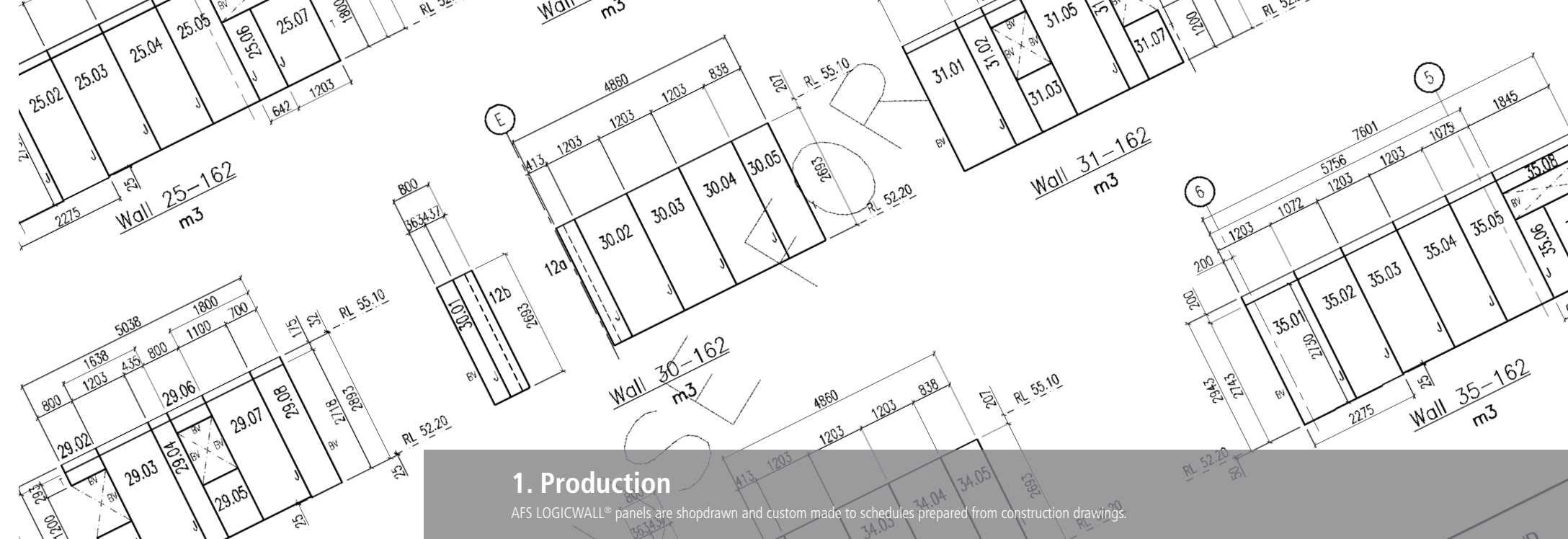


we put you in front

**LOGICWALL**  
STRUCTURAL SOLUTION



CONSTRUCTION



### 1. Production

AFS LOGICWALL® panels are shopdrawn and custom made to schedules prepared from construction drawings.

"Service and delivery from the guys at AFS, whilst from interstate, was always on time, and the quality never varied."

Builder  
St Lucia QLD



### 2. Delivery

AFS LOGICWALL® panels are freighted to site in quantities of up to 500m<sup>2</sup> per truck load. Pallets are then craned onto the floor slab ready for placement.

# 6 STEP CONSTRUCTION PROCESS



### 3. Installation

Following set out, AFS LOGICWALL® panels are hand lifted into place over a steel floor track and starter bars.



CONSTRUCTION



#### 4. Reo & Services

The panels are braced using adjustable braces, then plumbed and straightened. Horizontal and vertical reinforcement steel and electrical services are run in the walls.

“The AFS walls were reinforced according to Australian Standards for both strength and serviceability requirements. This gives the AFS walls the equivalent performance requirements of a conventionally formed concrete wall without the cost and construction time penalties.”

Engineer  
Chermside QLD



#### 5. Core Filling

The panels are then core filled by pumping concrete, usually performed from the formed deck of the next slab or off a scaffold.

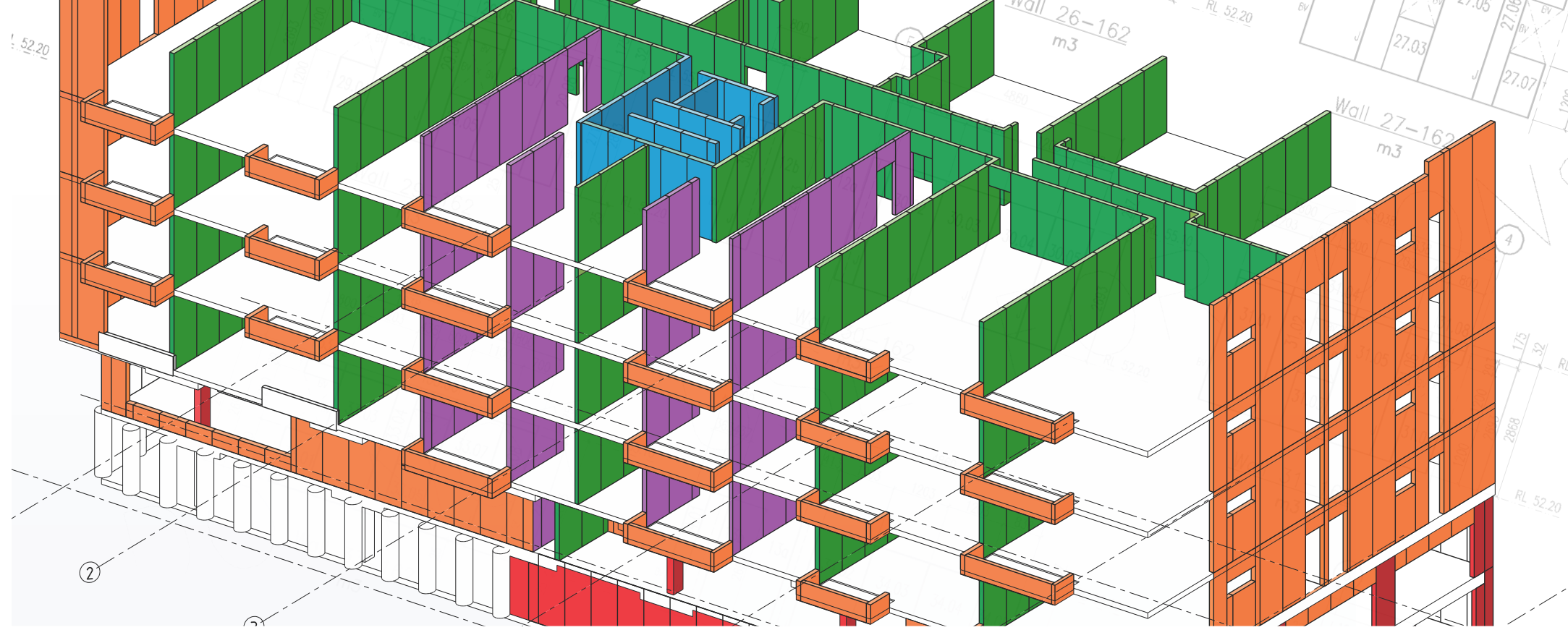
## 6 STEP CONSTRUCTION PROCESS



#### 6. Wall Finishing

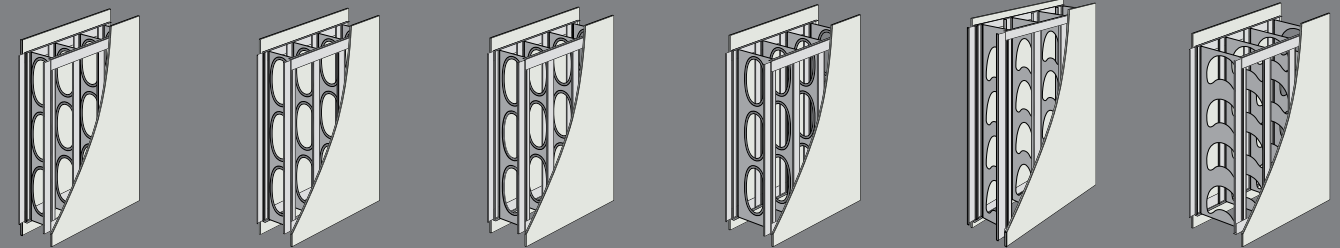
The walls are then ready for the joints to be set and finishes to be applied. Finishes vary for internal and external applications.





"After significant consideration and comparison with other products we decided on AFS because of its slim section that saved critical space on our narrow block, the speed of construction, the simplicity of detailing, and the reduced number of trades required to get the building locked up."

Architect  
Port Macquarie, NSW



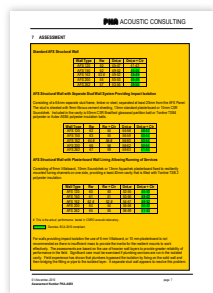
SINGLE REO

DOUBLE REO

DESIGN



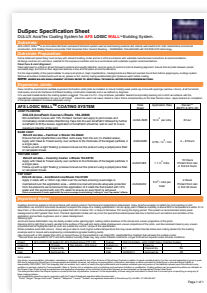
BCA FIRE PERFORMANCE COMPLIANT



BCA ACOUSTIC PERFORMANCE COMPLIANT



LATERAL LOAD RESISTANCE TESTED



DULUX SPECIFICATION & WARRANTY



NATSPEC PRODUCT PARTNER



GECA CERTIFICATE



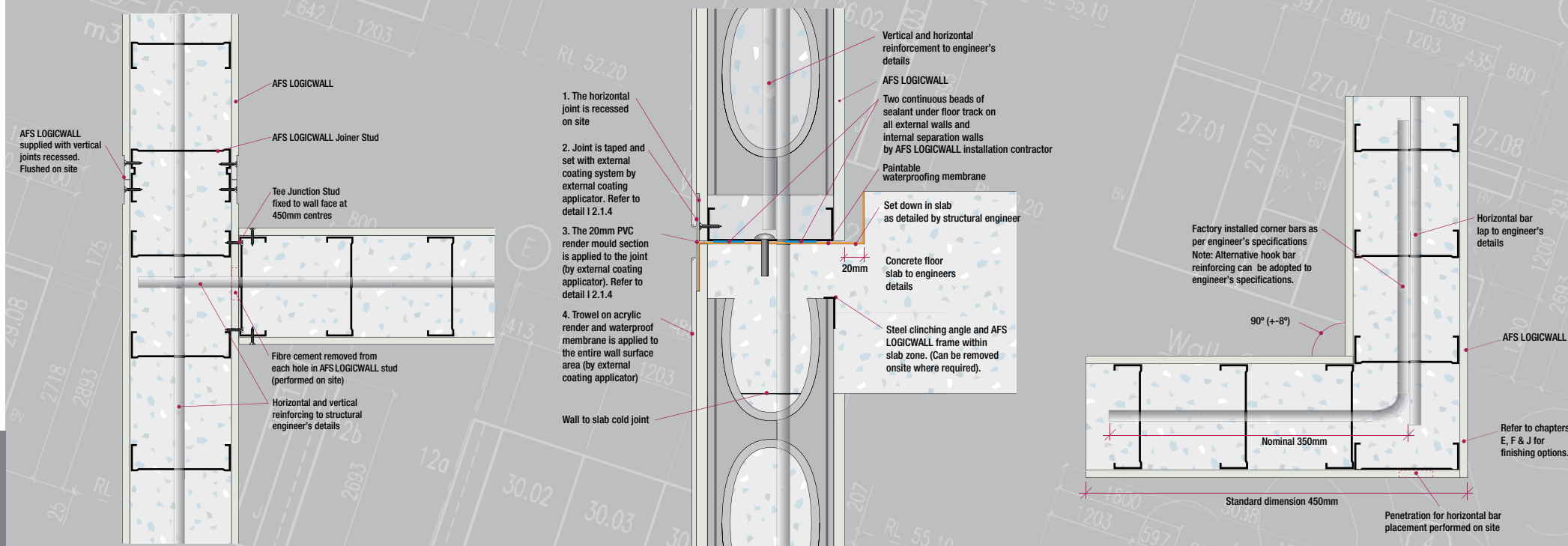
DESIGN MANUALS



BIM TOOLS, REVIT & ARCHICAD

WALL TYPE	AFS120	AFS150	AFS162	AFS200	AFS200D	AFS262
WALL THICKNESS (mm)	120	150	162	200	200	262
TYPICAL APPLICATION	<ul style="list-style-type: none"> <li>External facade</li> <li>Batten/sheet party walls</li> <li>Balustrades</li> </ul>	<ul style="list-style-type: none"> <li>External facade</li> <li>Batten/sheet party walls</li> <li>Blade walls</li> </ul>	<ul style="list-style-type: none"> <li>Stand alone party walls</li> <li>External facade</li> <li>Blade walls</li> </ul>	<ul style="list-style-type: none"> <li>Lift shafts</li> <li>Stair shafts</li> <li>Columns</li> <li>Stand alone party walls</li> </ul>	<ul style="list-style-type: none"> <li>Deep beams</li> <li>Lift and stair shafts</li> <li>Heavily loaded shear walls</li> <li>Blade columns</li> </ul>	<ul style="list-style-type: none"> <li>Lift shafts</li> <li>Stair shafts</li> <li>Shear walls</li> <li>Columns</li> </ul>
ACOUSTIC RATING (RW) (field tests) Dnt, W + Ctr	48 43	52 47	54 50	55 50	55 50	57 52
DESIGN AXIAL STRENGTH (KN/m) Based on 2700 mm high wall $sec < 0.05 * tw$ , $k = 0.75 * Hwu$	820 (32MPa)	1195 (32MPa)	1715 (40MPa)	2290 (40MPa)	2290 (40MPa)	3195 (40MPa)
FILLED WALL MASS (kg/m <sup>2</sup> )	290	360	394	480	480	630
FIRE RESISTANCE LEVEL	240/240/180	240/240/180	240/240/240	240/240/240	240/240/240	240/240/240

DETAILS



AFS LOGICWALL® Tee Junction

Horizontal Expressed Joint with Rebate in Slab Edge

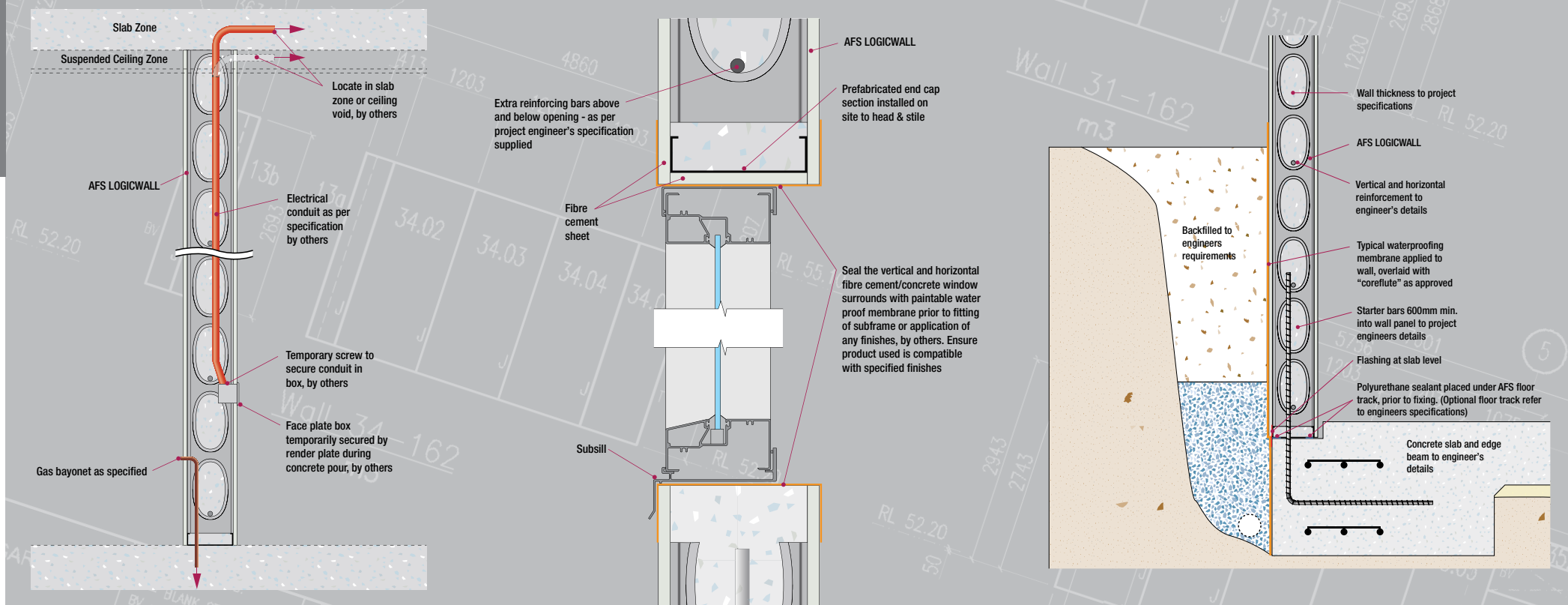
AFS LOGICWALL® Prefabricated Corner

"...the system contributed significantly to the speed of construction, the efficiency of site management and produced a sound and effective structural outcome which achieved our architectural design expectations."

Architect  
Alexandria, NSW

**Disclaimer:** This section of the AFS LOGICWALL® Brochure is intended only by AFS to represent good building practice. This section is not intended in any way by AFS to represent all relevant information required on a project. It is the responsibility of those using AFS LOGICWALL®, including but not limited to builders, designers, consultants and engineers, to verify that AFS LOGICWALL® is suitable for use on a project. All diagram, plans and illustrations used in this section including any reinforcement shown are included for indicative and diagrammatic purposes only. It is the responsibility of those using AFS LOGICWALL® to ensure that reference is made to the structural engineer's details for all diagrammatic and reinforcement requirements.

Refer to the AFS DESIGNER Design & Technical Manual for the complete set of Standard Details



Services

Commercial Window Section

AFS LOGICWALL® Retaining Wall / Basement Wall Slab Junction



PROJECTS



Albert Street, North Parramatta NSW



Aspect Apartments, Northbridge NSW



"I highly recommend the system, and advise all my clients with multi-residential units to use this system."  
Builder  
Northbridge NSW



Oracle Apartments, Belconnen, ACT



Lilyfield Housing, Lilyfield NSW



Rouse Street, Port Melbourne, VIC



# "DESIGN TOOLS FROM AFS TO MAKE YOUR JOB EASY"

## AVAILABLE ONLINE & HARD COPY

Online: Go to [www.afswall.com.au](http://www.afswall.com.au) for log-in details

Hard copy: Phone 1300 727 237 or email [designtoolbox@afswall.com.au](mailto:designtoolbox@afswall.com.au) to request your copy

### DESIGN TOOLBOX CONTENTS:

- AFS DESIGNER
- STANDARD DETAILS
- STANDARD ARCHITECTS SPECIFICATION
- NATSPEC
- ARCHICAD
- REVIT



[www.afswall.com.au](http://www.afswall.com.au)



we put you in front

Distributed by:

**AFS PRODUCTS GROUP** PTY LTD  
Locked Bag 6002, Emu Plains, NSW, 2750  
22-24 Somerville Cct, Emu Plains, NSW, 2750  
Phone: **1300 727 237**  
Email: [sales@afswall.com.au](mailto:sales@afswall.com.au)  
Web: [www.afswall.com.au](http://www.afswall.com.au)

ABN 37 137 916 655

#### IMPORTANT LEGAL INFORMATION

Reasonable efforts have been made to ensure the accuracy of this publication; however, any information and data contained herein is subject to change without notice. To ensure the information you are using is correct, AFS recommends you review the latest technical information available on the AFS website [www.afswall.com.au](http://www.afswall.com.au), or alternatively call 1300 727 237 to speak to a Technical Representative.

The AFS logo and LOGICWALL mark are registered trade marks. © 2012 AFS Products Group Pty Ltd. No part of this publication may be reproduced in any form or by any means without prior written permission from AFS Products Group Pty Ltd. All rights reserved.