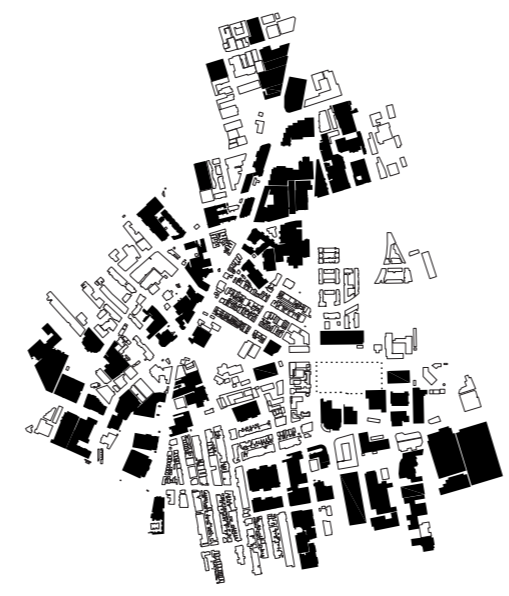


PRE-EUROPEAN WATERSCAPE
The location for Gunyama Park, fully immersed in the waterscape of the Botany Swamp.
(Drawing taken from 1892 Tramway Map, Dept of Lands)



20C INDUSTRIAL ROOF-SPAN MAPPING
Twentieth century South Sydney gained its distinctive constructed geography through the prevalence of large span industrial roofscapes gathered along the original water lines of the Botany Swamp.



POST INDUSTRIAL PERIMETER BLOCK INSERTIONS
This idiosyncratic footprint of large span industrial roofscapes is slowly being erased in the post-industrial era by the consistent application of the perimeter block typology as infill for obsolete industrial sites.

PROJECT CONCEPT

Our Gunyama Park proposal has been developed by ANALYSING the historical geography of the site and IMAGINING the hedonistic potential of the Pool program.

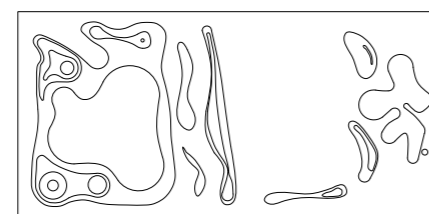
IMMERSION

The site, immersed in a body of water extending across its entire footprint.



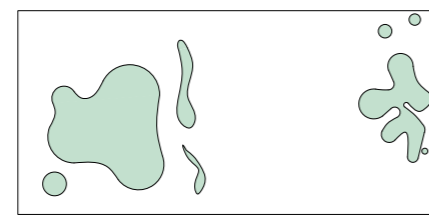
TOPOGRAPHIC INSERTION

A new geography constructed from the topographic insertion of key water-related programs into the site.



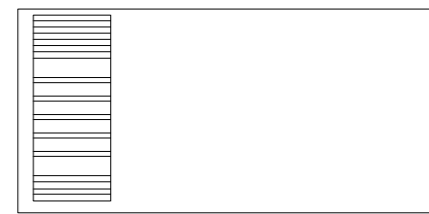
POOLS OF WATER

The newly constructed topography of headlands and valleys captures pools of water across the site.



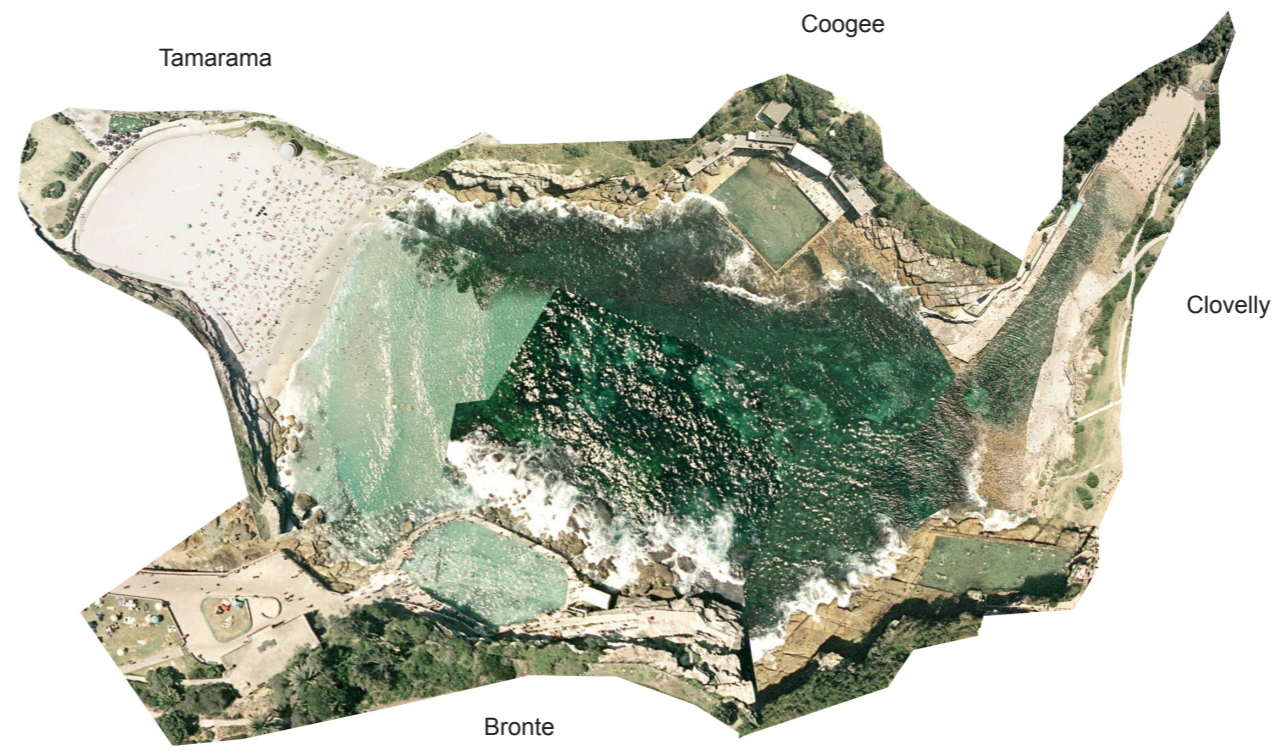
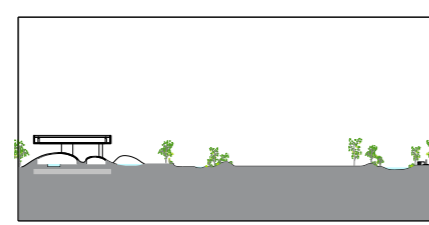
INDUSTRIAL SCALE URBAN TRELLIS

A remnant large span roof is elevated over the new landscape, providing an industrial scale urban shading trellis that houses the large span dry fitness programs.



LANDSCAPE GROUND PLANE

With the wet program below and the dry program above, the park landscape extends across the full footprint of the site.



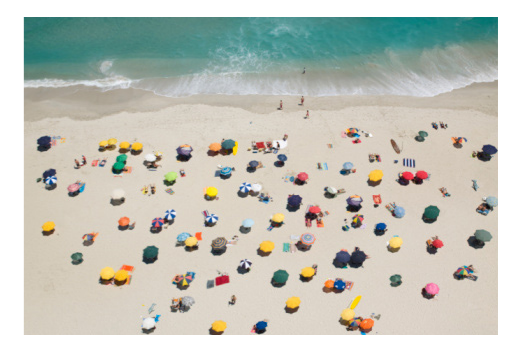
EAST SYDNEY BEACH POOLS COLLAGE

GUNYAMA BEACH

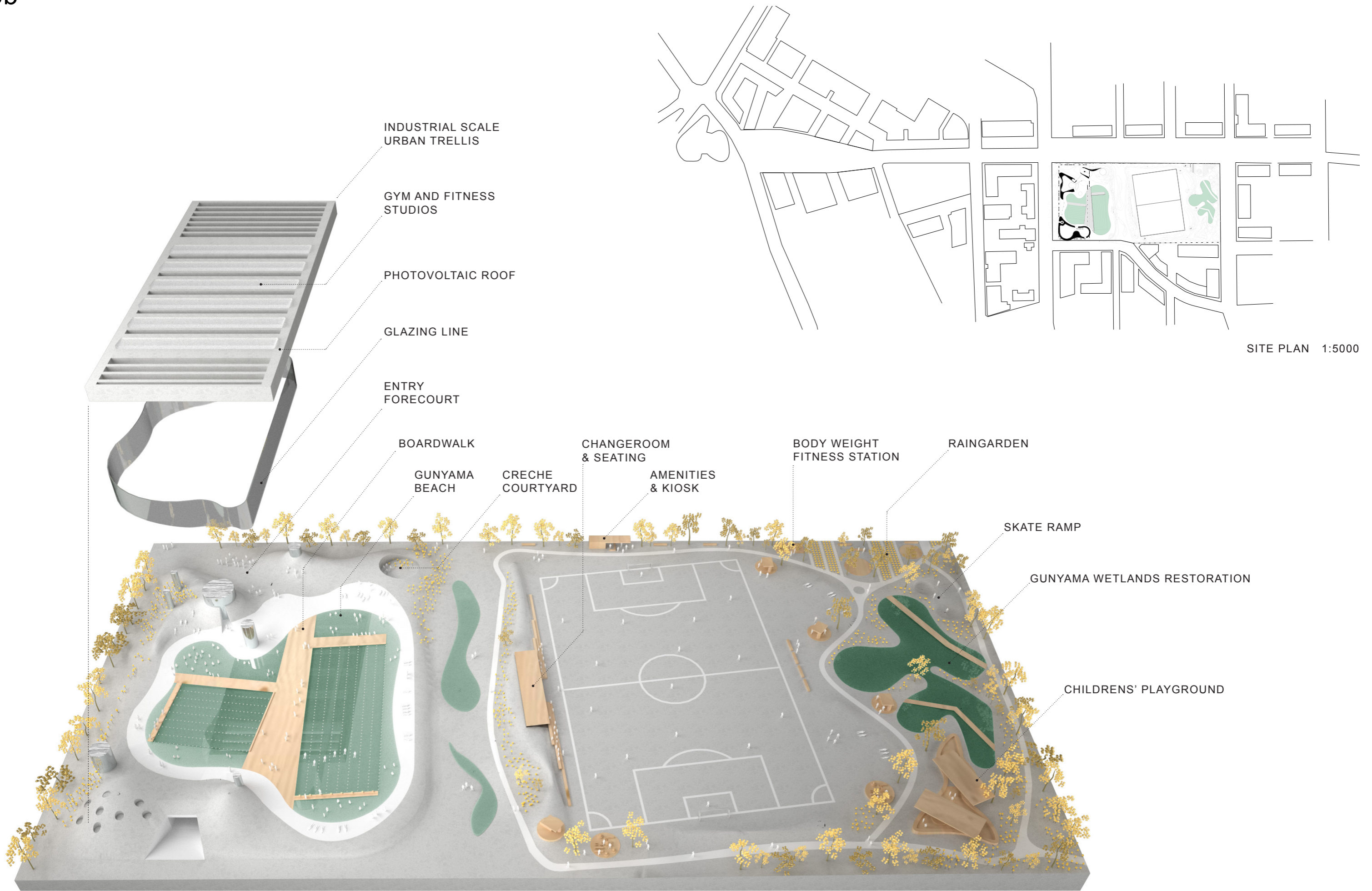
Very few indoor pools have been able to offer the PLEASURES OF SWIMMING that can match the primacy and hedonistic experience of swimming in Sydney's beach and harbour pools. Inspired by our collage of Sydney beach pools, our proposal establishes a playful interaction of natural and constructed landscapes that GRAFTS THE BEACH into the urban pool experience.



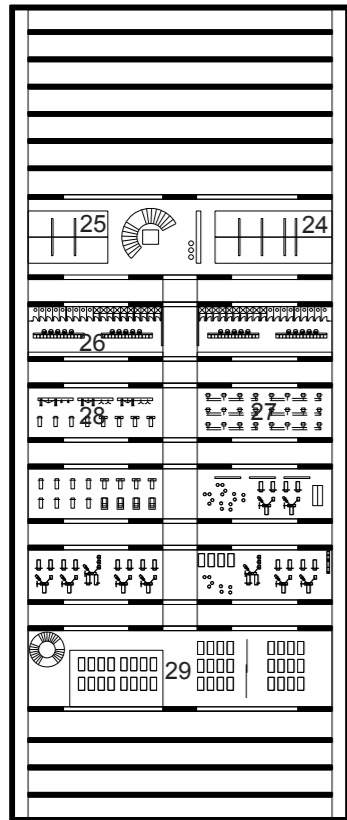
Free-form pool entry point



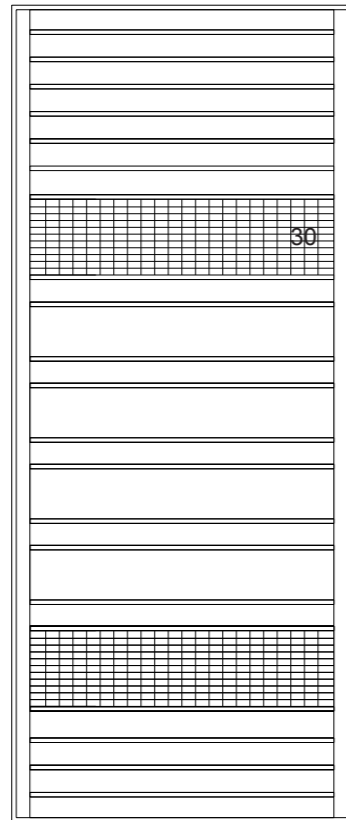
Beach / water threshold



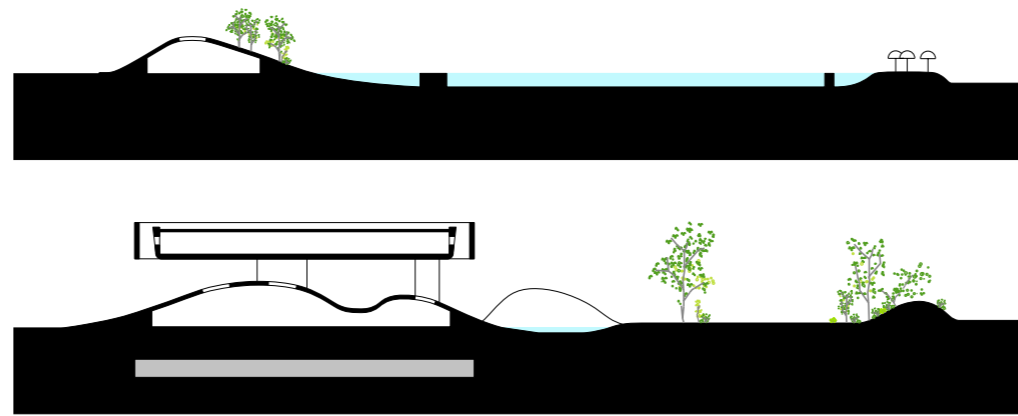
SITE MODEL



FLOOR PLAN

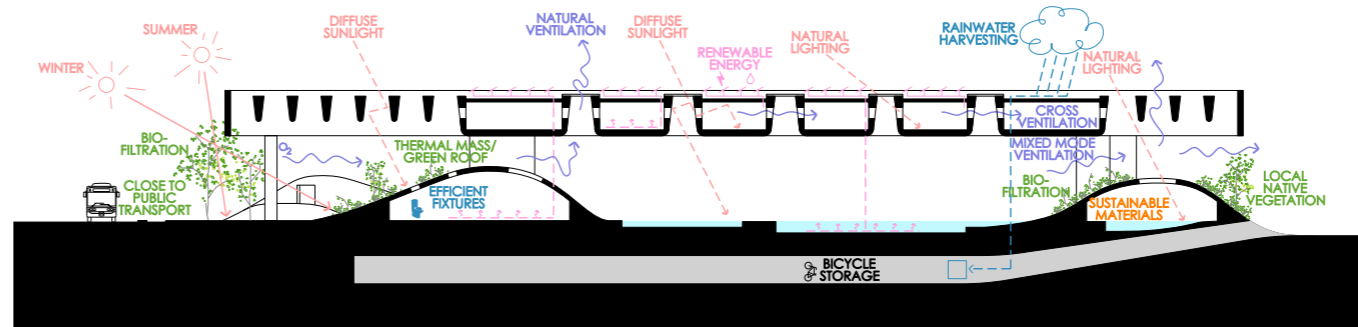


ROOF WITH PHOTO VOLTAICS

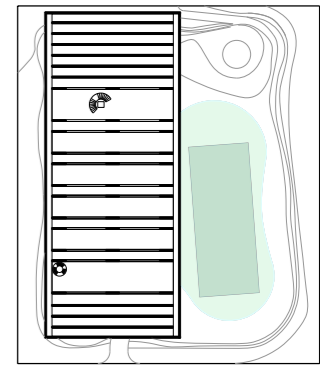


LONG SECTION
1:1000

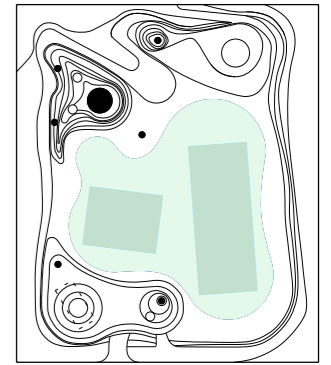
SHORT SECTION
1:1000



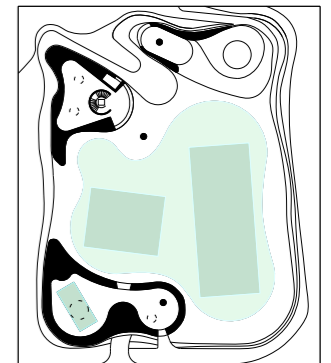
SUSTAINABILITY CONCEPTS



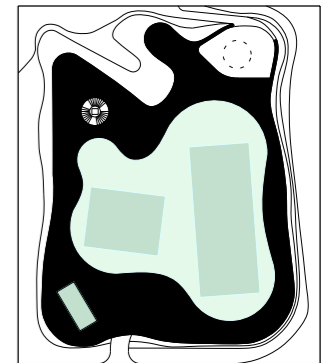
ROOF & DRY PROGRAM



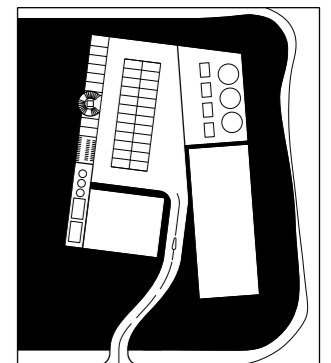
GROUND PLANE



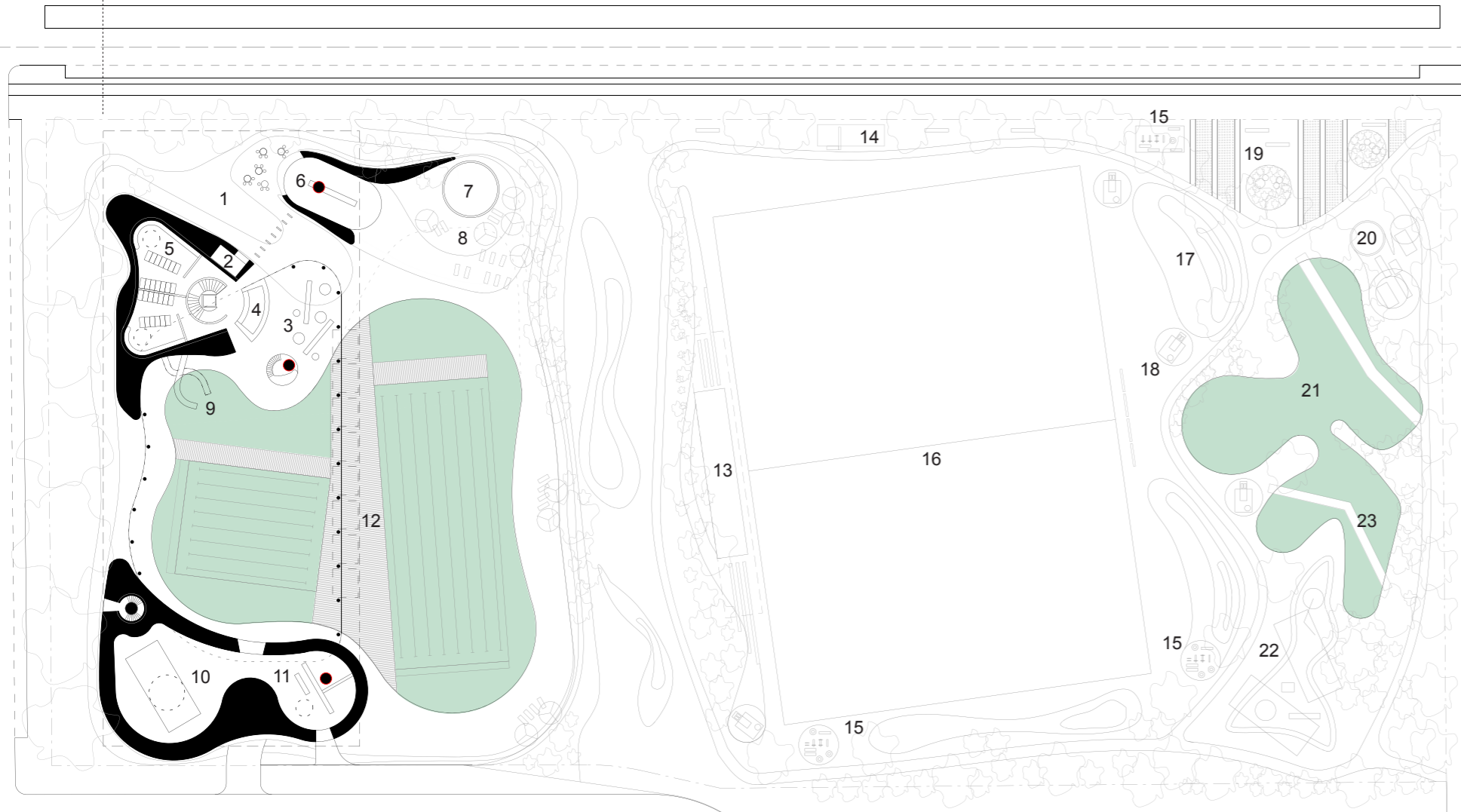
POOL & WET PROGRAM



STREET & CRECHE

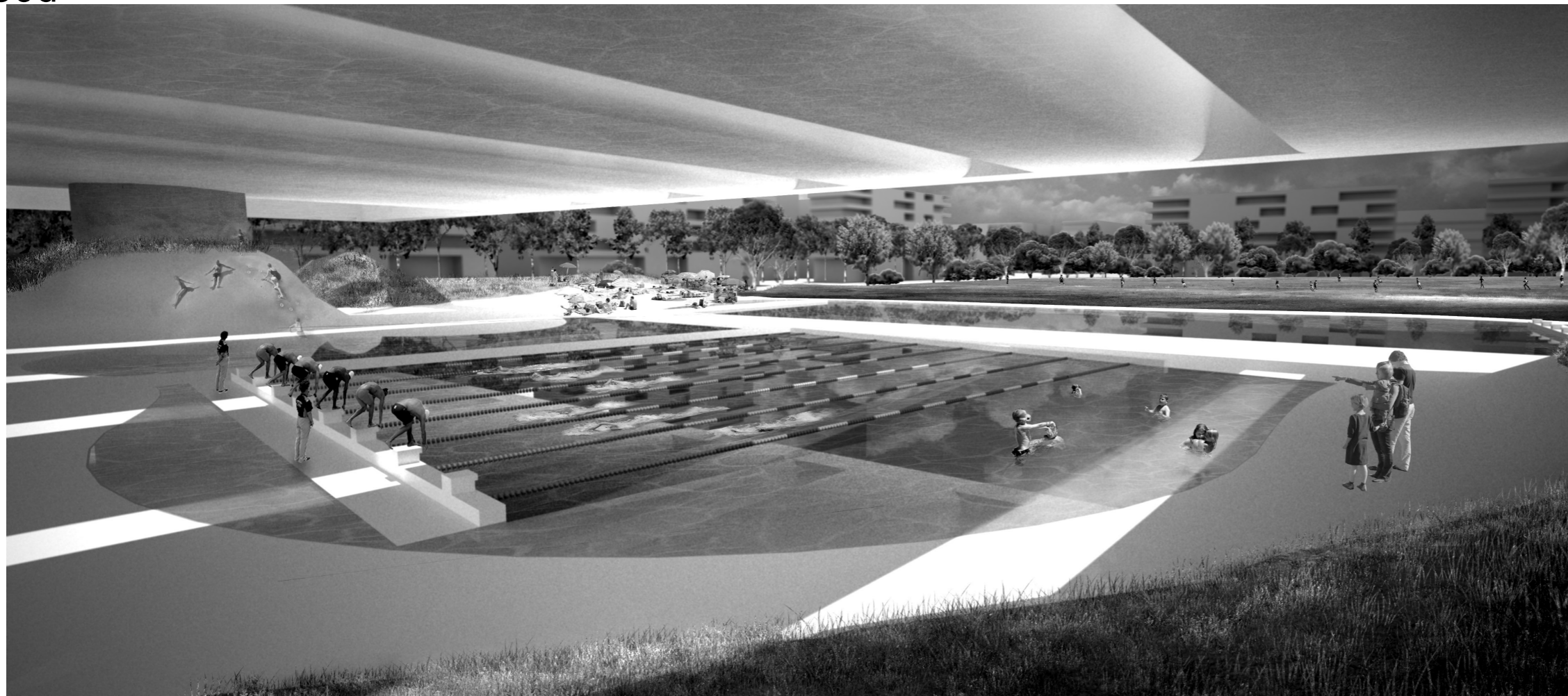


PARKING & PLANT

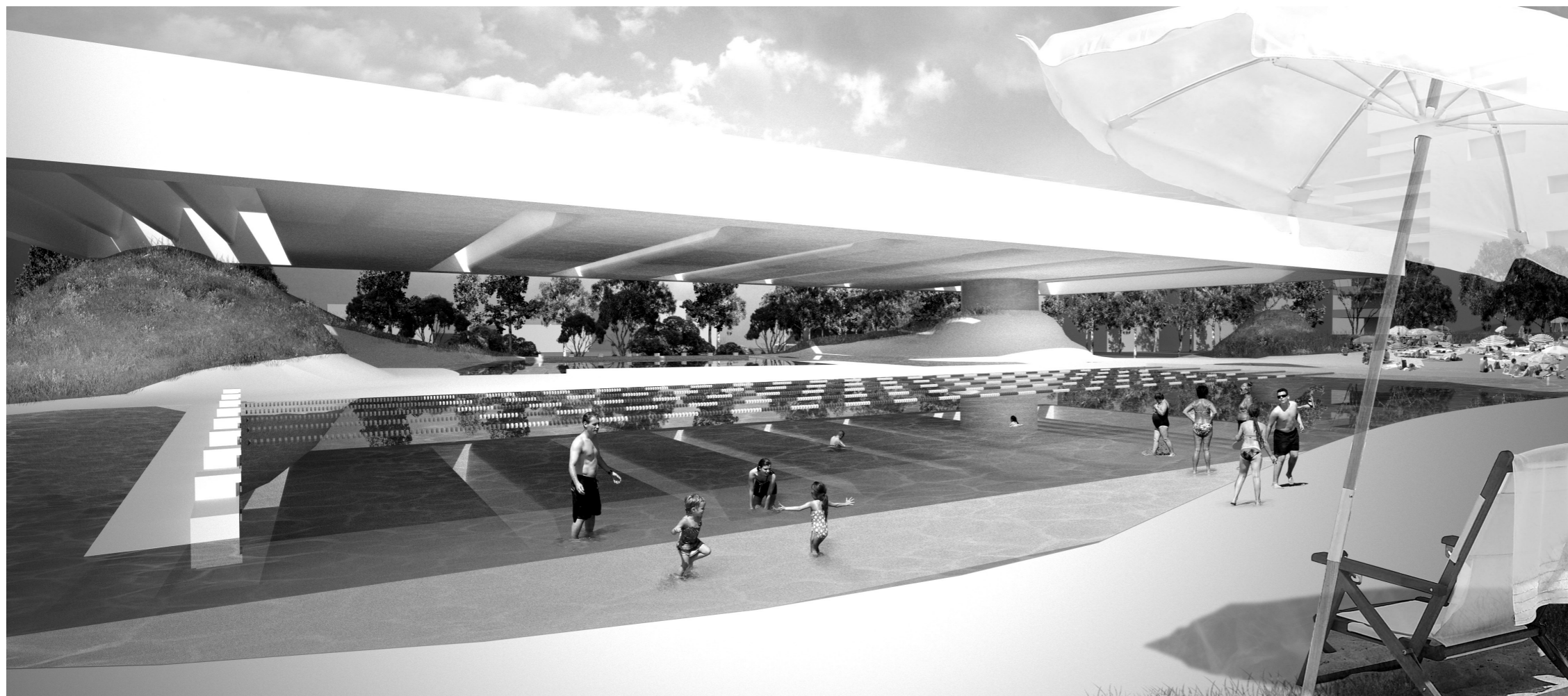


PLAN 1:1000

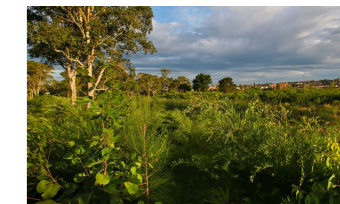
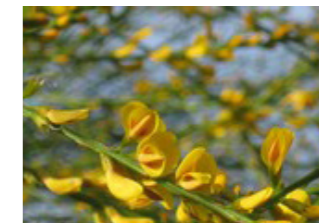
1. FORECOURT
2. TICKETING
3. FOYER & KIOSK
4. RECEPTION
5. WET CHANGE ROOMS
6. CAFÉ
7. CRECHE COURTYARD
8. GUNYAMA BEACH
9. KIDS PLAY & FREE-FORM POOL
10. HYDROTHERAPY POOL
11. HYDROTHERAPY CHANGE ROOMS & RECEPTION
12. POOL BOARDWALK
13. CHANGE ROOMS & SPECTATOR SEATING
14. AMENITIES AND CAFÉ
15. BODYWEIGHT FITNESS STATION
16. MULTIPURPOSE FIELD
17. SPECTATOR LAWN AND PICNIC AREA
18. BBQ STATION
19. RAIN GARDEN
20. SKATE PARK
21. WETLAND RESTORATION
22. CHILDREN'S PLAYSACE
23. WETLAND BOARDWALK
24. STAFF ADMIN & AMENITIES
25. FITNESS OFFICES
26. DRY CHANGE ROOMS
27. SPIN
28. CARDIO & WEIGHTS
29. FITNESS ROOMS
30. PHOTOVOLTAIC ROOF



PERSPECTIVE LOOKING EAST THROUGH THE POOLS TO GUNYAMA PARK

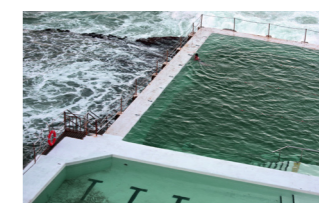
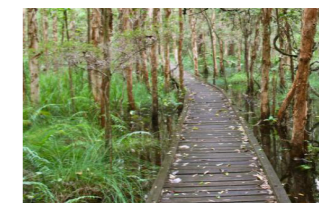


PERSPECTIVE LOOKING NORTH-WEST THROUGH TO JOYNTON AVENUE



GUNYAMA WETLANDS

In addition to the recreational landscape requirements of the park our landscape proposal links Gunyama park into the wetland and native vegetation restoration projects (Centennial Park, Eastlakes Golf Course) of the Botany Basin sand bed landscapes of the original Waterloo Swamp. The introduction of a second major water element within the park establishes a wetland flora and fauna habitat including banksia scrub, paperbark, coastal tea-tree, gymea lily, native broom, water hens, ducks, spoonbills and the threatened green and golden bell frog.



THE BOARDWALK

Linking the Park and Pool waterscapes is a common circulation strategy – BOARDWALKS used to circulate through the pool and wetland landscape. The boardwalk within the wetlands provides shortcuts in the park circulation while giving greater access and familiarity between the community and the wetland habitats. The board walk within the Aquatic Centre provides functional circulation and organisation of the individual pools while maintaining the quality of being surrounded by one large, freeform pool of water.