

aquablend thermostatic mixing valves

SUPERIOR SCALD PROTECTION

AUSTRALIAN MADE

LOWER WHOLE OF LIFE COST



 **AQUABLEND**

WWW.ENWARE.COM.AU

Aquablend – the safest way to mix water to a preset temperature

AQUABLEND HIGH-PERFORMANCE THERMOSTATIC MIXING VALVES ARE THE ONLY TMVS DESIGNED AND MANUFACTURED IN AUSTRALIA AND ARE SUPPORTED BY MORE THAN SEVEN DECADES OF ENWARE'S EXPERIENCE AND EXPERTISE.

MEETING AUSTRALIAN LEGISLATION: LEADING THE WORLDS QUALITY STANDARDS

Enware has long believed that absolute quality is crucial to reliable performance and safety. That's why our Aquablend Thermostatic Mixing Valves are Standards marked to AS/NZS4032.1. They also deliver the world's highest standards of quality and durability to allow for AS/NZS3500 compliance.

The healthcare preferred models - Aquablend 1500 range and Aquablend 2000, have NSW Health Approval for use in public and private healthcare facilities.

In hospitals, hotels, aged care facilities, homes and commercial applications, where stable-temperature warm water is required, Aquablend safely delivers to plus or minus 2° Celsius – even under changing temperature and pressure conditions. So safety from scalding or shock is ensured by Aquablend's thermal shut-off capability in the event of either cold or hot water supply failure.

For showers, baths, basins and sinks – especially where there are young children, elderly or disabled people – Aquablend protects against scald injuries and provides superior temperature stability for warm water delivery.

For optimum performance and reliability Aquablend TMVs are required to be maintained in accordance with the manufacturer's recommendations as stated in the Manual for Installation, Commissioning and Maintenance provided with each valve.



CERTIFICATION



WaterMark
AS/NZS 4032.1 Lic1593
SAI Global

Aquablend TMVs are made in Australia and WaterMark approved to AS/NZS4032.1 for installations in compliance with AS3500. Aquablend 1500 and 2000 models are also NSW Health Approved.

AQUABLEND



Performance and Technical Support Guaranteed

AQUABLEND THERMOSTATIC MIXING VALVES ARE SAFE, SIMPLE AND EASY TO MAINTAIN – AND PROVIDE MANY FEATURES THAT NOT ONLY MATCH BUT EXCEED INDUSTRY STANDARDS. SOME OF THEIR PROVEN BENEFITS INCLUDE:

TEMPERATURE STABILITY

Superior temperature stability where variations in water supply temperatures and pressures occur.

AMBIENT START UP CONTROL

Superior ability to control temperature spikes at ambient start up.

THERMAL SHUTDOWN

The Aquablend TMVs shut down in the event of either Cold water or Hot water supply failure. The valve quickly reinstates flow when normal supply resumes.

CONSTANT MIX CONTROL

Water temperature is maintained at plus or minus 2 degrees, even during water temperature or pressure fluctuations.

PERFORMANCE AT LOW PRESSURE AND REDUCED FLOW RATES

Aquablend is able to supply stable temperature water in both low pressure systems and reduced flow rate systems operating with a minimum working pressure of 20Kpa and flow rates as low as 2 L/min.

SUPPLIED COMPLETE

Each unit comes complete with combination isolating ball valve, non-return and dual-stage strainer assemblies which incorporate water pressure/temperature test ports.

INSTALLATION VERSATILITY

Each TMV can be installed in any configuration with the water outlet in the horizontal or vertical (up or down) position, and inlet connections can be rotated to suit inlet pipework.

EASY MAINTENANCE

The compact component assembly design allows low-cost, in-situ servicing and ensures minimum down-time. Flat faced connections allow removal of the valve without disturbing the pipework.

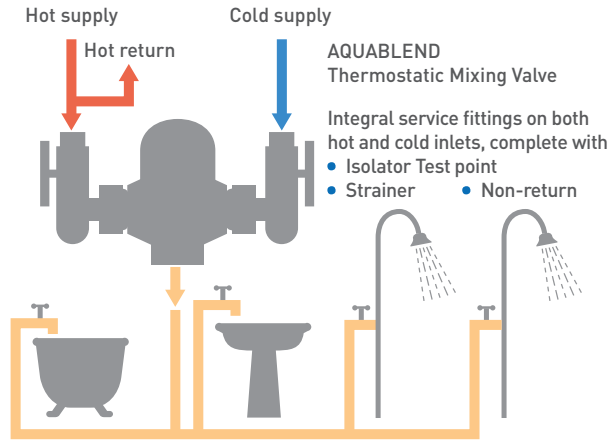
TECHNICAL SUPPORT

Each TMV is supplied with a detailed technical manual to facilitate valve sizing, installation, commissioning, maintenance and troubleshooting. By choosing Aquablend TMVs, you are choosing the industry's acknowledged leader in technical support.



multiple outlet operaton

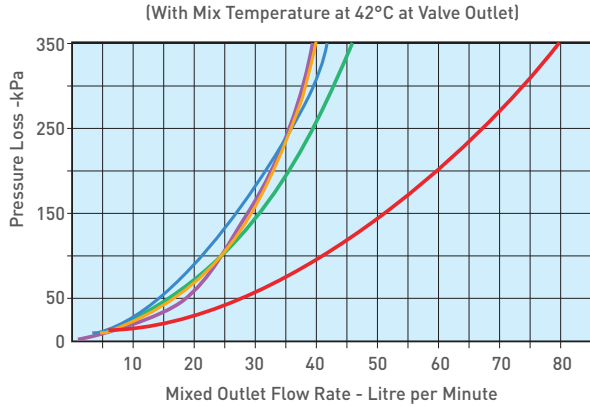
A single Aquablend Thermostatic Mixing Valve can cater for more than one shower, wash basin and bath. Diagram shows schematic of typical healthcare application.



38°C - 45°C to Hospital ensuite (43.5°C max. in NSW HEALTH)
Refer to local regulations for design requirements

THE VERSATILE AQUABLEND RANGE – HIGHEST STANDARDS, EXCEPTIONAL PERFORMANCE.

Flow Characteristics of Aquablend 1000, 1500, 2000, 2500 with Inlet Fittings



■ TMV 1000 ■ TMV 1500 ■ TMV 1500 SOLAR ■ TMV 2000 ■ TMV 2500

OPTIMUM TEMPERATURE STABILITY

AQUABLEND MODELS	1000, 1500, 2000, 2500	1500 SOLAR
Minimum temperature differential (hot supply to mixed water outlet temperature)	10°C	10°C
Hot temperature range at inlet	55° to 90°C	55° to 99°C Note: Supply must not be steam

For optimum temperature stability it is recommended that the inlet pressures be balanced to within +/- 10%

AQUABLEND

CALL 1300 369 273 OR VISIT WWW.ENWARE.COM.AU/AQUABLEND

AQUABLEND TMV RANGE

AQUABLEND 1000



AQUABLEND 1500



AQUABLEND 1500 SOLAR



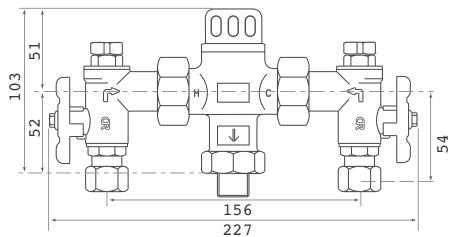
AQUABLEND 2000



AQUABLEND 2500



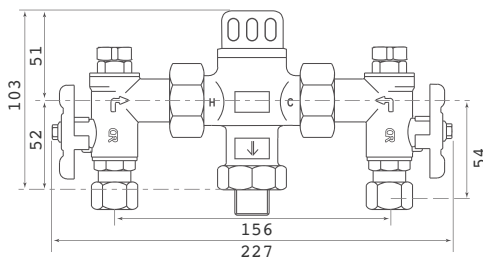
TECHNICAL INFORMATION



Temperature Adjustment Range: 38° to 50°C
Dynamic Inlet Pressures: 20kPa Min – 500kPa Max
Static Inlet Pressure: 1600kPa Max
Flow Rates: 39 lpm@300kPa pressure loss
Minimum Flow Rate for stable outlet temperature: 2 litres/min (4 lpm is recommended for optimum performance)
Pressure Loss Ratio – 5:1 either supply

Order Code:
ATM710

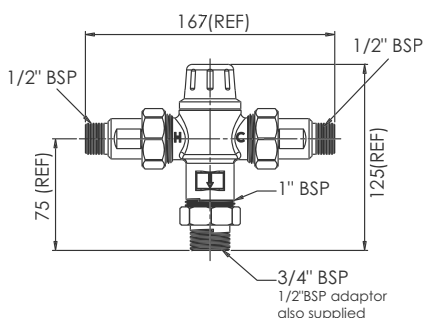
Inlet size: 1/2" compression nuts
Outlet size: 1" complete with 1"x1/2" & 1"x 3/4" BSP adaptors
Finish: Nickel plated
Exposed Box code: ATMS710E
Recessed Box code: ATMS710R
Wall Bracket code: ATM728
Access Panel for Box: ATMS215
O-ring Service Kit code: ATMS1403
Thermostatic Element/Shuttle Assembly (5 year service) code: ATMS1400



Temperature Adjustment Range: 35° to 48°C
Dynamic Inlet Pressures: 20kPa Min – 500kPa Max
Static Inlet Pressure: 1000kPa Max
Flow Rates: 42 lpm@300kPa pressure loss
Minimum Flow Rate for stable outlet temperature: 2 litres/min (4 lpm is recommended for optimum performance)
Pressure Loss Ratio – 10:1 either supply

Order Code:
ATM700

Inlet size: 1/2" compression nuts
Outlet size: 1" complete with 1"x1/2" & 1"x 3/4" BSP adaptors
Finish: Nickel plated
Exposed Box code: ATMS700E
Recessed Box code: ATMS700R
Wall Bracket code: ATM728
Access Panel for Box: ATMS215
O-ring Service Kit code: ATMS4714
Thermostatic Element/Shuttle Assembly (5 year service) code: ATMS4715

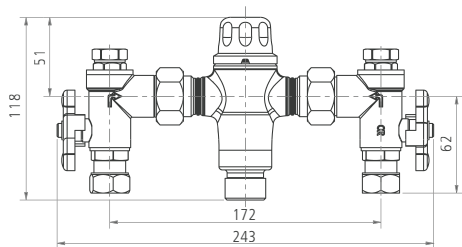


Temperature Adjustment Range: 38° to 50°C
Dynamic Inlet Pressures: 20kPa Min – 500kPa Max
Static Inlet Pressure: 1600kPa Max
Flow Rates: 39 lpm@300kPa pressure loss
Minimum Flow Rate for stable outlet temperature: 2 litres/min (4 lpm is recommended for optimum performance)
Pressure Loss Ratio – 10:1 either supply

Order Code:
ATM715

Inlet size: 1/2" compression nuts
Outlet size: 1" complete with 1"x1/2" & 1"x3/4" BSP adaptors
Finish: Nickel plated valve body only
For stainless steel box options contact your Enware representative.
Wall Bracket code: ATMS728

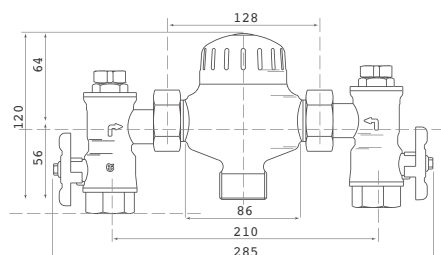
Isolation valves not included on 1500 Solar TMV, Refer to AS/NZS3500.4 for installation requirements.



Temperature Adjustment Range: 38° to 50°C
Dynamic Inlet Pressures: 20kPa Min – 500kPa Max
Static Inlet Pressure: 1600kPa Max
Flow Rates: 38 lpm@300kPa pressure loss
Minimum Flow Rate for stable outlet temperature: 2 litres/min (4 lpm is recommended for optimum performance)
Pressure Loss Ratio – 10:1 either supply

Order Code:
ATM711 (Male)
ATM713 (Female)

Inlet size: 1/2" MI comp (ATM711) or 3/4" FI (ATM713)
Outlet size: 3/4" BSP MI
Finish: Polished and Chrome plated
Exposed Box code: ATMS216E
Recessed Box code: ATMS216R
Wall Bracket code: ATMS214
Access Panel for Box: ATMS215
O-ring Service Kit code: ATMS230 (5 year service)
Thermostatic Element/Shuttle Assembly (5 year service) code: ATMS231



Temperature Adjustment Range: 35° to 50°C
Dynamic Inlet Pressures: 10kPa Min – 500kPa Max
Static Inlet Pressure: 1000kPa Max
Flow Rates: 75 litres/minute@300kPa pressure loss
Minimum Flow Rate for stable outlet temperature: 6 litres/min
Pressure Loss Ratio – 5:1 either supply

Order Code:
ATM725

Inlet size: 3/4" BSP FI
Outlet size: 1" BSP MI
Finish: Polished and Chrome plated
Exposed Box code: ATMS727E
Recessed Box code: ATMS727R
Wall Bracket code: ATMS714
Access Panel for Box: ATMS215
O-ring Service Kit code: ATMS301
Thermostatic Element/Shuttle Assembly (5 year service) code: ATMS306

SIMPLE TO INSTALL AND MAINTAIN

Aquablend stainless steel enclosure options make accessing and servicing easy, with practical features such as:

- Anti-tamper lockable box with brushed stainless steel cover plate
- Adjustable fascia cover to allow adjustment for wall type covering
- Compact design dimensions to fit into stud work
- Oversized fascia provides flange for recess mounting
- Supplied complete with valve, fully plumbed
- Durable stainless steel construction
- Stainless steel bracket to support valve
- Easy access and servicing in-situ
- Complete with test point on outlet

AQUABLEND TMV STAINLESS STEEL CONTROL BOXES

To ensure easy access at all times, Aquablend TMVs have removable doors so installation in confined spaces or close to walls creates no problems.

3-HOLE



LOCKABLE COVERS



4-HOLE WITH COLD WATER BYPASS



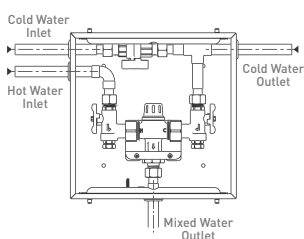
Also available:

Stainless Steel Access Panel 350mm x 350mm with anti-tamper screws - **ATMS215**.

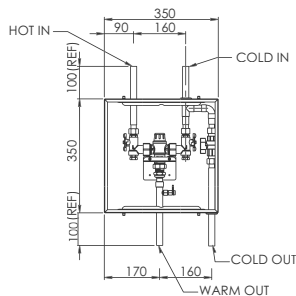
Hinged door options.

SPECIALISED CONFIGURATIONS

Developed with key engineering and hydraulic consultant partnerships, control boxes which include Cold Water By-Pass and a Hot & Cold Water By-Pass system are available. Please consult our technical staff for specialised configurations.



ATMS2009R – 1000 Model
ATMS2008R – 1500 Model



ATMS718R – 1500 model

AQUABLEND 1000



AQUABLEND 1500



AQUABLEND 1500 SOLAR



AQUABLEND 2000



AQUABLEND 2500

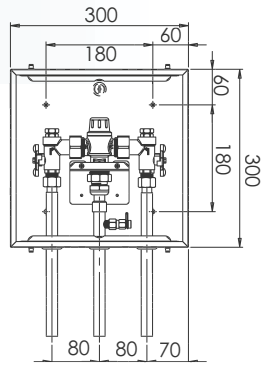


BOXES

AQUABLEND 1000 STAINLESS STEEL BOX

Order Code:

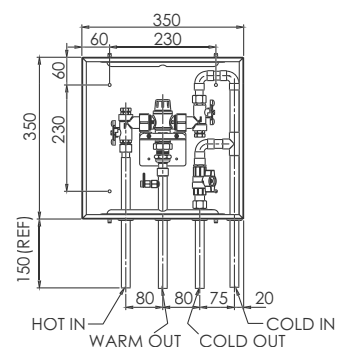
- ATMS710E – Exposed
- ATMS710R – Recessed
- ATMS710H – Recessed with hinged door



AQUABLEND 1000 STAINLESS STEEL BOX WITH COLD WATER BY-PASS (4 HOLE)

Order Code:

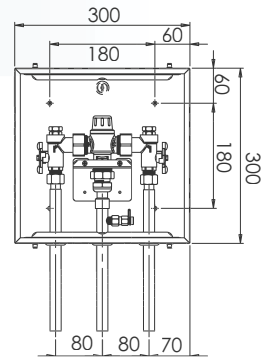
- ATMS119R – Recessed
- ATMS119E – Exposed
- ATMS119H – Recessed with hinged door



AQUABLEND 1500 STAINLESS STEEL BOX

Order Code:

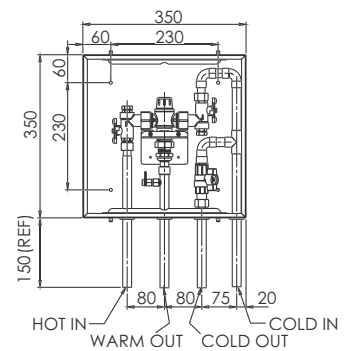
- ATMS700E – Exposed
- ATMS700R – Recessed
- ATMS700H – Recessed with hinged door
- ATMS700S – Recessed with security screw lid



AQUABLEND 1500 STAINLESS STEEL BOX WITH COLD WATER BY-PASS (4 HOLE)

Order Code:

- ATMS719R – Recessed
- ATMS719E – Exposed
- ATMS719H – Recessed with hinged door



AQUABLEND SOLAR STAINLESS STEEL BOX

Custom boxes available.
Please contact your Enware representative.

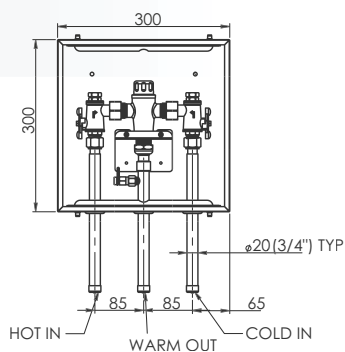
NEW SOLAR TMV



AQUABLEND 2000 STAINLESS STEEL BOX

Order Code:

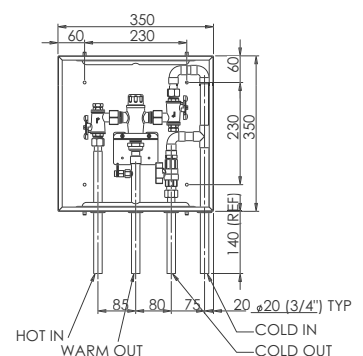
- ATMS216E – Exposed
- ATMS216R – Recessed
- ATMS216H – Recessed with hinged door
- ATMS216S – Recessed with security screw lid



AQUABLEND 2000 STAINLESS STEEL BOX WITH COLD WATER BY-PASS (4 HOLE)

Order Code:

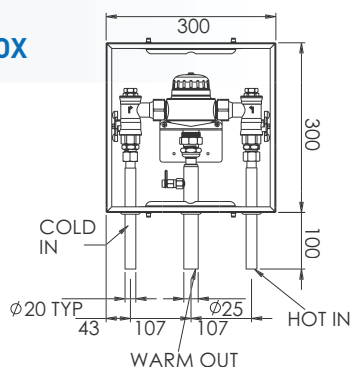
- ATMS219R – Recessed
- ATMS219E – Exposed
- ATMS219H – Recessed with hinged door



AQUABLEND 2500 STAINLESS STEEL BOX

Order Code:

- ATMS727E – Exposed
- ATMS727R – Recessed



**AUSTRALIAN MADE
THERMOSTATIC MIXING VALVES**

AQUABLEND

CALL 1300 369 273 OR VISIT WWW.ENWARE.COM.AU/AQUABLEND

HANDY TMV TEST KIT

A practical Thermostatic Mixing Valve Test Kit is now available. The kit comprises of a Digital Thermometer with hand-held Immersion Probe, Pressure Gauge with a spike adapter, a Flow Cup - and comes complete in a compact carry case with protective contoured foam.

Order Code:

ATMS1200 – Complete test kit

ATMS1201 – Flow cup only



THE ENWARE SMART FLOW® TMV MONITORING SYSTEM PROVIDES ALL THE INFORMATION YOU NEED, RIGHT AT YOUR FINGER TIPS

Enware Australia's Smart Flow® TMV Monitoring System provides a unique risk management tool for the performance and maintenance of Thermostatic Mixing Valves (TMVs). The networked system constantly monitors the whole system electronically, via a calibrated temperature probe installed into the TMV. It provides engineering personnel with a constant temperature readout and performance status report of all TMVs throughout the facility.

Acknowledging the need by government authorities for the provision of safe guards for patients and carers prompted the development of the Smart Flow® system. It also directly addresses the NSW Department of Health requirement for monthly temperature readings - alleviating this time consuming job and allowing plumbing maintenance staff to focus on more productive activities.

THE SMART FLOW® TMV MONITORING SYSTEM IS IDEAL FOR NEW INSTALLATIONS AND MAY ALSO BE RETROFITTED TO EXISTING HOSPITALS OR AGED CARE FACILITIES.

FOR MORE INFORMATION ABOUT SMART FLOW® AND HOW IT CAN INTEGRATE INTO YOUR FACILITY, PLEASE CONTACT ENWARE ON 1300 369 273.



THE PC BASED PROGRAM PROVIDES THE USER WITH MANY FEATURES INCLUDING:

- Constant temperature reading, 24 hours a day
- Alert status audio/visual alarm in the event of a valve operating over temperature
- Automatic logging of TMV history, including individual alert logs
- Interactive password protected maintenance database, which generates reports when annual servicing is due
- Statistical reports providing performance assessment, helps determine level of servicing required for each TMV
- Logs all readings for historical reference, which is third party NATA certified in the event of patient/visitor liability claims
- Full reporting program tailored to the engineering staff requirements

ENWARE IN BRIEF

Enware is a world-leading Australian designer and manufacturer of quality specialist commercial tapware solutions and safety systems.

Since inception in 1937, Enware Australia has grown significantly. Today, Enware has offices located around the country and is represented in major regions throughout the world including Asia, the Pacific, the Middle East and Europe. As a global leader of specialist tapware and safety systems, Enware offers a more extensive range than any other company on the market.

**SPECIALIST
PLUMBING SOLUTIONS**

**ADAPTABLE WORK
& LIVING SOLUTIONS**

**HEALTH, SAFETY
& ENVIRONMENTAL**

**STAINLESS STEEL
WASHROOM SYSTEMS**



ADDRESS: 9 Endeavour Road, Caringbah NSW 2229 Australia

POSTAL ADDRESS: P.O. Box 2545, Taren Point NSW 2229 Australia

PHONE: 61 2 9525 9511

FAX: 61 2 9525 9536

1300 369 273 (AUS) WWW.ENWARE.COM.AU INFO@ENWARE.COM.AU

