

IMPORTANT COPY PROOF

Read this layout proof carefully. It is your guarantee of accuracy. Infolink does not accept responsibility for material once it has been approved by you for publication.

Please check the copy and return immediately by email, or contact Tracy Engle on (02) 9422 2707

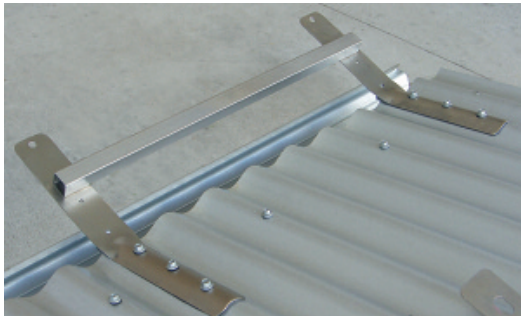
Approved for Publication by _____

Date / /11

Email: tracy.engle@reedbusiness.com.au

81AX – Card Enquiry

Roof Anchors – It’s All About Staying On Top



SECURE Anchor Systems has one priority in manufacturing and developing roof anchors – to assist building designers and workers implement height safety with a minimum of fuss and as easily as possible.

Low profiles, clean lines and the ability to supply anchors powdercoated to Colorbond® colours allows for seamless integration with today’s modern roof lines. Secure Anchor Systems anchors are now being more widely accepted on domestic as well as commercial projects by architects and designers.

The Corrugator® and Corrugator360® roof anchors are two such patented products being widely adopted and used throughout Australia, New Zealand and now North America.

The anchors are surface mounted, preventing the need to access the roof cavity and making penetrations through the sisalation, insulation or roof members. Fixing through roof members such as top chords on trusses can also void warranties from truss manufacturers.

Secure Anchor Systems also supplies a number of Ladder Access Points with the same surface-mounted principle for easy application. All Secure Anchor Systems anchors comply with and meet the 15 kN benchmark set out in AS1891.4 for fall arrest and can be installed in as little as 90 seconds with a standard cordless drill.

Other anchors are manufactured to suit metal roof profiles, such as Trimdek® and Spandek® and Secure Anchor Systems can provide custom servicing for clients with specific height safety needs.



Is your product new?

If you wish to have this icon displayed, please tick this box.