

# Easyscreen™ Sub Framing

## Description of New Product

Breezway has recently designed and introduced Easyscreen™ Sub Framing to allow for installation and use in commercial projects.

## Product Offer

- Suits Easyscreen™ Window System
- Sub Framing components available:
  - Sub Sill (seals included) (1 required per opening)
  - Sub Sill Dam Plugs (un-coated) (2 per required opening)
  - Sub Head (seals included) (1 required per opening)
  - Jamb Angles (4 required per opening)
- Normal finish options apply
- Longest lengths available:
  - Powder coated Sub Framing extrusions = 4m
  - CAA Sub Head or Sub Sill extrusions = 6m
  - CAA Jamb Angle extrusions = 6.5m
- Single pair of Sub Sill Dam Plugs supplied at no charge with each Sub Sill purchased.

## Features and Benefits

### Features

Sub Sill and Sub Head are custom designed for the Easyscreen™ Window System.

The lower leg of the Sub Sill can be snapped off.

### Benefits

The Easyscreen™ Altair™ Louvre Window System and the Easyscreen™ Powerlouvre™ Window System can now be installed into commercial projects using sub framing.

The Z-profile of the Sub Sill can be converted to a L-profile (aka flat-profile).

## Size Formulas

### Height

**For Easyscreen™ Window Heights up to 791mm:**

Combined Easyscreen™ Sub Framing and Easyscreen™ Window Height = Window Height + approximately\* 45mm

**For Easyscreen™ Window Heights 792mm and greater:**

Combined Easyscreen™ Sub Framing and Easyscreen™ Window Height = Window Height + approximately\* 30mm

### Width

Combined Easyscreen™ Jamb Angles and Easyscreen™ Window Width = Window Width + approximately\* 24mm

\*To be confirmed by window installer.

## Pricing & Inclusions

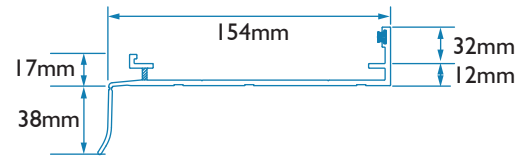
Product Description	Product Code
Easyscreen™ Window Sub Sill	1900 00380
Sub Sill Dam Plugs	1900 00383
Easyscreen™ Window Sub Head	1900 00381
Easyscreen™ Window Jamb Angle	1900 00382

## Warranty

Standard Breezway Warranty applies.

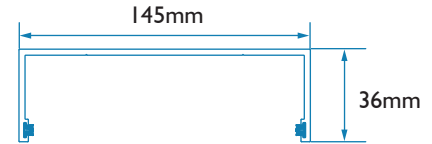
## Contact Us

Please contact Breezway on 1800 777 758 or email [sales@breezway.com.au](mailto:sales@breezway.com.au) for more information.



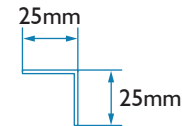
**Easyscreen™ Sub Sill**

Use to secure the Sill of Easyscreen™ Window Systems when installation using sub framing is required.



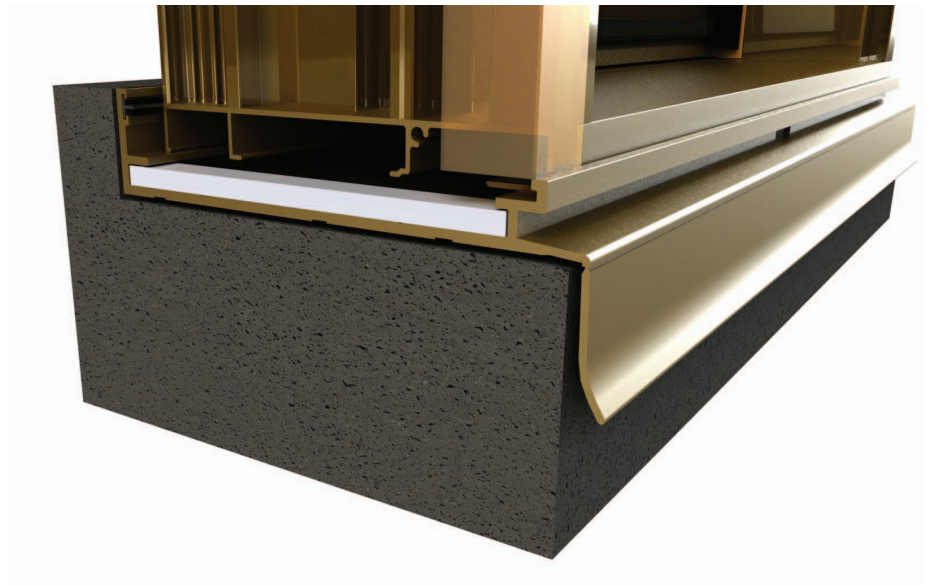
**Easyscreen™ Sub Head**

Use to secure the Head of Easyscreen™ Window Systems when installation using sub framing is required.



**Easyscreen™ Jamb Angles**

Use to secure the Jamb of Easyscreen™ Window Systems when installation using sub framing is required.



*breezway™*

[www.breezway.com.au](http://www.breezway.com.au)