



V1000 | V2000 | V3000 | V4000 | V5000 | V6000 | V7000 | V8000 | V9000

THE COMPLETE STORY



RESIDENTIAL AND COMMERCIAL

*Louvre solutions for all seasons*



01

### Vollay™ V1000 Suite Mono-Skinned Louvre Systems

Slot System - (SS) Clip System - (CS)  
Tube System - (TS)

#### Fixed Privacy Screen System

- Flat, Splayed and Curved Blades along with the following Privacy Screen Blades - Aerofoil; Half Aerofoil; Batten; Half Batten; 'S' Blade.
- Blade sizes 30, 40, 50, 60, 80, 90 and 100mm.
- Wide range of Blade pitches.
- Able to be used in vertical or horizontal aspects.
- Custom Bracketing designed and manufactured in-house.



02

### Vollay™ V1000 Suite Fixed Privacy Screen System

- This highly sought after system provides a range of blade spacing and installation options available from no other system.
- Ask about our range of 5 blade designs - 90mm Aerofoil; the new cost-effective 90mm Half Aerofoil Blade; the 90mm Batten Blade; the Half Batten to enable a more cost effective alternative; the very attractive 'S' Blade completes the range and offers a very elegant wave effect while providing a cost effective solution.
- The range of blades can be installed in the standard angled configuration or installed in an offset manner to provide a true double-sided visual barrier which does not compromise air-flow.
- The design registered Stile, incorporates such features as a spline-groove so that fly



03



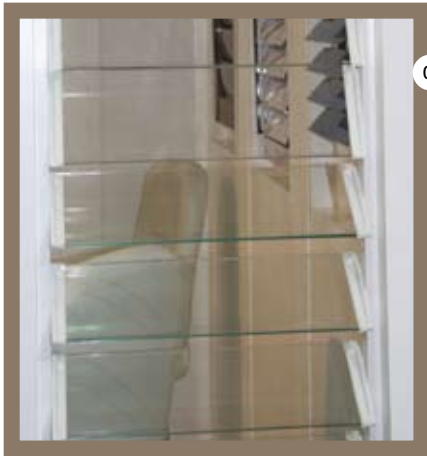
04

- wire can easily be installed to create a bug free environment.
- The wide range of Blade designs will soon be supported with a 70x45mm Stile which will allow the blades to be installed into a frame to take advantage of the Vollay™ Sliding door track systems.
- Universal Cross Rail is self draining eliminating potential water traps.

01 TS System gives privacy to this waterside apartment.  
02 A combination of V1000 Blades provides shading and privacy to this apartment/retail development.  
03 The V1000 Tube System is not only functional but adds charm to this apartment complex.  
04 Flat Blades used here can be arranged vertical or horizontal.  
05 The V1000 Slot System pictured here is an attractive and robust solution for these residences.

05





01



02

01. V2000 152mm toughened glass Louvre Blade used here to complement this office's contemporary design.

02. Complete privacy is obtainable.

03. Modern lines are enhanced with the setting back of these bronze Blades.

### Vollay™ V2000 Window Louvre Systems

- The Vollay™ V2000 Suite Louvre Window System (LWS) was developed to provide a healthy alternative to energy-hungry air conditioning.
- Provide a weatherproof barrier that is able to be operated either manually or via our IP66 Rated Motorised System.
- Louvre Blades are available in widths of 102 and 152mm in Clear Glass, Obscure Glass, Powder Coated Wood Grain Aluminium.
- Able to fit most window openings while achieving superior levels of natural air conditioning but be weatherproof in the closed position.
- Window Louvre System that circulates twice as much air than conventional windows.
- This product creates a synergy with nature. It makes your home very comfortable by bringing the fresh outside air in, while taking the stale inside air, out.
- Supported with a security bar system enabling peace of mind when the Louvres are in the open position.
- All componentry is corrosion resistant and warranty applies accordingly.
- Designed to comply with Australian Standards.

03







01

## Vollay™ V3000 Suite Concealed Blade System

- The Vollay V3000 Suite Concealed Blade System (CBS) has been developed to provide an aluminium shutter range with clear lines and Blades that are completely concealed within the Stile.
- Available in Aerofoil Blade sizes of 55, 68, 90 and 150mm.
- This system is popular in commercial applications where a care-free sliding system is required.
- No more clashing of Blades when left in the open position.
- This system is the ideal choice when you require little or no light passing between sliding panels. This is especially relevant when privacy is paramount.
- The V3000 System appeals to those who require a modern modular look and feel.
- This system can be fixed, sliding, hinged or bifolding configuration.
- Can be motorised using our IP66 Rated European Electric Motors.
- All componentry is corrosion resistant and warranty applies accordingly.
- Designed to comply with Australian Standards.



02



03

01 Top Hung Sliding System on Vollay™ Brackets.

02 Bifolding 90mm Blade used here to separate the living area from the outdoors.

03 V5000 90mm Sliding System adds style to this up market apartment.

## Vollay™ V4000 Linenwood Timber Shutter Systems

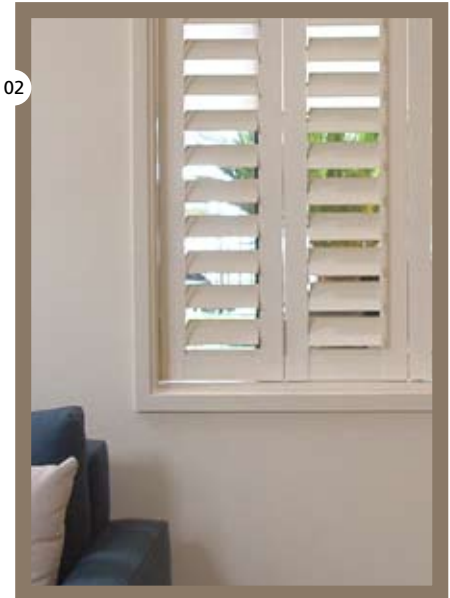
01

- V4000 is able to cover conventional, angled and arched windows using either a hinged, bifolding or sliding configuration.
- V4000 utilises the use of plantation timber and the latest finger-jointing technology to produce a stable, bow resistant shutter.
- The Vollay™ Linenwood Shutters cover window opening sizes of up to 900mm using a single panel, enabling a less cluttered look across the window.
- Available in a range of high quality Low Sheen finishes that stand the test of time.
- Offering a wide range of flat and aerofoil Blades in 45, 63, 90, and 115mm widths.
- The Blades are able to be fully adjustable through 180°, closing up and down providing the ideal ventilation, shading and screen options for the window.
- These Shutters are supported by a range of Framing and Bracketing solutions to allow ease of installation on any window.
- V4000 Linenwood is supported with a range of Face Fix, 'Z' Frame System and Sliding/Bifolding Tracking to enable the successful installation into even the most difficult windows.

01 V4000 Linenwood enhances the formal look of this beautiful living room.  
 02 The filtered light through these Linenwood Shutters creates a homely atmosphere in this entertainment area.  
 03 Linenwood Shutters is the perfect choice to separate these modern living areas.



02



03





## Vollay™ V5000 Suite Aluminium Shutter Systems

Adjustable Blade - AB

Fixed Blade - FB

Motorised Blade - MB

Systems available - Fixed, Sliding,  
Hinged, Bifolding, 'Slide and Stack',  
'Stack and Hide'.

- The Vollay V5000 System has an enviable range of Aerofoil Blades to choose from in 55, 68, 90, and 115mm widths to further expand your design options.
- The Blades are adjustable a full 180° both up and down.
- This system can be fixed horizontal or vertical.
- Assembled using stainless steel fixings and UV impregnated plastics.
- V5000 Shutters can be either Top Hung or Bottom Slide, on a straight, curved or bent track.
- Custom Bracketing designed and manufactured in-house.
- This system allows span widths of up to 1,500mm.
- Humidity and moisture are no longer a problem using the Vollay™ V5000 System.
- Beautiful enough to use inside, robust enough to use outside.
- The V5000 System panels can be locked in position as well as the option of separately locking the Blades. Further, Flush Bolts can be used to extend your locking options.
- Enjoy the shade in Summer or the warm sun in winter with a simple tilt of the blades without compromising privacy.

01. Top Hung 90mm Bladed Shutters in a curved track on this apartment/retail project.



02. Special wood grain powder coated Vollay™ Shutters set off this Spanish inspired home.

03. Panels are slid into hiding on this ocean-side residence using the Vollay™ 'Stack and Hide' System.

04. 60mm Square Section used here to make a maintenance-free privacy fence in wood grain powder coat.

01



01 V5000 90mm Bladed shutters provide total protection for this glorious 'Day Room'.  
02 The alabaster 90mm Vollay™ Shutter makes a great divider for this living area.  
03 115mm Blades keeps the harsh summer sun out of this prestigious residence.  
04 These shutters help create some mystery as you enter this living room full of eclectic furnishings.

02



03



04







01



02

**Out of Sight**



03

### Vollay™ V6000 Motorisation

- The V6000 Electric Motors have been sourced to automate the wide range of Shutter and Louvre Systems.
- Manufactured to a high standard and have a high 'cycle life'.
- The Vollay™ V6000 Motor is compact to enable it to be hidden within the Vollay™ Aluminium Housing.
- The Motor was sourced through a reputable manufacturer and went through extensive testing.
- The V6000 Motor includes in built Limit Switches and Thermal Overload protection.
- The V6000 Motor is manufactured in Germany to exacting standards.
- It is enclosed in a two piece casing to further enhance its IP66 Rating.
- The Motor operates using a dual spline adaptor that connects via a 10mm Square Drive Rod.
- The V6000 Motor can also incorporate an adjustable gearbox system which provides you with options to adjust your Louvres.
- Able to interface with 'Environmental Control Systems', C-Bus and hard wire switching.

### Automation

- The Vollay™ V6000 Sensors have been sourced to automate the wide range of Shutter and Louvre Systems.
- Designed to interface with other products.
- Vollay™ V6000 Sensors provide a quality product that is reliable and user-friendly.

- The V6000's contemporary style and design harmonises with the surrounding architecture.
- V6000 Sensors are simple yet effective and easy to install on-site.

- 01. The funky Remote Control comes in various colours.
- 02. Light and temperature control at the touch of a button.
- 03. Wall mounted Remote Control.
- 04. Wind and Heat Sensor melds with all building types.
- 05. The Vollay™ Slim Motor is out of sight, hidden in the roofing structure and out of mind thanks to the motor's IP66 Rating.\*\*\*

\*\*\* IP66 - Complete protection against dust and powerful jets of water aimed at the Motor from any direction.



04



05



## Vollay™ V7000 Opening Roof Systems

### 200mm Aerofoil Blade System - ABS

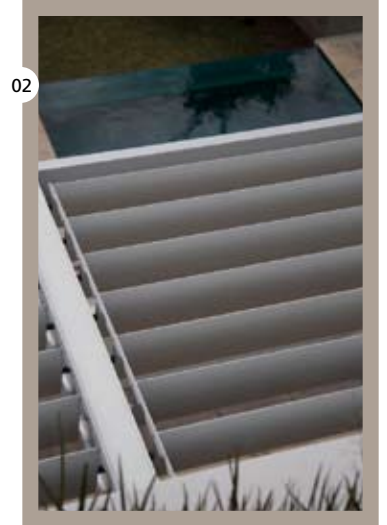
- Designed to provide a water resistant alfresco roofing system.
- 2 Blade options - Elliptical and Shingle (for roofs exceeding 6° pitch).
- The ability to adjust the Blade a full 95° or 135°.
- This system can be interlinked to enable multiple panels to be operated simultaneously.
- Includes a Spring Tensioning Control System to create a positive closure to ensure a superior level of water resistance and reduces wind chatter.
- Able to be fixed horizontal or vertical.
- Assembled using stainless steel fixings, pivots and HDPP Bushes.
- Motorisation is by way of our high quality V6000 IP66 Rated Electric Motor.
- Featuring the Vollay™ Intergrated Guttering System (IGS).
- If only a Sun Louvre is required then our V9000 Blade options open up a range of possibilities.
- Will interface with various control systems.
- Extruded from T6 tempered Aluminium to Australian Standards.

01



02

01 200mm Aerofoil Blade used here to shade outdoor living and protect exquisite timber flooring in this architect designed home.  
02 Detail of same showing streamline strut.



01 This 200mm Roofing System brings light and shade to this large outdoor living area.  
02 The Vollay™ Roofing System is functional and looks exquisite from all angles.  
03 This installation protects the sun's rays from destroying the expensive furnishings below.

To find out more, go to [vollay.com](http://vollay.com)



## Vollay™ V8000 External Venetian Systems

Non Retractable System - NRS  
Tilt and Retract System - TRS

- Designed to provide an operable aluminium screening system to cover large balconies, hard to reach windows or stairwells and glass roofing areas especially for inner city living.
- NRS available in 90 and 150mm Blades and 150 and 200mm Blades in the TRS in both flat and curved Blades.
- This extremely robust system is built to last using extruded aluminium gear racks and bracket clamping systems ensuring years of trouble-free operation when compared to systems using plastic components.
- The NRS Blades adjust to 135° and the TRS Blades operate through a full 170°.
- Manual operation is an option up to 9sqm and a span of 3m.
- Our motorised option uses a our IP66 Rated European motor allowing you to connect and adjust large areas simultaneously using C-Bus systems or remote control.
- The Vollay™ V8000 Tilt and Retract System will create a thermal barrier however will fully retract into a sturdy head box when not in use or required to do so.
- The TRS includes a reliable locking system to secure the venetians during wind gusts.
- Separate motors are used to rotate the blades and retract and lower the venetian ensuring superior C-bus integration and a more reliable retraction which is especially important during wind gusts and to a lesser extent to assist in the overall aesthetics of the venetian.

01

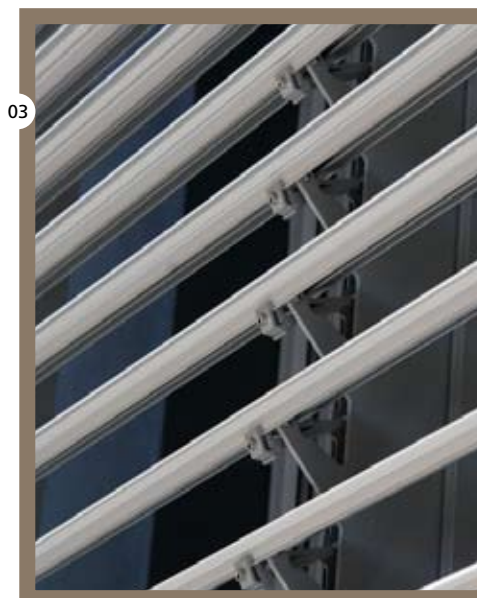


01 Non Retractable Motorised Blade used here to screen the living areas of this apartments.  
02 Non Retractable Motorised Venetians applied here to combat the harsh sun's rays.  
03 Detail of the 'built to last' all metal compertry

02



03



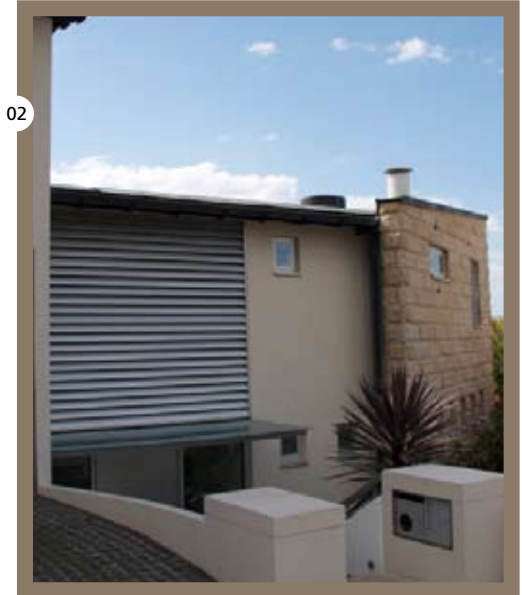
**Vollay™ V9000  
Aluminium Louvre Systems**  
150, 200, 300, 400 and  
600mm.

- Designed to provide screening, shading and privacy for larger projects.
- Available in a wide range of Blade sizes.
- The ability to set the Blades to the ideal angle using a wide range of bracketing to enable the optimum shading and privacy solutions.
- Able to be Fixed, Manually Operated or Motorised using our V6000 IP66 Rated Electric Motor.
- Can be fixed either horizontal or vertical.
- The inherent strength in the Blades enable them to span large distances unsupported.
- A complete range of End Caps, Brackets and assorted components are available.
- Designed to compliment Vollay's full range of Blade options.
- Extruded from T6 tempered Aluminium to Australian Standards.
- The elegance of all five of these Blade options will transform any building.

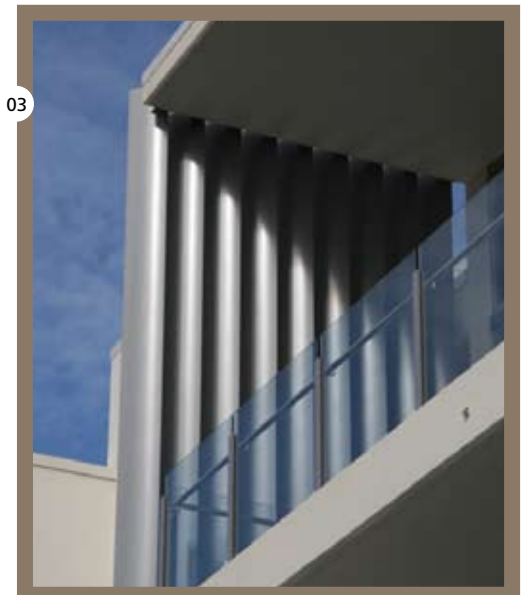
01. 600mm Aerofoil Blades in Red and White.  
02. 400mm Aerofoil Blades add shade and impact to this retail/apartment complex.  
03. The morning sun is eliminated here using a Vertical 300mm Aerofoil Blade.



01

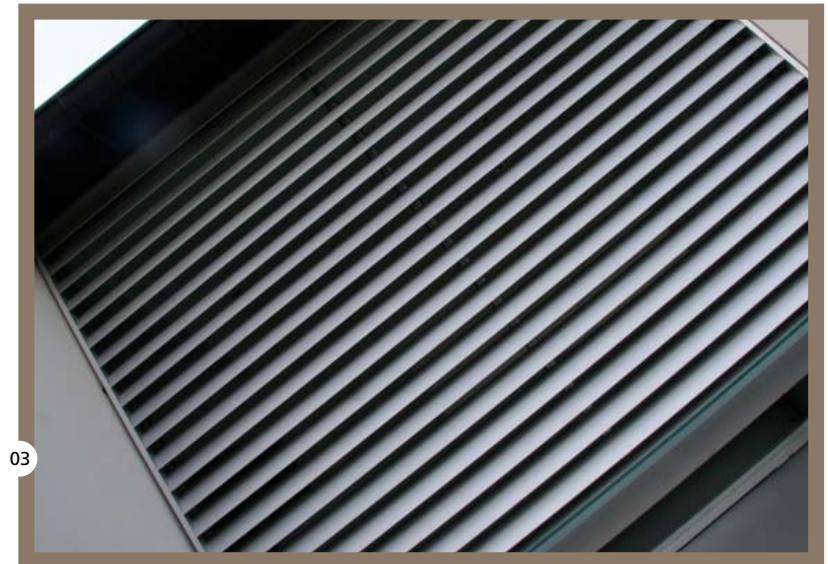


02



03





**All Volla™ products comply with the same stringent specifications and standards.**

- Extruded from aluminium alloy 6063 and tempered to T6 as per Australian Standard AS1866:1997.
- All powder coated surface finishing is applied to a minimum of 60microns and complies with Australian Standard AS3715-2002.
- All anodised finishes are applied to a minimum of 20microns to comply with Australian Standard AS1231-2000.
- All finishes conform to corrosion resistance standards as per Australian Standard AS1580.457.1:1996.
- All Fixings, Springs and assembly components are manufactured from stainless steel and all plastic components are protected with UV inhibitors.
- The Volla™ Aluminium Shutter is available in the following standard colours - Gloss White, Satin White, Alabaster, Natural Anodised, Black, Light Cedar and Dark Cedar. Special powder coat colours are available on request.
- Cutting edge in-house 2D and 3D CAD Software.
- The Volla™ Suites are supported with a full range of both written specifications and technical drawings and are available as PDFs on our website or upon request from our office.
- A full range of warranty powder coat colours are also available.
- All electric motors are IP66 Rated - This means that our motors are protected against the ingress of dust and high pressure water jets from any direction.



Volla™ Residential Aluminium Shutters and Louvres are supported with a 10 Year Warranty against twisting, warping, sagging and surface finish failure. Further, all fixings and moulded componentry will maintain a functional level of operation for the life of the warranty.



[www.volla.com](http://www.volla.com)

Available from

