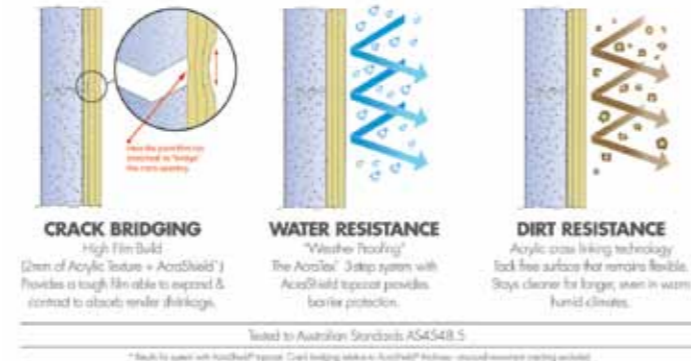


Totally compliant system by Dulux® AcraTex® - the industry's largest coating supplier

The Exsulite™ Thermal Facade system has been engineered using genuine components and installation procedures to deliver a total integrated system that eliminates substitution of alternative and non compliance options.

- Cavity design incorporating a moisture management system
- Specified system to ensure all jobs only use Exsulite™ Thermal Facade system components
- Installation guide lines & site procedures to ensure every job is installed correctly
- Trained Exsulite™ Installers
- Job Quality Control procedures

How High Build AcraTex® Acrylic Texture Protects



IDEAL
for retrofitting solutions
For existing & outdated facades requiring improved thermal efficiency.

Dulux® AcraTex® Project Support

The Exsulite™ Thermal Facade System comes with installation procedures and guidelines to assure architects, builders and building owners peace of mind.

Design guidelines, installation methods and project specific specifications are available on request through your Dulux® AcraTex® representative or call 1 300 662 841 for further information.



For further information go to: www.acratex.com.au
Dulux Australia Dulux Customer Service: 1 300 662 841
1 Jeanes Street, Beverley SA 5009 Australia

Dulux® AcraTex® is a division of DuluxGroup (Australia) Pty Ltd.
ABN 67 000 049 427. Dulux and AcraTex are registered trade marks and Exsulite™ is a trade mark.

EX5475/0212

The new standard in Thermal Facade Cladding



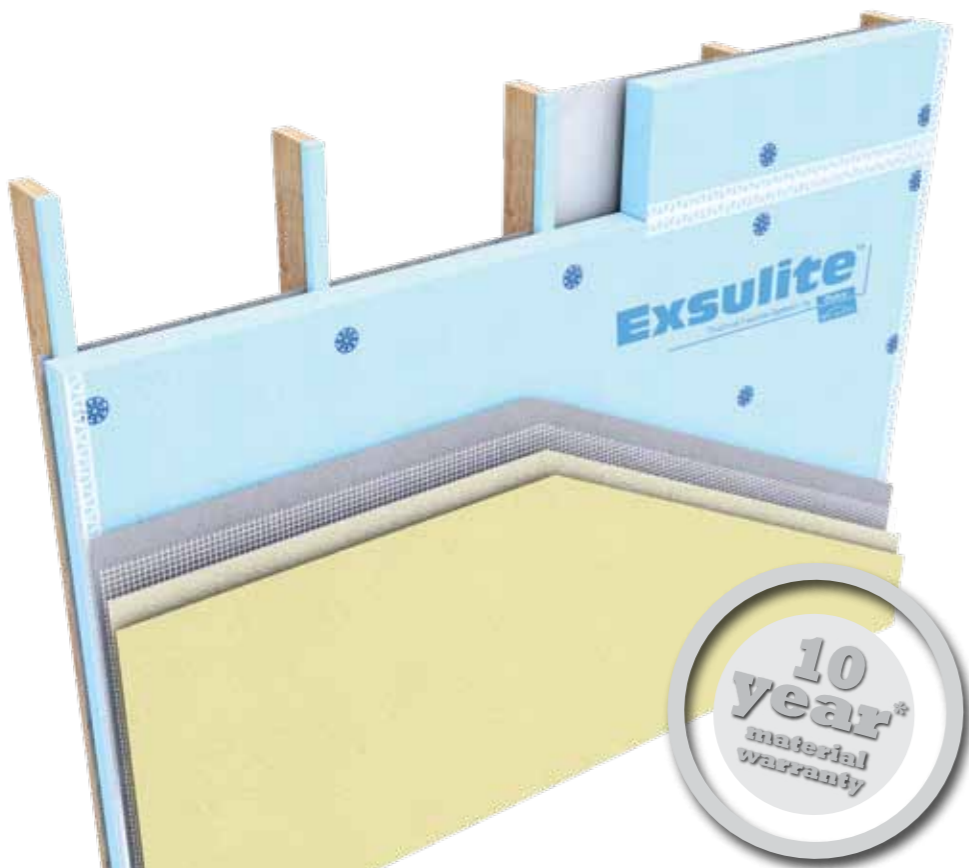
Thermal Facade Cladding from Dulux® AcraTex®

Introducing the quality and technology you expect in a total cladding system that includes wall wrap, thermal cladding, acrylic texture coating and weatherproof top coat from Dulux®, the industry's largest coating supplier.

Total integrated system from design to installation

- Cavity System
- Weatherproof membrane topcoat
- Moisture management
- Suitable for bushfire prone areas
- CodeMark™ compliance
- High R-Value
- Installed by a Dulux® Exsulite™ trained Installer
- Total design & supply by Dulux® AcraTex®

Fully integrated & CodeMark compliant



The Exsulite™ Thermal Facade System by Dulux® AcraTex® is a "cavity" system for new residential and light commercial construction. It can also be used as a facade remedial system for rectification and rejuvenation projects when used as a direct fix system.

*Dulux AcraTex Products are designed to be used in system as specified in relevant Product Data Sheets and Approved Dulux AcraTex Specifications. A 10 year materials warranty is provided when a full Exsulite System is installed by an Exsulite Trained Installer. If the product does not perform as specified, unless otherwise detailed, we will replace the goods free of charge. To make a claim under warranty, please contact Dulux Customer Service by telephone on 13 23 77 or by post to Dulux AcraTex, 1 Jeanes St, Beverley, SA 5009. You must show proof of purchase and bear all expenses incurred in making a claim. The benefits of this warranty are in addition to other rights and remedies under any applicable law. Our goods come with guarantees that cannot be excluded under the Australian Consumer Law. You are entitled to a replacement or refund for a major failure and compensation for any other reasonably foreseeable loss or damage. You are also entitled to have the goods repaired or replaced if they fail to be of acceptable quality and the failure does not amount to a major failure.



CodeMark™ Certified



The Exsulite Thermal Facade System by Dulux® AcraTex® is CodeMark™ certified and in compliance with the Building Code of Australia (BCA), full range of performance criteria including structural stability, wind resistance, durability, thermal resistance, weatherproofing and dampness. This provides consultants, building surveyors, architects and building owners with the ultimate in light weight cladding systems from one supplier in Dulux®.

System installation and job quality control documentation is project managed by a Dulux® trained Exsulite™ installer ensuring all jobs are installed in accordance with Exsulite™ Thermal Facade system specifications.

The CodeMark™ Certificate of Conformity can be obtained on request.

BAL 29

Bushfire Attack Level (BAL)

Exsulite has been tested for heat intensity and ember attack of bushfires in relation to AS 3959-2009 Construction of Buildings in Bushfire prone areas. The Exsulite Thermal Facade System has passed AS 1530.8.1 and is approved for use in bushfire prone areas. Our BAL 29 Certification is also applicable for building sites requiring BAL 19 & 12.5 rated systems. For BAL system specifications & installation guidelines please call Dulux Customer Service 1300 662 841.

"R" Values

Exsulite Thermal Value (60mm Cavity System)	R 2.71
Exsulite Thermal Value (75mm Cavity System)	R 3.102
Exsulite Thermal Value (100mm Cavity System)	R 3.755

*R Rating figures obtained from SmartRate. Full breakdowns of figures are available upon request.

Features	Benefits
Weatherproof Barrier	Weatherproof against moisture ingress
Moisture Management	Prevents wall damage caused by condensation within the wall cavity
High R-Value	Superior insulation with R-Values providing energy efficiency
Low Maintenance	AcraTex® coating systems provide a dirt resistant surface, maintaining that new look for a longer period
Total system warranty	When installed by an Exsulite trained Installer
Minimum 'M' grade made to AS 1366.3 – 1992, treated with Disodium Octaborate Tetrahydrate (D.O.T)	Defence against vermin and insects



Order from Dulux® AcraTex®



Delivery of Exsulite™



Install Exsulite™ thermal cladding



Delivery of AcraTex® texture coating



Application of AcraTex® texture coating



Hand-over to the client