

Void.

*The seduction of the urban void.*

Engagement at the edge - a place for the eye to rest and gaze, a nice way to start the day, a seat in the sun, fresh air, promenading, playing, jogging, pramming, biking, an escapery.

An ephemeral landscape of seasons - a time clock of change, migratory birds, the ebb and flow of water and riparian plantings, a re-colonisation of the land, an ecological presence within the community.

An aberrant hybrid of artificial and natural habitats - the sports facilities nestle discreetly within this fluid territory. A defined

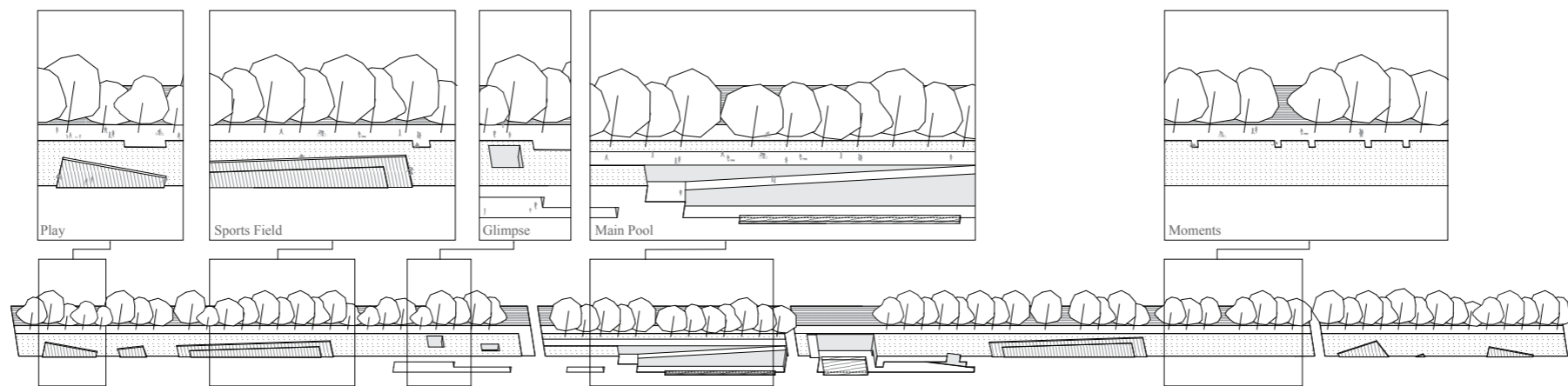
depression of synthetic turf cuts a seating edge against this landscape, skateboarders ramp through the field.

Not behind a fence - the main outdoor pool is secure yet engaging. Much like The Rink at Rockefeller Center, the pool becomes a stage set, where the splash and joy of activities lure passers-by to the edge.

An aquatic other world landscape - a counterpoint experience to the everyday. Ramps puncture, water blinks, planting cascades, light floods the chasm, and the sky is openly framed.

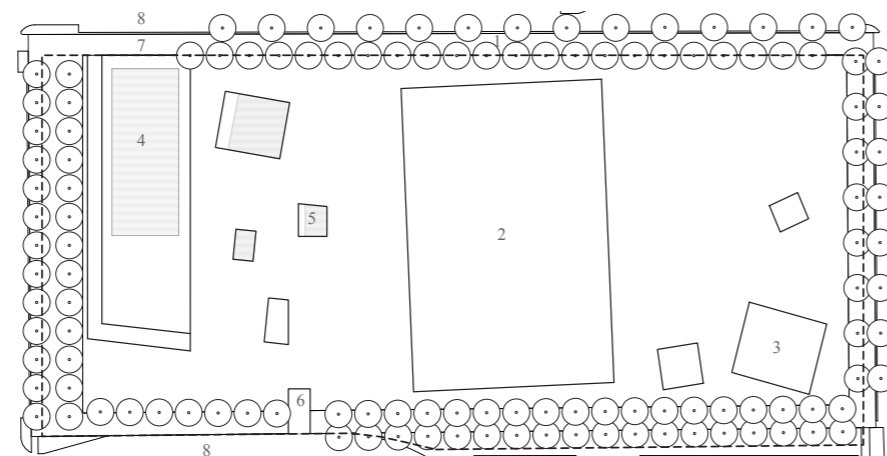
An echo of the site's past layers....

Edge.

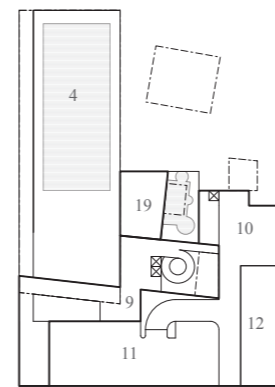


Unfolded Edge Diagram

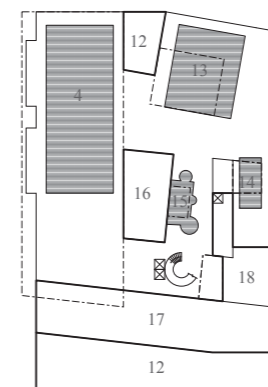
Stage.



Site Plan



Mezzanine Level Plan



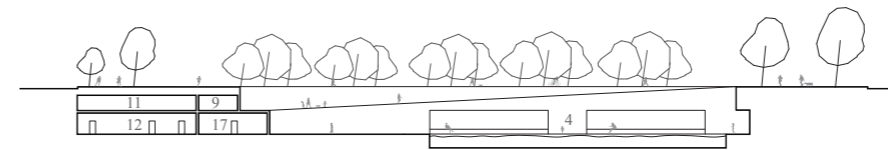
Pool Level Plan

Landscape.



- 1. Edge
- 2. Multi purpose sports field
- 3. Skate & play
- 4. Main Pool
- 5. Apertures with ETFE roof in winter
- 6. Vehicular Ramp
- 7. Bicycle Parking
- 8. Drop off
- 9. Front of house
- 10. Loading
- 11. Parking
- 12. Plant

- 13. Program Pool
- 14. Hydrotherapy Pool
- 15. Leisure Pool
- 16. Wet Change Room
- 17. Gymnasium
- 18. Dry Change Room
- 19. Admin



Legend

Section