

Innovative and Functional Door Hardware



StarTec Collection
2009



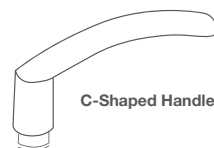
- Mifare™ technology
- Fast opening process
- DND function (Do Not Disturb)
- Suitable for use on apartment doors
- For door thickness 38 - 80 mm
- 1,000 audit trails, including unlocking via the use of the electronic card, emergency unlocking via the use of mechanical keys from outside, and opening the door from inside
- Individual customer designed front foil is possible
- Emergency manual key function
- Alarm function: long beep alarm when the latch is maliciously operated or the door is not closed properly.

DT Lite is an electronic identification and locking system from Häfele for secure and simple access control.

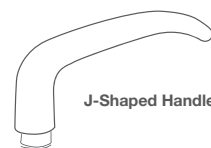
DT Lite can be used to flexibly allocate and block access.

DT Lite is easy to install or retrofit. The fact that identification is touchless makes the system wear resistant and extremely low maintenance.

- Secure
- Simple
- Convenient
- Economical
- Touchless
- Wear-resistant
- Low maintenance
- Can be retrofitted
- Extendable



C-Shaped Handle



J-Shaped Handle

DT Lite C-Shaped Handle
Satin Chrome

- Left Hand 499.19.174
- Right Hand 499.19.175

DT Lite J-Shaped Handle
Satin Chrome

- Left Hand 499.19.134
- Right Hand 499.19.135

Please enquire for other finishes.





- 450mm
- 600mm
- 900mm

903.00.922
903.00.924
903.00.927



- 450mm
- 600mm

903.00.972
903.00.974



- 450mm
- 600mm

903.00.912
903.00.914



- 300/450mm
- 400/600mm
- 800/1000mm
- 1000/1200mm

903.00.942
903.00.944
903.00.946
903.00.948



- 300mm
- 600mm

903.00.870
903.00.874



- 450mm
- 600mm

903.00.882
903.00.884



- 370/600mm

903.99.323



- 300/450mm

903.99.340



- 200/300mm
- 300/450mm
- 400/600mm
- 1000/1200mm
- 1400/1600mm
- 1800/2000mm

903.05.790
903.05.791
903.05.792
903.05.793
903.05.794
903.05.795



- 200/300mm
- 300/450mm
- 400/600mm
- 1000/1200mm
- 1400/1600mm
- 1800/2000mm

903.05.890
903.05.891
903.05.892
903.05.893
903.05.894
903.05.895



- 450mm
- 600mm

903.05.762
903.05.764



- 450mm
- 600mm

903.05.752
903.05.754



- 450/600mm
- 600/750mm
- 1000/1150mm

903.00.932
903.00.934
903.00.937



- 450mm
- 600mm
- 1000mm

903.00.070
903.00.074
903.00.078



- 450mm
- 600mm
- 1000mm

903.00.170
903.00.174
903.00.178



- 450mm

903.99.358

- Finish: Stainless Steel, satin
- Sizes: First dimension refers to fixing centres.
Second dimension (if shown) refers to overall length.



Lever Handles



Passage, Stainless steel 316
 • Polished 902.21.341
 • Satin 902.21.340
 Privacy, Stainless steel 304
 • Polished 902.21.345
 • Satin 902.21.344



Passage, Stainless steel 316
 • Polished 902.21.343
 • Satin 902.21.342
 Privacy, Stainless steel 304
 • Polished 902.21.347
 • Satin 902.21.346



Passage, Stainless steel 316
 • Polished 902.21.421
 • Satin 902.21.420
 Privacy, Stainless steel 304
 • Polished 902.21.425
 • Satin 902.21.424



Passage, Stainless steel 316
 • Polished 902.21.423
 • Satin 902.21.422
 Privacy, Stainless steel 304
 • Polished 902.21.427
 • Satin 902.21.426



Passage, Stainless steel 316
 • Polished 902.21.351
 • Satin 902.21.350
 Privacy, Stainless steel 304
 • Polished 902.21.355
 • Satin 902.21.354



Passage, Stainless steel 316
 • Polished 902.21.353
 • Satin 902.21.352
 Privacy, Stainless steel 304
 • Polished 902.21.357
 • Satin 902.21.356



Passage, Stainless steel 316
 • Polished 902.21.431
 • Satin 902.21.430
 Privacy, Stainless steel 304
 • Polished 902.21.435
 • Satin 902.21.434



Passage, Stainless steel 316
 • Polished 902.21.433
 • Satin 902.21.432
 Privacy, Stainless steel 304
 • Polished 902.21.437
 • Satin 902.21.436



Passage, Stainless steel 316
 • Polished 902.21.361
 • Satin 902.21.360
 Privacy, Stainless steel 304
 • Polished 902.21.365
 • Satin 902.21.364



Passage, Stainless steel 316
 • Polished 902.21.363
 • Satin 902.21.362
 Privacy, Stainless steel 304
 • Polished 902.21.367
 • Satin 902.21.366



Passage, Stainless steel 316
 • Polished 902.21.441
 • Satin 902.21.440
 Privacy, Stainless steel 304
 • Polished 902.21.445
 • Satin 902.21.444



Passage, Stainless steel 316
 • Polished 902.21.443
 • Satin 902.21.442
 Privacy, Stainless steel 304
 • Polished 902.21.447
 • Satin 902.21.446



Passage, Stainless steel 316
 • Polished 902.21.381
 • Satin 902.21.380
 Privacy, Stainless steel 304
 • Polished 902.21.385
 • Satin 902.21.384



Passage, Stainless steel 316
 • Polished 902.21.383
 • Satin 902.21.382
 Privacy, Stainless steel 304
 • Polished 902.21.387
 • Satin 902.21.386



Passage, Stainless steel 316
 • Polished 902.21.321
 • Satin 902.21.320
 Privacy, Stainless steel 304
 • Polished 902.21.325
 • Satin 902.21.324



Passage, Stainless steel 316
 • Polished 902.21.323
 • Satin 902.21.322
 Privacy, Stainless steel 304
 • Polished 902.21.327
 • Satin 902.21.326



Passage, Stainless steel 316
 • Polished 902.21.331
 • Satin 902.21.330
 Privacy, Stainless steel 304
 • Polished 902.21.335
 • Satin 902.21.334



Passage, Stainless steel 316
 • Polished 902.21.333
 • Satin 902.21.332
 Privacy, Stainless steel 304
 • Polished 902.21.337
 • Satin 902.21.336



Passage, Stainless steel 316
 • Polished 902.21.411
 • Satin 902.21.410
 Privacy, Stainless steel 304
 • Polished 902.21.415
 • Satin 902.21.414



Passage, Stainless steel 316
 • Polished 902.21.413
 • Satin 902.21.412
 Privacy, Stainless steel 304
 • Polished 902.21.417
 • Satin 902.21.416



Passage, Stainless steel 316
 • Polished 902.21.391
 • Satin 902.21.390
 Privacy, Stainless steel 304
 • Polished 902.21.395
 • Satin 902.21.394



Passage, Stainless steel 316
 • Polished 902.21.393
 • Satin 902.21.392
 Privacy, Stainless steel 304
 • Polished 902.21.397
 • Satin 902.21.396



Passage, Stainless steel 316
 • Polished 902.21.541
 • Satin 902.21.540
 Privacy, Stainless steel 304
 • Polished 902.21.545
 • Satin 902.21.544



Passage, Stainless steel 316
 • Polished 902.21.551
 • Satin 902.21.550
 Privacy, Stainless steel 304
 • Polished 902.21.555
 • Satin 902.21.554



Passage, Stainless steel 316
 • Polished 902.21.521
 • Satin 902.21.520
 Privacy, Stainless steel 304
 • Polished 902.21.525
 • Satin 902.21.524



Passage, Stainless steel 316
 • Polished 902.21.511
 • Satin 902.21.510
 Privacy, Stainless steel 304
 • Polished 902.21.515
 • Satin 902.21.514



Passage, Stainless steel 316
 • Polished 902.21.531
 • Satin 902.21.530
 Privacy, Stainless steel 304
 • Polished 902.21.535
 • Satin 902.21.534

Privacy Sets



Privacy Sets are supplied complete with privacy latch.

Accessories

Escutcheons

For Australian Locks



Oval Cylinder Escutcheon, Stainless steel 316
 Square
 • Polished 902.56.243
 • Satin 902.56.242
 Round
 • Polished 902.56.241
 • Satin 902.56.240



Thumbturn with 6x2mm Spindle, Stainless steel 316
 Square
 • Polished 902.53.247
 • Satin 902.53.246
 Round
 • Polished 902.53.245
 • Satin 902.53.244



Emergency Release for 6x2mm Spindle, Stainless steel 316
 Square
 • Polished 902.56.247
 • Satin 902.56.246
 Round
 • Polished 902.54.245
 • Satin 902.54.244



Blank Escutcheon, Stainless steel 316
 • Polished 902.54.907
 • Satin 902.54.906

Escutcheons

For Euro Locks



Profile Cylinder Escutcheon, Stainless steel 316
 Square
 • Polished 902.52.243
 • Satin 902.52.242
 Round
 • Polished 902.52.241
 • Satin 902.52.240



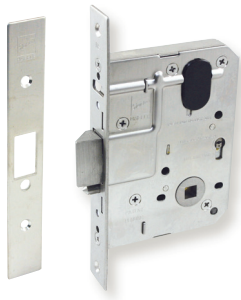
Thumbturn and Emergency Release set, with 8x8mm Spindle, Stainless steel 316
 • Polished 902.53.243
 • Satin 902.53.242



Thumbturn and Emergency Release set, with 8x8mm Spindle, Stainless steel 316
 • Polished 902.53.241
 • Satin 902.53.240



Mortice Locks



Australian Mortice Lock
60mm backset

- Stainless steel, satin 911.23.320
- Stainless steel, polished 911.23.321
- Brass, polished PVD 911.23.328



Euro Mortice Lock
60mm backset / 85mm distance

- Stainless steel, satin 911.03.493
- Brass polished, lacq 911.03.492

(Also available with 45mm backset)



Euro Rebate Kit

- Stainless steel, satin 911.39.018
- Brass, polished 911.39.017



Euro Roller Bolt Lock
55mm backset / 24mm forend width

- Steel silver, nickel 911.24.007
- Stainless steel, satin 911.24.008
- Brass polished, lacq 911.24.009

Cylinders



Australian C4 Oval Cylinder
Keyed to Differ

- Brass, satin chrome 911.75.175

(Also available keyed alike)



Australian C4 Oval Cylinder with Thumbturn
Keyed to Differ

- Brass, satin chrome 911.75.176
- Cylinder Cam 911.75.179

(Also available keyed alike)



Euro Single Profile Cylinder
Keyed to Differ

- Brass, satin chrome 916.84.000

(Also available keyed alike)



Euro Double Profile Cylinder
Keyed to Differ

- Brass, satin chrome 916.84.100
- Brass, pol chrome 916.84.150

(Also available keyed alike)



Euro Profile Cylinder with Thumbturn
Keyed to Differ

- Brass, satin chrome 916.84.200
- Brass, pol chrome 916.84.250

(Also available keyed alike)

Deadbolt Locks, Tubular Latches, Tubular Bolts and Roller Latches



Deadbolt Lock with Thumbturn
60-70mm backset
Stainless Steel

- Satin 911.22.560
- Polished 911.22.561
- Brass 911.22.568
- Polished PVD 911.22.568



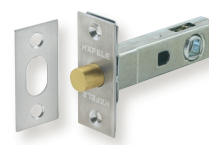
Deadbolt Lock, Double Cylinder
60-70mm backset
Stainless Steel

- Satin 911.22.570
- Polished 911.22.571
- Brass 911.22.578
- Polished PVD 911.22.578



Tubular Latch
60mm backset
Stainless Steel

- Satin 911.23.172
- Polished 911.23.259
- Brass 911.23.173
- Polished 911.23.173



Tubular Bolt
60mm backset
Stainless Steel

- Satin **911.22.406**
- Polished 911.22.426
- Brass 911.22.407
- Polished PVD 911.22.407



Roller Latch
Stainless Steel

- Satin 911.24.010
- Brass 911.24.011
- Polished 911.24.011

Hinges



Butt Hinge
100 x 75mm Loose Pin
Steel, chrome plated

- Polished 926.89.062
- Satin 926.89.064

100 x 75mm Fixed Pin

- Polished 926.89.072
- Satin 926.89.074

100 x 100mm Loose Pin
Steel, chrome plated

- Polished 926.89.082
- Satin 926.89.084

100 x 100mm Fixed Pin

- Polished 926.89.092
- Satin 926.89.094



Butt Hinge
100 x 75mm Loose Pin
Stainless steel

- Polished 926.84.001
- Satin 926.84.000

100 x 75mm Fixed Pin

- Polished 926.84.051
- Satin 926.84.050

100 x 100mm Loose Pin
Stainless steel

- Polished 926.84.011
- Satin 926.84.010

100 x 100mm Fixed Pin

- Polished **926.84.061**
- Satin **926.84.060**



Butt Hinge, Ball Bearing
100 x 75mm Fixed Pin
Stainless steel

- polished 926.84.031
- Satin **926.84.030**
- Brass 926.84.038
- polished 926.84.038

100 x 100mm Fixed Pin
Stainless steel

- polished 926.84.041
- Satin 926.84.040
- Brass 926.84.048
- polished 926.84.048



Lift Off Hinge
100 x 75mm
Stainless steel, satin

- DIN Right 926.27.803
- DIN Left 926.27.703



Fastfix Hinge For Timber Frames
100 x 70mm
Stainless steel

- Satin 926.97.001
- Polished 926.97.004
- Brass plated 926.97.002



Fastfix Hinge For Aluminium Frames
100 x 70mm
Stainless steel

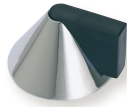
- Satin 926.97.000
- Polished 926.97.003
- Brass plated **926.14.080**

Door Stops



Brass
 • Chrome, polished
 • Chrome, satin
 • Nickel, satin
 • Polished

937.01.102
 937.01.104
 937.01.106
 937.01.108



Brass
 • Chrome, polished
 • Chrome, satin
 • Nickel, satin
 • Polished

937.52.502
 937.52.504
 937.52.506
 937.52.508



Stainless Steel
 • Satin
 • Polished

937.51.710
 937.51.711



Stainless Steel
 • Satin

937.12.100



Stainless Steel
 • Satin
 • Polished

938.22.000
 938.22.001

Flush Handles



Visible Fix, 127 x 45mm
 Stainless Steel
 • Satin

902.00.800



Visible Fix, 129 x 37mm
 Stainless Steel
 • Satin

902.00.802



Image Updated

Concealed Fix, 130 x 37mm
 Stainless Steel
 • Satin

152.51.001



Concealed Fix, 140 x 45mm
 Stainless Steel
 • Satin

152.52.002



Concealed Fix, 130 x 37mm
 Brass
 • Chrome plated polished
 • Chrome plated satin
 • Nickel plated satin

901.01.502
 901.01.504
 901.01.506



Bathroom Accessories

Rembrandt Series



Hook
 980.60.132



Toilet Roll Holder
 980.60.302



Towel Ring
 980.60.102



Toilet Brush Holder
 980.60.312



Glass Shelf, 500mm
 980.60.212



Towel Rack, 580mm
 980.60.262



Towel Rail, 660mm
 980.60.112



Soap basket
 980.60.012



Soap Dish with Holder
 980.60.312



Glass with Holder
 980.60.022



Design Centres & Showrooms

We recognise that there is simply nothing better than the real thing to convey the true quality and finish of our products. Häfele Design Centres are equipped with an extensive range of displays including our Startec range of innovative and functional door hardware.

Updated regularly, the diverse range of innovative products are designed to improve the functionality of residential, commercial, retail and hospitality projects.

HÄFELE AUSTRALIA PTY. LTD. STATE OFFICES

Victoria - Head Office -

8 Monterey Road, (P.O. Box 1066)
Dandenong VIC 3175
Telephone: (03) 9212 2000
Fax: (03) 9212 2001
E-mail: info@hafele.com.au

New South Wales

10 Forsyth Close,
Wetherill Park NSW 2164
Telephone: (02) 8788 2200
Fax: (02) 8788 2201
E-mail: nsw@hafele.com.au

Queensland

12 Selhurst Street,
Coopers Plains QLD 4108
Telephone: (07) 3344 1533
Fax: (07) 3344 1770
E-mail: qld@hafele.com.au

Western Australia/N.T

29-33 Juna Drive,
Malaga WA 6090
Telephone: (08) 9249 3833
Fax: (08) 9249 3328
E-mail: wa@hafele.com.au

South Australia

21 Chesser Street,
Adelaide SA 5000
Telephone: (08) 8232 9933
Fax: (08) 8232 9977
E-mail: sa@hafele.com.au

Australian Capital Territory

1/88 Newcastle Street,
Fyshwick ACT 2609
Telephone: (02) 6202 2800
Fax: (02) 6228 1418
E-mail: act@hafele.com.au

Tasmania

262 York Street,
Launceston TAS 7250
Telephone: (03) 6331 7106
Fax: (03) 6334 6414
E-mail: tas@hafele.com.au

For all customers in country regions
Call 1300 659 728

DESIGN CENTRES

Melbourne Design Centre

Lvl 1, 75-77 Flinders Lane,
Melbourne VIC 3000
Telephone: (03) 9212 2000
Fax: (03) 9652 3701
E-mail: info@hafele.com.au

Sydney Design Centre

115 Flinders Street,
Surry Hills NSW 2010
Telephone: (02) 8788 2200
Fax: (02) 9692 0711
E-mail: nsw@hafele.com.au

Newcastle Design Centre

Unit 1, 47 Bolton Street,
Newcastle NSW 2300
Telephone: (02) 8788 2200
Fax: (02) 4921 0901
E-mail: nsw@hafele.com.au

Brisbane Design Centre

1 Breakfast Creek Road,
Newstead QLD 4006
Telephone: (07) 3344 1533
Fax: (07) 3253 3701
E-mail: qld@hafele.com.au

Hobart Design Centre

309 Liverpool Street,
Hobart TAS 7000
Telephone: (03) 6331 7106
Fax: (03) 6334 6414
E-mail: tas@hafele.com.au

Perth Design Centre

Ground Floor, 105 St Georges Terrace
Perth WA 6000
Telephone: (08) 9249 3833
Fax: (08) 9249 3328
E-mail: wa@hafele.com.au
Opening Mid 2009

HÄFELE NEW ZEALAND LTD. STATE OFFICES & DESIGN CENTRES

Eastern Design Centre

16 Accent Drive,
East Tamaki, Auckland
Telephone: (09) 274 2040
Fax: (09) 274 2041
E-mail: info@hafele.co.nz

Wellington Design Centre

The Wool Store, Level 1
262 Thorndon Quay, Wellington
Telephone: (04) 472 0294
Fax: (04) 472 0295
E-mail: wellington@hafele.co.nz

Christchurch Design Centre

5 Wigram Close
Sockburn, Christchurch
Telephone: (03) 343 8200
Fax: (03) 343 8201
E-mail: christchurch@hafele.co.nz

Auckland Design Centre

62 Cook Street
Auckland City, Auckland
Telephone: (09) 274 2530
Fax: (09) 274 2531
E-mail: architectural@hafele.co.nz

Freephone 0800 4 HAFELE

HÄFELE

www.hafele.com

This catalogue is for the use of the recipient only. It remains in all respects the property of Häfele. Reproduction of this brochure in whole or in part, or the reproduction of the illustrations as well as the copying of the layout, is strictly prohibited. All measurements given in this publication are not binding. Rights for design improvements reserved. No responsibility for typographical or other errors occurring in the catalogue production. All deliveries made corresponding to Häfele sales conditions. Häfele reserves the right to adjust prices as may be deemed necessary.

2009. Copyright by Häfele. All rights reserved. Printed in Australia.