

LIFTRONIC

Modernisation

Upgrade your lifts and escalators to improve safety, reliability, performance, presentation & Save Energy

Property owners and managers are aware that the quality, presentation and reliable operation of lifts and escalators in high-rise buildings have a direct impact on the overall value of their investment. They are equally mindful that the safety of their passengers requires critical attention, and that it is their obligation to ensure that lifts and escalators comply with Code requirements.

“Elevate your Expectations for Creative Lift Solutions”



Liftronic Pty Limited: The largest Australian Owned Lift Company

BENEFITS OF MODERNISING YOUR VERTICAL TRANSPORT

❖ PERFORMANCE

Move passengers throughout your building with speed, safety & efficiency.

Installation of VVVF Motor controls offer:

- » Smooth acceleration and braking
- » Maintain floor level to ± 6 mm under all conditions
- » Cooler operation of motor and gear box
- » Reliability
- » Greater service ability
- » Energy savings – power reduction of 20% to 30%

Installation of Drive Systems result in:

- » Quieter operation of the machine
- » Greater reliability
- » Smoother, more comfortable ride quality



❖ AESTHETICS & APPOINTMENTS

Enhance the presentation and compliance of the lifts in your building to suit your individual needs.

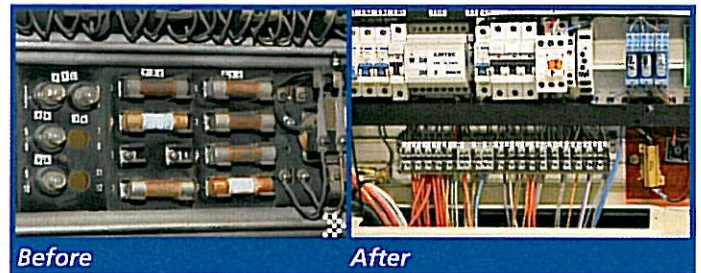
- » Wall finishes
- » Landing Indicators
- » Control stations
- » Lights
- » Ceilings
- » Disabled Compliance

❖ SAFETY

The Safety of your passengers is every building owners highest priority. Allow our team of experts to guide you through the maze of legislative requirements.

- » BCA requirements
- » OHS
- » Updated Lift Codes

These can all be addressed when you modernise your lift



Sydney | Brisbane | Melbourne | Newcastle

National: Call 1800 663922



www.liftronic.com.au