

terraçadeTM
TERRACOTTA FAÇADE SYSTEM

THE FLEXIBILITY TO INDIVIDUALIZE DESIGN

Publisher

Austral Bricks
738-780 Wallgrove Rd . Horsley Park . 2175
PO Box 6550 . Wetherill Park . NSW 1851
t: 02 9830 7700
f: 02 9831 3771
e: infonsw@australbricks.com.au
w: www.australbricks.com.au

Book Design and Layout

Brown Ink Design

Printer

Sovereign Press

Cover Image

Residence . Golden Square . Victoria
Architect: Herniman Group

Copyright © 2009. All rights reserved.

No part of this publication may be reproduced, stored
in a retrieval system or transmitted in any form by any
means, electronic, mechanical, photocopied, recording
or otherwise, without the prior written permission of the
publishers and copyright holders.

terracade[™]
TERRACOTTA FAÇADE SYSTEM

AUSTRALIA
Phone 1300 881 712
www.terracade.com.au

NEW ZEALAND
Phone 0800 287 8725
www.terracade.co.nz



Architectural innovation has never been so easy with the introduction of the Terraçade terracotta façade system from Austral Bricks. Terraçade is the long-lasting, flexible, low maintenance and environmentally sound choice in tile facades. Both commercial and custom-designed residential projects will benefit from Terraçades highly distinctive and individual finish.



ANZ

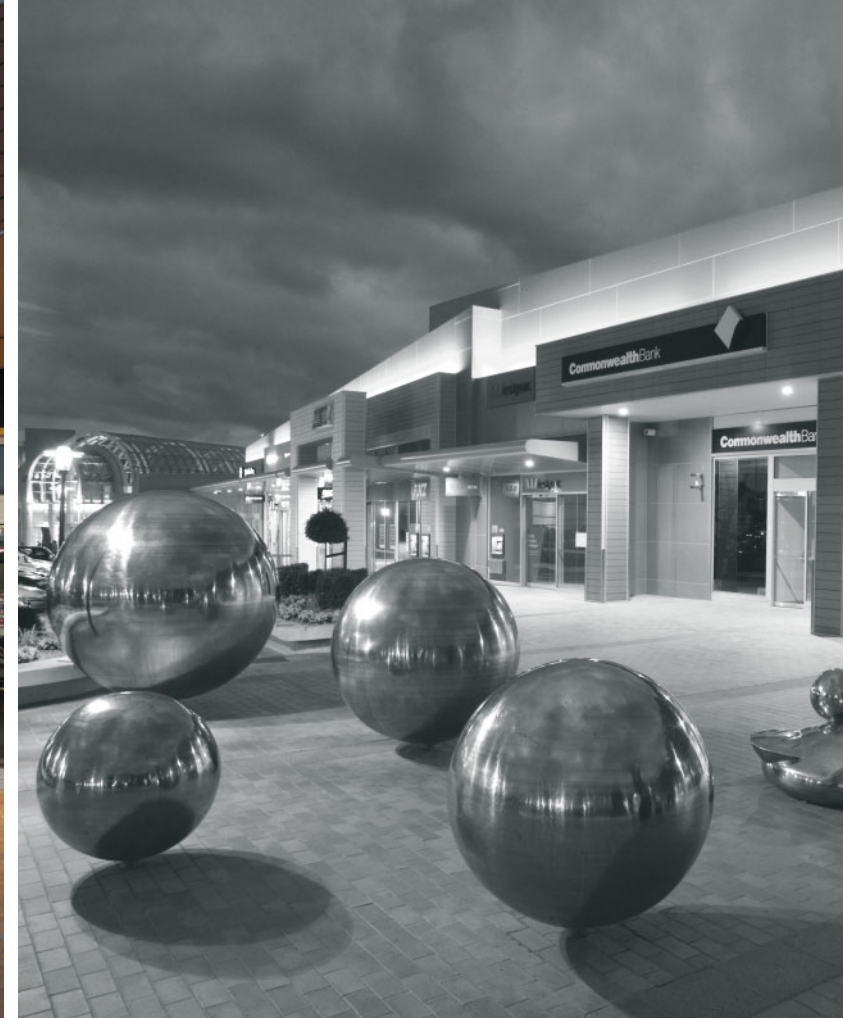
Chadstone

Talk to the
10-Year
Home Lender
of the Year.

ANZ

ANZ

ANZ



“THE VARIATION IN TEXTURE AND COLOUR ALLOWED US TO CREATE THE LOOK OF A SERIES OF INDIVIDUAL BUILDINGS ALONG THE ‘MAIN STREET’ FAÇADE.”

PROJECT: Chadstone Place . Chadstone . Victoria
ARCHITECT: The Buchan Group in conjunction with RTKL Associates, Los Angeles





PROJECT: Awapuni Function Centre . Palmerston North . New Zealand
ARCHITECT: Campbell Shadbolt Architects





PROJECT: Piermont Apartments . Wellington . New Zealand
ARCHITECT: Architecture+





PROJECT: 132 Arthur Street . North Sydney . New South Wales
ARCHITECT: Prescott Architects





PROJECT: McDonald's Restaurant . Clendon Park . New Zealand (only used by McDonald's NZ)
ARCHITECT: ASP Architects





PROJECT: Modus Apartments . Cammeray . New South Wales
ARCHITECT: Nettleton Tribe





PROJECT: ICA Casey College . Narre Warren . Victoria
ARCHITECT: TFA Architects





“THEIR HOLISTIC APPROACH TO RESEARCH FROM VINE TO WINE IS ACKNOWLEDGED
IN THE SELECTION OF TERRACOTTA FOR THE BUILDING.”

PROJECT: Wine Innovation Central Building . Urrbrae . South Australia
ARCHITECT: Hassell





PROJECT: Residence . Pelican Waters . Queensland
DESIGN: Rohrig Constructions





PROJECT: McKinnon Primary School . McKinnon . Victoria
ARCHITECT: Kneeler Design



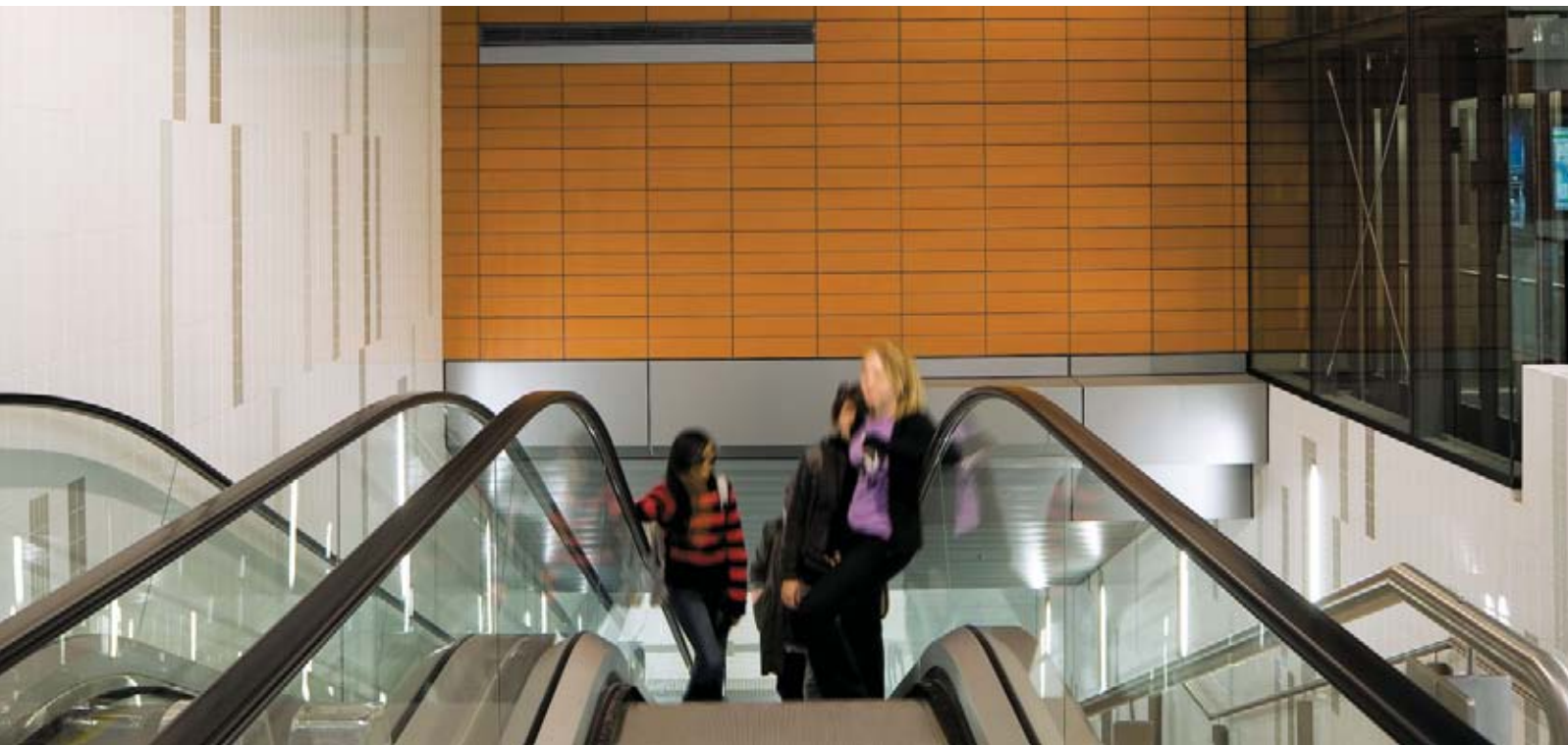
Stop
2b

No
Camera

King George Square

Map
London Underground map

TRAVELINE



“HAVING MATERIALS THAT DON’T REQUIRE FINISHING AND PAINTING ALL THE TIME IS MORE ENVIRONMENTALLY SUSTAINABLE.”

PROJECT: King George Square Station . Brisbane . Queensland
ARCHITECT: Bligh Voller Nield





“ECONOMY WAS ONE FACTOR IN THE SELECTION OF TERRAÇADE.”

PROJECT: Kolling Research and Education Building
Royal Northshore Hospital . St Leonards . New South Wales
ARCHITECT: Hassell





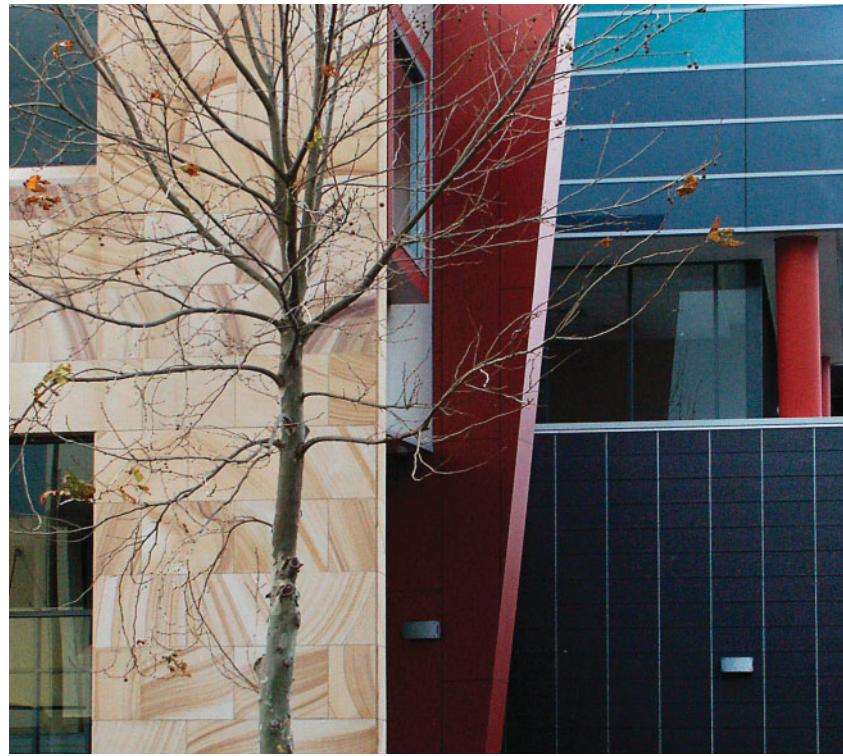
PROJECT: Essendon Fields House . Essendon . Victoria
DESIGN: Qanstruct





“IT’S IMPORTANT THAT YOU ARTICULATE THE VOLUMES, EXPRESSING THEIR RELATIONSHIPS WITH MATERIALS AND TEXTURES THAT WRAP AROUND THE BUILDING.”

PROJECT: Residence . Golden Square . Victoria
ARCHITECT: Herniman Group





PROJECT: 670 Hunter Street . Newcastle . New South Wales
ARCHITECT: Suters Architects





“THE TERRAÇADE TILES GIVE A WARMTH TO THE BUILDING, CONTRASTING WITH THE METALLIC CHARACTER OF THE LOUVRES AND THE TRANSPARENCY OF THE GLASS.”

PROJECT: Max Webber Library . Blacktown . New South Wales
ARCHITECT: Francis-Jones Morehen Thorp



PROJECT: Breeze Apartments . Victor Harbour . South Australia
ARCHITECT: Nelson Architects



PROJECT: Residence . Novena . Singapore
ARCHITECT: K2LD Architects





PROJECT: The Leisure Lounge . Sydney . New South Wales
DESIGN: Art in Green Landscape Design

CONTACT DETAILS

Australia
Phone 1300 881 712
www.terrafade.com.au

New Zealand
Phone 0800 287 8725
www.terrafade.co.nz

PROJECT INFORMATION

© 2009 All rights reserved.

Whole or partial reproduction of this publication without Austral Bricks' authorisation infringes reserved right; any utilisation must be previously requested.

Terrafade™ are registered trademarks of the Austral Brick Company Pty Ltd.
ABN 52 000 005 550

This Book has been printed on recycled, acid free paper derived from fibre from renewable forests meeting both Forest Stewardship Council (FSC).

