

# Trend thermAL®



**TREND**<sup>®</sup>  
WINDOWS  & DOORS

Energy Efficient Series

# contents

Trend® Windows & Doors	2
Energy Efficiency	3
<b>Trend thermAL® Windows</b>	
Awning	6
Casement	7
Fixed Lite	8
<b>Trend thermAL® Doors</b>	
Hinged	9
Sliding	10
Sliding Stacker	11
Bifold	12
Product Installation	13
Guarantee	13
Care & Maintenance	14



AWA Design Awards 2011  
Most Innovative Window System



HIA-CSR Hunter Housing Awards 2011  
Industry Innovation Award

Trend® National Customer Assistance Centre  
(between 8:30am - 4:30pm EST, M-F)

**13 72 74**

[www.trendwindows.com.au](http://www.trendwindows.com.au)  
email: [info@trendwindows.com.au](mailto:info@trendwindows.com.au)



NOTE: Hardware displayed in photography may vary from state to state due to supplier or availability. Trend® Windows & Doors Pty Ltd reserve the right to make changes to product(s) without notice.

# trend® windows & doors

Create a welcoming ambience and sense of style in your home with Trend® Windows & Doors.

Choose from the largest, most comprehensive range in Australia with more design and performance features than ever before.

Trend® offers experience, quality and service that you can rely on. Trend® understands that choosing the right windows and doors for your home is critical, so here are some pointers to assist you.

## Quality & Durability

Windows and doors should be strong and well made, providing you with many years of effortless performance. All Trend® windows and doors carry the Australian Window Performance label.

Trend® will inspire you with the options available and provide you with the expertise to create a perfect environment in your home.

## Design & Style

Colour, style, size and shape of windows and doors enhance the charm and character of your home, both inside and out. You can create exactly the look and feel you want for your home, with just the right amount of natural light.

## Energy Efficiency

Enhancing the comfort of your home depends significantly on the amount of ventilation and insulation provided by your windows and doors.

A cool breeze in summer is refreshing and staying warm in winter is essential. With Australia's diverse climate it is important to consider the best design options for your location and individual needs.

Trend® can offer advice on how to save money on energy costs by choosing the appropriate sash style, glass type and style for your particular climatic conditions.

## Safety & Security

Your family needs to feel safe and secure, so it is essential to use locks and frames that will deter unwanted entry and select the right type of glass.

Trend® can assist you with these decisions as Trend® products adhere to the highest standards of safety and security.

## Your Individual Needs

You may have specific needs, such as arches, glazing bars or bay windows or a specific glass or hardware type.

Trend® provides you with complete design flexibility.

## Bushfire Protection

Xtreme® bushfire protection that has been tested by CSIRO to BAL-40, which is fully compliant to AS1530.8.1 within AS3959-2009 is available.



Members of the Australian Window Association



# energy efficiency

Australia is progressing rapidly towards a more energy efficient future. To improve energy efficiency in construction, significant changes have been made to the Building Code of Australia, including the introduction of mandatory 6 star ratings for new housing.

Trend® Windows & Doors has undertaken extensive research and development to produce a more advanced and energy efficient product that enables these new building requirements to be achieved cost efficiently.

Trend thermAL® is a revolutionary hybrid window product combining the strength and security of aluminium with ERP, a new patented insulating skin. ERP is an advanced Extruded Rigid Polymer, which incorporates a number of innovative properties.

These properties include pre-stressing to eliminate expansion and contraction, UV stabilisation to protect from sun exposure and impact modification to protect against accidental damage.

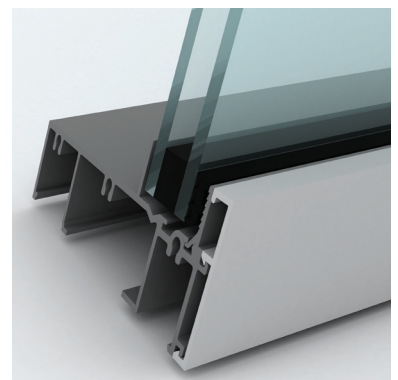
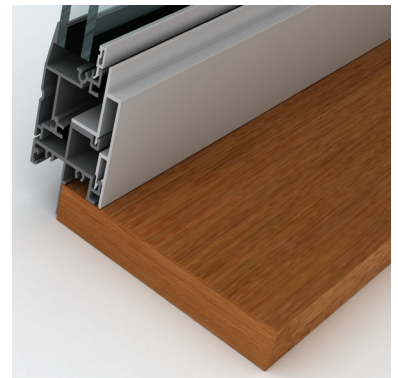
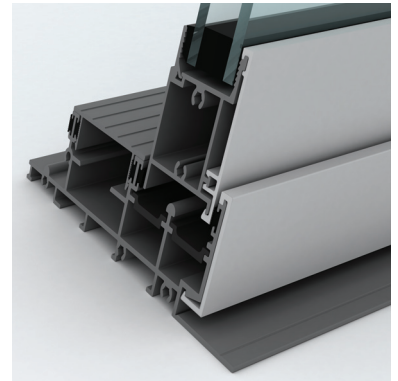
Trend thermAL® has been designed to accommodate double glazed units up to 24mm for maximum energy efficiency. With over 60 glazing options available, there is one to suit any situation or climate zone in Australia.

For design and aesthetic purposes, Trend thermAL® enables selection of a two colour option. One colour for the aluminium exterior and a separate colour for the ERP interior. The colours have been tested for non-degradation and steadfastness in order to withstand harsh climatic conditions.

This innovative feature allows for a bold exterior colour choice while a more subtle and complimentary colour can be used for the interior.

When compared with existing energy efficient window options, Trend thermAL® is a more cost effective solution by far. Trend thermAL® is available in awning, casement and fixed windows as well as sliding, sliding stacker, hinged and bifold doors.

Xtreme® Bushfire Protection is available for Trend thermAL® awning, casement and fixed windows as well as hinged and bifold doors. All of which have been tested to BAL-40 to withstand extreme temperatures of up to 40kw/m<sup>2</sup> in bushfire prone areas.





# trend thermAL®

- Designed to accommodate up to 24mm double glazed units for maximum energy efficiency.
- Over 60 different glazing options are available.
- Among the lowest U-value system (2.1) available at a much lower cost.
- Offers a wide range of SHGC ratings suitable for a range of climates (0.67-0.29).
- Aluminium exterior surface provides maximum strength and security.
- Aluminium exterior surface is available in powdercoated standard and designer colour finishes.
- ERP interior skin is available in 3 colours - White, Anodic Natural Matt and Stone Beige.
- ERP is UV stabilised to reduce heat transfer and resist harsh climates.
- ERP is impact modified to prevent accidental damage.
- ERP is pre-stressed to eliminate excessive shrinkage or expansion.
- Available in awning, casement and fixed windows.
- Available in sliding, sliding stacker, hinged and bifold doors.
- Xtreme® BAL-40 bushfire protection is available for awning, casement and fixed windows.
- Xtreme® BAL-40 bushfire protection is available for hinged and bifold doors.

### Crestlite® Fixed

Glass 6.38CP Gry  
 Cooling Imp 49%  
 Heating Imp 35%  
 U-Value 4.1  
 SHGC 0.44  
 Tvw 0.35



### Trend thermAL®

Glass 3/19/3  
 Cooling Imp 34%  
 Heating Imp 56%  
 U-Value 3.1  
 SHGC 0.67  
 Tvw 0.71



### Trend thermAL®

Glass 6CSNtrl/12Ar/638CPNtrl  
 Cooling Imp 64%  
 Heating Imp 52%  
 U-Value 2.1  
 SHGC 0.36  
 Tvw 0.32

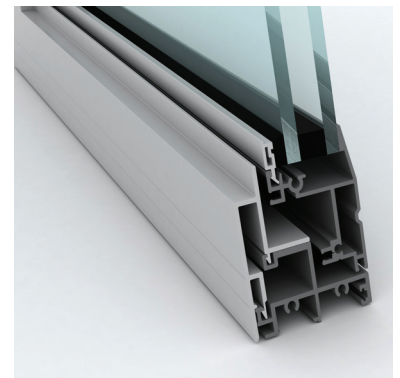
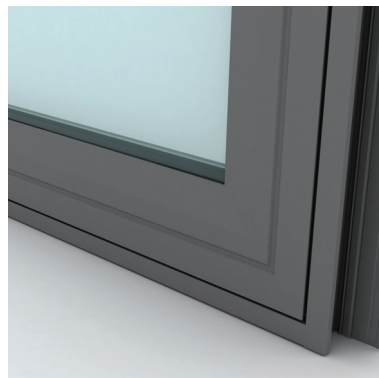




# awning window

U-Value down to 2.5  
SHGC range of 0.53-0.27  
Cooling Efficiency 67%  
Heating Efficiency 72%

- 1 Key Lock Scissor Winder
  - Secura hardware is available in powdercoat finishes with optional stainless steel stay mechanism.
  - Restricted openers to 100mm are available for safety options.
  - Key lock is supplied as standard.
- 2 Sizes
  - Maximum size is 2100mm(h) x 910mm(w).
  - Minimum size is 520mm(h) x 520mm(w).
- 3 Window Placement
  - Care should be taken with locating opening awning windows in pedestrian traffic areas.
- 4 Options
  - Easy-to-fit flyscreens can be fitted and removed from the inside.
  - Xtreme® BAL-40 bushfire protection is available.





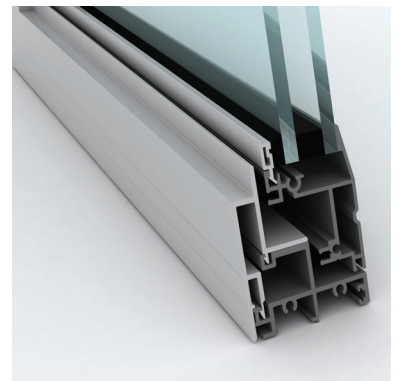
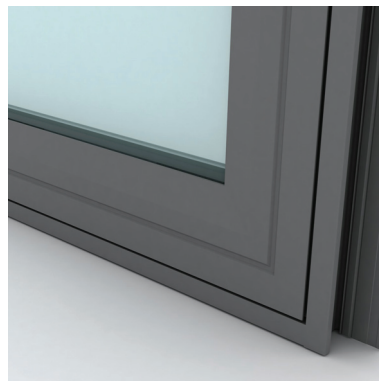
# casement window

**U-Value down to 2.6**  
**SHGC range of 0.53-0.27**  
**Cooling Efficiency 67%**  
**Heating Efficiency 72%**

- 1 Key Lock Scissor Winder
  - Secura hardware is available in powdercoat finishes with optional stainless steel stay mechanism.
  - Restricted openers to 100mm are available for safety options.
  - Key lock supplied as standard.
- 2 Sizes

Maximum size is 2100mm(h) x 720mm(w).  
Minimum size is 600mm(h) x 600mm(w).
- 3 Window Placement

Care should be taken with locating opening casement windows in pedestrian traffic areas.
- 4 Options
  - Easy-to-fit flyscreens can be fitted and removed from the inside.
  - Xtreme® BAL-40 bushfire protection is available.



# fixed-lite window

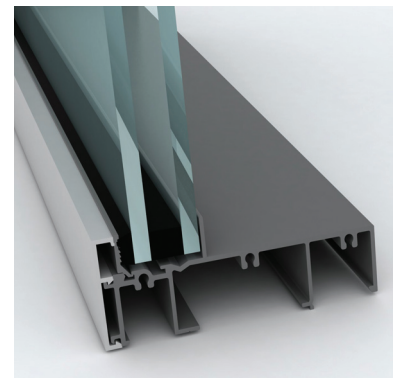
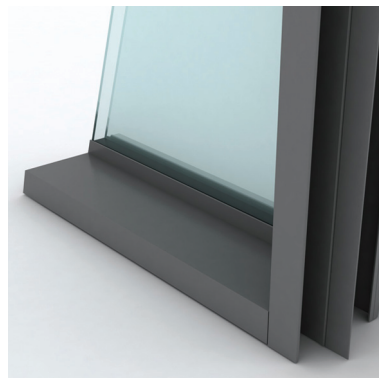
U-Value down to 2.1  
SHGC range of 0.67-0.34  
Cooling Efficiency 64%  
Heating Efficiency 63%

1 Framing

Trend thermAL® internal offset framing offers a commercial look for apartments, high-end residential properties or anywhere a commercial frame is required. This robust frame allows for large fixed-lite applications with greater viewing areas of up to 4m<sup>2</sup>.

2 Options

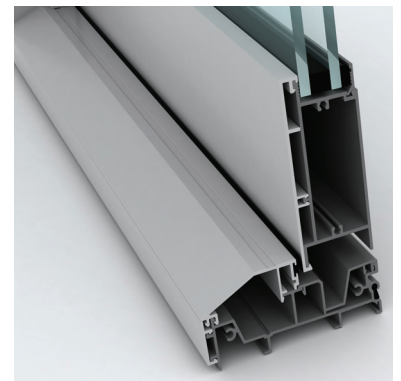
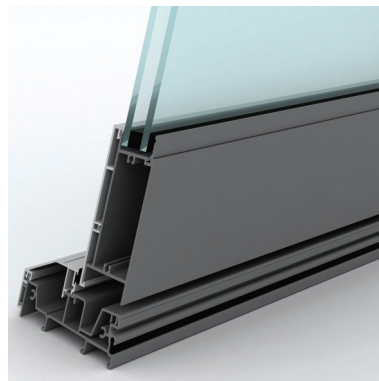
- Xtreme® BAL-40 bushfire protection is available.



# hinged door

**U-Value down to 2.5**  
**SHGC range of 0.53-0.30**  
**Cooling Efficiency 64%**  
**Heating Efficiency 63%**

- 1 Locks  
Trend thermAL® hinged doors are fitted with a 3 point patio deadlock.
- 2 Hinges  
The door is hung on offset fast-fix hinges to eliminate binding. It can also be supplied with parliament hinges, where the door swings out flush to brickwork.
- 3 Frames  
Maximum door height 2400mm.  
Maximum door width 980mm.
- 4 Direction of Opening  
Available open in or open out.
- 5 Safety Glazing  
Toughened Safety A Grade glass with a visual motif at mid-point provided.
- 6 Options
  - Flyscreen door is available.
  - Side-lites and high-lites available.
  - Xtreme® BAL-40 bushfire protection is available.

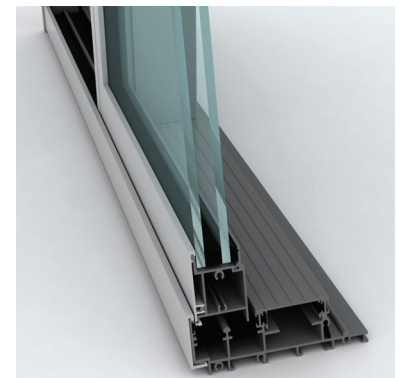
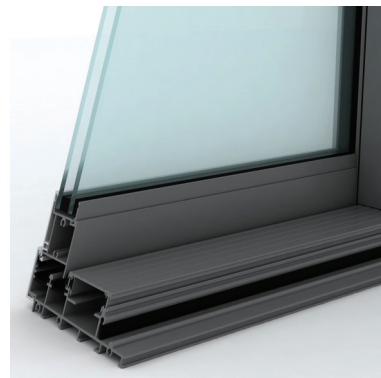




# sliding door

**U-Value down to 2.3**  
**SHGC range of 0.65-0.33**  
**Cooling Efficiency 63%**  
**Heating Efficiency 58%**

- 1 Locks  
Trend thermAL® sliding doors are fitted with double cylinder deadlock as standard and a double parrot beak with a 2 point locking system. Striker plate is mounted with full fixing to jamb.
- 2 Heavy Duty Rollers  
Sliding doors are fitted with heavy duty, double bogey, roller systems for smooth operation.
- 3 Frames  
Maximum door height 2400mm.  
Maximum door width 1200mm.
- 4 Safety Glazing  
Toughened Safety A Grade glass with a visual motif at mid-point provided.
- 5 Screen Door  
An external extruded aluminium sliding screen door can be fitted with spring loaded acetal wheels. Ensuring the screen door stays on the track and operates smoothly.
- 6 Options
  - Bushfire protection up to BAL-29.

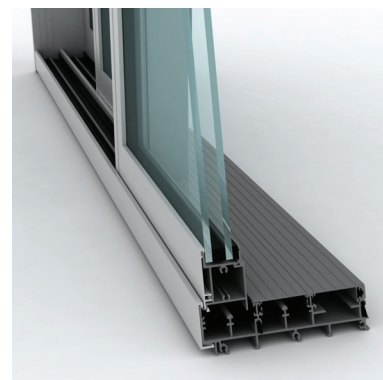
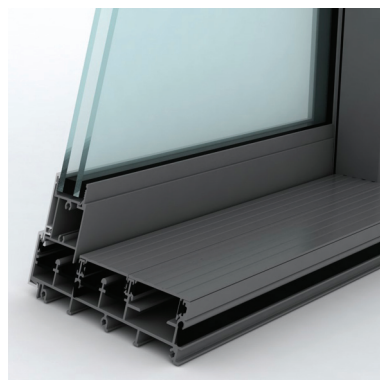


# sliding stacker door

**Trend**  
thermAL®

U-Value down to 2.3  
SHGC range of 0.65-0.33  
Cooling Efficiency 63%  
Heating Efficiency 58%

- 1 Locks  
Trend thermAL® stacker doors are fitted with double cylinder deadlock as standard and has a double parrot beak with a 2 point locking system.
- 2 Safety Glazing  
Toughened Safety A Grade glass with a visual motif at mid-point provided.
- 3 Heavy Duty Rollers  
Sliding doors are fitted with heavy duty, double bogey, roller systems for smooth operation. The marine alloy aluminium carriage reduces the chance of corrosion.
- 4 Frames  
Maximum door height 2400mm.  
Maximum door width 1200mm.
- 5 Screen Door  
An external extruded aluminium sliding screen door can be fitted with spring loaded acetal wheels. Ensuring the screen door stays on the track and operates smoothly.
- 6 Options
  - Bushfire protection up to BAL-29.



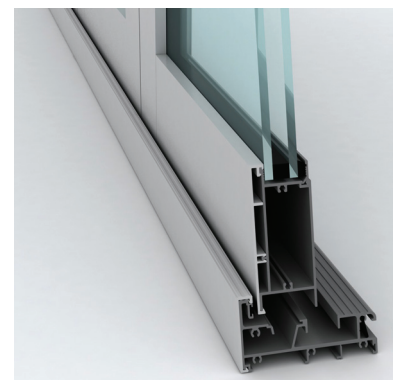
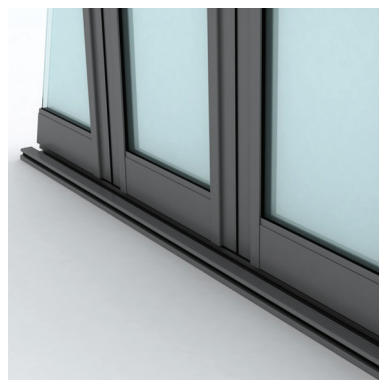


# bifold door

U-Value down to 2.3  
 SHGC range of 0.65-0.33  
 Cooling Efficiency 63%  
 Heating Efficiency 58%

- 1 Hardware  
 Stainless steel hardware is provided as standard. Door hardware, hinges and drop bolts are available in two finishes, stainless steel and black powdercoat.
- 2 Safety Glazing  
 Toughened Safety A Grade glass with a visual motif at mid-point provided.
- 3 Frames  
 Maximum frame height is 2700mm.  
 Maximum frame width is 6062mm.  
 Maximum door leaf size is 870mm.  
 Maximum weight in one direction is 180kg.
- 4 Options
  - Xtreme® BAL-40 bushfire protection is available.

NOTE: Available open out only.





## trend<sup>®</sup> guarantee

- (a) The following statement only applies to a consumer sale of goods or services as defined in the Australian Consumer Law:
- (i) Our Goods come with guarantees that cannot be excluded under the Australian Consumer Law. You are entitled to a replacement or refund for a major failure and for compensation for any other reasonably foreseeable loss or damage. You are also entitled to have the Goods repaired or replaced if the Goods fail to be of acceptable quality and the failure does not amount to a major failure.
- (b) Trend guarantees the Goods supplied will be free against defects arising from faulty workmanship or materials for a period of seven (7) years (one (1) year for Goods considered by Trend<sup>®</sup> as moving parts) from date of delivery and guarantees that services will be rendered with due care and skill. The guarantees are subject to the following conditions being complied with by the Customer:
- (i) The Goods are installed (where Goods are not installed by Trend<sup>®</sup> and maintained in accordance with the manufacturer's recommendations (refer to Trend<sup>®</sup>'s Installation Guide and Care and Maintenance Guide, available at [www.trendwindows.com.au](http://www.trendwindows.com.au) or from Trend<sup>®</sup>'s Sales offices) and has not been subject to misuse, abuse or neglect;
- (ii) Timber Goods are sealed (within one (1) month of delivery) with two coats of paint, varnish or sealer to both faces and edges including top and bottom. Exterior quality finishes in light reflective colours (NOT dark colours) must be applied to all Goods exposed to direct sunlight or the elements;
- (iii) All solid construction timber doors are hung with three (3) 100mm hinges;
- (iv) A warp in a door will not be considered a defect unless it exceeds 4mm for doors up to 2,150mm high, 6mm for door heights between 2,150mm and 2,400mm and 7mm for door heights above 2,400mm;
- (v) Aluminium product surfaces that have been treated with a powdercoat finish provide a much higher resistance to scratching or scuffing and protect against normal weather conditions. However Trend<sup>®</sup> does not warrant against fading or colour change due to normal weather conditions that will cause any coloured surface to fade or darken gradually.
- (c) Notwithstanding clause 9(a), the liability of Trend<sup>®</sup> in respect of a breach of a consumer guarantee or any warranty made under these Terms and Conditions for any Goods not of a kind ordinarily acquired for personal, domestic or household use is limited, to the extent permitted by law and at the option of Trend<sup>®</sup> to:
- (i) in the case of supply of Goods;
- (A) replacing the Goods or the supply of equivalent Goods;
- (B) the repair of the Goods;
- (C) the payment of the cost of replacing the Goods or of acquiring equivalent Goods; or
- (D) the payment of the cost of having the Goods repaired.
- (ii) in the case of supply of Services;
- (A) the supplying of the Services again; or
- (B) the payment of the cost of having the Services supplied again.
- (d) To the extent permitted by law, all other warranties whether implied or otherwise, not set out in these Terms and Conditions are excluded and Trend<sup>®</sup> is not liable in contract, tort (including, without limitation, negligence or breach of statutory duty) or otherwise to compensate the Customer for:
- (i) any increased costs or expenses;
- (ii) any loss of profit, revenue, business, contracts or anticipated savings;
- (iii) any loss or expense resulting from a claim by a third party; or
- (iv) any special, indirect or consequential loss or damage of any nature whatsoever caused by Trend<sup>®</sup>'s failure to complete or delay in completing the order to deliver the Goods.
- (e) To claim the warranty provided under this clause, the Customer must, within 7 days of identifying the defect in the Goods, provide written notice of the defect to the supplier from whom the Goods were purchased or to the nearest Trend<sup>®</sup> location listed on the Trend<sup>®</sup> website.
- (f) Where Trend<sup>®</sup> determines that the Customer is entitled to the warranty under this clause and the Goods have not been affixed to property to the extent that Trend<sup>®</sup> cannot easily remove the Goods from the property, Trend<sup>®</sup> agrees to bear the cost of claiming the warranty.
- (g) The benefits provided to the Customer by the warranty are in addition to other rights and remedies available to the Customer under the law.

## installation instructions

- Fit flashing to window surround as required.
  - Frame must be packed plumb, square and not twisted between the opening. Ensure the sill is fully supported, failure to do so may result in sill roll on windows.
  - Secure aluminium windows by nailing through reveal. Timber windows should be secured by back nailing through stud, not face of frame to stud. Alternatively, on cavity brick construction use galvanised building lugs located at 450mm maximum centres.
  - Keep sash closed whilst installing frames.
  - Sill bricks should be at least 15mm clear of window frame to allow for settlement.
  - Do not stand on the windows, or use them as a support for scaffolding, or slide material through the frame.
  - Do not permit weight of eaves or arch bars to bear on aluminium or timber frames.
  - Remove cement mortar dropping from windows immediately, taking care to avoid scratching glass and frames, as permanent damage can result.
  - Timber windows should have a first coat of an appropriate paint, oil or stain applied within thirty (30) days of delivery. Do not paint timber in dark colours. Prior to sealing, avoid placing timber near gum trees, sawdust and metal filings, as staining may occur.
- No guarantee will be given if timber or aluminium painted surfaces come into contact with acid when cleaning brickwork.

## care & maintenance

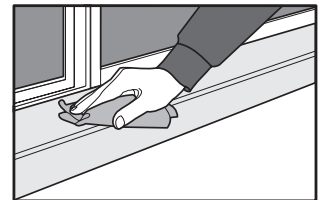
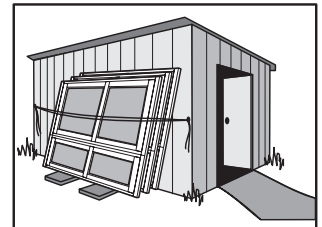
On site, windows and doors should be stored in a clean dry area free from cement, lime, paint, acid etc.

During installation they must be protected from building fall-out such as wet plaster, mortar, paint and welding splatter. Remove wet plaster, cement, mortar and other droppings immediately, using ample clean water and a sponge or rag, to avoid permanent staining or scratching of finished surfaces.

If removal is delayed and scraping becomes necessary the surface finish may suffer. Door tracks and window sills should be protected from planks, scaffolding and barrows, and kept clean of grit and dirt.

Acid used for cleaning brickwork must be prevented from dripping onto aluminium or timber surfaces. Should this fail the acid must be immediately washed off with ample clean water.

If stripable coatings or pressure sensitive tapes are used to protect exposed surfaces, care must be taken not to damage the finish during their removal. Prolonged exposure to sunlight can make them increasingly difficult to remove.



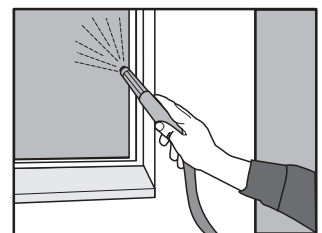
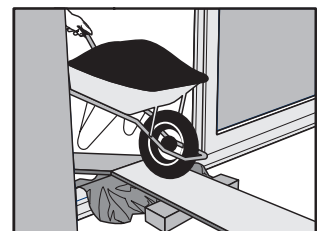
## maintenance conditions

1. All powdercoated surfaces should be cleaned using a soft cloth or sponge with a solution of warm water.

Where the atmosphere is deemed to be non-hazardous eg. rural, the period between cleaning frequency can be extended up to twelve (12) months.

In industrial environments or environments with atmospheric pollution the normal frequency of cleaning should be at not more than three (3) monthly intervals. However, where there is high atmospheric pollution, such as a marine/coastal environment, cleaning should be conducted at monthly intervals.

2. Remove cement mortar dropping from windows immediately, taking care to avoid scratching glass and frames, as permanent damage can result. Trend® Windows & Doors will not be liable for any damage that may occur if the timber or aluminium painted surfaces come into contact with acid when cleaning brickwork.
3. Timber products **MUST BE** sealed (within one (1) month of delivery) with two coats of paint, varnish or sealer to both faces and edges including top and bottom. Exterior quality finishes in light reflective colours (not DARK colours) must be applied to all products exposed to direct sunlight or the elements.



# contact

## SYDNEY

44-52 Mandoon Road,  
Girraween, NSW 2145  
Tel: (02) 9840 2000  
Fax: (02) 9840 2100

3/384 Eastern Valley Way,  
Chatswood, NSW 2067  
Tel: (02) 9882 1155  
Fax: (02) 9882 1566

## WOLLONGONG

Tel: (02) 4256 1966  
Fax: (02) 4256 3863

## NOWRA

Unit 1A, 175 Princes Highway,  
South Nowra, NSW 2541  
Tel: (02) 4423 1500  
Fax: (02) 4423 5100

## NEWCASTLE

56-60 Munibung Road,  
Cardiff, NSW 2285  
Tel: (02) 4956 7139  
Fax: (02) 4956 9146

## DUBBO

1/55 Douglas Mawson Drive,  
Dubbo, NSW 2830  
Tel: (02) 6884 4055  
Fax: (02) 6884 4057

## OURIMBAH

5 Catamaran Road,  
Ourimbah, NSW 2258  
Tel: (02) 4389 1402  
Fax: (02) 4389 8460

## PORT MACQUARIE

5 Merrigal Road,  
Port Macquarie, NSW 2444  
Tel: (02) 6581 5100  
Fax: (02) 6581 4056

## TAMWORTH

7-11 Hume Street,  
Tamworth, NSW 2340  
Tel: (02) 6765 4066  
Fax: (02) 6765 2584

## ACT

74 Sheppard Street,  
Hume, ACT 2620  
Tel: (02) 6260 1266  
Fax: (02) 6260 1381

## TASMANIA

GP Glass  
26 Loone Lane,  
Spreyton, TAS 7310  
Tel: (03) 6427 3166  
Fax: (03) 6427 3161

## MELBOURNE

92 Canterbury Road,  
Bayswater North, VIC 3153  
Tel: (03) 9751 7000  
Fax: (03) 9751 7010

192 Burwood Road,  
Hawthorn, VIC 3122  
Tel: (03) 9214 4000  
Fax: (03) 9214 4040

Seaford, VIC 3198  
Tel: (03) 9770 8888  
Fax: (03) 9775 1811

## REGIONAL MELBOURNE

72-74 Main Road,  
Ballarat, VIC 3350  
Tel: (03) 5338 7837  
Fax: (03) 5331 3335

Geelong, VIC 3220  
Mob: 0418 522 515  
Fax: (03) 5261 4234

## ADELAIDE

15-17 Indama Street,  
Regency Park, SA 5010  
Tel: (08) 8347 0866  
Fax: (08) 8347 0522

## SUNSHINE COAST

27-43 Skyreach Street,  
Caboolture, QLD 4510  
Tel: (07) 5428 9200  
Fax: (07) 5428 9222

## GOLD COAST

134 Lahrs Road,  
Ormeau, QLD 4208  
Tel: (07) 5549 4100  
Fax: (07) 5549 4111

## HERVEY BAY

6 Miller Street,  
Urangan, QLD 4655  
Tel: (07) 4125 3188  
Fax: (07) 4125 2188

PRODUCTS NOT AVAILABLE IN WA

## Trend® National Customer Assistance Centre

(between 8:30am - 4:30pm EST, M-F)

# 13 72 74

[www.trendwindows.com.au](http://www.trendwindows.com.au)

email: [info@trendwindows.com.au](mailto:info@trendwindows.com.au)