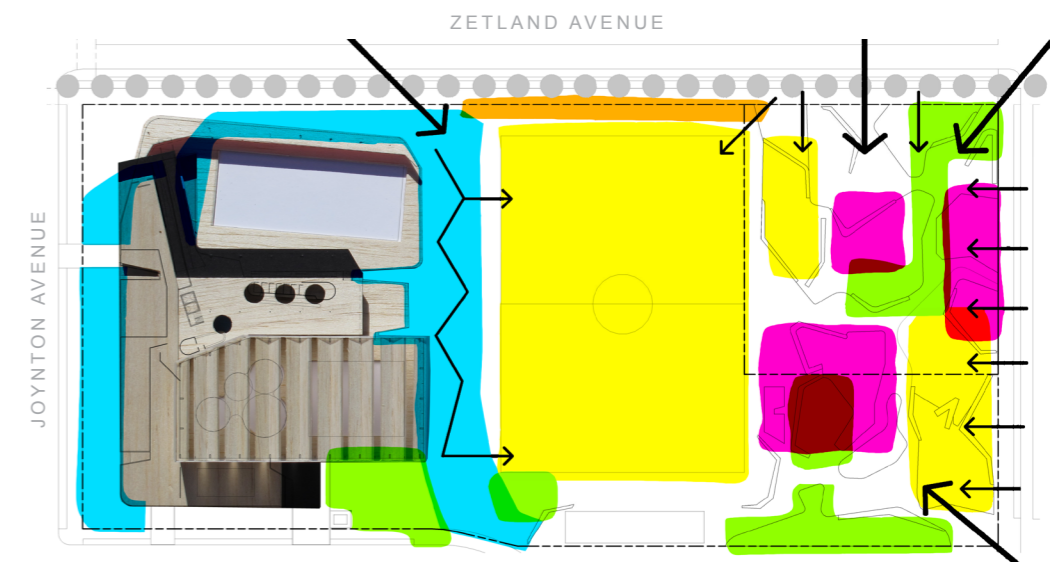
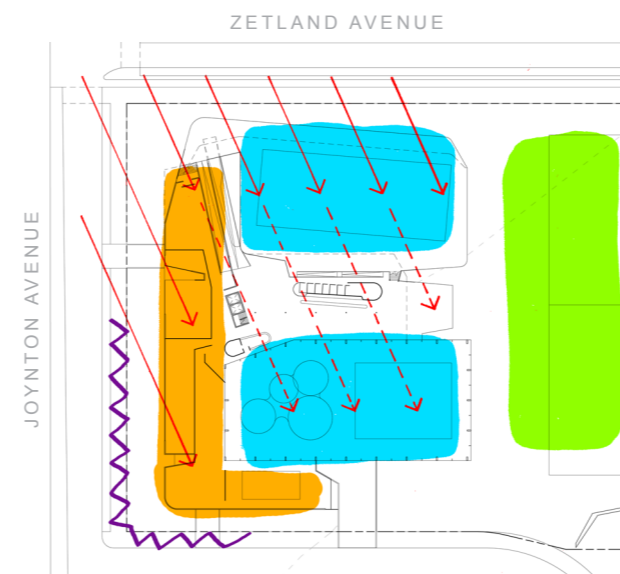
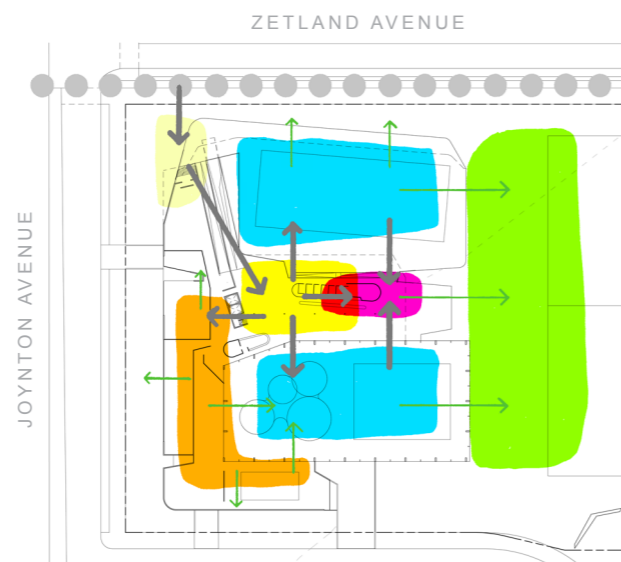
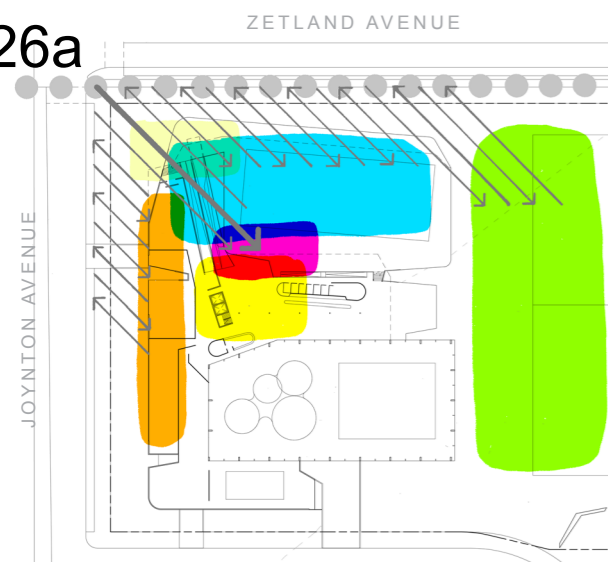


126a



ACTIVATION / ARRIVAL / LEVELS

The Outdoor Pool and Concourse creates a key transparent and active frontage to Zetland Avenue openly displaying the essence of the Aquatic Centre – Recreation and Health. The arrival forecourt is punctuated by the forceful yet gentle entry walkway that guides people to the main floor plate of the centre, with the journey presenting growing glimpses of the Outdoor Pool on a slightly higher floor plate and the activity of the Dry Café Terrace. A striking garden of slender Cabbage Tree Palms and a Greenwall wrapping the pool end into the café create a lush and calming backdrop to the crisp architectural lines. Window slots from the Health and Fitness floor plate activate Joynton Avenue and Rose Valley Way street frontages.

ARRANGEMENT / CONNECTIONS / OUTLOOK

With the Foyer located in the centre of the facility access to all key components is achieved from one hub. The Foyer blends with the Dry Café and its own terrace. The Wet Café links both pools and combines with the Outdoor Terrace overlooking the park. The design achieves outlook to the park from every component. The Health and Fitness centre wraps around the Pool and Leisure Hall inviting a dynamic outlook to the indoor pools, park beyond, entry walkway and Outdoor Pool, with views to the street frontages on its other sides.

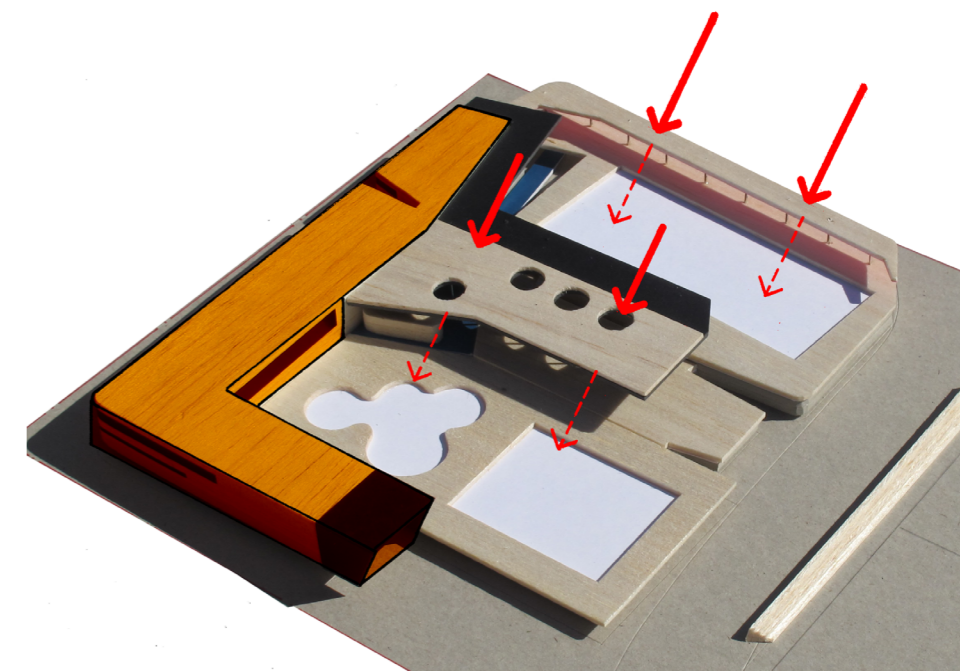
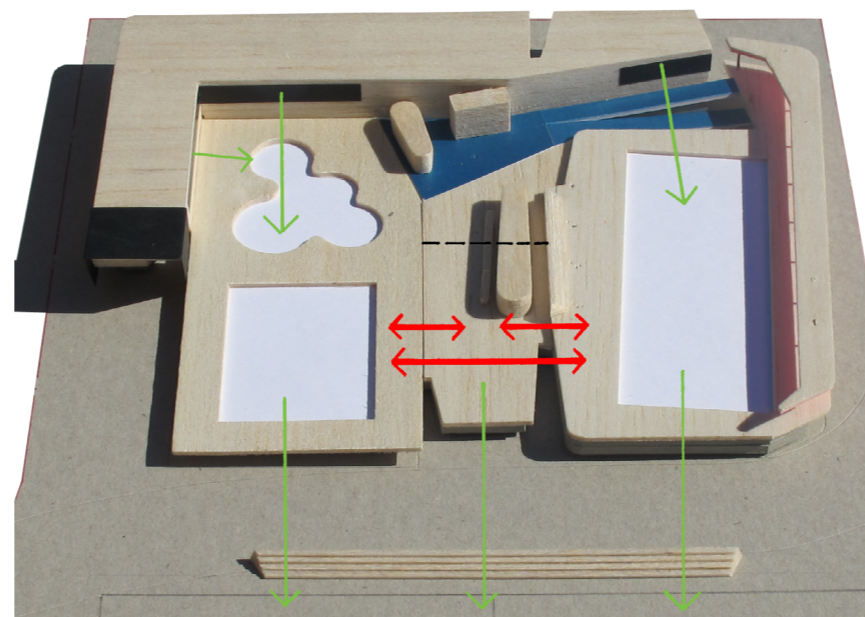
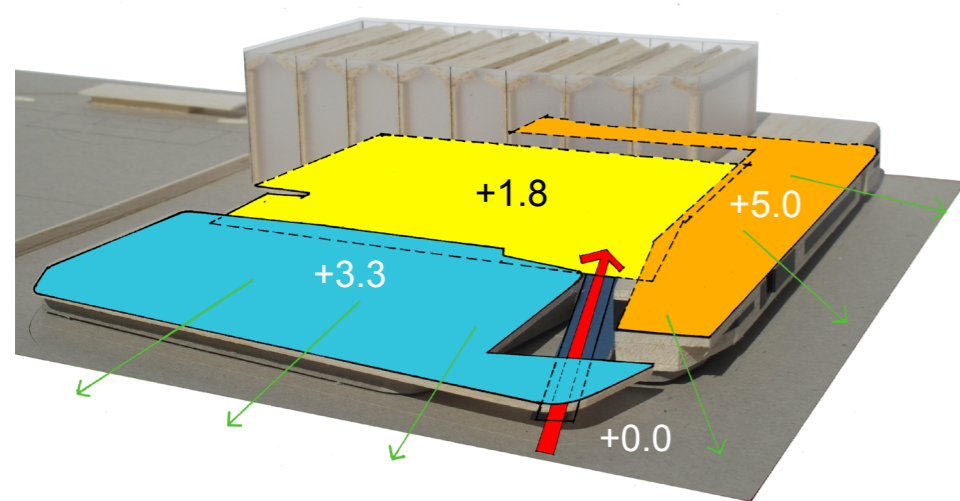
SOLAR / PROTECTION / ESD

The Outdoor Pool is located on the northern side of the site to achieve unimpeded and controllable solar access. A Brise-Soleil provides shading to the pool concourse and a large eave provides shade to the spectator seating area and Pool and Leisure Hall. Natural ventilation and exhaust to the high Pool Hall add to the passive solar design with additional active measures to be implemented to efficiently use energy, materials and water. Extensive raingardens surround the building. The Health and Fitness Centre wraps around the West and South faces, resisting aggressive external impacts from these aspects, protecting the pools from cold south westerly winds and traffic noise, and the Pool Hall from low western sun. In contrast the North and East faces present a more open, outwardly transparent presence.

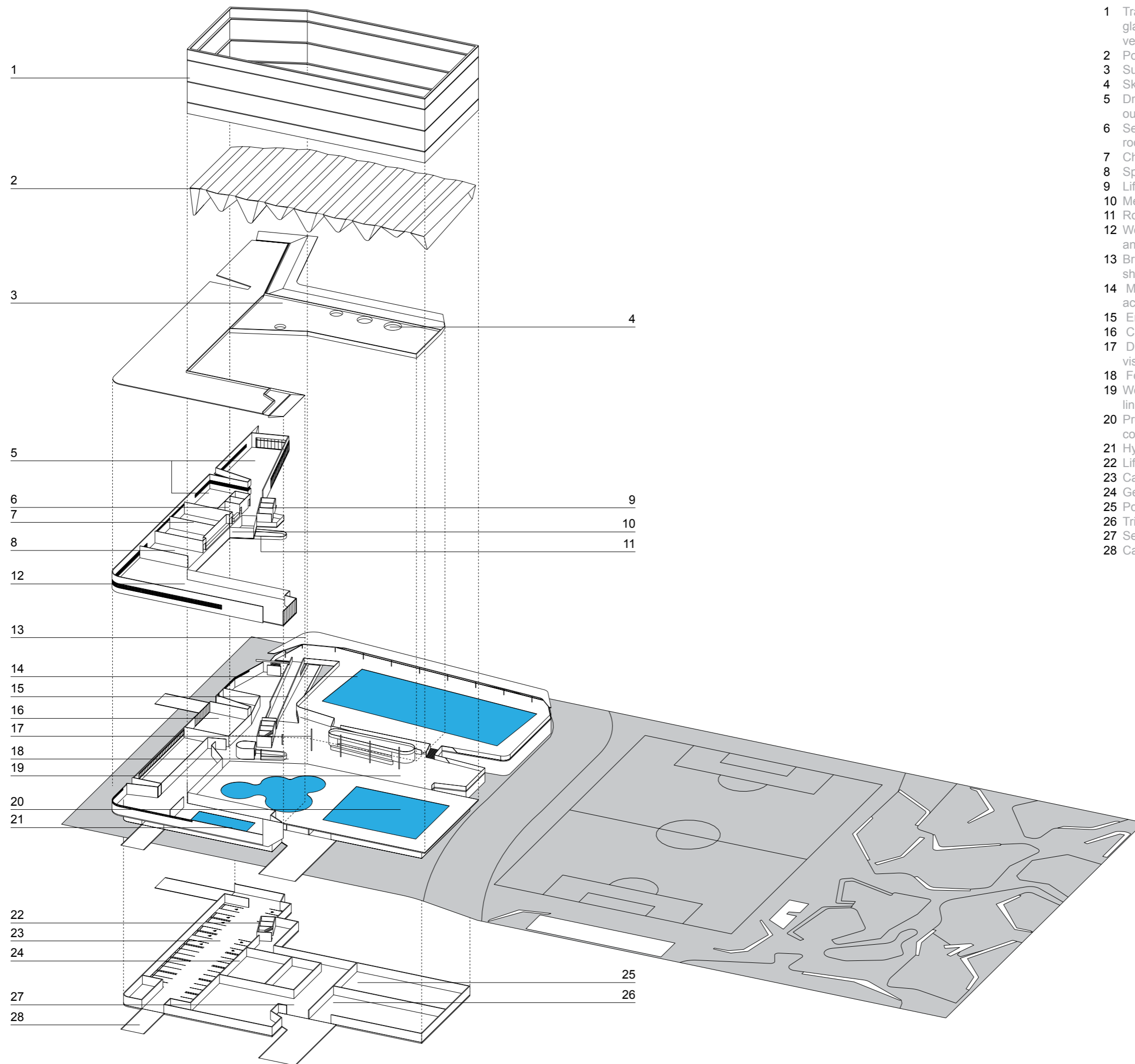
LANDSCAPE

The landscape design reverts both the recent and ancient history of its location and surrounds. By peeling back existing layers of concrete and asphalt the original wetlands below will be allowed to rejuvenate. The existing fabric is used to help build the new park. Gabion retaining walls back filled with plates of asphalt are a feature of the park. These forms will embrace the new landscape. The board walks through wetland planting allow an experience of the site's ancient landscape. The park allows you to explore physical endeavours, social interactions and quiet moments in the forest.

- active recreation
- buffer wall
- forest
- rain gardens
- passive recreation
- primary access
- secondary access

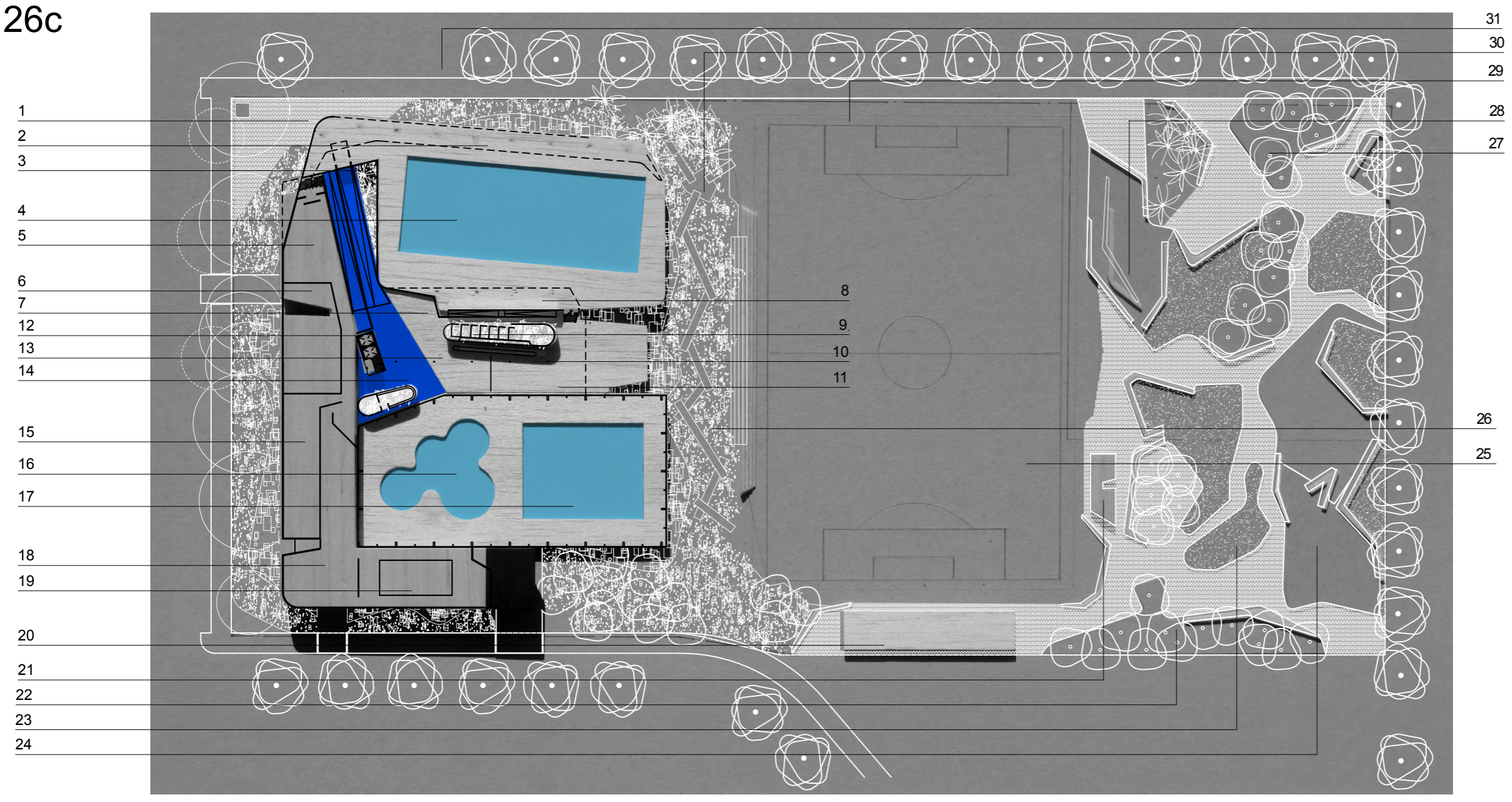


126b

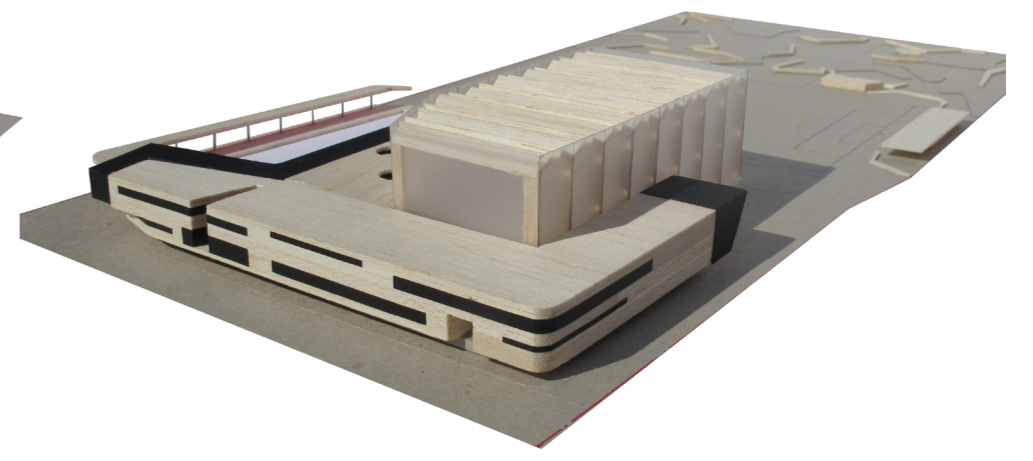
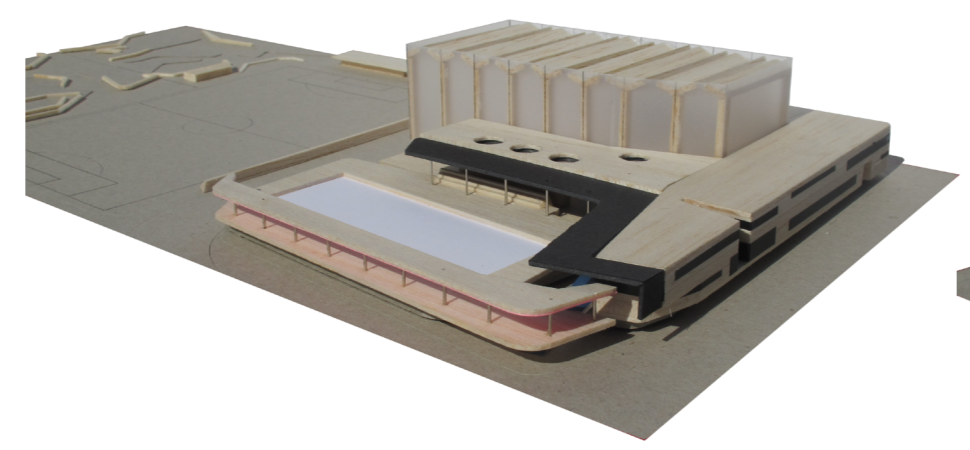


- 1 Translucent pool hall shell high performance u glass modulated with opening panels for natural ventilation
- 2 Pool Hall ceiling
- 3 Sunshade awning
- 4 Skylights to cafe rooftop garden
- 5 Dry Fitness Studios overlook entry walkway outdoor pool and street frontages
- 6 Secondary reception / manager / and consultant rooms
- 7 Changerooms
- 8 Spin Room
- 9 Lifts and stair
- 10 Meeting room
- 11 Rooftop garden over reception
- 12 Weights / cardio with outlook to pool leisure hall and street frontages
- 13 Brise Soleil - Off-form concrete fine lined fluid shape structure to pool concourse
- 14 Main pool northern aspect visual concourse activating entry and street views to park
- 15 Entry walkway and walkway to main pool
- 16 Creche
- 17 Dry Cafe terrace activating entry north light and visual link to main pool
- 18 Foyer / reception
- 19 Wet cafe lounge and outdoor terrace directly linking with outdoor pool and leisure hall
- 20 Program pool with outlook to park and direct connection to cafe wet lounge and terrace
- 21 Hydrotherapy pool
- 22 Lifts and stair
- 23 Carpark - accessible parking adjacent lift core
- 24 General plant stores and garbage room
- 25 Pool plant
- 26 Trigeration plant
- 27 Service dock
- 28 Carpark entry

126c



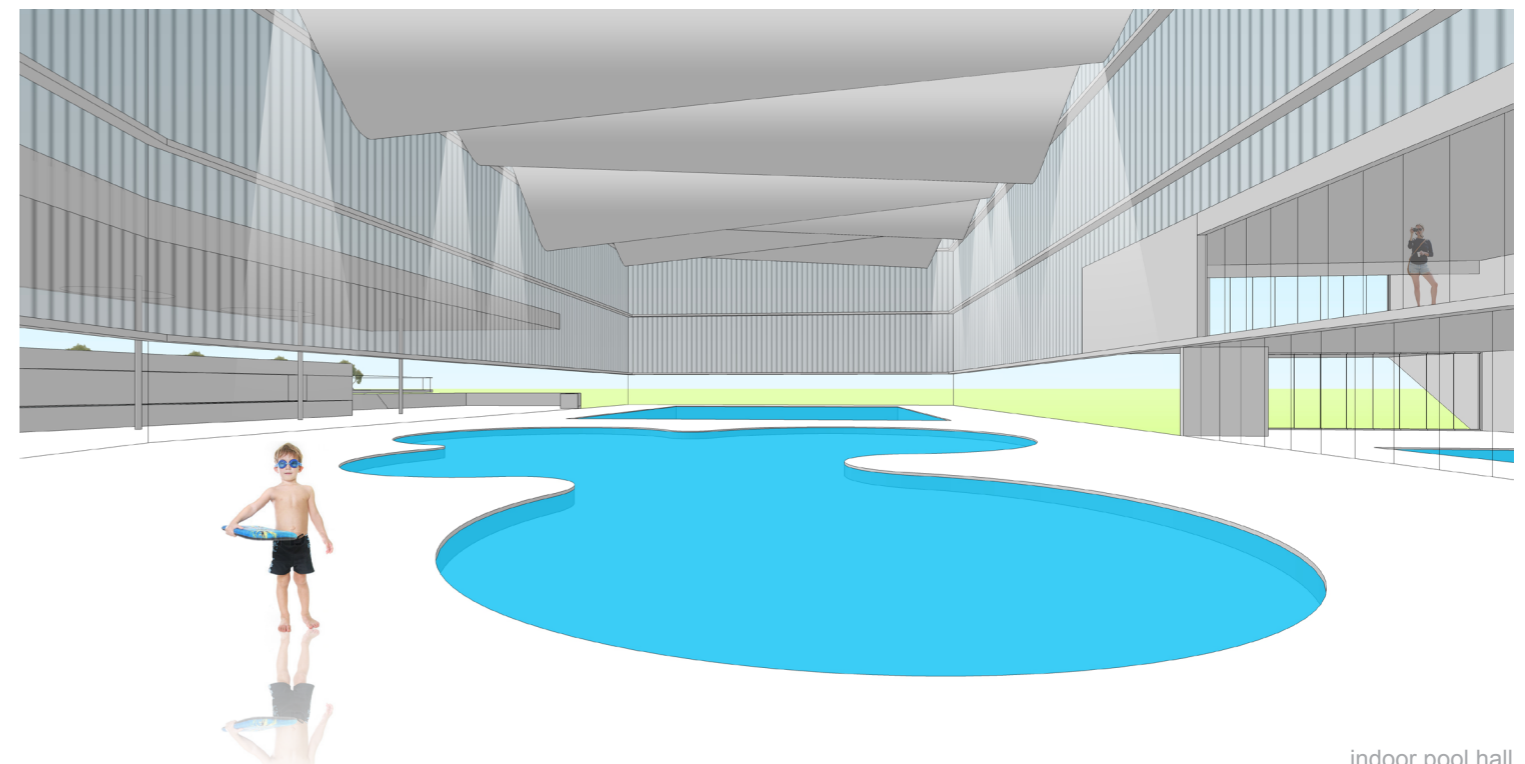
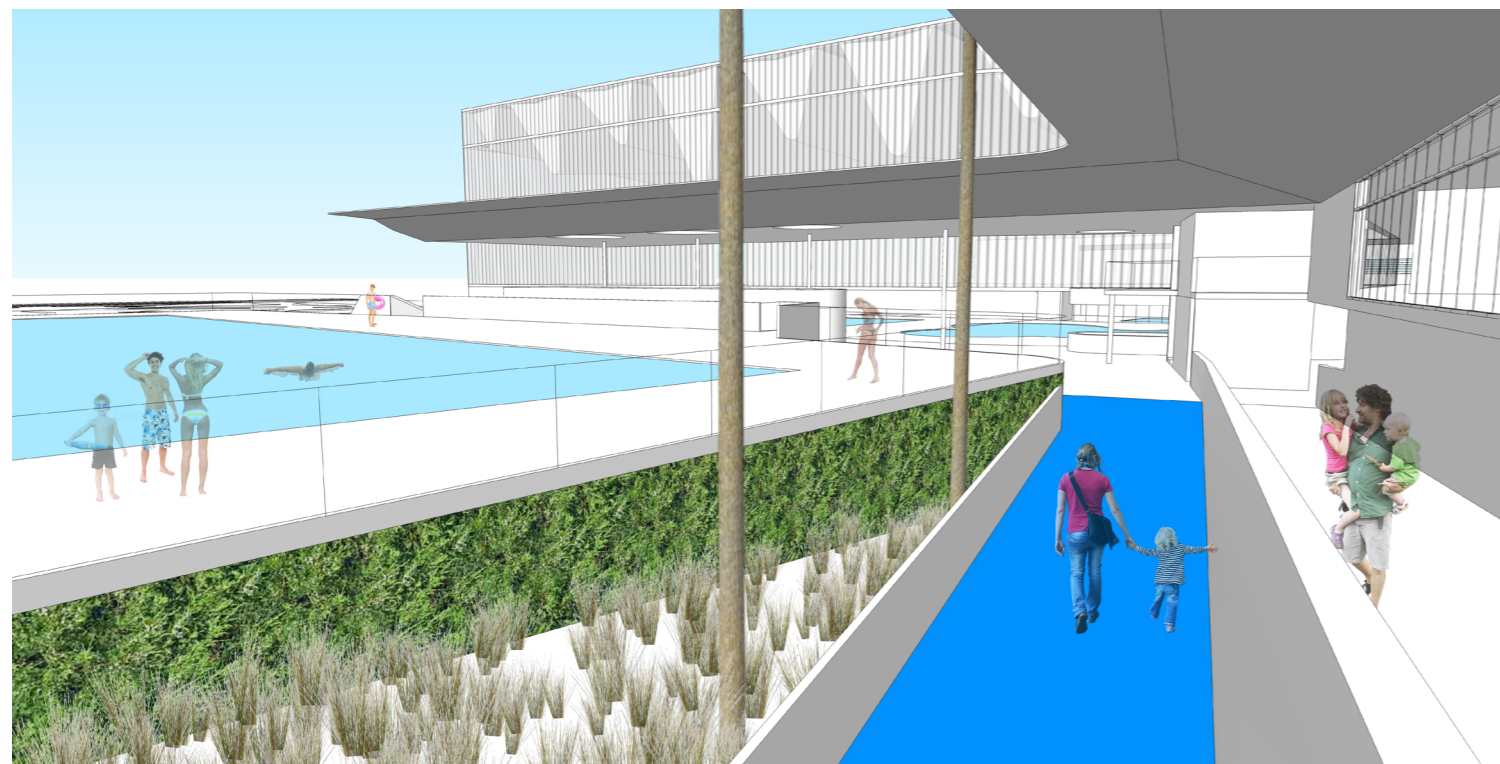
- 1 Forecourt
- 2 Concourse
- 3 Walkways
- 4 Outdoor pool
- 5 Wet change
- 6 Creche / outdoor play/shared use.
- 7 Cafe dry terrace
- 8 Spectator seating
- 9 Toilets
- 10 Cafe / kiosk
- 11 Cafe wet lounge / terrace
- 12 Lift / stair
- 13 Cafe dry lounge
- 14 Reception / foyer
- 15 Administration
- 16 Leisure water area
- 17 Program pool
- 18 Wet change / assisted change / Hydrotherapy changerooms / support / store
- 19 Hydrotherapy pool
- 20 Toilets / field amenities
- 21 BBQ facilities
- 22 Forest
- 23 Lawns
- 24 Kids play area
- 25 Multipurpose field
- 26 Spectator seating
- 27 Forest
- 28 Skateable moments
- 29 Boardwalk wall buffer
- 30 Demountable boardwalk
- 31 Bus drop off





view from corner of zetland and joynton avenues

view from outdoor pool terrace to entry walkway



indoor pool hall