

**The Features**

**Profile System**

- Panel thickness 59mm, 24mm thermal break
- Narrow frames and panel profiles (panel joint 130mm)
- High stability due to tongue and groove interlocking panel profile and robust corner joints with thermal break
- Flush floor track without upstand for disabled access available
- Sealed against wind and rain by double wraparound seal

**Standard Door System**

- Complete window system to match the folding facade is available: tilt and turn, parallel slide and tilt, fixed panels

**Fittings**

- No protruding runner and guide tracks
- Concealed fittings for one handed operation
- Lockable in any partly open position

**Glazing**

- Heat - insulating glass as standard  
 $U_g = 1.1 \text{ W/m}^2 \text{ (k = 1.0)}$  with 2 x 4 mm toughened glass
- Glass thicknesses from 5 to 40mm available

**Surface Finish**

- Powder coating
- Anodised aluminium

**U - value**

- $U_w = 1.7 \text{ W/m}^2\text{K}$  to DIN EN ISO 10077-1:2000 on the basis of three panel folding facade, W x H 2700 x 2300 mm

**Tested For**

- Ventilation Class 4 to EN 12 207
- Impermeability to rain, Class 9A to EN 12 208  
(corresponds to test group C according to 18 055)
- Resistance to wind Class B4 to 12 210
- After 10,000 operation no noticeable wear

**Application Examples**



Shopfront



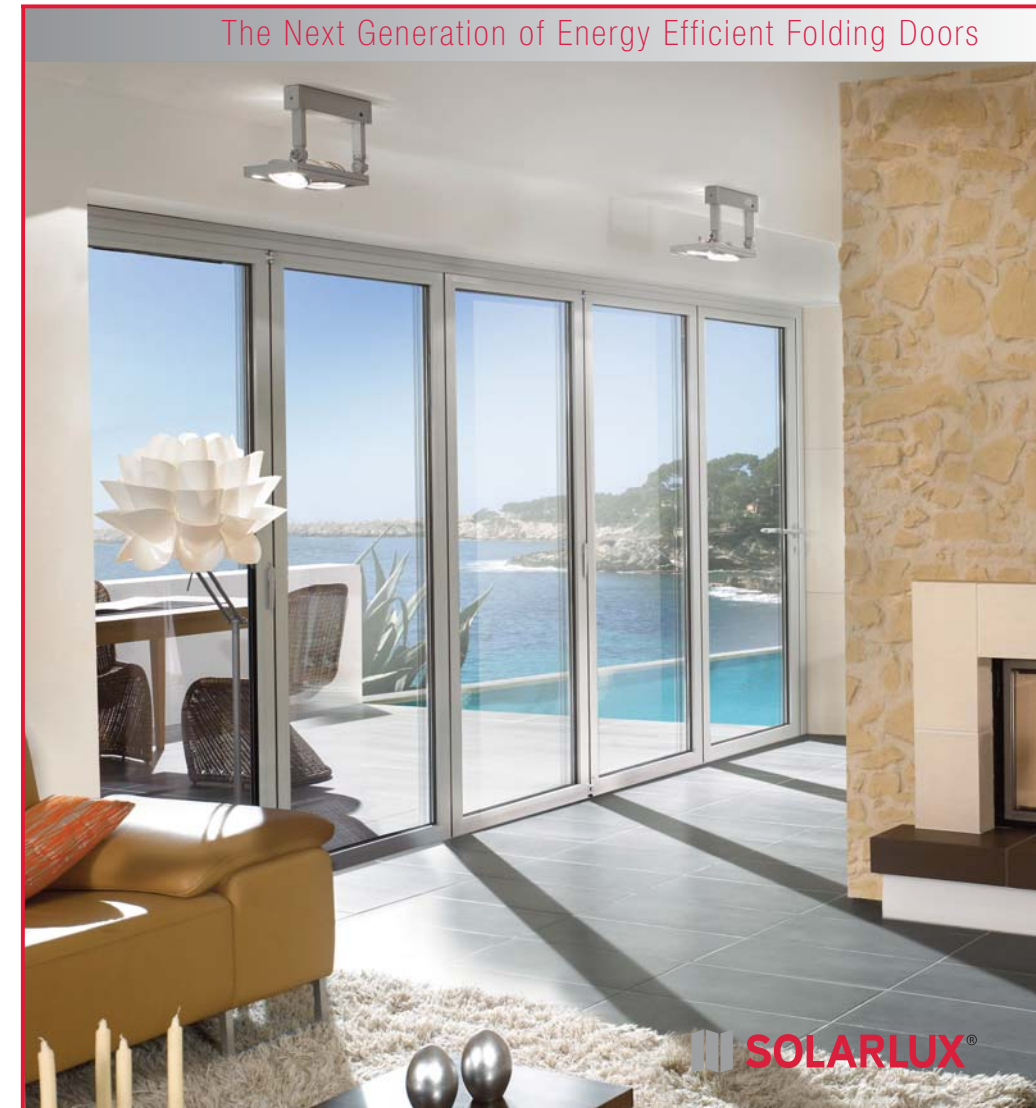
Residential



Residential



Residential



SOLARLUX **SL 60e**  
Folding Facade

**HÄFELE**

[www.hafele.com](http://www.hafele.com)

MELBOURNE DESIGN CENTRE  
T: (03) 9212 2000  
E: [info@hafele.com.au](mailto:info@hafele.com.au)

SYDNEY DESIGN CENTRE  
T: (02) 8788 2200  
E: [nsw@hafele.com.au](mailto:nsw@hafele.com.au)

BRISBANE DESIGN CENTRE  
T: (07) 3344 1533  
E: [qld@hafele.com.au](mailto:qld@hafele.com.au)

NEWCASTLE DESIGN CENTRE  
T: (02) 8788 2200  
E: [nsw@hafele.com.au](mailto:nsw@hafele.com.au)

HOBART DESIGN CENTRE  
T: (03) 6331 7106  
E: [tas@hafele.com.au](mailto:tas@hafele.com.au)

Victoria - Head Office  
T: (03) 9212 2000  
E: [info@hafele.com.au](mailto:info@hafele.com.au)

New South Wales  
T: (02) 8788 2200  
E: [nsw@hafele.com.au](mailto:nsw@hafele.com.au)

Queensland  
T: (07) 8232 9933  
E: [qld@hafele.com.au](mailto:qld@hafele.com.au)

South Australia  
T: (08) 8232 9933  
E: [sa@hafele.com.au](mailto:sa@hafele.com.au)

Western Australia/N.T.  
T: (08) 9249 3833  
E: [wa@hafele.com.au](mailto:wa@hafele.com.au)

A.C.T.  
T: 1800 806 307  
E: [act@hafele.com.au](mailto:act@hafele.com.au)

Tasmania  
T: (03) 6331 7106  
E: [tas@hafele.com.au](mailto:tas@hafele.com.au)

FREECALL: 1800 806 307 for our customers in country regions and A.C.T.

08/08



Testing to Australian Standards pending.



**1** **Safe Operation**

- The entry / exit panel (in case of an odd number of panels) can be secured by means of a special catch and can thus be carried along safely with the moving facade



**2** **Cleaning**

- The exterior of top hung folding facades are easily cleaned by simply removing the hinge pins




**3** **Height Adjustment**

- Once in situ, the folding facade can be easily height adjusted by 6mm which is important if settling of the building occurs



**4** **Heat Insulation**

- Solid multi-chamber profiles with foam core offer the best heat insulation according to the latest energy conservation regulations (EnEV)




**5** **Engineered**

- Stainless steel runners and tracks ensure effortless sliding action of the folding facade



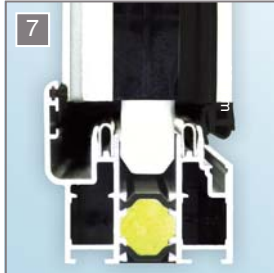
**6** **Security / Comfort**

- The integrated multipoint locking system and the comfortable door handle with latch bolt, lock and profile cylinder ensure high security



**7** **Stability**

- Espagnolettes with 24mm throw lock the panels into the top and bottom track of the frame ensuring they withstand gales and afford high security



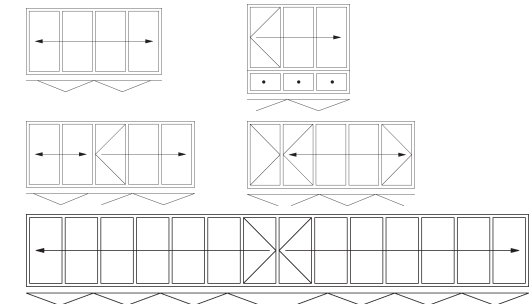
**8** **Width Adjustment**

- The width of the panels can be easily adjusted by adjusting the hinges (patented) with a screwdriver



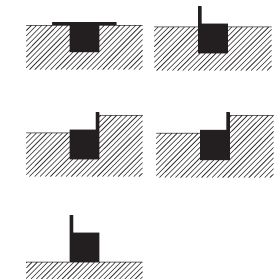
**Specification For Solarlux SL 60e Folding Facade**

**Examples in Plan View / Configuration Variants**

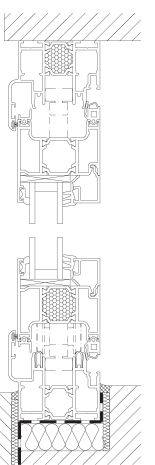


Available as bottom running or top hung folding facade. Can be folded outward, inward, to the left or to the right - as required

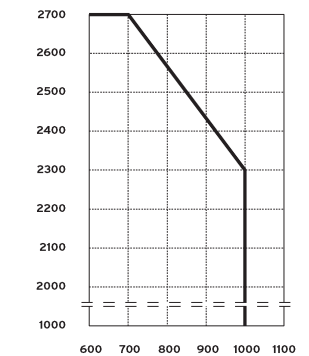
**Examples of Floor track detail**



**Vertical Section**



**Panel Size Chart**



- Maximum Panel Sizes**
- 1000 x 2300 mm
  - 700 x 2700 mm
  - Panel weight up to 80kg
  - Special sizes on request
  - **Maximum Opening Width**
  - 14m if bottom running
  - Unlimited for top hung version

Note: Appropriate glass thickness and size varies according to the proposed location and use. It is determined by the Building Code of Australia and Australian Standards. Advice should be sought from a qualified structural or facade engineer.