

# LIFESTYLE RANGE



# ABOUT US

**MASTER LIFTS** is proud to be an Australian owned, family operated business. The company has been at the forefront of the residential and small commercial lift business since 1992.

During this time **MASTER LIFTS** has become Australia's best known name for having innovative but cost effective, quality residential and small commercial lifts.

With a range of Australian made lifts, supplemented by hand picked imported products, **MASTER LIFTS** is able to provide effective solutions for most access situations through its twenty six centres Australia wide.

With increasing awareness of this quality range of products, **MASTER LIFTS** and dumb waiters are becoming the new 'MUST HAVE' inclusion for many home buyers.

Besides being able to be installed in a building when it is under construction, most of our lifts can be retrofitted into existing buildings.

In the development of our products we have been fortunate to be able to work with some of the best Architects, Designers and Lift Engineers in Europe as well as Australia.

Today, Government Departments, Access Consultants, Architects, Building Designers, Builders and Developers frequently refer to **MASTER LIFTS** when requiring lifts for residential applications or for the mobility impaired in public buildings. All our lift designs either reach or exceed the relevant Parts of the Lift Code, AS 1735.

At **MASTER LIFTS** we acknowledge that we are only as good as the people we employ. Over the years we have gathered some very talented and creative people, from technicians to management, an achievement of which we are very proud. Together we have developed products which have exceeded clients' and our own expectations.

With this outstanding and talented team we have the knowledge and expertise to assist you - the client - from your first enquiry right through to the installation and completion of your chosen lift.

Please remember that every problem has a solution.

We sincerely thank you for allowing **MASTER LIFTS** to help you with your project.



Available through 26 contact centres around Australia



## LIFESTYLE SERIES

## ECO HYDRO

1

Never before have so many Australians found that their lifestyle can be enhanced so affordably. Install an **ECO HYDRO** personal lift in your home and share the discovery.

For over sixteen years Australian architects and designers have been specifying **MASTER LIFTS** products.

**MASTER LIFTS** has installed thousands of electro oil hydraulic, electro water hydraulic, trapezoidal screw and rack and pinion drive lifts across Australia, gaining a reputation for reliability and quality.

**MASTER LIFTS** has now released the **ECO HYDRO**, their latest model in an electro water hydraulic residential lift.

This new model represents the results of all this manufacturing expertise, combined with the latest hydraulic technology.

The **ECO HYDRO** has quality and engineering excellence, and is extremely cost effective.



### A Small Outlay - a Great Life Style Improvement

Whether you are seeking to install a lift in your new residence or wishing to add a lift to your existing home, an **ECO HYDRO** personal lift will enhance your lifestyle while minimising energy consumption. Whether you are transporting persons, luggage or shopping, experience the freedom and ease of movement between the levels of your home that the ECO HYDRO will bring.

Australia's largest residential lift supplier knows that you will ask yourself "how did we ever manage without it?"



## ECO HYDRO

2



### WATER HYDRAULIC FEATURES

- Fully automatic - lift moves with momentary touch of a button.
- Can travel up to four metres.
- Two stops.
- Speed 0.10m/sec (approx.).
- Whisper quiet operation.
- The car and landing control stations are stainless steel. All push buttons, switches and electrical controls are of Commercial elevator standard.
- Smaller space requirement. Because the **ECO HYDRO** comes in its own aluminium shaft it offers a big space saving compared to conventional lifts.
- A pit is not essential.
- There is no requirement for a separate machine room - just space for a cabinet.
- Having its own shaft allows for easy installation into a new building. Its special design also makes for easy retrofitting into an existing building.
- Emergency battery lowering of the car.

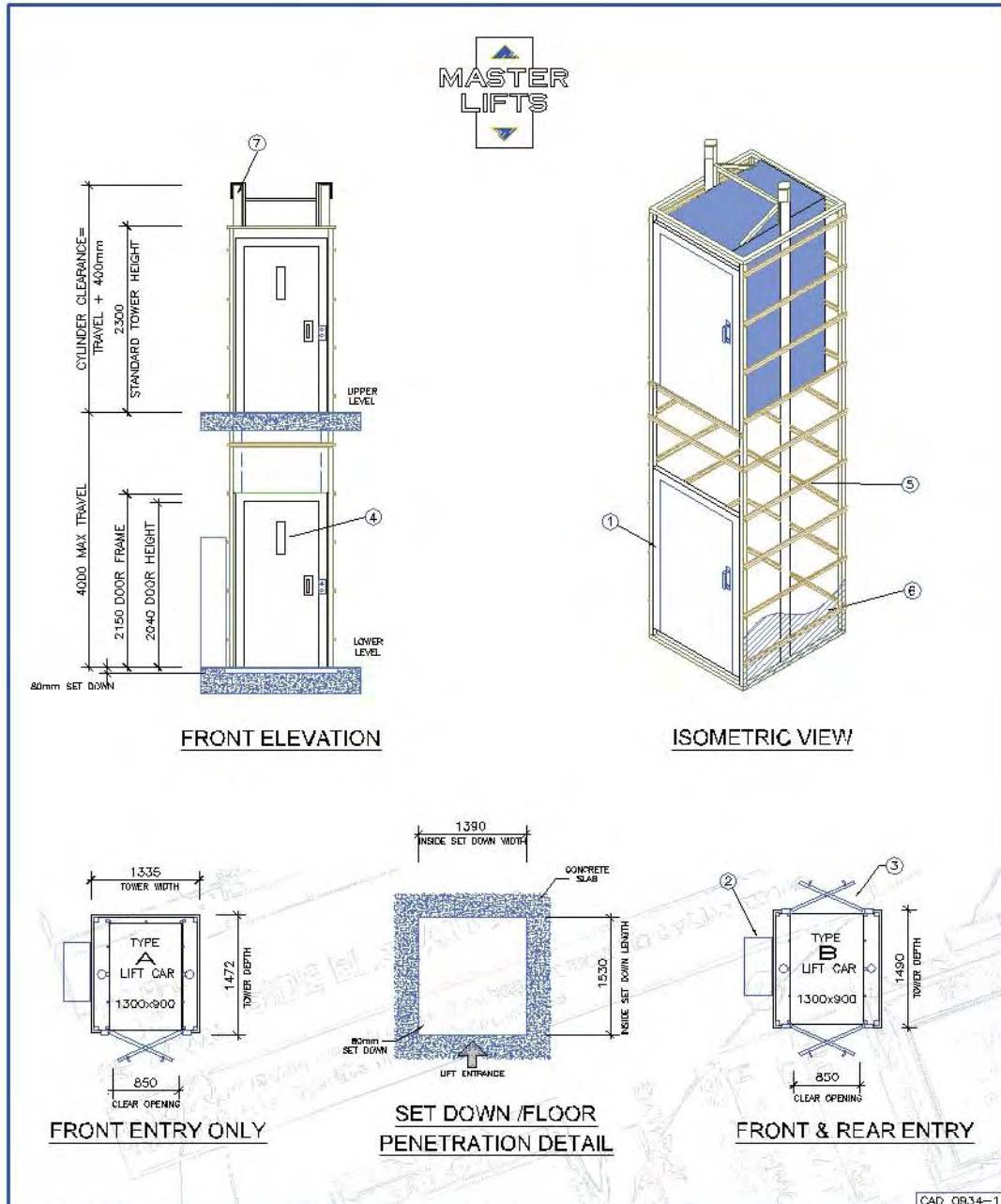


"I have seen the lifts from **MASTER LIFTS** over many years. They are constantly bringing even better products to the market place. I believe that this new **ECO HYDRO** will suit a great number of home owners.

Firstly, it has introduced levels of safety and reliability not found in any similar product in Australia. Secondly, the **ECO HYDRO** has a choice of finishes that will suit the most discerning home owners. Thirdly, it comes at a price, that is so affordable, both to purchase and to maintain. On the matter of price, I believe it should be viewed as an investment not a cost. In my experience the value of the home is increased by a far greater amount than the money required to purchase the **MASTER LIFT**.

I unhesitatingly recommend the **ECO HYDRO** to anyone either building a new house or upgrading their existing home. This will add a great lifestyle improvement."

- **Max Townsend (Lift Consultant Gold Coast)**



LEGEND		NOT FOR CONSTRUCTION	
1.	STEEL DOOR FRAMES	5.	TOP HAT SECTION FOR SECURING EXTERNAL SHAFT CLADDING.
2.	OPTIONAL LOCATION OF CONTROL CABINET (SIZE 1600X720X350)	6.	EXTERNAL SHAFT CLADDING BY OTHERS.
3.	SOLID CORE TIMBER DOORS WITH CONCEALED DOOR CLOSER - OPTIONAL HINGING	7.	IF THERE IS NOT SUFFICIENT CLEARANCE AVAILABLE FOR THE CYLINDERS THE REMAINDER CAN BE RECESSED IN TO A PIT BELOW THE LIFT
4.	OPTIONAL VIEWING PANEL		© 2008 MASTER LIFTS PTY LTD

**ECO HYDRO**  
**Electro Water Hydraulic**  
 RESIDENTIAL LIFT

AS 1735 Part 17  
 FLOOR TO FLOOR TRAVEL  
 UP TO 4000MM  
 2 LEVELS  
 CARRYING CAPACITY  
 UP TO 250KG



## ECO HYDRO

4

### FEATURES

#### Passenger Car

- 250kg carrying capacity.
- Maximum of 2 car entrances. Either front only or one front and one rear.
- Car dimensions - 900mm wide x 1300mm deep.
- Recessed down lights that also operate as emergency lights.
- Recessed emergency telephone.
- Stainless steel hand rail.
- Stainless steel control panel with high quality elevator buttons having a keyed on/off switch, stop button, emergency alarm button and push button for each landing.
- Special imported laminate car panelling.

#### Landing Doors

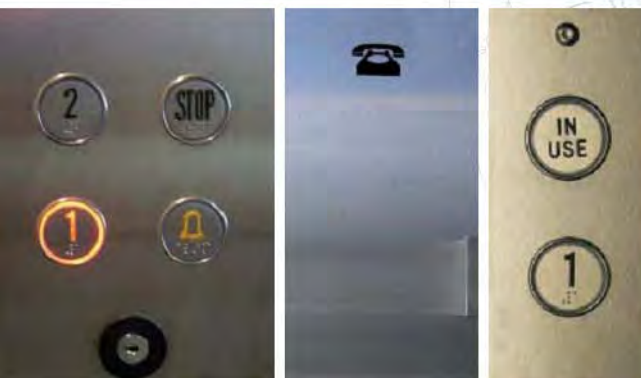
- Hinged timber doors with stainless steel pull handle and push plate.
- Each landing has an electro mechanical interlock that prevents the door from being opened when the lift is not at that landing.
- Concealed hydraulic door closers.

#### Options

- Aluminium framed landing doors fitted with laminated safety glass.
- Alternative car finishes.
- Safety glass vision panels in each door.
- Powered door openers and closers.

#### Australian Lift Code

- Design registered as a passenger lift under AS 1735 Part 17.





## LIFESTYLE SERIES CONTESSA

1

The **CONTESSA 1000** residential lift with the highly favoured Eco Screw Drive System System is in great demand. The **CONTESSA** is manufactured in Australia and is proving to have great appeal to Architects, Designers and Home Owners.

There is a new generation of younger people who can see the advantage in having a **CONTESSA** lift installed in their home long before they reach an advanced age.

With most families leading increasingly busy lives, the **CONTESSA** offers time saving access in multi level homes, for an outlay that is very affordable.

Some reasons why home owners are installing **CONTESSA** lifts:

- The **CONTESSA** does not require as much space as other lifts.
- Quick, easy installation means minimal disruption to your home.
- Significant purchase cost savings.
- Low maintenance costs.
- 240 volt single phase power only.

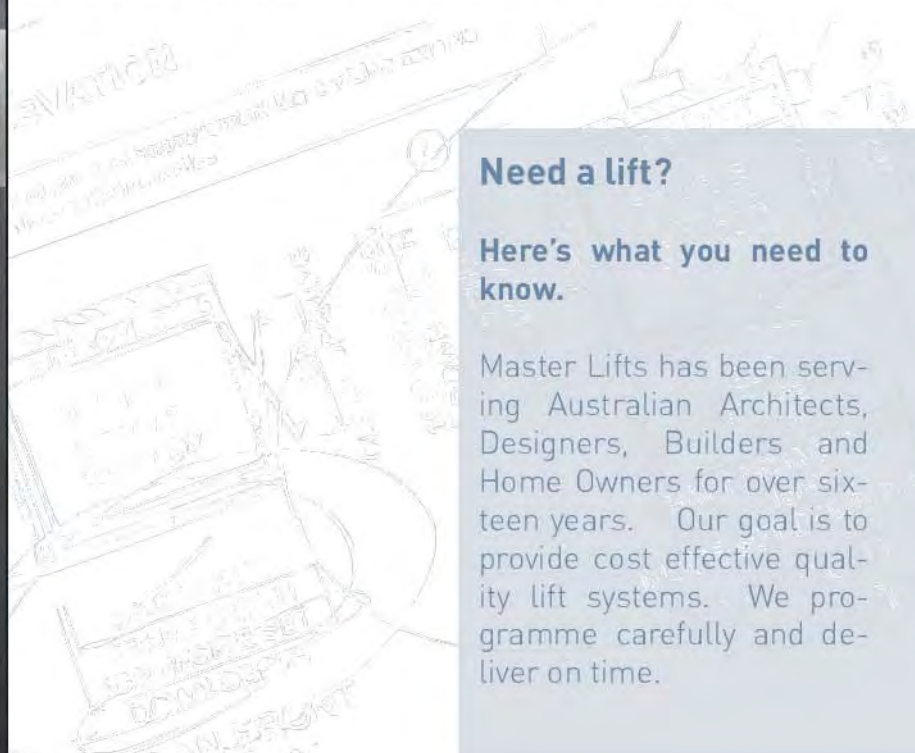
The **CONTESSA** also offers a quick easy transfer between levels for infirm or elderly relatives and visitors, as well as for groceries, laundry, kids gear, suitcases and numerous other items.



### Need a lift?

Here's what you need to know.

Master Lifts has been serving Australian Architects, Designers, Builders and Home Owners for over sixteen years. Our goal is to provide cost effective quality lift systems. We programme carefully and deliver on time.





## CONTESSA

2

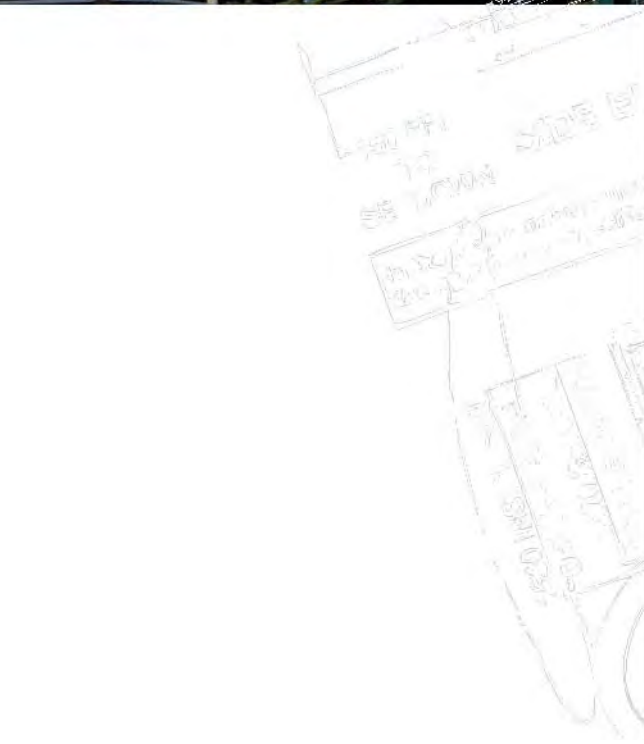
### FEATURES

- Fully automatic operation.
- Can travel up to 7 metres (approx.).
- Up to 5 stops
- VVF controls give a soft start and a soft stop. This refinement is usually only found in more expensive lifts.
- Speed 0.15m/sec (approx.).
- Low noise levels.
- Smaller space requirement. Because the **CONTESSA** comes in its own aluminium shaft it offers a big space saving compared to conventional lifts.
- A pit is not essential.
- It has low overhead requirements.
- MRL (Machine Room Less). There is no requirement for a separate machine room - just a small cabinet, similar to a meter box.
- Having its own shaft allows for easy installation into a new building. Its special design also makes for easy retrofitting into an existing building.
- The low resonance **ECO SCREW DRIVE** is located within the shaft.
- Emergency battery (UPS) lowering of the car in the event of household power failure.
- **HIGHEST SAFETY LEVELS.** The **CONTESSA** has been described by European Lift Engineers as having "the world's safest lift drive system".

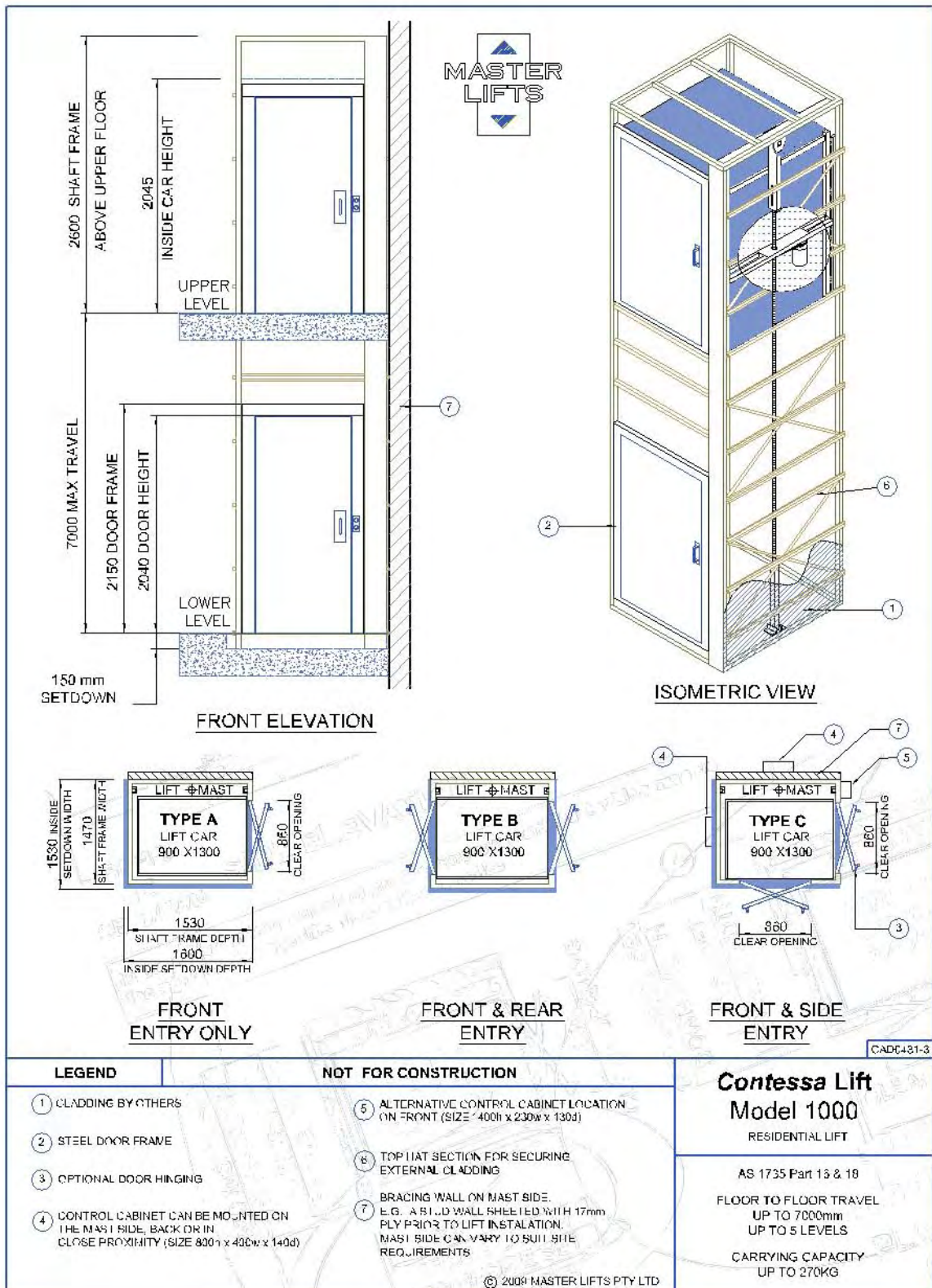
It has the only lift drive system that **CANNOT ACCIDENTALLY FALL.** The only way it can descend is by being driven down.

"We consider the CONTESSA to be extremely good value for money. As builders we require a lift that has quality, but at a cost that is reasonable.

The CONTESSA is offered at an economy price. However, the standard is such that befits a million dollar home."  
- Rocco Pizzico (Brisbane Builder)









## CONTESSA

4

### FEATURES

#### Passenger Car

- 270kg carrying capacity can be increased to 340kg.
- Maximum of 2 entrances (front, back or side).
- Standard finish - 'Chintz' laminate on MDF.
- Recessed down lights that also operate as emergency lights.
- Recessed emergency telephone.
- Stainless steel hand rail.
- Stainless steel control panel with a keyed on/off switch, stop button, emergency alarm button and push button for each landing.

#### Landing Doors

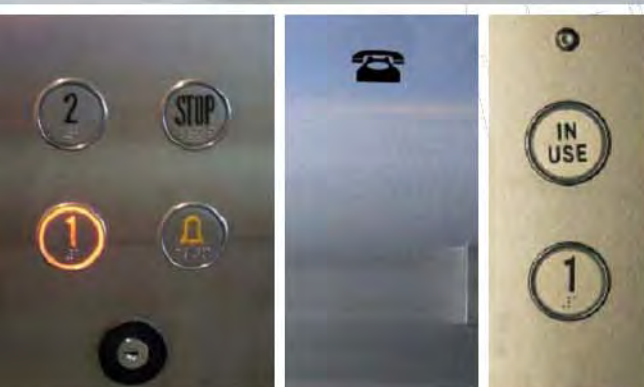
- Hinged timber doors with stainless steel pull handle and push plate.
- Each landing has an electro mechanical interlocking device that prevents the door from being opened when the lift is not at that landing.
- Concealed hydraulic door closers.

#### Options

- Aluminium framed landing doors fitted with laminated safety glass.
- The standard car size of 900mm x 1300mm can be varied.
- The car walls can be customised: timber, laminates, stainless steel etc.
- Powered door openers and closers.
- Car doors.

#### Australian Lift Code

- Design registered as a passenger lift under AS 1735 Part 16 and Part 18.



## LIFESTYLE SERIES

## PETITE

1

In the past many home owners have sought to have a lift fitted into their home, only to discover that they did not have sufficient space available.

Europeans have found the answer to this lack of space problem with the quality **PETITE** residential lift

The **PETITE** has been cleverly designed to require minimal overall space and yet has enough room to comfortably transport two to three persons between floors.

**MASTER LIFTS** has been selected as the exclusive Australian distributor for the **PETITE**. Through their twenty six centres, **MASTER LIFTS** has been installing these well made, but cost effective lifts, around Australia in residences ranging from million dollar homes to simple cottages.

### VERY LITTLE CONSTRUCTION WORK

The **PETITE** requirements are simply an available floor area and an opening of 910mm by 1370mm.

The **PETITE** can be set into a 50mm pit or placed on the existing level floor and accessed with a short ramp.

### NO MACHINE ROOM REQUIRED

Remarkably, the "self sustaining" screw and nut drive system, highly favoured by Lift Engineers in Europe, together with all of the electrics, are built inside the shaft enclosure.

### Need a lift?

#### Here's what you need to know.

Master Lifts has been serving Australian Architects, Designers, Builders and Home Owners for over sixteen years. Our goal is to provide cost effective quality lift systems. We programme carefully and deliver on time.





## PETITE

2



### ATTRACTIVE

The standard **PETITE** is supplied complete with its structure and cladding in white powder coated steel panels. Glass panels are an option.

Doors and frames also have a powder coated finish and the doors each have a large glass panel.

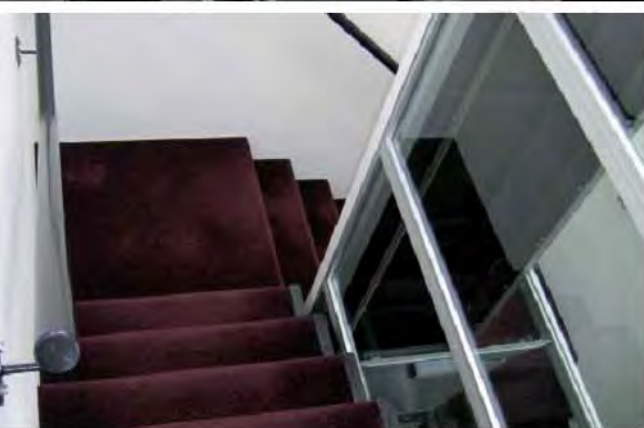
### RELIABILITY

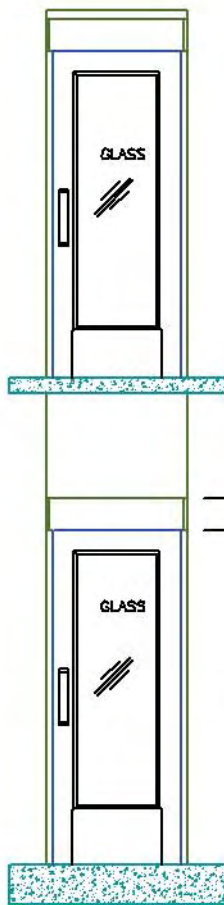
The **PETITE** is proving to be very reliable, requiring minimal maintenance. **MASTER LIFTS** technicians are trained to give periodic preventative maintenance to keep your Petite in pristine operating condition.

### FEATURES

- Lifting capacity: 2 persons or 225kg
- Lifting height: Up to 9000mm
- Shaft height above top landing: Min 2300mm
- Number of landing stops: Max 4 stops
- Number of doors: Max 2 doors per floor
- Operator controls: Constant pressure buttons
- Drive system: Eco Screw/Nut
- Platform size: 805mm wide by 1080mm deep
- Shaft Dimension: 880mm wide by 1340mm deep (or 905mm wide by 1315mm deep where entry door is on long side)
- Electrical connections: 240V 20amps
- Speed: 0.15 m/s
- Technical compliance: AS1735 and European machine directive 98/37/EC
- Pit depth: 50mm, if required, or a ramp
- Standard colour: White

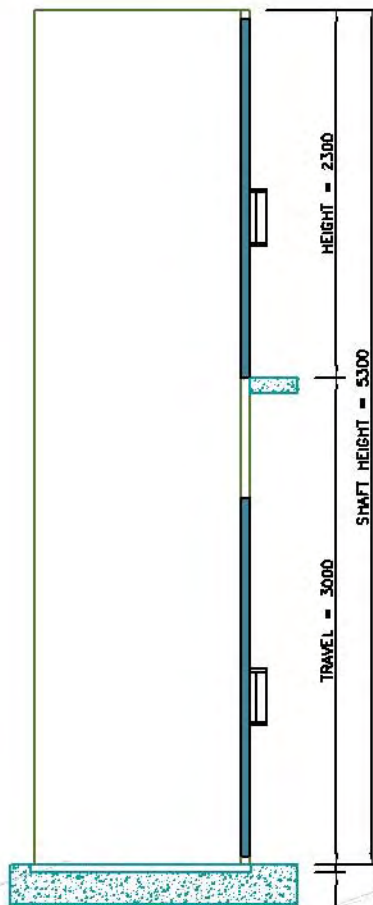
Other standard specifications: Indoor installation, self-closing, electrically and mechanically interlocked entrance doors, telephone, alarm bell, battery operated emergency lowering, large glass door, tinted glass, ceiling, light fitting on back wall, automatic light shut off, automatic lubrication system, aluminium handrail, call and send function with integrated service diagnostic system.



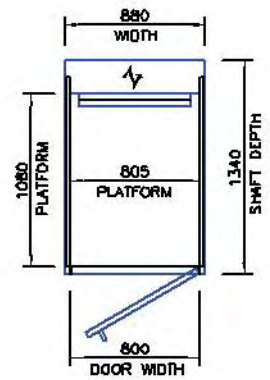


FRONT ELEVATION

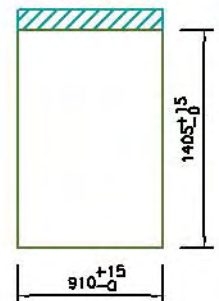
2000  
DOOR HEIGHT  
2240  
DOOR FRAME



SIDE ELEVATION



PLAN



FLOOR PENETRATION  
DETAIL

NOT FOR CONSTRUCTION

**WARRANTY**

12 months.

**MAIN OPTIONS**

Other colours, door locking, automatic door openers, fold-up seat, safety glass panels for the tower walls, stainless steel door handle and stainless steel platform handrail, joy stick, remote control.



**Spotlight**

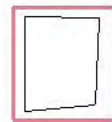


white



stainless steel

**Mirror**



no mirror



square



round

**Handle**



aluminium



stainless steel



pine



ash



oak

**Wall color and panel behind mirror**



white



colour of your choice  
(RAL-scale)

**Floor covering**  
Vinyl flooring



**Rubber flooring**





## LIFESTYLE SERIES CLASSIC

1

Many home owners, looking for a lift with a difference, have installed a **MASTER LIFTS CLASSIC** with its lovely lines and optional glass panelled shaft.

Manufactured in Europe, the **CLASSIC** has had many years to establish its reputation for compactness, great looks, ease of operation and real reliability.

**MASTER LIFTS** has been selected as the exclusive Australian distributor for the **CLASSIC**. Through their 26 centres **MASTER LIFTS** has been installing these well made, but cost effective lifts around Australia in residences and commercial buildings.

### SPACE EFFICIENT

The **CLASSIC** is surprising in its compactness. The standard **CLASSIC** with a car floor area of 1000mm wide x 1480mm deep has outside shaft dimensions of only 1376mm wide x 1600mm deep.

### VERY LITTLE CONSTRUCTION WORK REQUIRED

The **CLASSIC** requirement is simply a floor area that is 1406mm wide x 1630mm deep

The **CLASSIC** can be set into a 50mm pit. Alternatively, it can be placed on a level floor and accessed with a short ramp supplied by the manufacturer.

### DRIVE SYSTEM

The self sustaining screw and nut drive system, as highly favoured by European Lift Engineers. It provides a safe, smooth, quiet ride.

### NO EXTERNAL MACHINE ROOM

Remarkably the **CLASSIC** does not have an external machine room. The drive system and the electricals are built inside the shaft enclosure.

### Need a lift?

**Here's what you need to know.**

Master Lifts has been serving Australian Architects, Designers, Builders and Home Owners for over sixteen years. Our goal is to provide cost effective quality lift systems. We programme carefully and deliver on time.





## CLASSIC

2



### VERY SMART APPEARANCE

The standard **CLASSIC** is supplied complete with its slim but robust shaft structure and cladding of white powder coated steel panels. Safety glass panels are optional. Self closing doors are powdercoated off white and have a large glass panel.

### RELIABILITY

The **CLASSIC** has been designed to give many years of trouble free service and features, among other things, automatic lubrication of the screw system.

The **CLASSIC** also features battery operated emergency lowering for use in the event of a power outage.

### FEATURES

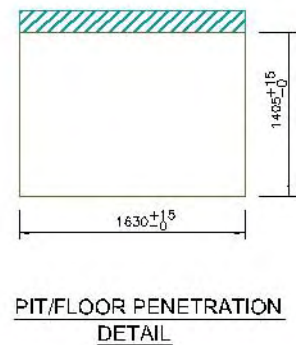
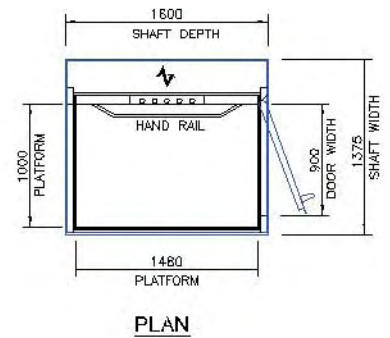
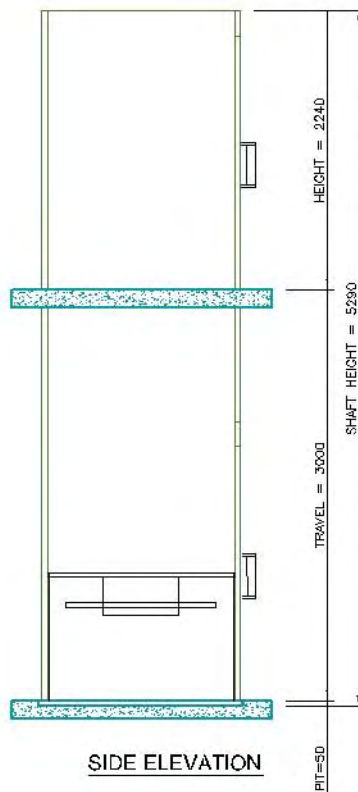
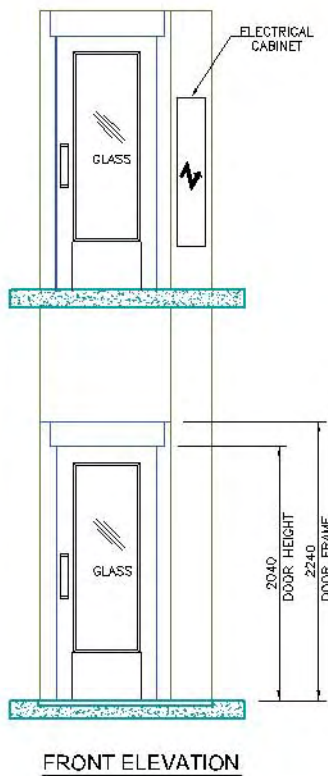
- Lifting capacity: 5 persons or 400kg
- Lifting height: Up to 9000mm
- Shaft height above top landing: Standard 2240mm
- Number of landing stops: Max 6 stops
- Operator controls: Constant pressure buttons
- Drive system: Screw/Nut
- Shaft Dimension: 1375mm wide x 1600mm deep.
- Electrical connections: 3 phase 400V 50Hz or single phase
- Speed: 0.15 m/s
- Control supply: 24 V
- Motor: 2.2 kW
- Technical compliance: AS1735 and European machine directive 98/37/EC
- Pit depth: it depth: 50mm, if required, or a ramp
- Standard colour: White (RAL9003), middle panel of platform is painted grey (RAL7036)
- Other standard specifications: Indoor installation, self-closing, mechanically interlocked entrance doors, call and send function.

### WARRANTY

12 months.







NOT FOR CONSTRUCTION

### MAIN OPTIONS

- 240 volt single phase electrical connection.
- Shaft finishing 1100mm above upper landing.
- Choice of RAL powdercoated colours.
- Choice of door models.
- Automatic door openers
- Entry and exit on the long side of the platform
- Fold up seat
- Safety glass panels for shaft walls
- Tinted glass

### OTHER OPTIONS:

Various platform widths/lengths (1100 mm x 1480 mm, 1000 mm x 1280 mm), stainless steel door handle and platform hand rail, soft start, remote control, stainless steel unit.



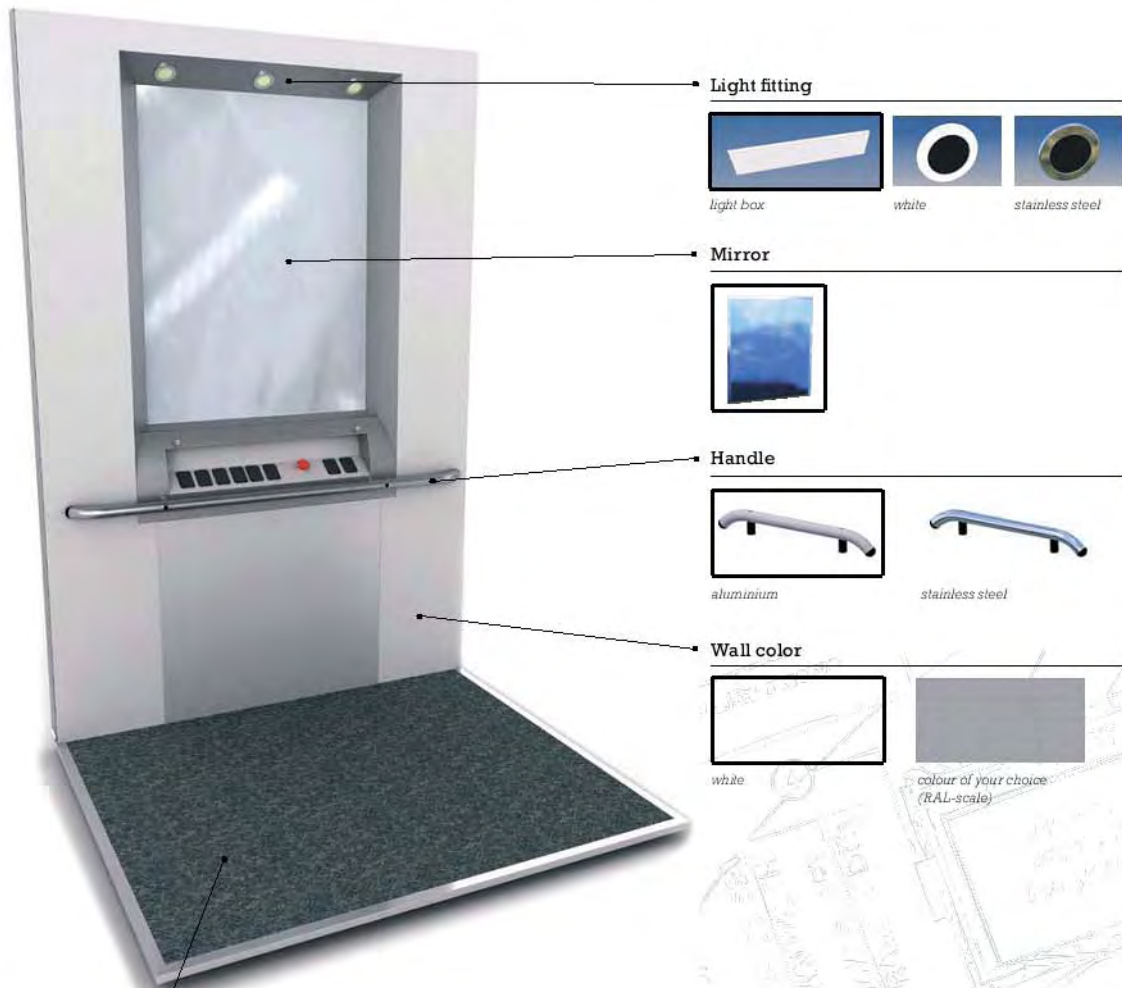
## CLASSIC

4

### FULL WALL

With the full wall option the platform attains the feeling of a "conventional" lift. The key differences from our standard lift are:

- The platform wall is 2100mm instead of 1100mm.
- The platform wall is provided with a mirror and a light box with spotlights as an option.



#### Light fitting



light box

white

stainless steel

#### Mirror



#### Handle



aluminium

stainless steel

#### Wall color



white

colour of your choice  
(RAL-scale)

#### Floor covering

Vinyl flooring



dark grey blue

cool blue

yellow

anthracite grey

dark green

light green

honey

light beige

#### Rubber flooring



black

green

sand

grey

blue

Highlighted items are STANDARD



## LIFESTYLE SERIES

## DUMBWAITER/SERVICE LIFT

1

Besides transporting persons between building levels, **MASTER LIFTS** has a long record of providing a wide range of lifts and lifting devices for transporting goods and a variety of items between floor levels of buildings.

Many have recognised, often through bitter experience, the risks of serious injury to themselves or their staff that can be associated with carrying bags or containers up or down stairs. A workers compensation claim can easily exceed the cost of one of these dumbwaiters.

The **MASTER LIFTS** range includes:

Electric dumbwaiters (services lifts)	pages 2 & 3
Manual hand operated dumbwaiters	pages 4 & 5
Electric goods lifts	page 6
Parcel lifts	page 6

Electric dumbwaiters, both 415v and 240v, are being installed in residential, business and public buildings.

**MASTER LIFTS** supply electric goods lifts in situations where large items and heavier weights need to be moved between floors of commercial premises.

The manual hand operated dumbwaiter is being used in many situations in residential and business premises as well as public buildings, such as libraries, colleges and schools.

Parcel lifts are mounted on stairways, to one side.



### Need a lift?

**Here's what you need to know.**

Master Lifts has been serving Australian Architects, Designers, Builders and Home Owners for over sixteen years. Our goal is to provide cost effective quality lift systems. We programme carefully and deliver on time.



## DUMBWAITER/SERVICE LIFT

2



**PRECISION ELECTRIC DUMBWAITERS (SERVICE LIFTS)** powered either by 415 volts or 240 volts are often required for residential, business and public buildings and can serve up to 5 levels.

In residences they are invaluable for transporting groceries, food items, suitcases and a myriad of other items between levels. In business premises, they are being used to move paper, machine parts, liquids, clothing and numerous other items. In hospitals, medical and food supplies and laundry are the items most commonly transported. In libraries, schools and government offices, dumbwaiters can move books, stationery and all kinds of records.

The **PRECISION ELECTRIC DUMBWAITER** comes in its own steel shaft. This steel shaft can be erected:

- Inside, and secured to, your own stud wall or block structure.
- Alongside, and attached to, one of the structural walls of the building. An appropriate low cost skin or cladding can be fixed directly to the steel shaft without any further surrounding structure being necessary.

In most cases the motor, controller, gearbox and lifting pulley can be located in a smaller sized machine cabinet positioned above the shaft.

If overhead location presents a problem, then this equipment can usually be located alongside the shaft on a lower level.

### FEATURES

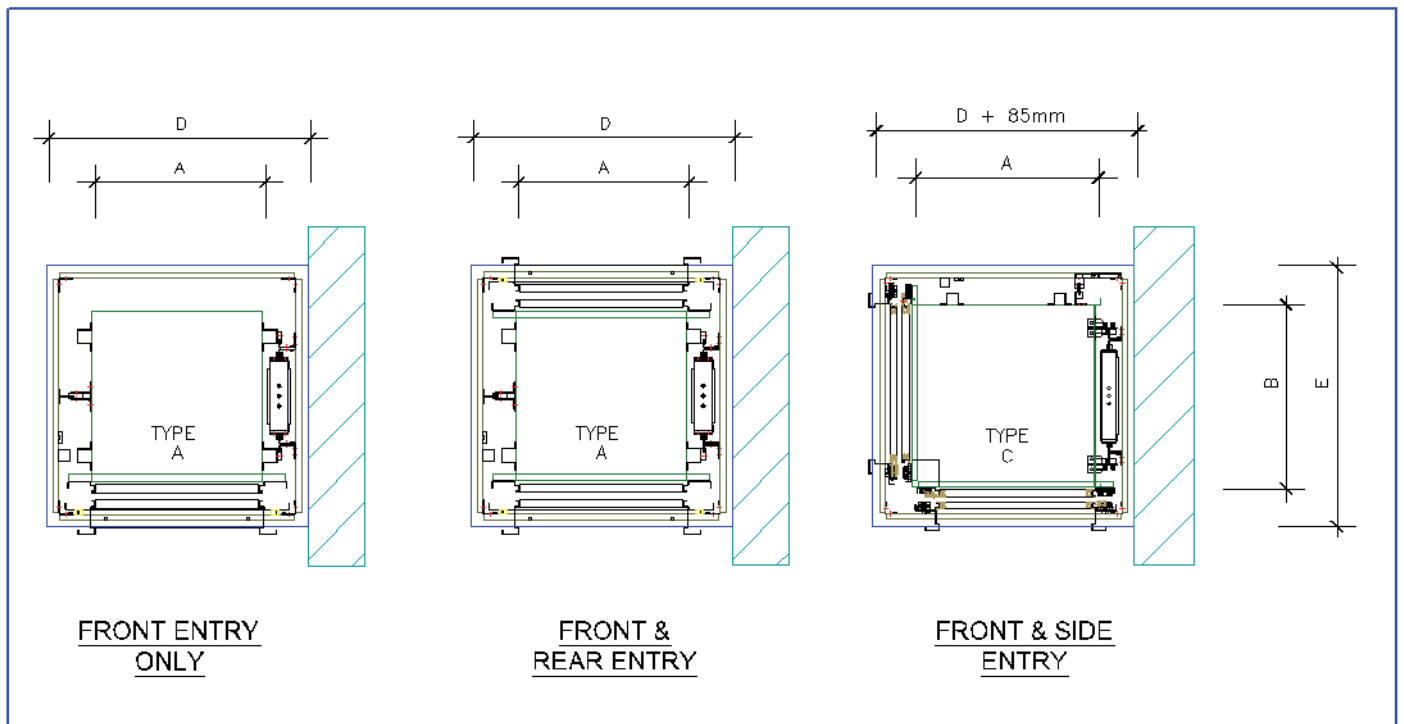
Custom sizes up to 900 x 900 x 1000mm (larger sizes available)

- Up to 275kg capacity
- Can be installed at counter or floor level
- Maximum travel distance 12 metres
- Automatic controls from any floor
- Car can have one or two openings
- Car doors are vertically bi-parting
- Cars are commercial quality stainless steel
- Three phase power is standard (single phase power is an option)
- Meet all code requirements for safety

### WARRANTY

12 months





**BRACING WALL ON COUNTER WEIGHT SIDE TIMBER STUD WITH 12mm PLY SHEETING**

**STANDARD SIZES**

CARRYING CAPACITY Kg (UP TO)	INTERNAL CAR WIDTH	INTERNAL CAR DEPTH	INTERNAL CAR HEIGHT	MINIMUM SHAFT WIDTH	MINIMUM SHAFT DEPTH
	A	B	C	D	E
50	450	450	600	825	760
50/100	500	500	600	875	810
100/200	600	600	600	975	910
100/200	600	700	800	975	1010
100/200	700	700	800	1075	1010
100/200	700	800	800	1075	1110
100/200	750	750	800	1125	1060
100/200	800	800	800	1175	1110
100/200	800	800	1000	1175	1110
100/200	800	900	1000	1175	1210
100/200	900	900	1000	1275	1210



PLAN FRONT  
SIDE ENTRY



HAND OPERATED DUMBWAITERS

MASTER LIFTS

LITTLE AUSSIE BUTLER

LITTLE AUSSIE BUTLER

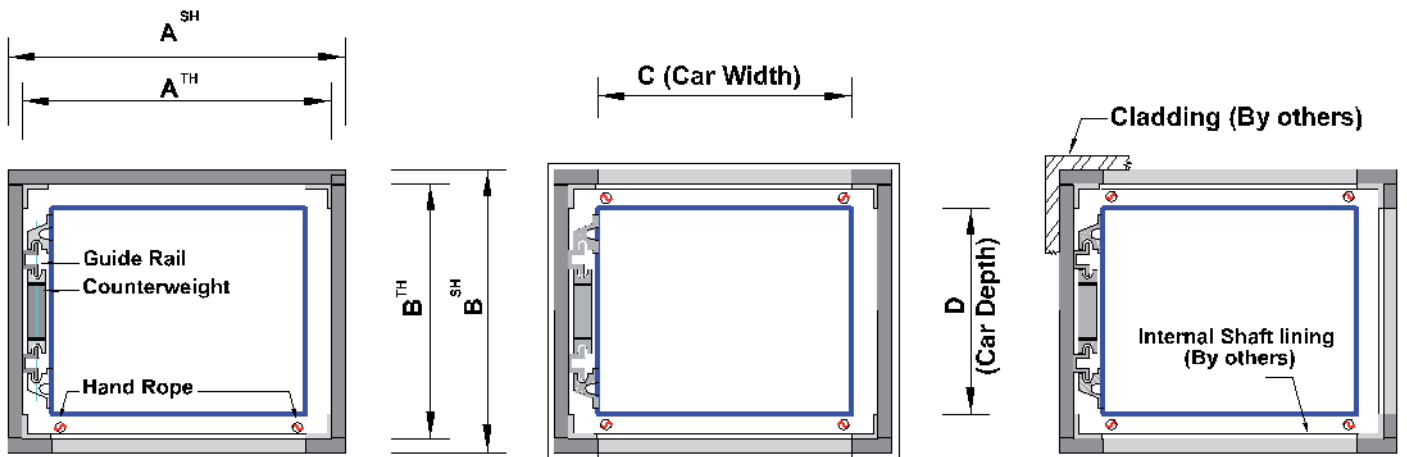


MASTER LIFTS



WARRANTY





**FRONT ENTRY ONLY  
(F)**

**FRONT & REAR ENTRY  
(FR)**

**FRONT & SIDE ENTRY  
(CP)**

Standard Sizes (Distances in mm)

F - Front (only) FR - Front & Rear CP - Corner Post (Front & Side or Front, Side & Rear)

TH - Timber Hoistway (By others) SH - Steel Hoistway (By Master lifts)

	MODEL	1F 1FR	2F 2FR	3F 3FR	4F 4FR	1CP	2CP	3CP	4CP
	CAPACITY in Kg	15	25	35	45	15	25	30	40
$A^{TH}$	HOISTWAY WIDTH (Inside to Inside of Timber Hoistway constructed by others)	605	705	805	910	605	705	805	910
$B^{TH}$	HOISTWAY DEPTH (Inside to Inside of Timber Hoistway constructed by others)	490	590	690	790	490	590	690	790
$A^{SH}$	HOISTWAY WIDTH (Outside to Outside of Steel Hoistway as supplied)	655	755	855	960	655	755	855	960
$B^{SH}$	HOISTWAY DEPTH (Outside to Outside of Steel Hoistway)	540	640	740	840	540	640	740	840
<b>C</b>	OUTSIDE CAR WIDTH	510	610	710	815	510	610	710	815
<b>D</b>	OUTSIDE CAR DEPTH	410	510	610	710	410	510	610	710
<b>E</b>	INSIDE CAR HEIGHT	600	700	740	740	600	700	740	740
	TH MINIMUM FLOOR TO CEILING AT TOP LEVEL WHEN USING A MINIMUM SILL HEIGHT OF 850mm	2350	2500	2600	2650	2500	2650	2700	2750
	SH MINIMUM FLOOR TO CEILING AT TOP LEVEL WHEN USING A MINIMUM SILL HEIGHT OF 850mm	2400	2550	2700	2750	2550	2700	2800	2850

**NOT FOR CONSTRUCTION**



PLAN...  
SIDE EN...



CONTESSA GOODS LIFT

CONTESSA GOODS LIFT

GOODS LIFTS

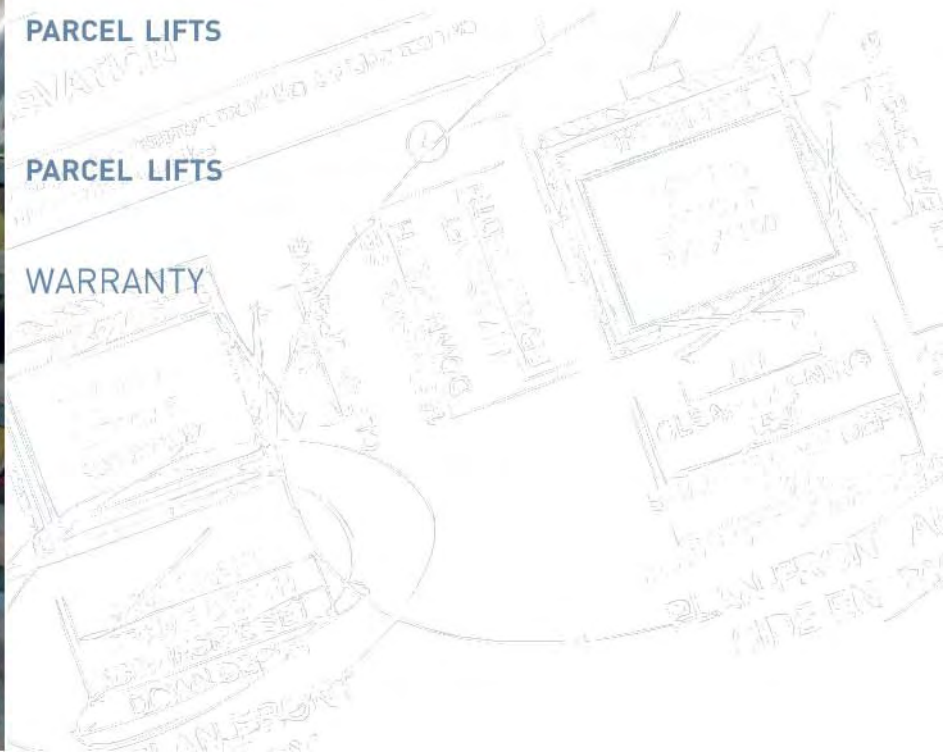


PARCEL LIFTS

PARCEL LIFTS

PARCEL LIFTS

WARRANTY





# WHICH ONE?

## WHICH LIFT WILL SUIT YOU?

The Australian made Contessa 1000 Residential lift that can travel up to seven metres and serve up to five landings.

Or perhaps the Australian made Eco Hydro Residential Lift that serves two levels only and can travel up to four metres.

Is space an issue? Then the fully imported PETITE is the answer.

Would a glass shaft suit your décor? The Classic can give you that feeling of space.

If space is really limited a Dumb Waiter can still do the carrying for you!



## ONGOING SERVICE

**MASTER LIFTS** offers a range of Preventative Maintenance Agreements. Our technicians can keep your lift fine tuned regularly to keep it functioning in peak condition and meet the requirements of your local Workplace Health and Safety.



BRISBANE SYDNEY MELBOURNE ADELAIDE PERTH CANBERRA DARWIN HOBART  
MAJOR REGIONAL CENTRES



ESTABLISHED SINCE 1992

Whatever kind of elevator your project needs, **MASTER LIFTS** will have a solution available when you need it. Manufacturing in Australia means shorter supply times. The Australian range is complemented by a selection of the latest market-leading products and innovations from Europe and America. Whether sourced from our overseas suppliers or manufactured by Master Lifts in Australia, of paramount concern to the company is the quality and pricing of the products supplied.

You are welcome to come and see your lift in course of manufacture.



Available through 26 contact centres around Australia



for Free information from the Master Lifts Office closest to you  
**PHONE 1300 4 LIFTS (1300 454 387)**