

**ALLOY** / photography index  
**1.** 40x20mm copper **2.** 41x41mm #4 brushed **3.** 20x20mm #4 brushed  
**4.** 20x20mm brass **5, 6, 7.** 20x20mm #4 brushed **8.** 20x20mm copper  
**9.** 20x20mm #4 brushed **10.** 100x10mm assorted stack **11.** 40x20mm  
#8 mirror **12.** 20x20mm #4 brushed **13.** 20x20mm brass **14.** 50x50mm  
#4 brushed. **Front and Back Covers.** 20 x 20 #4 brushed.

**ALLOY**  
© 2006 all rights reserved issue 03 www.alloydesign.com.au  
design Jason Massarotto - diameter@iinet.net.au /  
photography Pierre Toussaint + Bill Anagrius /  
text Mischa Way /

**ALLOY** / The ALLOY range of tiles has been created to fulfil a strong and growing demand by architects and designers for well designed, high-quality metal tiles to work in concert with the clean, contemporary lines of modern interiors, exteriors and even landscaped water features.

ALLOY is a design company based in Sydney, Australia, that works exclusively with high quality metals and alloys, predominantly Grade 304 stainless steel, as well as

titanium, copper and brass, to produce and manufacture contemporary, carefully-considered home wares & architectural structures.

Jonathon Worner, managing and design director at ALLOY, started the company in 1998 (a division of a family company

started in 1973 - Pressform Engineering) out of a fascination with the beautifully utilitarian nature of stainless steel. He recognised a gap in the design market for a range of

high quality, long-lasting metal tiles, which, until his innovative approach, traditional tile manufacturers had been unable to produce.

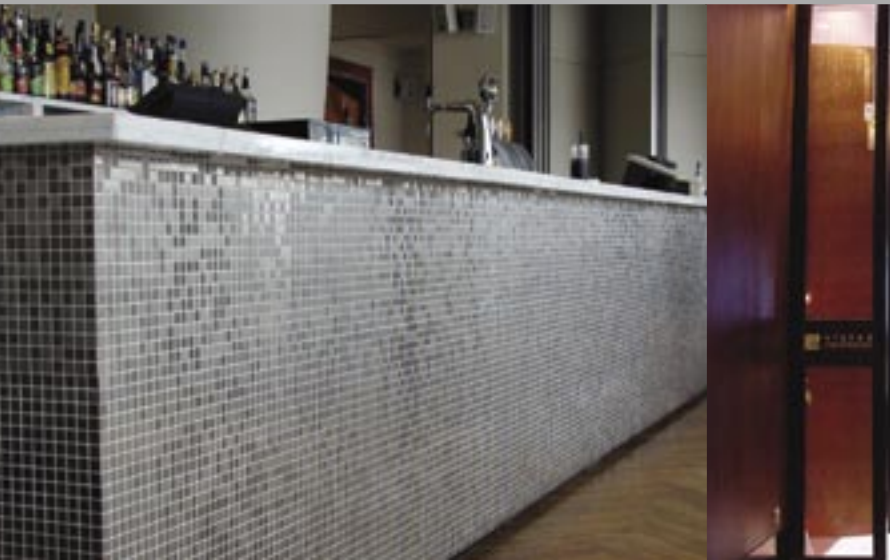
The exclusive ALLOY tiles are carefully designed and finely machined in many different styles at the ALLOY factory in Australia using the highest

quality materials including stainless steel sourced only from France and Japan, ensuring an immaculate finish combined with product longevity to suit the

most discerning designer. ALLOY was the first and still the only company to use a thick and solid 2mm material to provide long lasting strength and durability. The tile sheets, unlike low-grade copies, contain no backing mesh, plastic inserts or metal look-alike coatings.

\*To provide the perfect finish, ALLOY has developed its own special Tile Adhesive; AOPM (Alloy one pack mastic) it is available in 1kg & 2kg tubs.

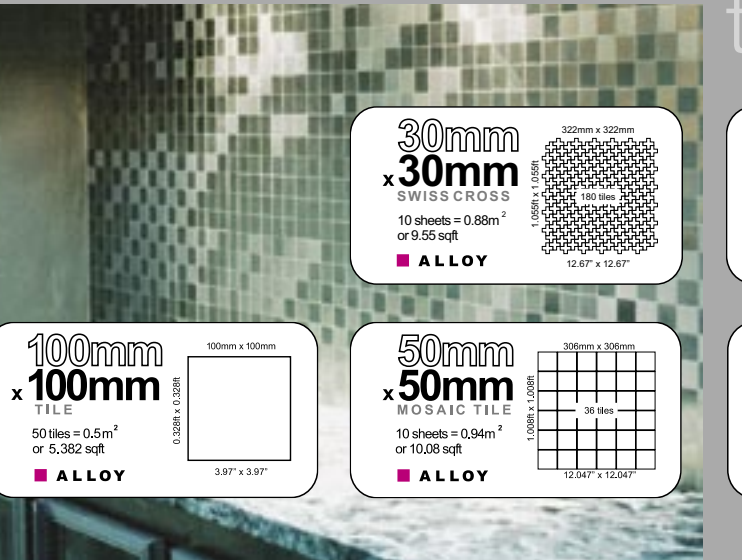
12



13



14



# tile sheet specs and installation pieces

**30mm x 30mm**  
**SWISS CROSS**  
10 sheets = 0.88m<sup>2</sup>  
or 9.55 sqft  
■ **ALLOY**

322mm x 322mm  
1.026m x 1.026m  
180 tiles  
12.67' x 12.67'

**41mm x 41mm**  
**MOSAIC TILE**  
10 sheets = 0.85m<sup>2</sup>  
or 9.18 sqft  
■ **ALLOY**

292mm x 292mm  
0.947m x 0.947m  
49 tiles  
11.5' x 11.5'

**19mm Ø diameter**  
**PENNY TILE**  
10 sheets = 0.91m<sup>2</sup>  
or 9.80 sqft  
■ **ALLOY**

317mm x 302mm  
1.044m x 0.968m  
288 tiles  
12.48' x 11.89'

**40mm x 12mm**  
**STACK**  
10 sheets = 1.01m<sup>2</sup>  
or 10.88 sqft  
■ **ALLOY**

326mm x 316mm  
1.026m x 1.036m  
184 tiles  
12.8375' x 12.5'

**40mm x 12mm**  
**BRICK**  
10 sheets = 0.88m<sup>2</sup>  
or 9.52 sqft  
■ **ALLOY**

309mm x 316mm  
1.013m x 1.036m  
161 tiles  
12.1875' x 12.5'

**20mm x 20mm**  
**MOSAIC TILE**  
10 sheets = 1.04m<sup>2</sup>  
or 11.16 sqft  
■ **ALLOY**

322mm x 322mm  
1.044m x 1.044m  
225 tiles  
12.50' x 12.50'

**20mm x 20mm**  
**DIAMOND**  
10 sheets = 0.91m<sup>2</sup>  
or 9.77 sqft  
■ **ALLOY**

319mm x 319mm  
1.049m x 1.049m  
200 tiles  
12.5' x 12.5'

**100mm x 100mm**  
**TILE**  
50 tiles = 0.5m<sup>2</sup>  
or 5.382 sqft  
■ **ALLOY**

100mm x 100mm  
0.328m x 0.328m  
3.97' x 3.97'

**50mm x 50mm**  
**MOSAIC TILE**  
10 sheets = 0.94m<sup>2</sup>  
or 10.08 sqft  
■ **ALLOY**

306mm x 306mm  
1.008m x 1.008m  
36 tiles  
12.047' x 12.047'

**100mm x 10mm**  
**BRICK**  
10 sheets = 0.78m<sup>2</sup>  
or 8.39 sqft  
■ **ALLOY**

247mm x 316mm  
0.807m x 1.036m  
56 tiles  
9.6875' x 12.441'

**100mm x 10mm**  
**STACK**  
10 sheets = 0.91m<sup>2</sup>  
or 10.11 sqft  
■ **ALLOY**

297mm x 316mm  
0.977m x 1.036m  
84 tiles  
11.6875' x 12.441'

**40mm x 12mm**  
**HERRINGBONE**  
10 sheets = 0.85m<sup>2</sup>  
or 9.15 sqft  
■ **ALLOY**

309mm x 300mm  
1.011m x 0.968m  
150 tiles  
12.1653' x 11.8110'

**40mm x 12mm**  
**BASKET WEAVE**  
10 sheets = 0.82m<sup>2</sup>  
or 8.87 sqft  
■ **ALLOY**

288mm x 288mm  
0.944m x 1.044m  
147 tiles  
11.375' x 11.375'

**40mm x 20mm**  
**STACK**  
10 sheets = 1.05m<sup>2</sup>  
or 11.26 sqft  
■ **ALLOY**

329mm x 318mm  
1.026m x 1.044m  
120 tiles  
12.8375' x 12.5625'

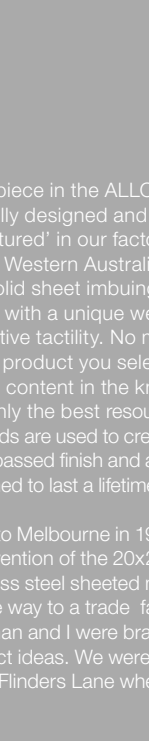
**40mm x 20mm**  
**BRICK**  
10 sheets = 0.98m<sup>2</sup>  
or 10.51 sqft  
■ **ALLOY**

307mm x 318mm  
1.011m x 1.044m  
105 tiles  
12.063' x 12.5625'





2 >>



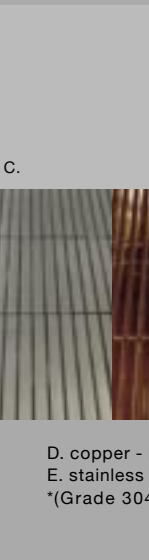
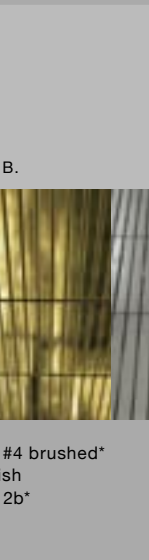
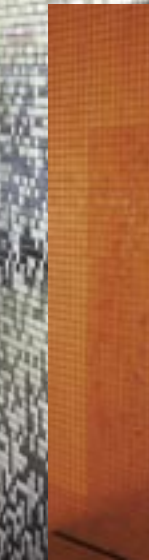
Each piece in the ALLOY range is carefully designed and machine 'sculptured' in our factory in Perth, Western Australia from one solid sheet imbuing each article with a unique weight and seductive tactility. No matter which product you select, you will be content in the knowledge that only the best resources and methods are used to create an unsurpassed finish and a product designed to last a lifetime.



the façade of a building was clad with aluminium panels which led me to the question, why not stainless steel mosaic tiles?

A trip to Melbourne in 1998 inspired the invention of the 20x20mm stainless steel sheeted mosaic tiles. On the way to a trade fair, Elisa Coleman and I were brainstorming product ideas. We were walking down Flinders Lane when I noticed

Since then, ALLOY stainless steel tiles have been highly sought after and are now distributed around the world.  
Jonathon Worner  
Design Director

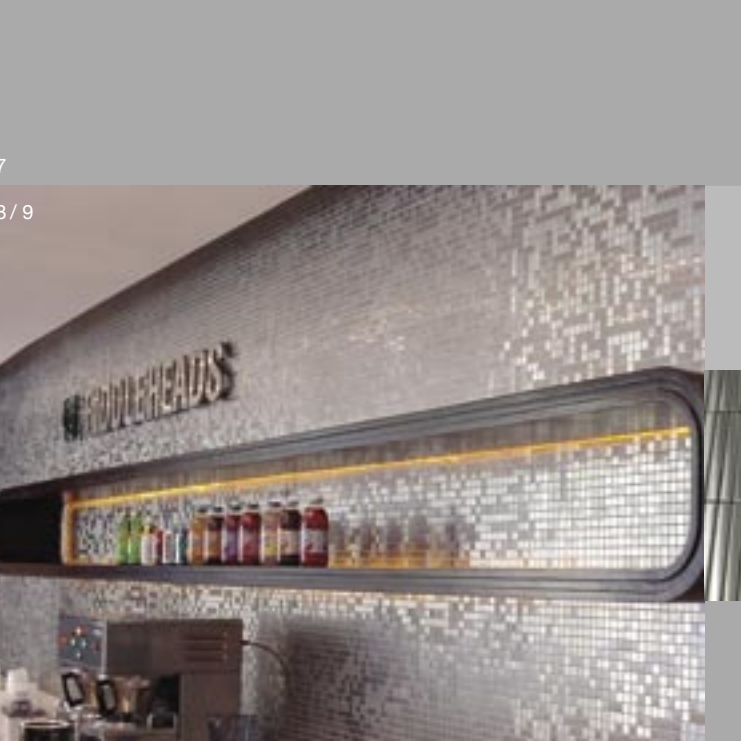
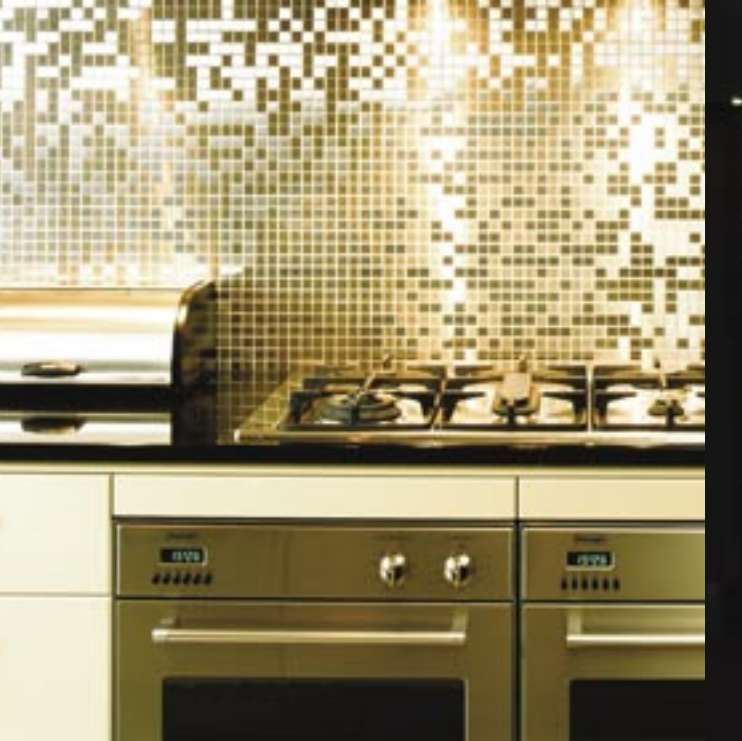


3 >>

4

5

6 >>



10

solid materials :

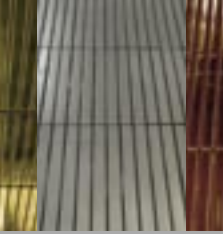
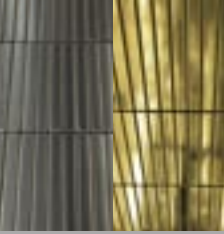
A.

B.

C.

D.

E.



A. stainless steel #4 brushed\*  
B. brass - mill finish  
C. stainless steel 2b\*

D. copper - mill finish  
E. stainless steel #8 mirror polished\*  
\*(Grade 304 or Marine Grade 316)

11 >>



<<7

<<8/9