

Innovative and Functional Door Hardware



StarTec Collection  
2009



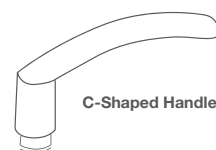
- Mifare™ technology
- Fast opening process
- DND function (Do Not Disturb)
- Suitable for use on apartment doors
- For door thickness 38 - 80 mm
- 1,000 audit trails, including unlocking via the use of the electronic card, emergency unlocking via the use of mechanical keys from outside, and opening the door from inside
- Individual customer designed front foil is possible
- Emergency manual key function
- Alarm function: long beep alarm when the latch is maliciously operated or the door is not closed properly.

**DT Lite** is an electronic identification and locking system from Häfele for secure and simple access control.

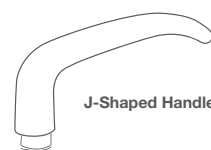
**DT Lite** can be used to flexibly allocate and block access.

**DT Lite** is easy to install or retrofit. The fact that identification is touchless makes the system wear resistant and extremely low maintenance.

- Secure
- Simple
- Convenient
- Economical
- Touchless
- Wear-resistant
- Low maintenance
- Can be retrofitted
- Extendable



**C-Shaped Handle**



**J-Shaped Handle**

DT Lite C-Shaped Handle  
Satin Chrome

- Left Hand 499.19.174
- Right Hand 499.19.175

DT Lite J-Shaped Handle  
Satin Chrome

- Left Hand 499.19.134
- Right Hand 499.19.135

Please enquire for other finishes.





- 450mm
- 600mm
- 900mm

903.00.922  
903.00.924  
903.00.927



- 450mm
- 600mm

903.00.972  
903.00.974



- 450mm
- 600mm

903.00.912  
903.00.914



- 300/450mm
- 400/600mm
- 800/1000mm
- 1000/1200mm

903.00.942  
903.00.944  
903.00.946  
903.00.948



- 300mm
- 600mm

903.00.870  
903.00.874



- 450mm
- 600mm

903.00.882  
903.00.884



- 370/600mm

903.99.323



- 300/450mm

903.99.340



- 200/300mm
- 300/450mm
- 400/600mm
- 1000/1200mm
- 1400/1600mm
- 1800/2000mm

903.05.790  
903.05.791  
903.05.792  
903.05.793  
903.05.794  
903.05.795



- 200/300mm
- 300/450mm
- 400/600mm
- 1000/1200mm
- 1400/1600mm
- 1800/2000mm

903.05.890  
903.05.891  
903.05.892  
903.05.893  
903.05.894  
903.05.895



- 450mm
- 600mm

903.05.762  
903.05.764



- 450mm
- 600mm

903.05.752  
903.05.754



- 450/600mm
- 600/750mm
- 1000/1150mm

903.00.932  
903.00.934  
903.00.937



- 450mm
- 600mm
- 1000mm

903.00.070  
903.00.074  
903.00.078



- 450mm
- 600mm
- 1000mm

903.00.170  
903.00.174  
903.00.178



- 450mm

903.99.358

- Finish: Stainless Steel, satin
- Sizes: First dimension refers to fixing centres.  
Second dimension (if shown) refers to overall length.



# Lever Handles



Passage, Stainless steel 316  
 • Polished 902.21.341  
 • Satin 902.21.340  
 Privacy, Stainless steel 304  
 • Polished 902.21.345  
 • Satin 902.21.344



Passage, Stainless steel 316  
 • Polished 902.21.343  
 • Satin 902.21.342  
 Privacy, Stainless steel 304  
 • Polished 902.21.347  
 • Satin 902.21.346



Passage, Stainless steel 316  
 • Polished 902.21.421  
 • Satin 902.21.420  
 Privacy, Stainless steel 304  
 • Polished 902.21.425  
 • Satin 902.21.424



Passage, Stainless steel 316  
 • Polished 902.21.423  
 • Satin 902.21.422  
 Privacy, Stainless steel 304  
 • Polished 902.21.427  
 • Satin 902.21.426



Passage, Stainless steel 316  
 • Polished 902.21.351  
 • Satin 902.21.350  
 Privacy, Stainless steel 304  
 • Polished 902.21.355  
 • Satin 902.21.354



Passage, Stainless steel 316  
 • Polished 902.21.353  
 • Satin 902.21.352  
 Privacy, Stainless steel 304  
 • Polished 902.21.357  
 • Satin 902.21.356



Passage, Stainless steel 316  
 • Polished 902.21.431  
 • Satin 902.21.430  
 Privacy, Stainless steel 304  
 • Polished 902.21.435  
 • Satin 902.21.434



Passage, Stainless steel 316  
 • Polished 902.21.433  
 • Satin 902.21.432  
 Privacy, Stainless steel 304  
 • Polished 902.21.437  
 • Satin 902.21.436



Passage, Stainless steel 316  
 • Polished 902.21.361  
 • Satin 902.21.360  
 Privacy, Stainless steel 304  
 • Polished 902.21.365  
 • Satin 902.21.364



Passage, Stainless steel 316  
 • Polished 902.21.363  
 • Satin 902.21.362  
 Privacy, Stainless steel 304  
 • Polished 902.21.367  
 • Satin 902.21.366



Passage, Stainless steel 316  
 • Polished 902.21.441  
 • Satin 902.21.440  
 Privacy, Stainless steel 304  
 • Polished 902.21.445  
 • Satin 902.21.444



Passage, Stainless steel 316  
 • Polished 902.21.443  
 • Satin 902.21.442  
 Privacy, Stainless steel 304  
 • Polished 902.21.447  
 • Satin 902.21.446



Passage, Stainless steel 316  
 • Polished 902.21.381  
 • Satin 902.21.380  
 Privacy, Stainless steel 304  
 • Polished 902.21.385  
 • Satin 902.21.384



Passage, Stainless steel 316  
 • Polished 902.21.383  
 • Satin 902.21.382  
 Privacy, Stainless steel 304  
 • Polished 902.21.387  
 • Satin 902.21.386



Passage, Stainless steel 316  
 • Polished 902.21.321  
 • Satin 902.21.320  
 Privacy, Stainless steel 304  
 • Polished 902.21.325  
 • Satin 902.21.324



Passage, Stainless steel 316  
 • Polished 902.21.323  
 • Satin 902.21.322  
 Privacy, Stainless steel 304  
 • Polished 902.21.327  
 • Satin 902.21.326



Passage, Stainless steel 316  
 • Polished 902.21.331  
 • Satin 902.21.330  
 Privacy, Stainless steel 304  
 • Polished 902.21.335  
 • Satin 902.21.334



Passage, Stainless steel 316  
 • Polished 902.21.333  
 • Satin 902.21.332  
 Privacy, Stainless steel 304  
 • Polished 902.21.337  
 • Satin 902.21.336



Passage, Stainless steel 316  
 • Polished 902.21.411  
 • Satin 902.21.410  
 Privacy, Stainless steel 304  
 • Polished 902.21.415  
 • Satin 902.21.414



Passage, Stainless steel 316  
 • Polished 902.21.413  
 • Satin 902.21.412  
 Privacy, Stainless steel 304  
 • Polished 902.21.417  
 • Satin 902.21.416



Passage, Stainless steel 316  
 • Polished 902.21.391  
 • Satin 902.21.390  
 Privacy, Stainless steel 304  
 • Polished 902.21.395  
 • Satin 902.21.394



Passage, Stainless steel 316  
 • Polished 902.21.393  
 • Satin 902.21.392  
 Privacy, Stainless steel 304  
 • Polished 902.21.397  
 • Satin 902.21.396



Passage, Stainless steel 316  
 • Polished 902.21.541  
 • Satin 902.21.540  
 Privacy, Stainless steel 304  
 • Polished 902.21.545  
 • Satin 902.21.544



Passage, Stainless steel 316  
 • Polished 902.21.551  
 • Satin 902.21.550  
 Privacy, Stainless steel 304  
 • Polished 902.21.555  
 • Satin 902.21.554



Passage, Stainless steel 316  
 • Polished 902.21.521  
 • Satin 902.21.520  
 Privacy, Stainless steel 304  
 • Polished 902.21.525  
 • Satin 902.21.524



Passage, Stainless steel 316  
 • Polished 902.21.511  
 • Satin 902.21.510  
 Privacy, Stainless steel 304  
 • Polished 902.21.515  
 • Satin 902.21.514



Passage, Stainless steel 316  
 • Polished 902.21.531  
 • Satin 902.21.530  
 Privacy, Stainless steel 304  
 • Polished 902.21.535  
 • Satin 902.21.534

## Privacy Sets



Privacy Sets are supplied complete with privacy latch.

# Accessories

## Escutcheons

For Australian Locks



Oval Cylinder Escutcheon, Stainless steel 316  
 Square  
 • Polished 902.56.243  
 • Satin 902.56.242  
 Round  
 • Polished 902.56.241  
 • Satin 902.56.240



Thumbturn with 6x2mm Spindle, Stainless steel 316  
 Square  
 • Polished 902.53.247  
 • Satin 902.53.246  
 Round  
 • Polished 902.53.245  
 • Satin 902.53.244



Emergency Release for 6x2mm Spindle, Stainless steel 316  
 Square  
 • Polished 902.56.247  
 • Satin 902.56.246  
 Round  
 • Polished 902.54.245  
 • Satin 902.54.244



Blank Escutcheon, Stainless steel 316  
 • Polished 902.54.907  
 • Satin 902.54.906

## Escutcheons

For Euro Locks



Profile Cylinder Escutcheon, Stainless steel 316  
 Square  
 • Polished 902.52.243  
 • Satin 902.52.242  
 Round  
 • Polished 902.52.241  
 • Satin 902.52.240



Thumbturn and Emergency Release set, with 8x8mm Spindle, Stainless steel 316  
 • Polished 902.53.243  
 • Satin 902.53.242



Thumbturn and Emergency Release set, with 8x8mm Spindle, Stainless steel 316  
 • Polished 902.53.241  
 • Satin 902.53.240



## Mortice Locks



**Australian Mortice Lock**

60mm backset

- Stainless steel, satin
- Stainless steel, polished
- Brass, polished PVD

911.23.320  
911.23.321  
911.23.328



**Euro Mortice Lock**

60mm backset / 85mm distance

- Stainless steel, satin
  - Brass polished, lacq
- (Also available with 45mm backset)

911.03.493  
911.03.492



**Euro Rebate Kit**

- Stainless steel, satin
- Brass, polished

911.39.018  
911.39.017



**Euro Roller Bolt Lock**

55mm backset / 24mm forend width

- Steel silver, nickel
- Stainless steel, satin
- Brass polished, lacq

911.24.007  
911.24.008  
911.24.009

## Cylinders



**Australian C4 Oval Cylinder**

Keyed to Differ

- Brass, satin chrome
- (Also available keyed alike)

911.75.175



**Australian C4 Oval Cylinder with Thumbturn**

Keyed to Differ

- Brass, satin chrome
- Cylinder Cam

911.75.176  
911.75.179



**Euro Single Profile Cylinder**

Keyed to Differ

- Brass, satin chrome
- (Also available keyed alike)

916.84.000  
916.84.150



**Euro Double Profile Cylinder**

Keyed to Differ

- Brass, satin chrome
  - Brass, pol chrome
- (Also available keyed alike)

916.84.100  
916.84.150



**Euro Profile Cylinder with Thumbturn**

Keyed to Differ

- Brass, satin chrome
  - Brass, pol chrome
- (Also available keyed alike)

916.84.200  
916.84.250

## Deadbolt Locks, Tubular Latches, Tubular Bolts and Roller Latches



**Deadbolt Lock with Thumbturn**

60-70mm backset

Stainless Steel

- Satin
- Polished
- Brass
- Polished PVD

911.22.560  
911.22.561  
911.22.568



**Deadbolt Lock, Double Cylinder**

60-70mm backset

Stainless Steel

- Satin
- Polished
- Brass
- Polished PVD

911.22.570  
911.22.571  
911.22.578



**Tubular Latch**

60mm backset

Stainless Steel

- Satin
- Polished
- Brass
- Polished

911.23.172  
911.23.259  
911.23.173



**Tubular Bolt**

60mm backset

Stainless Steel

- Satin
- Polished
- Brass
- Polished PVD

911.22.405  
911.22.426  
911.22.407



**Roller Latch**

Stainless Steel

- Satin
- Brass
- Polished

911.24.010  
911.24.011

## Hinges



**Butt Hinge**

- 100 x 75mm Loose Pin Steel, chrome plated
- Polished 926.89.062
- Satin 926.89.064
- 100 x 75mm Fixed Pin
- 100 x 100mm Loose Pin Steel, chrome plated
- Polished 926.89.082
- Satin 926.89.084
- 100 x 100mm Fixed Pin
- Polished 926.89.092
- Satin 926.89.094



**Butt Hinge**

- 100 x 75mm Loose Pin Stainless steel
- Polished 926.84.001
- Satin 926.84.000
- 100 x 75mm Fixed Pin
- 100 x 100mm Loose Pin Stainless steel
- Polished 926.84.011
- Satin 926.84.010
- 100 x 100mm Fixed Pin
- Polished 926.89.061
- Satin 926.89.060



**Butt Hinge, Ball Bearing**

- 100 x 75mm Fixed Pin Stainless steel
- polished 926.84.031
- Satin 926.84.051
- Brass
- 100 x 100mm Fixed Pin Stainless steel
- polished 926.84.041
- Satin 926.84.040
- Brass
- polished 926.84.048



**Lift Off Hinge**

- 100 x 75mm Stainless steel, satin
- DIN Right 926.27.803
- DIN Left 926.27.703



**Fastfix Hinge For Timber Frames**

- 100 x 70mm Stainless steel
- Satin 926.97.001
- Polished 926.97.004
- Brass plated 926.97.002



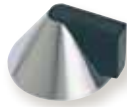
**Fastfix Hinge For Aluminium Frames**

- 100 x 70mm Stainless steel
- Satin 926.97.000
- Polished 926.97.003
- Brass plated 926.97.080

## Door Stops



Brass  
 • Chrome, polished 937.01.102  
 • Chrome, satin 937.01.104  
 • Nickel, satin 937.01.106  
 • Polished 937.01.108



Brass  
 • Chrome, polished 937.52.502  
 • Chrome, satin 937.52.504  
 • Nickel, satin 937.52.506  
 • Polished 937.52.508



Stainless Steel  
 • Satin 937.51.710  
 • Polished 937.51.711



Stainless Steel  
 • Satin 937.12.100



## Door Holder

Stainless Steel  
 • Satin 937.51.720  
 • Polished 937.51.701

# Flush Handles



Visible Fix, 127 x 45mm  
 Stainless Steel  
 • Satin 902.00.800



Visible Fix, 129 x 37mm  
 Stainless Steel  
 • Satin 902.00.802



Concealed Fix, 130 x 37mm  
 Stainless Steel  
 • Satin 152.51.001



Concealed Fix, 140 x 45mm  
 Stainless Steel  
 • Satin 152.52.002



Concealed Fix, 130 x 37mm  
 Brass  
 • Chrome plated polished  
 • Chrome plated satin  
 • Nickel plated satin



901.01.502  
 901.01.504  
 901.01.506



# Bathroom Accessories

## Rembrandt Series



Hook  
 980.60.132



Toilet Roll Holder  
 980.60.302



Towel Ring  
 980.60.102



Toilet Brush Holder  
 980.60.312



Glass Shelf, 500mm  
 980.60.212



Towel Rack, 580mm  
 980.60.262



Towel Rail, 660mm  
 980.60.112



Soap basket  
 980.60.012



Soap Dish with Holder  
 980.60.312



Glass with Holder  
 980.60.022



## Design Centres & Showrooms

We recognise that there is simply nothing better than the real thing to convey the true quality and finish of our products. Häfele Design Centres are equipped with an extensive range of displays including our Startec range of innovative and functional door hardware.

Updated regularly, the diverse range of innovative products are designed to improve the functionality of residential, commercial, retail and hospitality projects.

### HÄFELE AUSTRALIA PTY. LTD. STATE OFFICES

#### Victoria - Head Office -

8 Monterey Road, (P.O. Box 1066)  
Dandenong VIC 3175  
Telephone: (03) 9212 2000  
Fax: (03) 9212 2001  
E-mail: info@hafele.com.au

#### New South Wales

10 Forsyth Close,  
Wetherill Park NSW 2164  
Telephone: (02) 8788 2200  
Fax: (02) 8788 2201  
E-mail: nsw@hafele.com.au

#### Queensland

12 Selhurst Street,  
Coopers Plains QLD 4108  
Telephone: (07) 3344 1533  
Fax: (07) 3344 1770  
E-mail: qld@hafele.com.au

#### Western Australia/N.T

29-33 Juna Drive,  
Malaga WA 6090  
Telephone: (08) 9249 3833  
Fax: (08) 9249 3328  
E-mail: wa@hafele.com.au

#### South Australia

21 Chesser Street,  
Adelaide SA 5000  
Telephone: (08) 8232 9933  
Fax: (08) 8232 9977  
E-mail: sa@hafele.com.au

#### Australian Capital Territory

1/88 Newcastle Street,  
Fyshwick ACT 2609  
Telephone: (02) 6202 2800  
Fax: (02) 6228 1418  
E-mail: act@hafele.com.au

#### Tasmania

262 York Street,  
Launceston TAS 7250  
Telephone: (03) 6331 7106  
Fax: (03) 6334 6414  
E-mail: tas@hafele.com.au

For all customers in country regions  
Call 1300 659 728

### DESIGN CENTRES

#### Melbourne Design Centre

Lvl 1, 75-77 Flinders Lane,  
Melbourne VIC 3000  
Telephone: (03) 9212 2000  
Fax: (03) 9652 3701  
E-mail: info@hafele.com.au

#### Sydney Design Centre

115 Flinders Street,  
Surry Hills NSW 2010  
Telephone: (02) 8788 2200  
Fax: (02) 9692 0711  
E-mail: nsw@hafele.com.au

#### Newcastle Design Centre

Unit 1, 47 Bolton Street,  
Newcastle NSW 2300  
Telephone: (02) 8788 2200  
Fax: (02) 4921 0901  
E-mail: nsw@hafele.com.au

#### Brisbane Design Centre

1 Breakfast Creek Road,  
Newstead QLD 4006  
Telephone: (07) 3344 1533  
Fax: (07) 3253 3701  
E-mail: qld@hafele.com.au

#### Hobart Design Centre

309 Liverpool Street,  
Hobart TAS 7000  
Telephone: (03) 6331 7106  
Fax: (03) 6334 6414  
E-mail: tas@hafele.com.au

#### Perth Design Centre

Ground Floor, 105 St Georges Terrace  
Perth WA 6000  
Telephone: (08) 9249 3833  
Fax: (08) 9249 3328  
E-mail: wa@hafele.com.au  
*Opening Mid 2009*

### HÄFELE NEW ZEALAND LTD. STATE OFFICES & DESIGN CENTRES

#### Eastern Design Centre

16 Accent Drive,  
East Tamaki, Auckland  
Telephone: (09) 274 2040  
Fax: (09) 274 2041  
E-mail: info@hafele.co.nz

#### Wellington Design Centre

The Wool Store, Level 1  
262 Thorndon Quay, Wellington  
Telephone: (04) 472 0294  
Fax: (04) 472 0295  
E-mail: wellington@hafele.co.nz

#### Christchurch Design Centre

5 Wigram Close  
Sockburn, Christchurch  
Telephone: (03) 343 8200  
Fax: (03) 343 8201  
E-mail: christchurch@hafele.co.nz

#### Auckland Design Centre

62 Cook Street  
Auckland City, Auckland  
Telephone: (09) 274 2530  
Fax: (09) 274 2531  
E-mail: architectural@hafele.co.nz

Freephone 0800 4 HAFELE

# HÄFELE

[www.hafele.com](http://www.hafele.com)

This catalogue is for the use of the recipient only. It remains in all respects the property of Häfele. Reproduction of this brochure in whole or in part, or the reproduction of the illustrations as well as the copying of the layout, is strictly prohibited. All measurements given in this publication are not binding. Rights for design improvements reserved. No responsibility for typographical or other errors occurring in the catalogue production. All deliveries made corresponding to Häfele sales conditions. Häfele reserves the right to adjust prices as may be deemed necessary.

2009. Copyright by Häfele. All rights reserved. Printed in Australia.