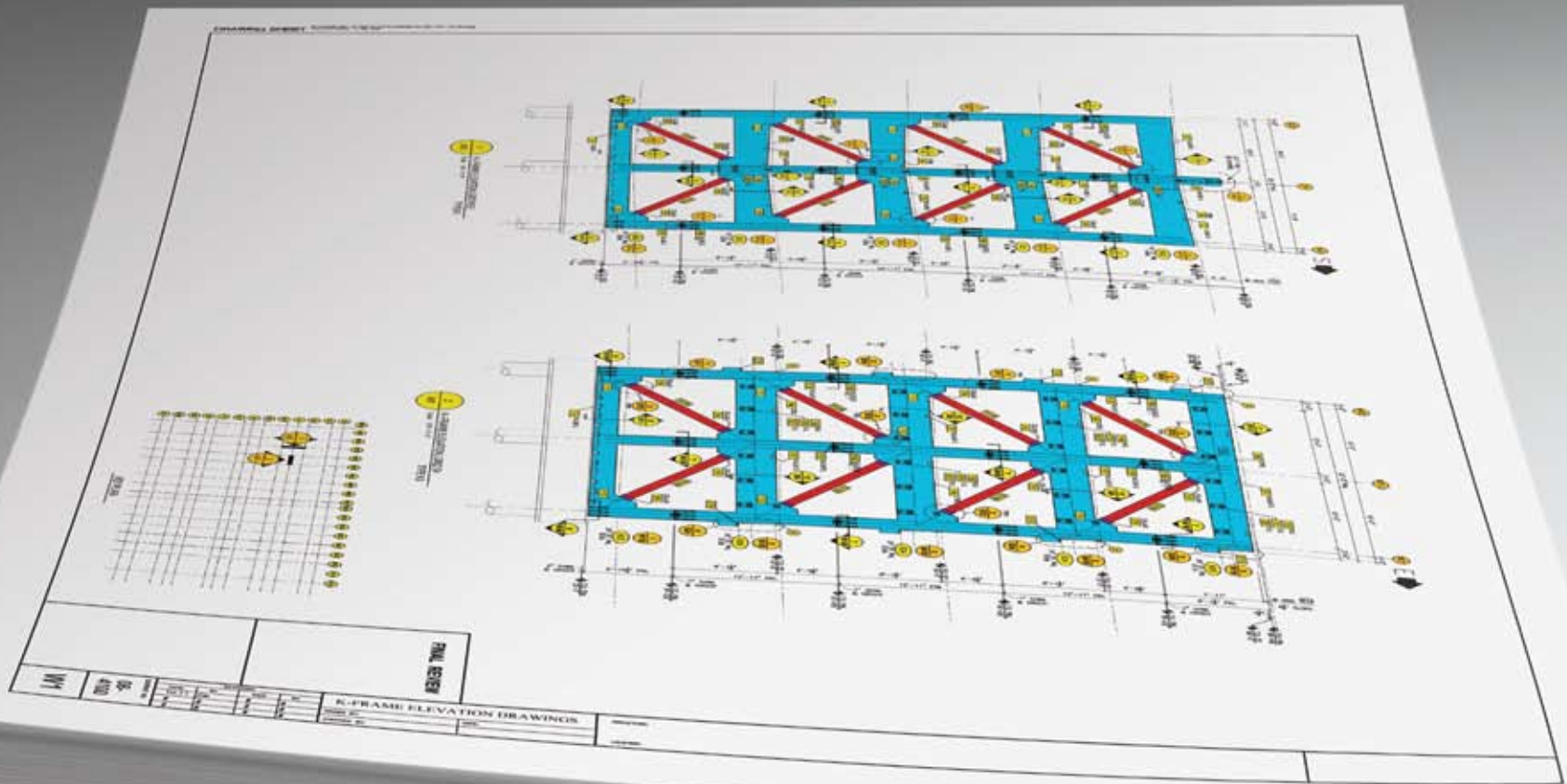




KIP COLOR 80

ACCELERATE YOUR COLOR WIDE FORMAT PRINT PRODUCTION....



PRESENTING THE NEXT GREAT MILESTONE FROM KIP  
THE WORLD OF WIDE FORMAT COLOR HAS NEVER SEEN PRODUCTION LIKE THIS

The KIP Color 80 print system is designed for printing professionals who require high speed production of color and monochrome technical documents, business communications and display graphics. The system is a comprehensive solution for wide format color imaging; spanning the full spectrum of applications from architectural, engineering, and construction documents to posters, signs, and photo enlargements—with maximum quality and performance.











# TECHNICAL

## TECHNICAL DOCUMENTS

Manufacturers, industrial design firms, engineering contractors, builders, architects and government agencies all rely on technical drawings to successfully communicate business messages. Not simply limited to black and white lines on paper, these documents encompass the full spectrum of color 3D renderings, graphical inlays, exploded view schematics, technical diagrams, manufacturing plans, architectural renderings and geographical maps.

As traditional technical documents and creative applications converge, wide format document production requirements have become more diversified. Full-color, oversized renderings, sketches, photographs, and product designs are frequently used in combination with purely technical drawings. The KIP Color 80 enables business professionals to effectively convey ideas and information by leveraging visual appeal and technical accuracy.

## TECHNICAL DOCUMENT CREATION

- Architectural
- Engineering
- Construction
- Product Manufacturers
- Project & Facilities Management
- Aerospace & Technology
- Utilities & Telecommunications
- Federal & Local Government



## TECHNICAL DOCUMENT EXAMPLES



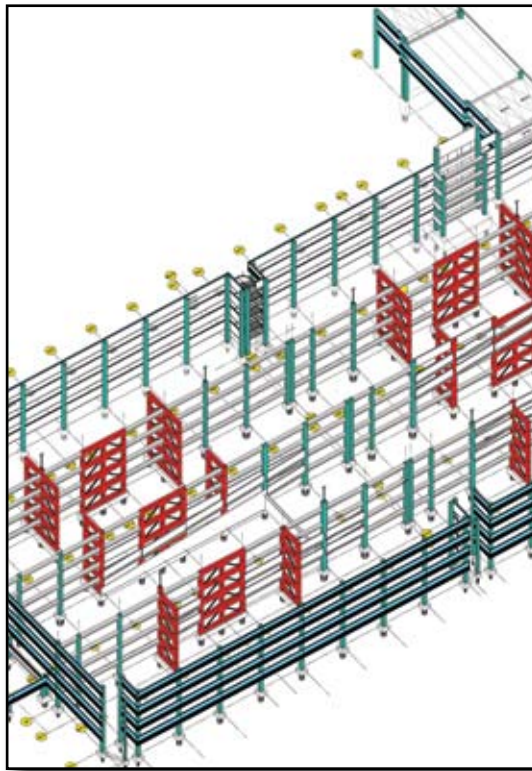
Monochrome CAD



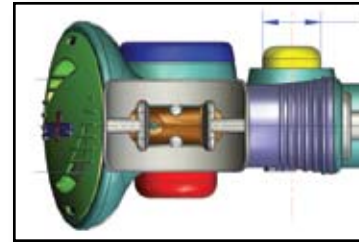
Color CAD



Color Renderings



Architectural Design



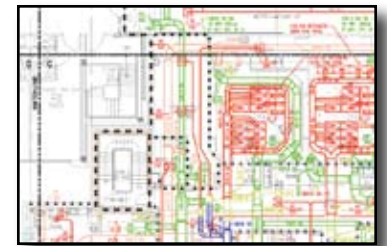
3D Designs



Mapping



Aerial Photos



Diagrams

## COLOR DYNAMICS

Technical documents are created utilizing a wide variety of specialty software applications designed to provide specific disciplines with the tools they need to complete important tasks.

Wide format prints use space and color elements to add clarity and meaning to the technical information contained in a drawing, map, rendering or diagram. The KIP Color 80 is capable of producing monochrome collated sets with interleaved color documents for maximum visual impact. In addition, color enables the presentation of 3D-data on two dimensional paper to highlight critical areas or to indicate changes.

The increasingly common practice of using color to accentuate key features includes:

- Color-Coding
- Mark-Ups
- Highlights
- Revision Notes
- Approval Stamps
- Photo Overlays





# BUSINESS & DISPLAY

## DISPLAY GRAPHICS & BUSINESS COMMUNICATIONS

Photos, posters, in-store displays, exhibit signage, and large graphics require high-quality prints, copies and scans for vibrant, expressive color visuals. Wide format color prints provide a powerful method of quality communication to keep clients informed of upcoming events, policies, announcements, project plans, or special offers.

The KIP Color 80 system produces lightfast, UV-proof prints which do not fade or exhibit color deterioration from exposure to light. Colorful banners, bulletins, and signs posted in hallways or placed in windows attract attention while large, full color business-style graphics deliver the right message at meetings, sales presentations, and legal briefs. KIP Color 80 prints are ideal for most applications because of their ability to deliver high resolution image quality at production print speeds with low operational costs.

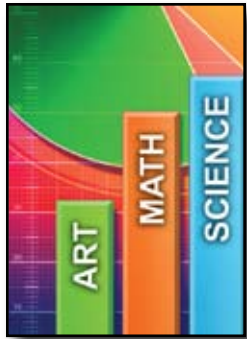
## DISPLAY GRAPHIC CREATION

- Commercial & Prepress Printing
- Digital Publishing
- Corporate Office
- Graphic Arts
- Point of Purchase
- Education
- Exhibition
- Litigation

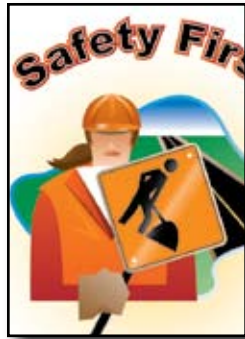




## DISPLAY GRAPHIC EXAMPLES



*Data Graphs*



*Public Announcements*



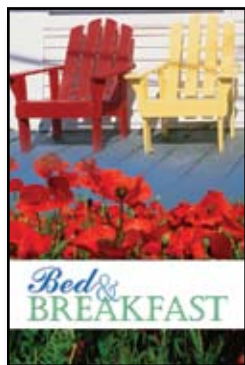
*Point-of-Purchase Displays*



*Training Graphics*



*Posters*



*Promotions/Ads*



*Business Charts*



*Special Events*

## MAXIMUM PRODUCTION

The KIP Color 80 is a high-performance solution for meeting the most demanding large format printing volumes from graphic design software. These diverse and powerful applications generate a variety of digital file formats which must be properly processed and printed on-demand.

Full color wide format documents from all levels of users frequently contain a mixture of bold colors and fine details, with the expectation of output on a broad range of media choices. A unique dry toner LED imaging process gives the KIP Color 80 the distinction of being able to produce vivid prints that do not fade regardless of the media used.

Wide format display graphics and business communications are produced at maximum production speed, independent of:

- Print Width
- Print Length
- Media Type
- Image Complexity
- File Format
- Color Density



# TECHNOLOGY

Wide format prints increasingly rely on color data to quickly convey important information. The KIP Color 80 addresses this need by efficiently producing wide format color documents at full speed, regardless of image complexity and with the quality advantages of true CMYK dry toner printing. This versatile system is designed to meet communication requirements by supporting a wide variety of media types and sizes to create exactly the desired result for any application.



## ACCELERATED PRODUCTION

KIP Color 80 excels in power, simplicity and quality for cost effective color print production. With an operational speed of 1,800 square feet per hour, it is the single most productive wide format LED color printer in the world. High demand printing with long unattended runs is made possible via four integrated media roll decks, a manual cut-sheet feeder and integrated finishing systems. The immediate benefits are increased capacity and operational efficiency.

## PROCESSING POWER

The KIP IPS (Image Processing System) features an incredibly powerful processing system that takes full advantage of multithread technology. It provides the strength to tackle even the most demanding print, copy & scan jobs, regardless of image complexity, with ease and finesse while maintaining constant production speed.

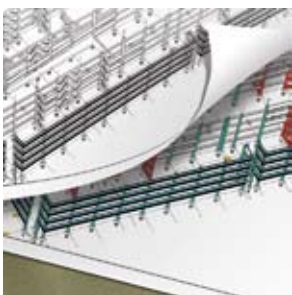
## DRY TONER PRINTING

**Lightfastness:** All prints and copies generated by the KIP Color 80 system are fully lightfast, meaning that they will not fade or exhibit color deterioration from exposure to light over extended periods.

**Waterproof:** The CMYK dry toner system employed by the KIP Color 80 produces 100% waterproof documents that are suitable for outdoor applications even in inclement weather.

## MEDIA

The KIP Color 80 supports a broad selection of media types for specific applications. Compatible media includes standard bond and photo gloss paper; technical and graphic vellums and films; billboard blue back and self-adhesive substrates. In addition, the KIP Color 80 system handles extended paper weights from 18 to 32lb. bond and 3 to 4mil film to further extend printing possibilities.



*Application Versatility*



*Powerful Processing*



*CMYK Dry Toner Printing*



*Variety of Media Types*





## COPYING AND SCANNING

The KIP Color 80 provides efficient, high speed hard-copy reproduction workflow. The system is ideal for the full range of monochrome technical documents as well as full color graphic renderings, maps and photos. Exceptional image quality is achieved through true 600 x 600 dpi optical resolution via an integrated KIP scanner with advanced camera based optics and delicate original transport mechanics for pixel-perfect images. The scanner dynamically adjusts exposure settings during the scan/copy process to reproduce wide format color documents at astonishing speed.

Professional grade color calibration creates a high performance solution for the most discerning color scanning & copying environments. Versatile scanning features swiftly interpret all types of paper originals to create a variety of file formats for Email, archive and printing purposes. To maximize copying efficiency, a single KIP scanner can be easily calibrated and connected to as many KIP Color 80 printers as required! In addition, a currently installed scanner can be utilized with the KIP Color 80 system to produce color copies and scans. The KIP Color 80 imaging system delivers the power to reproduce complex technical documents, graphics and photos as efficiently as simple line drawings.



# SOFTWARE

The KIP Color 80 system features a diversified software suite that forms the most open, integrated and powerful wide format color imaging system available. From web-based viewing and printing of documents in a wide range of formats, to PC color management and application drivers, KIP Color 80 software streamlines production print work, saves time and increases productivity.

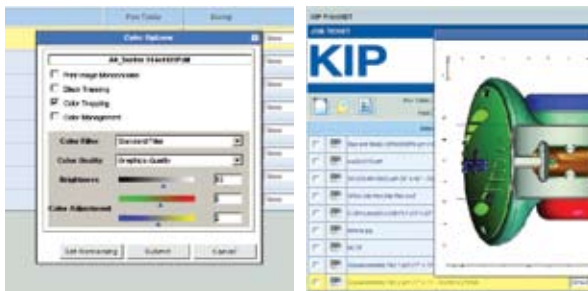
## PRODUCTION PRINTING SOFTWARE



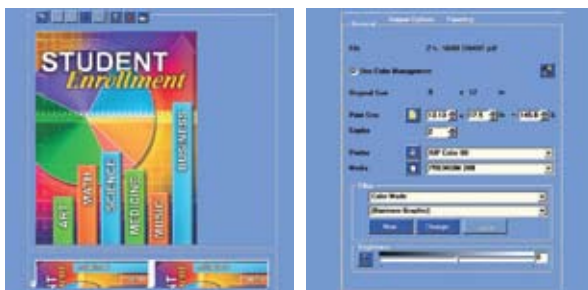
KIP PrintNET is a true web-based print production tool that delivers powerful color file viewing & printing, KIP Color 80 job queue management and administration features without the need to install any software applications on network computers. Users may select and send single or multiple files to KIP Color 80 systems, complete with image adjustments such as scaling, stamping and color management! In addition, KIP PrintNET generates customizable Email reports detailing all KIP Color 80 system usage on demand or at requested intervals. These reports contain data compatible with spreadsheet applications for easy customization and analysis..



KIP Request network printing software is an easy to use application designed to provide operators with a fast and accurate means of producing high quality print sets from all types of wide format digital files. Every aspect of KIP Request is centered on production workflow, providing complete command of a host of powerful printing and print management tools. Color and monochrome technical documents are efficiently selected for printing in collated sets with the ability to designate custom output preferences before print submission.



*KIP Color 80 Web-Based Color File Viewing & Printing*



*KIP Color 80 Print Management Tools*


**Pre-Production:** Integrated full color viewing accurately displays images ■ Operator authentication system for maximum security ■ Full range of available printing options with color management ■ Automatic file format detection

**Printing Power:** Fast processing for maximum productivity ■ Individual file rotation within a collated set ■ KIP PrintNET compatible with all standard Web Browser applications ■ Advanced document folding features

**Administrative Features:** Complete KIP Color 80 job queue management ■ Accurate and detailed job accounting information ■ KIP PrintNET is compatible with all standard operating systems ■ E-mail notification can be sent to users upon print job receipt



## PREMIUM COLOR PRINT MANAGEMENT SOFTWARE



The KIP Color RIP provides color imaging professionals with the necessary tools to maximize output and quality while limiting the time invested in producing prints with superb color accuracy. With a straight forward and concise layout, users are able to access all major features from a single screen. KIP Color RIP delivers advanced color management with integrated support for ICC profiles created for KIP Color 80 systems. KIP Color RIP software provides advanced color management features, image editing capabilities, paneling of images for outdoor graphics, nesting of images for optimum media usage and much more.

**Color Fidelity:** ■ Accurate color from closed-loop calibration with KIP scanners ■ Supports advanced calibration using spectrophotometer ■ Full support for ICC color profiles ■ Professional color management utilizing the L\*a\*b color space.

**Image Enhancement:** ■ Sharpens fuzzy images ■ Seamless scaling for enlargement and reduction ■ Rotate, mirror & panel images ■ Advanced HPGL file pen controls ■ Area of interest print selection

**Output Options:** ■ Unattended batch / overnight printing ■ Wide variety of compatible media types ■ Automatic image nesting for paper saving preview of print placement on the paper roll ■ Archive processed files for subsequent usage.

**Administrative Features:** ■ Flexible Client/Server architecture ■ Customizable hot folder printing support ■ Complete job accounting and data tracking ■ Apply header labels with printed document information

## POSTSCRIPT AND WINDOWS DRIVER



The KIP Color 80 Windows driver is Microsoft certified for 64 and 32 Bit Windows Vista, XP and Server 2003, meaning the KIP Windows driver meets explicit standards of reliability and quality.

The driver enables direct color printing from Windows based applications and supports advanced features including set collation, fast spooling for multiple copies or sets job accounting, media selection and ICC profile assignment. Postscript data from the KIP Color 80 Windows driver is quickly and effectively interpreted into accurate wide format color prints. In addition, PDF and DWF files with embedded fonts, formatting and graphics are easily viewed, navigated and printed exactly as intended.



*Open, Integrated And Powerful Wide Format Color Imaging Software*



# CONFIGURATIONS

The KIP Color 80 system may be configured in a range of workflow possibilities to suit any wide format document environment. Fully integrated finishing solutions are designed to deliver maximum document control with minimum effort. The wide range of versatile KIP Color 80 system configurations creates new possibilities for high demand print management.



## KIP COLOR 80 FOLDING & STACKING

The KIP Color 80 features seamlessly integrated finishing solutions to enable true, end-to-end productivity. Because every production environment is unique, a modular architecture enables scalability and system upgrades as they are needed.

**FOLDING AND STACKING OPTIONS:** ■ **KIP Color 80 Stacker:** This stacking system employs a driven roller system for accurate collection of up to 1000 prints up to 36" x 48" in size. Bi-directional printer communication maximizes system uptime. ■ **KIPFold 80:** The KIPFold 80 communicates with the KIP Color 80 system software applications and drivers to provide easy workflow integration. The KIPFold 80 provides the flexibility to fold copies and prints into all architectural, engineering and metric standard packet sizes.



*Print*



*Copy & Scan*



*Stack*



*Fold*





