

# Designing Aged Care Environments

FOR BETTER INFECTION CONTROL

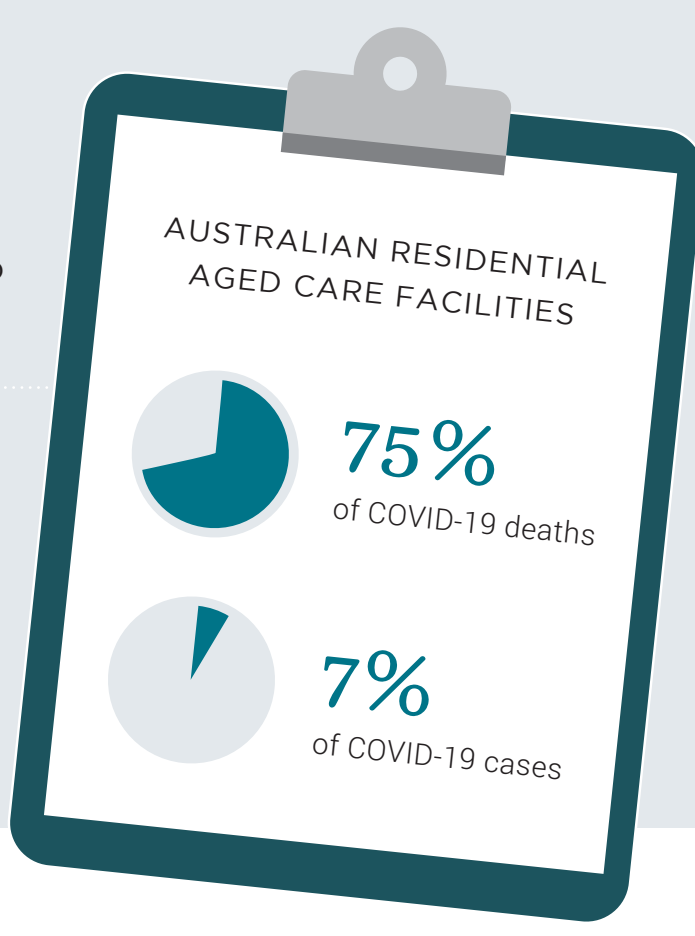


## Heightened infection risks in aged care

Between April 2020 and April 2021, people in residential aged care facilities made up 75% of COVID-19 deaths in Australia, despite making up only 7% of total cases.

### COVID-19 is not the only threat:

- Legionnaires' disease
- Staphylococcus aureus ("Staph")
- Escherichia coli ("E Coli")
- Common colds
- Influenza



## Challenges in aged care



**Immunocompromised.** Aged care residents are particularly vulnerable due to co-morbidities and advanced age.

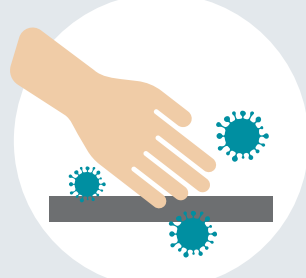
**Environmental design.** Aged care facilities are characterised by close living quarters, shared rooms and communal areas with soft furnishings that are difficult to keep clean.

**Physical distancing.** Residents are exposed to potential vectors of disease, including staff and visitors.

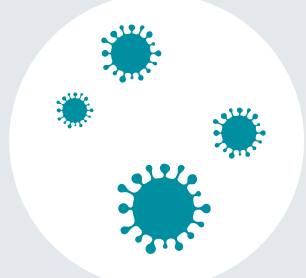
**Staff & Personal Protective Equipment (PPE).** The aged care sector faces issues with infection control training and shortages in PPE supplies.

*A key challenge is balancing the requirements of health and hygiene with residents' social and emotional needs such as space for interaction, visitor access and opportunities for activities outside the facility.*

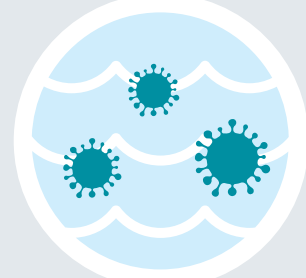
## Common Modes of Transmission



Hand and surface contact



Airborne



Waterborne

## Design opportunities in aged care



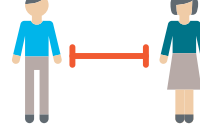
### New models of care.

Smaller autonomous residences with dedicated staff.



### Health staff spaces.

Provide changing and hygiene facilities to enable staff to effectively implement infection control protocols.



### Increased physical distancing.

Design comfortable private rooms with ensuite bathrooms, outdoor communal areas, and separate bathrooms for staff and visitors.



### Protecting water supplies.

Consider water disinfection solutions, high quality water systems and laminar flow aerators with anti-microbial properties.



### Increased ventilation.

Provide each resident's room and all major interior spaces with its own supply of ventilation.



### Smart technology.

Include sensor-operated technology for high-touch surfaces, and smart bathroom fixtures to track hygiene levels in realtime.



### Access and storage of PPE.

Provide adequate space to safely store and access PPE.



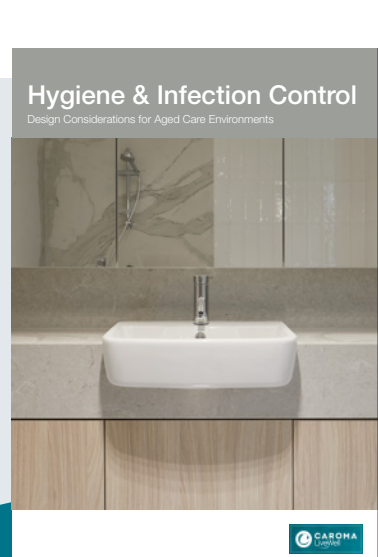
### Easy-to-clean surfaces.

Specify smooth, durable surfaces with minimal cracks, crevices and hard-to-reach areas that enable easy and effective cleaning.

## Caroma

Caroma LiveWell specialises in providing beautiful bathroom fixtures, which enhance the wellbeing of all Australians. Working closely with health and aged care specialists, Caroma delivers innovative solutions that surpass current industry standards, with features that can help control the spread of infection, including:

- The latest in antimicrobial defense technology, **Caroma GermGard®**.
- The **Caroma Opal Collection** of bathroom solutions designed to reduce challenges for the elderly, while ensuring easy cleaning.
- **Caroma Cleanflush® Toilets**, a hygienic rimless bowl design combined with innovative flush and flow technology.
- The **Caroma Care Basin**, ideal for staff handwashing stations with advanced hygienic design.
- The **Caroma G Series** of electronic tapware and soap dispensers with innovative hands-free operation.
- **Caroma Smart Command®**, an ecosystem of intelligent products that enable building managers to monitor water use and hygiene levels in realtime.



Download the Whitepaper here