

Blacktown Hospital Mental Health Unit (NSW)

Water Solutions for a Healthier Environment



Cutting-edge mental health unit debuts at Blacktown Hospital

Bronnie Taylor, Minister for Mental Health, has inaugurated the Acute Adult Mental Health Inpatient Service at Blacktown Hospital, unveiling a contemporary therapeutic environment aimed at fostering calm and healing during recovery.

According to Mrs. Taylor, the newly established 30-bed unit adopts progressive models of care, emphasising recovery, with input from local residents and the broader community shaping its conception and execution.

Transitioning seamlessly from Bungarabee House at Blacktown Hospital, consumers and staff moved into the upgraded unit on Tuesday, February 22, preceded by a smoking ceremony on Monday, February 21.

Highlights of the new facility include:

- 30 single-bed rooms adorned with individual artwork
- Two expansive dining and recreation spaces, flooded with natural light
- A dedicated area for art therapy and other therapeutic endeavors
- Sensory modulation rooms, featuring cozy seating, entertainment provisions, and a skyview ceiling panel
- Indoor and outdoor exercise facilities, alongside landscaped gardens

Graeme Loy, Chief Executive of Western Sydney Local Health District (WSLHD), lauded the overwhelmingly positive feedback on the facility, acknowledging the invaluable contributions of staff, consumers, and community members in shaping its design.

The purpose-built unit forms part of the state's \$700 million Mental Health Infrastructure Program, a monumental investment aimed at catalysing mental healthcare reform across NSW.

"This space prioritises comfort for those seeking mental health support," Mrs. Taylor emphasized, underscoring the abundance of natural light, thoughtfully designed outdoor spaces, and captivating artwork throughout.

Crucially, involvement of individuals with lived experiences ensured a consumer-centric approach at every stage, fostering an environment conducive to cultural, emotional, psychological, and physical well-being.

The relocation aligns with the ongoing Blacktown and Mount Druitt Hospitals Expansion Project, setting the stage for the demolition of Bungarabee House and the subsequent construction of an additional purpose-built mental health facility at Blacktown Hospital.

Key Data

Location: Marcel Crescent, BLACKTOWN NSW 2148

Project start: Jan 2020

Project completion: Mar 2022

Plumbing contractor: Stockman Plumbing

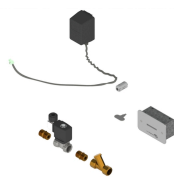
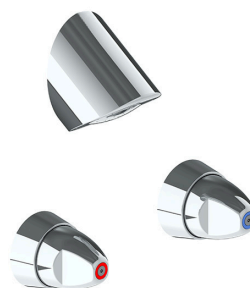
Builder: Donelly Constructions

Architect: Jacobs Sydney

Hydraulic consultant: Warren Smith & Partners

Value of overall project: \$8.25 million

Products Installed





Within Australia: **1300 514 074**
Outside Australia: P: +61 (0)8 9338 2344
sales@galvinengineering.com.au
www.galvinengineering.com.au



**A family
owned
Australian
business**

