

SIKA AT WORK

KINGS SQUARE BASEMENT

Product: Sikaproof A

BUILDING TRUST



PROJECT OVERVIEW & REQUIREMENTS

PROJECT DESCRIPTION

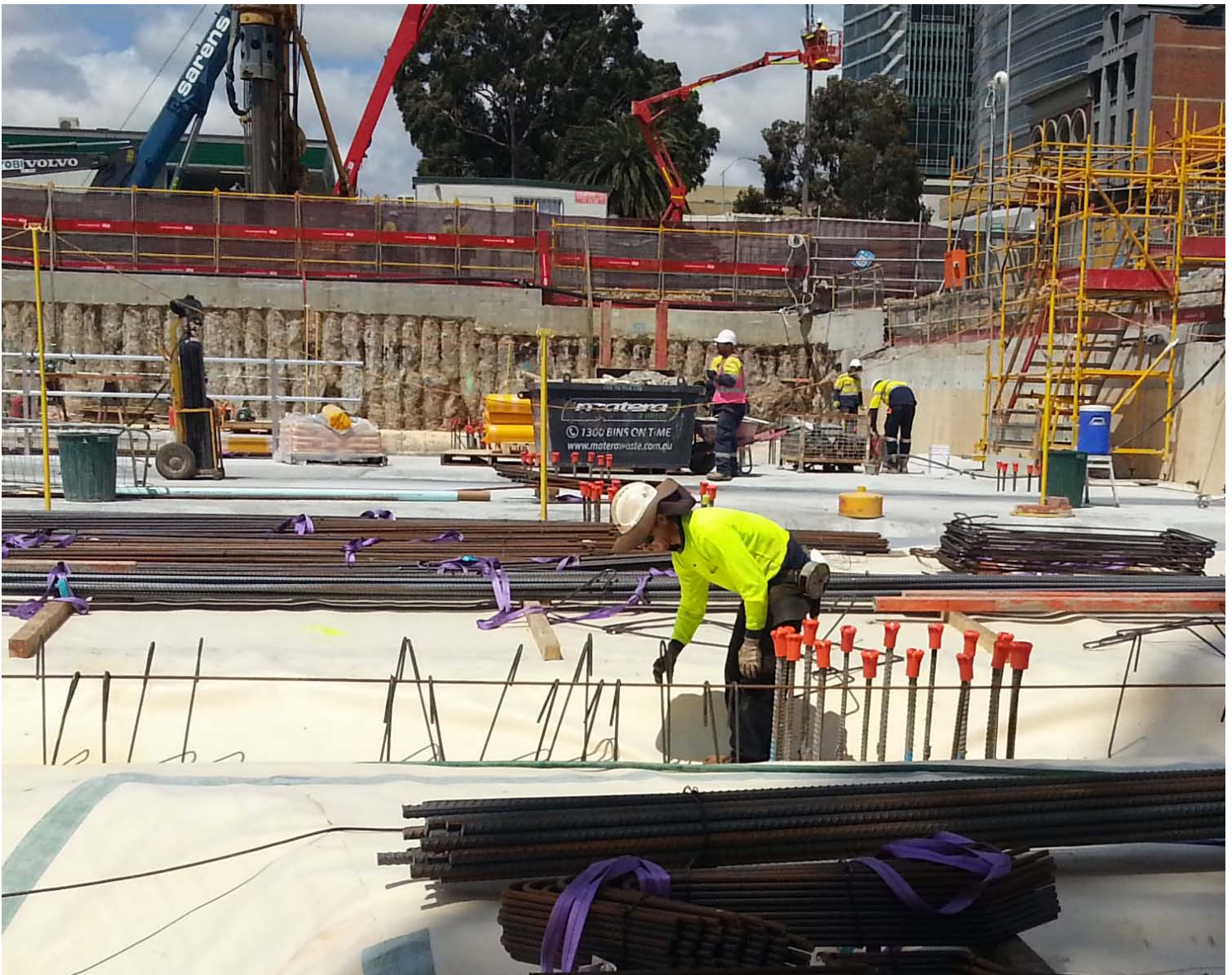
Situated in the middle of Perth City Link, on the former Perth Wetlands, the Kings Square development will meld the atmospheres of Lake and King Streets together to create the cosmopolitan heart of the city.

The new two-way street connection will emphasise the pedestrian-friendly character of the area. East-west lanes and arcades will link to other key destinations. Bars, restaurants and late-closing shops will be scattered throughout, with offices located on the floors above.

PROJECT REQUIREMENTS

Sika were asked to provide waterproofing and protection solutions for the concrete foundations of this new development, which is the first of a 4 buildings project.

Given the buildings location, a former lake and surrounding wetlands, and the water table being only 1 to 1.5 metres below the surface, a high quality and proven waterproofing solution for the basement and inclusive foundations was required.



SIKA'S WATERPROOFING SOLUTION

SIKA SOLUTION

Sika Proof A was presented to the design team of the project, being selected as the most suitable product in the market for this application.

PRODUCTS USED

SikaProof A (4,500 m² approx)
Sika Sarnafil (250 m² approx)
Sika Swell S-2
Sika Swell A2010M
Sika WT 100 AU
SikaGrout 212 HP
Sikadur 42





PROJECT DETAILS

Date: October-November 2013

Location: Perth CBD, Western Australia

Contractor: Citi Commercial Maintenance

Sika Representative: Cristian Oyarzun

Our most current General Sales Conditions shall apply.
Please consult the Data Sheet prior to any use and processing.



SIKA AUSTRALIA

55 Elizabeth Street
Wetherill Park, NSW, 2164
Australia

Contact

Phone +61 2 9725 1145
Fax +61 2 9725 2605
aus.sika.com

BUILDING TRUST

